

ILLUSTRATION

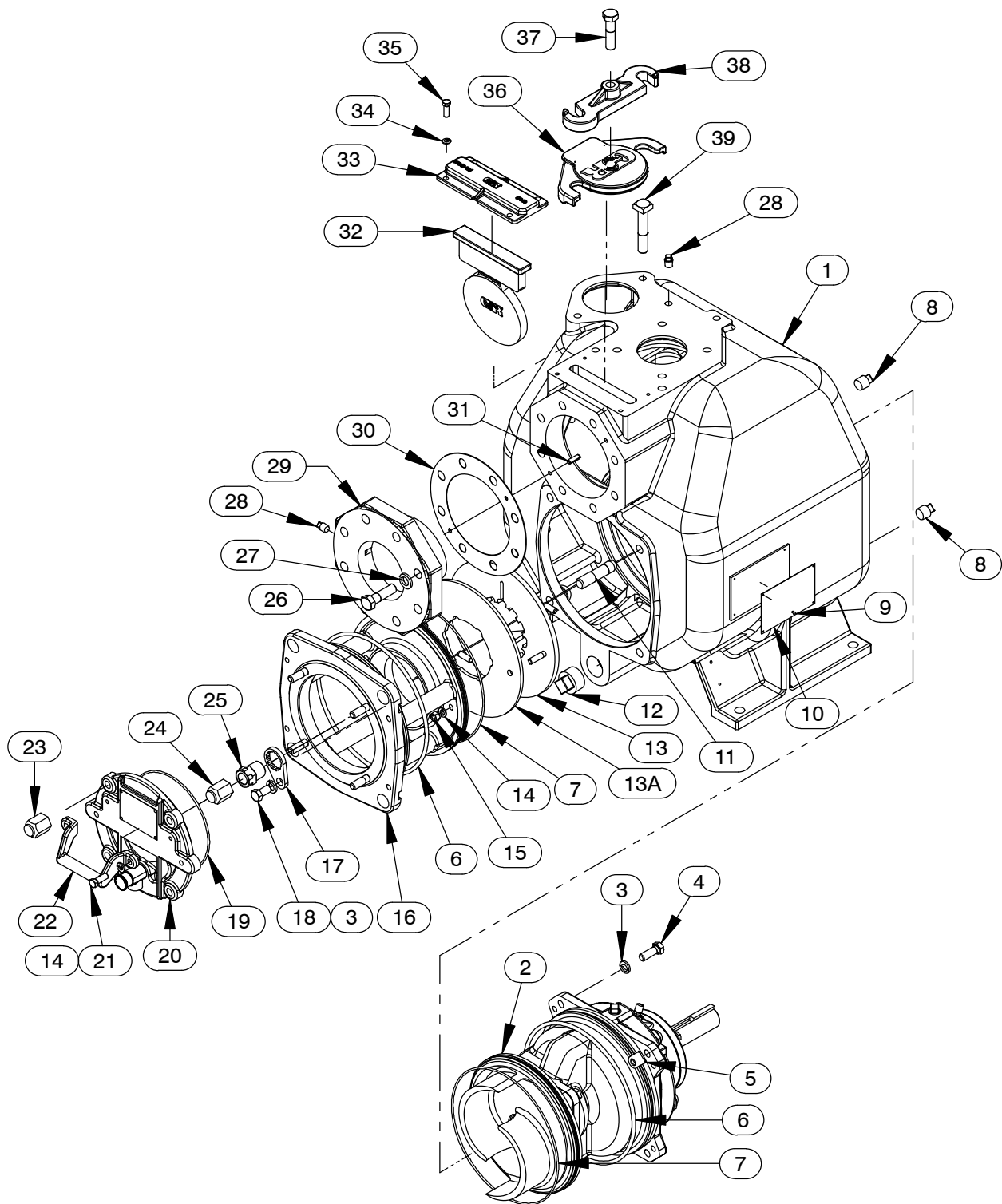


Figure 1. Pump Model V3C60SC-B

**PARTS LIST**  
**Pump Model V3C60SC-B**  
 (From S/N 1720852 Up)

If your pump serial number is followed by an "N", your pump is **NOT** a standard production model. Contact the Gorman-Rupp Company to verify part numbers.

| ITEM NO. | PART NAME             | PART NUMBER     | QTY | ITEM NO.                 | PART NAME                        | PART NUMBER     | QTY |
|----------|-----------------------|-----------------|-----|--------------------------|----------------------------------|-----------------|-----|
| 1        | PUMP CASING           | SEE NOTE BELOW  | 1   | 37                       | HEX HEAD CAP SCREW               | B1010S 15991    | 1   |
| 2        | REPAIR ROTATING ASSY: |                 |     | 38                       | CLAMP BAR                        | 38111-004 11010 | 1   |
|          | -V3C60SC-B            | 44163-463       | 1   | 39                       | MACHINE BOLT                     | A1014 15991     | 2   |
|          | -V3C60SC-B /WW        | 44163-464       | 1   | V3C60SC-B /WW NOT SHOWN: |                                  |                 |     |
| 3        | LOCK WASHER           | J08 15991       | 8   |                          | HEX NUT                          | D10 15991       | 8   |
| 4        | HEX HEAD CAP SCREW    | B0806 15991     | 4   |                          | SPOOL FLANGE                     | 12066A 10010    | 1   |
| 5        | SPACER                | 33221-022 17040 | 4   | *                        | GASKET                           | 25113-034       | 1   |
| 6 *      | O-RING                | S1674           | 2   |                          | STUD                             | C1015 15991     | 8   |
| 7 *      | O-RING                | 25152-273       | 2   | NOT SHOWN:               |                                  |                 |     |
| 8        | PIPE PLUG             | P08 15079       | 2   |                          | G-R DECAL                        | GR-03           | 1   |
| 9        | DRIVE SCREW           | BM#04-03 17000  | 4   |                          | LUBRICATION DECAL                | 38817-084       | 1   |
| 10       | NAMEPLATE BLANK       | 38819-002 13000 | 1   |                          | ULTRA V DECAL                    | 38816-342       | 1   |
| 11       | STUD                  | C1213 15991     | 4   |                          | SUCTION STICKER                  | 6588AG          | 1   |
| 12       | PIPE PLUG             | P20 10009       | 1   |                          | DISCHARGE STICKER                | 6588BJ          | 1   |
| 13       | WEAR PLATE ASSY       | 46451-378 24150 | 1   |                          | FILL TO PRIME STICKER            | 6588AH          | 1   |
| 13A      | SPACER PLATE          | 38691-891 15080 | 1   |                          | WARNING DECAL                    | 2613FE          | 1   |
| 14       | LOCK WASHER           | J06 15991       | 4   |                          | ROTATION DECAL                   | 2613M           | 1   |
| 15       | HEX NUT               | D06 15991       | 2   |                          | INSTRUCTION TAG                  | 38817-023       | 1   |
| 16       | BACK COVER ASSY       | 42111-461       | 1   |                          | INSTRUCTION TAG                  | 38817-011       | 1   |
| 17       | LOCK COLLAR           | 38115-551 15001 | 4   |                          | ERADICATOR DECAL                 | 38812-111       | 1   |
| 18       | HEX HEAD CAP SCREW    | B0804 15991     | 4   | OPTIONAL:                |                                  |                 |     |
| 19 *     | O-RING                | S1472           | 1   |                          | DISASSEMBLY TOOL                 | 48711-020       | 1   |
| 20       | INSPECT COVER ASSY    | 42111-456       | 1   |                          | FLAP VALVES:                     |                 |     |
|          | * -PRESS RELIEF VALVE | 26662-005       | 1   |                          | -FLUOROCARBON                    | 46411-155 24010 | 1   |
|          | -WARNING PLATE        | 2613EV 13990    | 1   |                          | -BUNA-N                          | 46411-156 24010 | 1   |
|          | -DRIVE SCREW          | BM#04-03 17000  | 1   |                          | -EPDM                            | 46411-157 24010 | 1   |
| 21       | HEX HEAD CAP SCREW    | B0604-1/2 15991 | 2   |                          | FLANGE KITS:                     |                 |     |
| 22       | HANDLE                | 12354 13010     | 1   |                          | 3" NPT FLANGE KIT                | 48213-119       | 1   |
| 23       | BACK COVER NUT        | 31871-075 15000 | 4   |                          | 4" X 3" SUCTION/DISCHARGE        |                 |     |
| 24       | BACK COVER NUT        | 31871-073 15000 | 4   |                          | SPOOL KIT                        | 48213-143       | 1   |
| 25       | ADJUSTING SCREW       | 31871-070 1500G | 4   |                          | 4" X 3" METRIC SUCTION/DISCHARGE |                 |     |
| 26       | HEX HEAD CAP SCREW    | B1009 15991     | 8   |                          | SPOOL KIT                        | 48213-121       | 1   |
| 27       | LOCK WASHER           | J10 15991       | 8   |                          | CASING HEATERS:                  |                 |     |
| 28       | PIPE PLUG             | P04 15079       | 2   |                          | -120V                            | 47811-103       | 1   |
| 29       | SUCTION FLANGE        | 38641-534 10000 | 1   |                          | -240V                            | 47811-104       | 1   |
| 30 *     | GASKET                | 38683-502 19370 | 1   |                          | HI TEMP SHUT-DOWN KITS:          |                 |     |
| 31       | ROLL PIN              | 21154-229       | 2   |                          | -145°F                           | 48313-186       | 1   |
| 32 *     | FLAP VALVE ASSEMBLY   | 46411-147 24010 | 1   |                          | -130°F                           | 48313-256       | 1   |
| 33       | FLAP VALVE COVER      | 38346-621 17040 | 1   |                          | -120°F                           | 48313-257       | 1   |
| 34       | LOCK WASHER           | J05 15991       | 4   |                          | HIGH TEMP SHUT-DOWN              |                 |     |
| 35       | HEX HEAD CAP SCREW    | B0504 15991     | 4   |                          | THERMOSTAT KIT 145°F             | 48313-172       | 1   |
| 36       | FILL PORT COVER ASSY  | 42111-437       | 1   |                          | AIR RELEASE VALVES:              |                 |     |
|          | -WARNING PLATE        | 38816-097 13990 | 1   |                          | -10# COMP SPRING                 | GRP33-07A       | 1   |
|          | -DRIVE SCREW          | BM#04-03 17000  | 2   |                          | -25# COMP SPRING                 | GRP33-07        | 1   |
|          | * -GASKET             | 50G 19210       | 1   |                          | -80# COMP SPRING                 | GRP33-07B       | 1   |

\* INDICATES PARTS RECOMMENDED FOR STOCK

|                      |           |   |
|----------------------|-----------|---|
| INCLUDED WITH REPAIR | 46472-733 | 1 |
| PUMP CASING ASSY     |           |   |

ILLUSTRATION

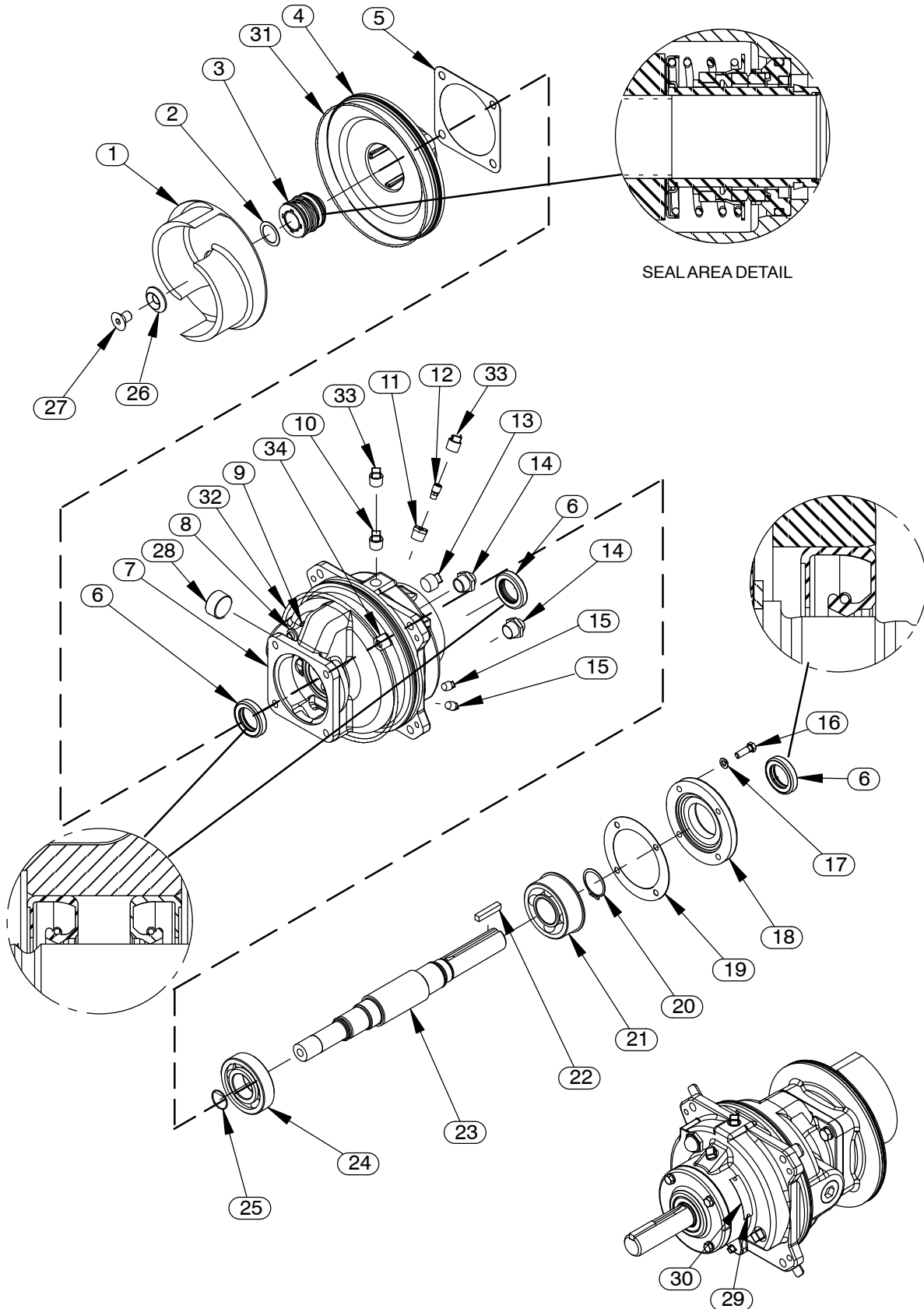


Figure 2. Repair Rotating Assemblies

## PARTS LIST

### Repair Rotating Assemblies

**Note:** Order the complete Repair Rotating Assembly from the Pump Model Assembly Parts List on page E-3. Rotating Assemblies for /WW models also include all standard parts listed below.

| ITEM<br>NO. | PART NAME              | PART<br>NUMBER  | QTY |
|-------------|------------------------|-----------------|-----|
| 1           | * IMPELLER             | 38615-103 11010 | 1   |
| 2           | * ADJ. SHIM SET        | 37J 17090       | 1   |
| 3           | * SEAL ASSY            | 46513-151       | 1   |
| 4           | SEAL PLATE             | 38272-267 10000 | 1   |
| 5           | * GASKET               | 10959G 20000    | 1   |
| 6           | * OIL SEAL             | S1352           | 3   |
| 7           | BEARING HOUSING        | 38251-411 10000 | 1   |
| 8           | LOCK WASHER            | J08 15991       | 4   |
| 9           | HEX HEAD CAP SCREW     | B0805-1/2 15991 | 4   |
| 10          | VENTED PIPE PLUG       | 4823A 15079     | 1   |
| 11          | REDUCER PIPE BUSHING   | AP0802 15079    | 1   |
| 12          | AIR VENT               | S1530           | 1   |
| 13          | PIPE PLUG              | P12 15079       | 1   |
| 14          | SIGHT GAUGE            | S1471           | 2   |
| 15          | PIPE PLUG              | P04 15079       | 2   |
| 16          | HEX HEAD CAP SCREW     | B0605 15991     | 4   |
| 17          | LOCK WASHER            | J06 15991       | 4   |
| 18          | BEARING CAP            | 38322-220 10000 | 1   |
| 19          | * GASKET               | 38683-271 18000 | 1   |
| 20          | RETAINING RING         | S442            | 1   |
| 21          | * BALL BEARING         | S375            | 1   |
| 22          | * KEY                  | N0608 15990     | 1   |
| 23          | * IMPELLER SHAFT       | 38514-827 1706H | 1   |
| 24          | * BALL BEARING         | S1088           | 1   |
| 25          | * O-RING               | 25154-022       | REF |
| 26          | IMPELLER WASHER        | 31167-029 16000 | 1   |
| 27          | FLAT HEAD SOCKET SCREW | F1004S 1500G    | 1   |
| 28          | PIPE PLUG              | PC20 10009      | 1   |
| 29          | DRIVE SCREW            | BM#04-03 17000  | 2   |
| 30          | ASSEMBLY PLATE         | 2613GG 13990    | 1   |
| 31          | * O-RING               | 25152-273       | 1   |
| 32          | * O-RING               | S1674           | 1   |
| 33          | SHIPPING PLUG          | 11495B 15079    | 2   |
| 34          | SPACER                 | 33221-022 17040 | 4   |
| NOT SHOWN:  |                        |                 |     |
|             | ROTATION DECAL         | 2613M           | 1   |
|             | INSTRUCTION TAG        | 6588U           | 1   |

\* INDICATES PARTS RECOMMENDED FOR STOCK