

ILLUSTRATION

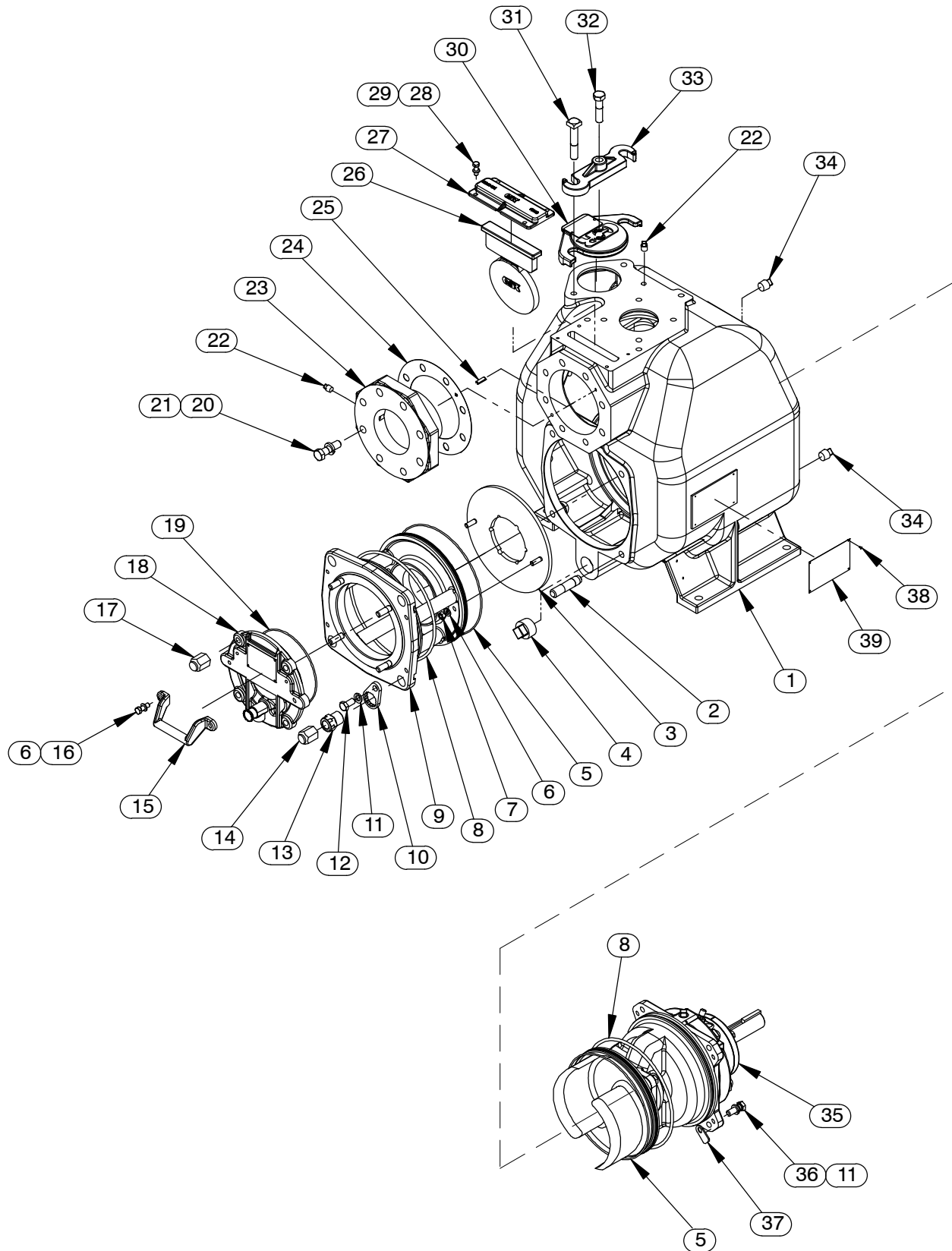


Figure 1. Pump Model V3B60-B (Including /WW)

**PARTS LIST**  
**Pump Model V3B60-B (Including /WW)**  
 (From S/N 1728153 Up)

If your pump serial number is followed by an "N", your pump is **NOT** a standard production model. Contact the Gorman-Rupp Company to verify part numbers.

ITEM NO.	PART NAME	PART NUMBER	QTY	ITEM NO.	PART NAME	PART NUMBER	QTY
1	PUMP CASING	SEE NOTE BELOW	1	NOT SHOWN:			
2	STUD	C1213 15991	4	SUCTION SPOOL PARTS (/WW MODEL ONLY)			
3	WEAR PLATE ASSY	46451-760 24150	1	-SPOOL FLANGE	12066A 10010	1	
4	PIPE PLUG	P20 10009	1	-FLANGE GASKET	25113-034	1	
5 *	O-RING	25152-273	2	-FLANGE PIPE PLUG	P20 10009	1	
6	LOCK WASHER	J06 15991	4	WARNING DECAL	2613FE	1	
7	HEX NUT	D06 15991	2	ROTATION DECAL	2613M	1	
8 *	O-RING	S1674	2	LUBRICATION DECAL	38817-084	1	
9	BACK COVER ASSY	42111-461	1	G-R DECAL	GR-03	1	
10	LOCK COLLAR	38115-551 15001	4	INSTRUCTION TAG	38817-023	1	
11	LOCK WASHER	J08 15991	8	ULTRA V DECAL	38816-342	1	
12	HEX HEAD CAP SCREW	B0804 15991	4	INSTRUCTION TAG	38817-011	1	
13	ADJUSTING SCREW	31871-070 1500G	4	FILL TO PRIME STICKER	6588AH	1	
14	BACK COVER NUT	31871-073 15000	4	DISCHARGE STICKER	6588BJ	1	
15	HANDLE	12354 13010	1	SUCTION STICKER	6588AG	1	
16	HEX HEAD CAP SCREW	B0604-1/2 15991	2	OPTIONAL:			
17	BACK COVER NUT	31871-075 15000	4	DISASSEMBLY TOOL	48711-020	1	
18	INSPECT COVER ASSY	42111-456	1	FLAP VALVES:			
	-WARNING PLATE	2613EV 13990	1	† -FLUOROCARBON	46411-148 24010	1	
	-DRIVE SCREW	BM#04-03 17000	4	-BUNA-N	46411-149 24010	1	
	* PRESS RELIEF VLV	26662-005	1	-EPDM	46411-150 24010	1	
19 *	O-RING	S1472	1	FLANGE KITS:			
20	HEX HEAD CAP SCREW	B1009 15991	8	3" NPT DISCH KIT	48213-119	1	
21	LOCK WASHER	J10 15991	8	4" X 3" ASA SUCTION/DISCHARGE			
22	PIPE PLUG	P04 15079	2	SPOOL KIT	48213-143	1	
23	SUCTION FLANGE	38641-534 10000	1	-4" ASA SUCTION			
24 *	GASKET	38683-502 19370	1	SPOOL KIT	48213-142	1	
25	ROLL PIN	21154-229	2	-3" ASA DISCHARGE			
26 *	FLAP VALVE ASSY	46411-147 24010	1	SPOOL KIT	48213-120	1	
27	FLAP VALVE COVER	38346-621 17040	1	4" X 3" METRIC SUCTION/DISCHARGE			
28	HEX HEAD CAP SCREW	B0504 15991	4	SPOOL KIT	48213-121	1	
29	LOCK WASHER	J05 15991	4	-4" METRIC SUCTION			
30	FILL PORT COVER ASSY	42111-437	1	SPOOL KIT	48213-144	1	
	* -FILL PORT GASKET	50G 19210	1	-3" METRIC DISCHARGE			
	-WARNING PLATE	38816-097 13990	1	SPOOL KIT	48213-145	1	
	-DRIVE SCREW	BM#04-03 17000	2	G-R HARD IRON PARTS:			
31	MACHINE BOLT	A1014 15991	2	WEAR PLATE ASSY	46451-760 24160	1	
32	HEX HEAD CAP SCREW	B1010S 15991	1	SST PARTS:			
33	CLAMP BAR	38111-004 11010	1	WEAR PLATE ASSY	46451-760 24170	1	
34	PIPE PLUG	P08 15079	2	HI TEMP SHUT-DOWN KITS:			
35	REPAIR ROTATING ASSY:			-145°F	48313-186	1	
	-V3B60-B	44163-472	1	-130°F	48313-256	1	
	-V3B60-B /WW	44163-473	1	-120°F	48313-257	1	
36	HEX HEAD CAP SCREW	B0806 15991	4	HIGH TEMP SHUT-DOWN			
37	SPACER	33221-022 17040	4	THERMOSTAT KIT 145°F	48313-172	1	
38	DRIVE SCREW	BM#04-03 17000	4	AIR RELEASE VALVES:			
39	NAMEPLATE BLANK	38819-002 13000	1	-10# COMP SPRING	GRP33-07A	1	
				-25# COMP SPRING	GRP33-07	1	
				-80# COMP SPRING	GRP33-07B	1	

\* INDICATES PARTS RECOMMENDED FOR STOCK

☞ INCLUDED WITH REPAIR 46472-733 1  
 PUMP CASING ASSY

† DUPONT VITON® OR EQUIVALENT

ILLUSTRATION

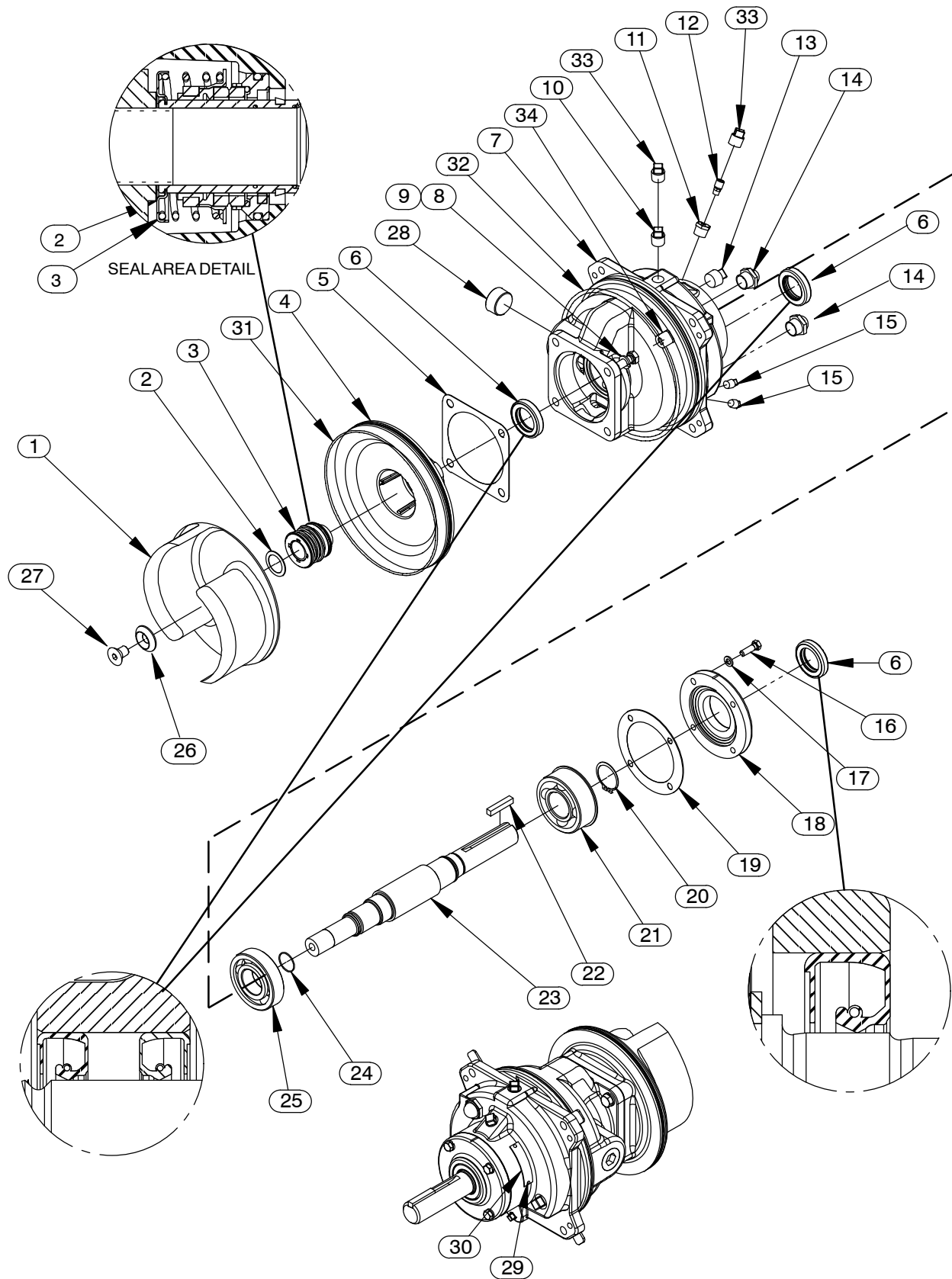


Figure 2. Repair Rotating Assemblies

## PARTS LIST

### Repair Rotating Assemblies

**Note:** Order the complete Repair Rotating Assembly from the Pump Model Assembly Parts List on page E-3. Rotating Assemblies for /WW models also include all standard parts listed below.

ITEM NO.	PART NAME	PART NUMBER	QTY
1	* IMPELLER	38615-107 11010	1
2	* ADJ SHIM SET	37J 17090	REF
3	* SEAL ASSY	46513-151	1
4	SEAL PLATE	38272-234 10010	1
5	* GASKET	10959G 20000	1
6	* OIL SEAL	S1352	3
7	BEARING HOUSING	38251-411 10000	1
8	LOCK WASHER	J08 15991	4
9	HEX HEAD CAP SCREW	B0805-1/2 15991	4
10	VENTED PIPE PLUG	4823A 15079	1
11	REDUCER PIPE BUSHING	AP0802 15079	1
12	AIR VENT	S1530	1
13	PIPE PLUG	P12 15079	1
14	SIGHT GAUGE	S1471	2
15	PIPE PLUG	P04 15079	2
16	PIPE PLUG	B0605 15991	4
17	LOCK WASHER	J06 15991	4
18	BEARING CAP	38322-220 10000	1
19	* GASKET	38683-271 18000	1
20	RETAINING RING	S442	1
21	* BALL BEARING	S375	1
22	* KEY	N0608 15990	1
23	* IMPELLER SHAFT	38514-817 1706H	1
24	* O-RING	25154-022	REF
25	* BALL BEARING	S1088	1
26	* IMPELLER WASHER	31167-029 16000	1
27	* FLAT HEAD SOCKET SCREW	F1004S 1500G	1
28	PIPE PLUG	PC20 10009	1
29	DRIVE SCREW	BM#04-03 17000	2
30	ASSEMBLY PLATE	2613GG 13990	1
31	* O-RING	25152-273	1
32	* O-RING	S1674	1
33	SHIPPING PLUG	11495B 15079	2
34	SPACER	33221-022 17040	4
NOT SHOWN:			
	INSTRUCTION TAG	6588U	1
	ROTATION DECAL	2613M	1
OPTIONAL:			
	TC CART SEAL ASSY	46513-150	1
G-R HARD IRON PARTS:			
	-IMPELLER	38615-107	1
	-SEAL PLATE	38272-234	1
SST PARTS:			
	-IMPELLER	38615-107 17070	1
	-SEAL PLATE	38272-234 17070	1
	-IMPELLER SHAFT	38514-817	1
	-CART SEAL ASSY	46513-156	1

\* INDICATES PARTS RECOMMENDED FOR STOCK