

ILLUSTRATION

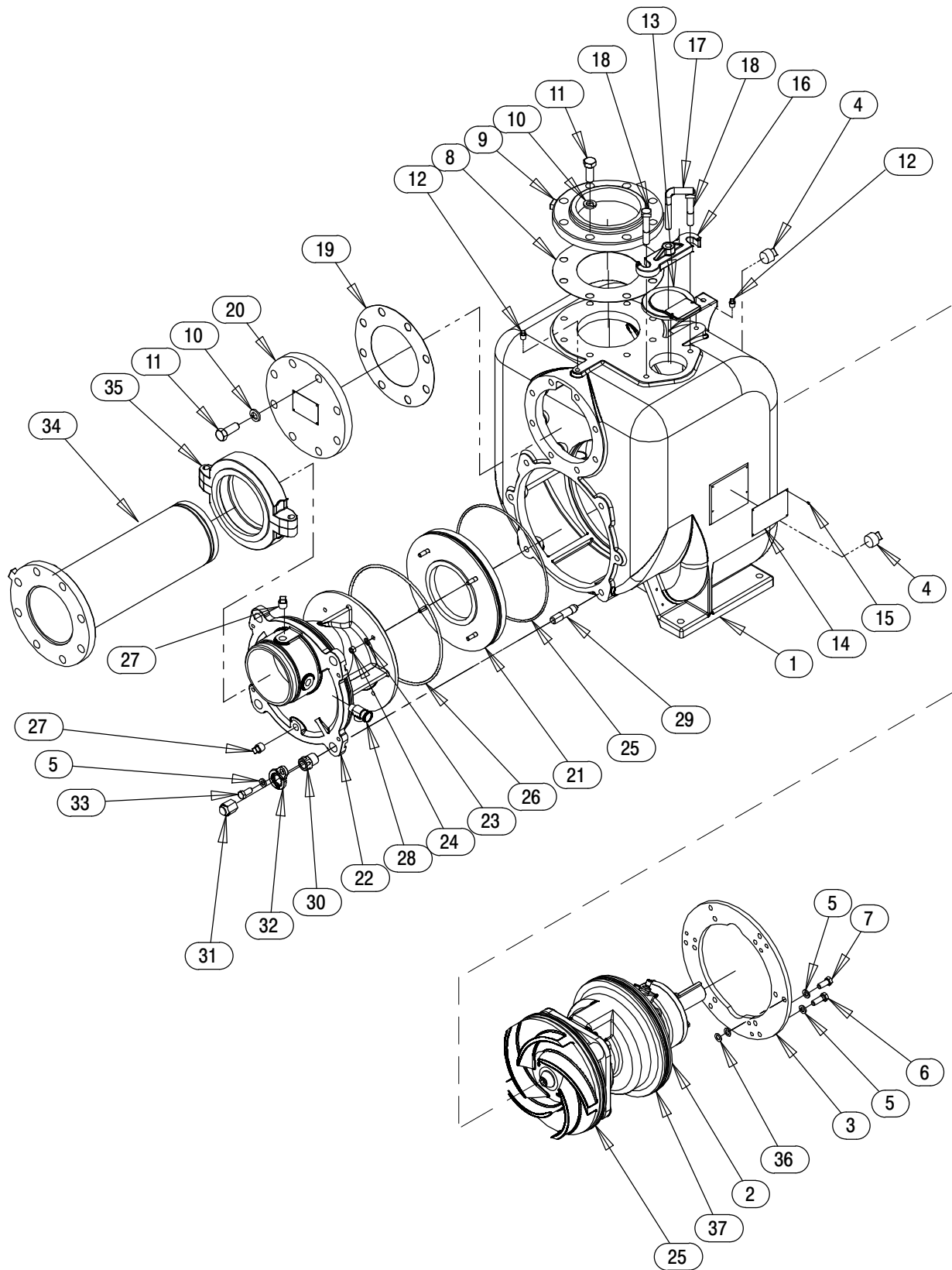


Figure 1. Pump Model U6A60S-B, Including /F, /FM

PARTS LIST
Pump Model U6A60S-B Including, /F, /FM
 (From S/N 1289665 Up)

If your pump serial number is followed by an "N", your pump is **NOT** a standard production model. Contact the Gorman-Rupp Company to verify part numbers.

ITEM NO.	PART NAME	PART NUMBER	QTY	ITEM NO.	PART NAME	PART NUMBER	QTY
☞ 1	PUMP CASING	SEE NOTE BELOW	1	33	HEX HEAD CAP SCREW	B0804-1/2 15991	4
2 *	REPAIR ROTATING ASSY	44163-413	1	34	EXTENSION PIPE ASSY	46351-021	1
3	PUMP RING	31281-047 15020	1		-6" NPT FLANGE	1758 10010	1
☞ 4	PIPE PLUG	P16 10009	2		-6" EXTENSION PIPE	31673-011 15070	1
5	LOCK WASHER	J08 15991	16	35 >	VICTAULIC COUPLING 6"	S1562	1
6	HEX HEAD CAP SCREW	B0806 15991	6	36 *	ADJ SHIM	13130-3 17040	12
7	HEX HEAD CAP SCREW	B0805 15991	6	37 *	O-RING	25152-453	1
8 *	GASKET	1679G 19370	1	NOT SHOWN:			
9	6" NPT FLANGE	1758 10010	1		LUBE DECAL	38817-084	1
10	LOCK WASHER	J12 15991	16		WARNING DECAL	2613FE	1
11	HEX HEAD CAP SCREW	B1208 15991	16		FILL TO PRIME STICKER	6588AH	1
☞ 12	PIPE PLUG	P04 15079	2		SUCTION STICKER	6588AG	1
13	COVER PLATE ASSY	42111-344	1		DISCHARGE STICKER	6588BJ	1
	* -GASKET	50G 19210	1		G-R DECAL, 6 IN	GR-06	1
	-WARNING PLATE	38816-097 13990	1		INSTRUCTION TAG	38817-023	1
	-DRIVE SCREW	BM#04-03 17000	2		SUPER "U" DECAL	38812-094	1
14	NAMEPLATE BLANK	38819-002 13000	1		WARNING DECAL	38816-302	1
15	DRIVE SCREW	BM#04-03 17000	4		ROTATION DECAL	2613M	1
16	CLAMP BAR	38111-004 11010	1		INSTRUCTION TAG	38817-011	1
17	SCREW-CLAMP BAR	31912-009 15000	1	OPTIONAL:			
☞ 18	MACHINE BOLT	A1014 15991	2		DISASSEMBLY TOOL	48711-020	1
19 *	GASKET	25113-036	1		/F DISCHARGE FLANGE	11402B 10010	1
20	BLIND FLANGE ASSY	42111-349	1		/FM METRIC FLANGES:		
	-WARNING PLATE	2613EV 13990	1		SUCTION/DISCHARGE	38642-503 10000	2
	-DRIVE SCREW	BM#04-03 17000	4		ADI WEAR PLATE	46451-740	1
21 *	WEAR PLATE ASSY	46451-737	1		316 SST OPTIONS:		
22	SUCTION BACK COVER	38243-479 10000	1		WEAR PLATE	46451-741	1
23	LOCK WASHER	J06 15991	4		PRESS RELIEF VALVE	46431-803	1
24	HEX NUT	D06 15991	4		CASING HEATERS:		
25 *	O-RING	25152-381	2		-120V	47811-105	1
26 *	O-RING	S1676	1		-240V	47811-106	1
27	PIPE PLUG	P08 15079	2		PRESS RELIEF VALVE:		
28 *	PRESSURE RELIEF VALVE	26662-006	1		BRASS SEWAGE TYPE	46431-803	1
☞ 29	STUD	C1213 15991	4		AIR RELEASE VALVES:		
30	ADJUSTING SCREW	31871-070 1500G	4		-10# COMP SPRING	GRP33-07A	1
31	BACK COVER NUT	31871-073 15000	4		-25# COMP SPRING	GRP33-07	1
32	LOCK COLLAR	38115-551 15001	4		-80# COMP SPRING	GRP33-07B	1
					A/R VALVE MOUNT KIT	46331-515	1

* INDICATES PARTS RECOMMENDED FOR STOCK

☞ INCLUDED WITH REPAIR 46471-716 1
 PUMP CASING ASSY

>VICTAULIC® IS A REGISTERED TRADEMARK OF VICTAULIC COMPANY OF AMERICA

ILLUSTRATION

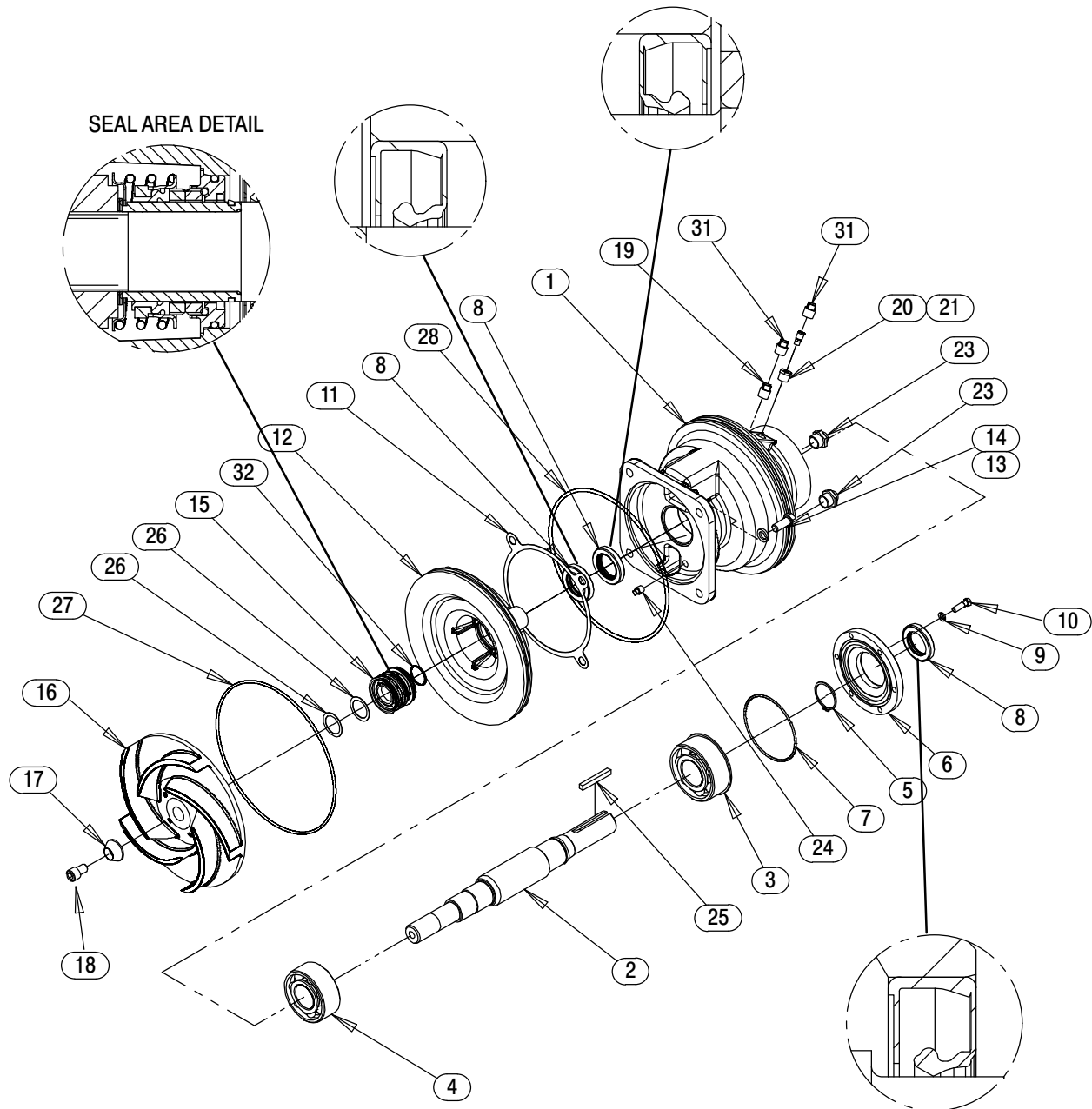


Figure 2. Repair Rotating Assembly

PARTS LIST
Repair Rotating Assembly

ITEM NO.	PART NAME	PART NUMBER	QTY
1	BEARING HOUSING	38251-418 10000	1
2	IMPELLER SHAFT	38514-825 16040	1
3	* DBL ROW BALL BEARING	23422-412	1
4	* DBL ROW BALL BEARING	23421-461	1
5	RETAINING RING	S215	1
6	BEARING CAP	38322-415 10010	1
7	* O-RING	S333	1
8	* OIL SEAL	S1917	3
9	LOCK WASHER	J06 15991	6
10	HEX HEAD CAP SCREW	B0605-1/2 15991	6
11	* SEAL PLATE GASKET	12350G 20000	1
12	SEAL PLATE	38272-408 10010	1
13	LOCK WASHER	J10 15991	4
14	HEX HEAD CAP SCREW	B1006 15991	4
15	* 1 7/8 CTG SEAL ASSY	46513-154	1
16	* IMPELLER	38618-016 11010	1
17	* IMPELLER WASHER	10278 15030	1
18	* SOCKET HEAD CAP SCREW	DM1004S 15991	1
19	VENTED PIPE PLUG	4823A 15079	1
20	REDUCER PIPE BUSHING	AP0802 15079	1
21	AIR VENT	S1530	1
22	PIPE PLUG	P12 15079	1
23	SIGHT GAUGE	S1471	2
24	PIPE PLUG	P04 15079	3
25	* KEY	N0612 15990	1
26	* ADJ SHIM SET	5091 17090	REF
27	* O-RING	25152-381	1
28	* O-RING	25152-453	1
29	ASSEMBLY PLATE	2613GG 13990	1
30	DRIVE SCREW	BM#04-03 17000	2
31	SHIP PLUG	11495B 15079	2
32	* O-RING	25154-026	REF
NOT SHOWN:			
	ADJ SHIM	13130-3 17040	12
	ROTATION DECAL	2613M	1
	INSTRUCTION TAG	6588U	1
OPTIONAL			
†/✓	KALREZ® METAL BELLOWS SEAL ASSY	46512-185	1
†	PERMALON COATED SEAL	46512-189	1
	ADI IMPELLER	38618-016	1
	ADI SEAL PLATE	38272-408	1
	SST IMPELLER	38618-016 17040	1
	SST SEAL PLATE	38272-408 17040	1
	SST IMPELLER WASHER	10278 17090	1
	SST IMPELLER CAPSCREW	DM1004S 17090	1
	SST IMPELLER SHAFT	38515-591	1

* INDICATES PARTS RECOMMENDED FOR STOCK

† OPTIONAL MECHANICAL SEAL(S) MUST BE USED WITH 38515-591 1706H SST SHAFT.

✓ KALREZ® IS A REGISTERED TRADEMARK OF THE DUPONT CORP.