

ILLUSTRATION

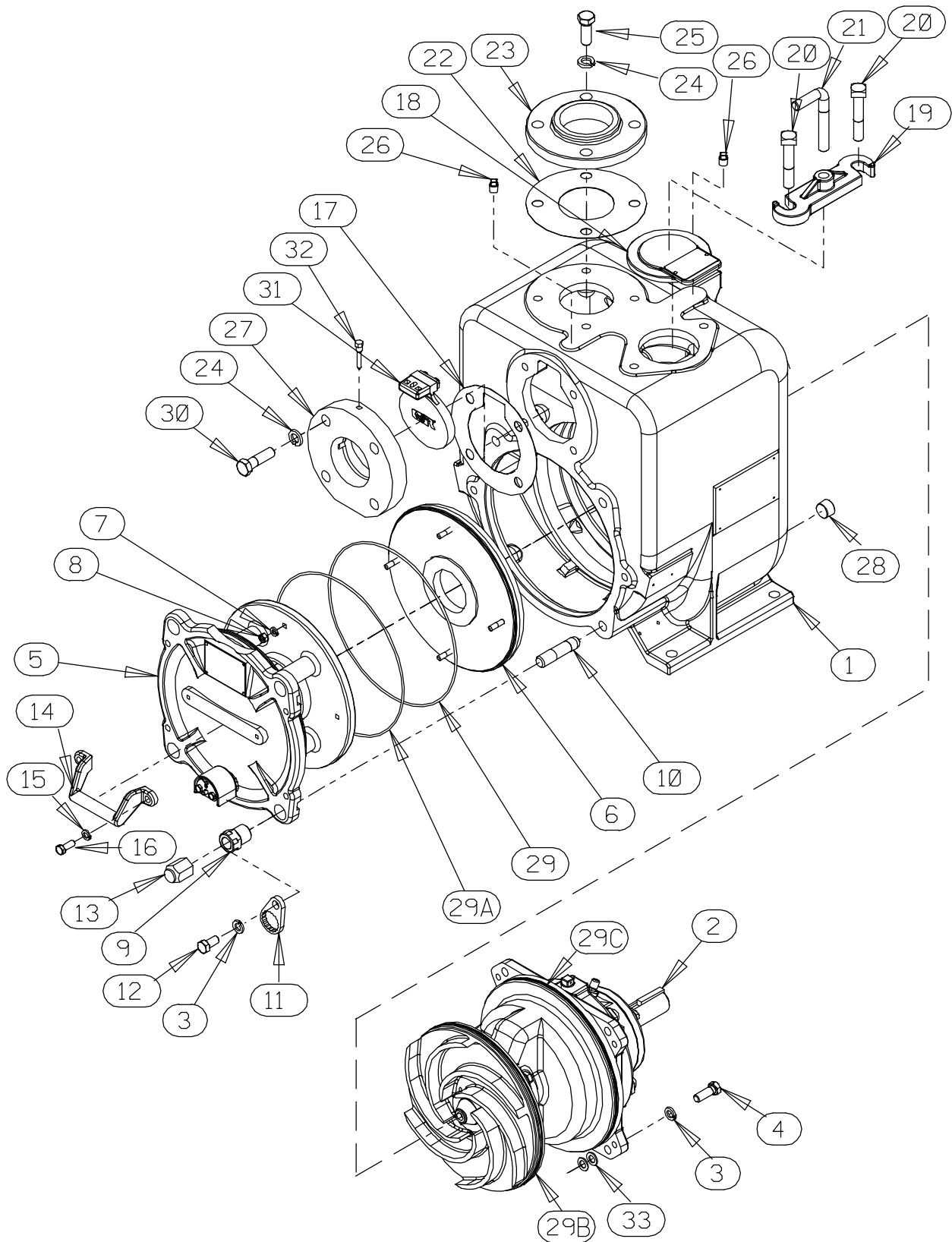


Figure 1. Pump Model U3B65S-B, Including /F

PARTS LIST
Pump Model U3B65S-B, Including /F
 (From S/N 1292028 Up)

If your pump serial number is followed by an "N", your pump is **NOT** a standard production model. Contact the Gorman-Rupp Company to verify part numbers.

ITEM NO.	PART NAME	PART NUMBER	QTY	ITEM NO.	PART NAME	PART NUMBER	QTY
1	PUMP CASING	SEE NOTE BELOW	1	NOT SHOWN:			
2	REPAIR ROTATING ASSY	44163-411	1		ROTATION DECAL	2613M	1
3	LOCK WASHER	J08 17090	8		NAMEPLATE	38818-026 17040	1
4	HEX HEAD CAP SCREW	B0806 17090	4		DRIVE SCREW	BM#04-03 17090	4
5	COVER PLATE ASSY	42111-825	1		LUBE DECAL	38817-084	1
	-WARNING PLATE	2613EV 17090	1		SUCTION STICKER	6588AG	1
	-DRIVE SCREW	BM#04-03 17090	4		PRIMING STICKER	6588AH	1
	* -PRESS RELIEF VALVE	46431-803	1		DISCHARGE STICKER	6588BJ	1
	-WARNING DECAL	38816-302	1		G-R DECAL	GR-03	1
6 *	WEAR PLATE ASSY	46451-736	1		INSTRUCTION TAG	38817-023	1
7	LOCK WASHER	J05 17090	4		SUPER "U" DECAL	38812-094	1
8	HEX NUT	D05 17090	4		WARNING DECAL	2613FE	1
9	ADJUSTING SCREW	31871-070 1704G	4		INSTRUCTION TAG	38817-011	1
10	STUD	C1213 1706G	4	OPTIONAL:			
11	LOCK COLLAR	38115-551 17040	4		DISASSEMBLY TOOL	48711-020	1
12	HEX HEAD CAP SCREW	B0804-1/2 17090	4		/F FLANGE KIT	48213-068	1
13	BACK COVER NUT	31871-073 17040	4		-SUCTION	11412A 17180	1
14	HANDLE	12354 17040	1		-DISCHARGE	10845 17180	1
15	LOCK WASHER	J06 17090	2		METRIC FLANGES	48213-076	1
16	HEX HEAD CAP SCREW	B0604 17090	2		-SUCTION	38642-208 17180	1
17 *	SUCT FLANGE GASKET	11412G 19410	1		-DISCHARGE	38642-209 17180	1
18	BACK COVER PLATE ASSY	42111-385	1		CHECK VALVE ASSEMBLIES:		
	-WARNING PLATE	38816-097 17090	1		-NEO SOLID TYPE	46411-043	1
	-DRIVE SCREW	BM#04-03 17090	2	✓	-VITON SOLID	46411-086	1
	* -GASKET	50G 19210	1		-BUNA-N	46411-102	1
19	CLAMP BAR	38111-004 17040	1		-EPDM	46411-120	1
20	MACHINE BOLT	A1014 17090	2		CASING HEATERS:		
21	CLAMP BAR SCREW	31912-009 17040	1		-120V	47811-066	1
22 *	GASKET	1674GC 19410	1		-240V	47811-067	1
23	COMPANION FLANGE	1753A 17070	1		HI TEMP SHUT-DOWN KITS:		
24	LOCK WASHER	J10 17090	8		-145°F	48313-186	1
25	HEX HEAD CAP SCREW	B1007 17090	4		-130°F	48313-256	1
26	PIPE PLUG	P04 17090	4		-120°F	48313-257	1
27	SUCTION FLANGE	11412 17180	1		HI TEMP SHUT-DOWN THERMOSTAT KIT:		
28	CASING DRAIN PLUG	P12 17090	2		-145°F	48313-172	1
29 *	O-RING	25154-276	1		AIR RELEASE VALVES:		
29A *	O-RING	25154-276	1		-10# COMP SPRING	GRP33-07A	1
29B *	O-RING	25154-276	1		-25# COMP SPRING	GRP33-07	1
29C *	O-RING	25154-276	1		-80# COMP SPRING	GRP33-07B	1
30	HEX HEAD CAP SCREW	B1009 17090	4		AIR REL VALVE MNTG KIT	46331-515	1
31 *	FLAP VALVE ASSY	46411-100	1				
32	CHECK VALVE PIN	11557A 17040	1				
33	ROT ASSY ADJ SHIM	13130-3 17040	8				

* INDICATES PARTS RECOMMENDED FOR STOCK

☞ INCLUDED WITH REPAIR 46471-710 1
 PUMP CASING ASSY

✓ VITON® IS A REGISTERED TRADEMARK OF THE DUPONT CORP

ILLUSTRATION

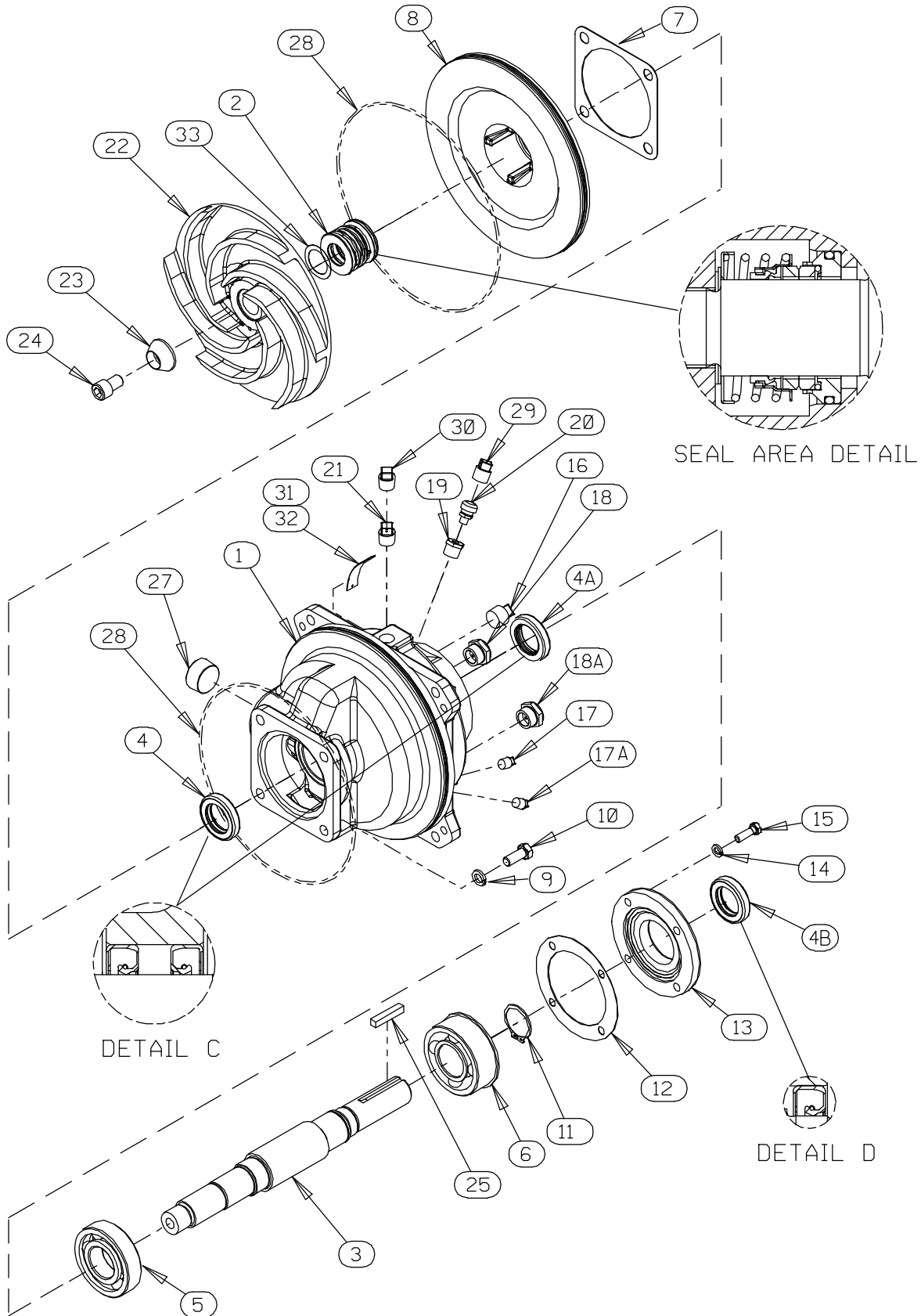


Figure 2. Repair Rotating Assembly

PARTS LIST

Repair Rotating Assembly

ITEM NO.	PART NAME	PART NUMBER	QTY	ITEM NO.	PART NAME	PART NUMBER	QTY
1	BEARING HOUSING	38251-520 17180	1	21	VENTED PIPE PLUG	4823A 17040	1
2 *	MECH SEAL ASSEMBLY	46512-074	1	22 *	IMPELLER	38619-015 1718H	1
3 *	IMPELLER SHAFT	38514-572 1706H	1	23	IMPELLER WASHER	10278 17090	1
4 *	OIL SEAL	S1352	1	24	SOCK HEAD CAP SCREW	DM1004S 17090	1
4A *	OIL SEAL	S1352	1	25 *	SHAFT KEY	N0608 17040	1
4B *	OIL SEAL	S1352	1	26 *	IMP ADJ SHIM SET	37J 17090	1
5 *	BALL BEARING	S1088	1	27	SOC HD PIPE PLUG	PC20 17040	1
6 *	BALL BEARING	S375	1	28 *	BRG HSG O-RING	25154-276	1
7 *	GASKET	10959G 19410	1	28A *	SEAL PLATE O-RING	25154-276	1
8	SEAL PLATE	38272-235 1718H	1	29	SHIPPING PLUG	11495B 15079	1
9	LOCK WASHER	J08 17090	4	30	SHIPPING PLUG	11495B 15079	1
10	HEX HEAD CAP SCREW	B0805 17090	4	31	S/N PLATE	2613GG 17020	1
11	RETAINING RING	S442	1	32	DRIVE SCREW	BM#04-03 17000	2
12 *	GASKET	38683-271 19410	1	33	IMPELLER ADJ SHIM	13130-3 17040	8
13	BEARING CAP	38322-220 17040	1	NOT SHOWN:			
14	LOCK WASHER	J06 17090	4		ROTATION DECAL	2613M	1
15	HEX HEAD CAP SCREW	B0605 17090	4		INSTRUCTION TAG	6588U	1
16	PIPE PLUG	P12 17090	1	OPTIONAL:			
17	BRG CVTU DRAIN PLUG	P04 17090	1	† ★	AFLAS SEAL	46512-194	1
17A	SEAL CVTY DRAIN PLUG	P04 17090	1		SEAL PLATE	38272-243	1
18	BRG CVTU SIGHT GAUGE	26714-021	1	†	-METAL BELLOWS MECH SEAL ASSY		
18A	SEAL CVTY SIGHT GAUGE	26714-021	1	✓	(VITON OR EQUAL)	46512-147	1
19	REDUCER PIPE BUSHING	AP0802 17040	1	†	-METAL BELLOWS MECH SEAL ASSY		
20	VENT	26717-006	1	✓	(KALREZ)	46512-142	1

* INDICATES PARTS RECOMMENDED FOR STOCK

† OPTIONAL METAL BELLOWS SEAL(S) MUST BE USED WITH OPTIONAL SEAL PLATE.

✓ KALREZ® AND VITON™ ARE REGISTERED TRADEMARKS OF THE DUPONT CORP.

★ AFLAS® IS A REGISTERED TRADEMARK OF THE 3M CORP.