

ILLUSTRATION

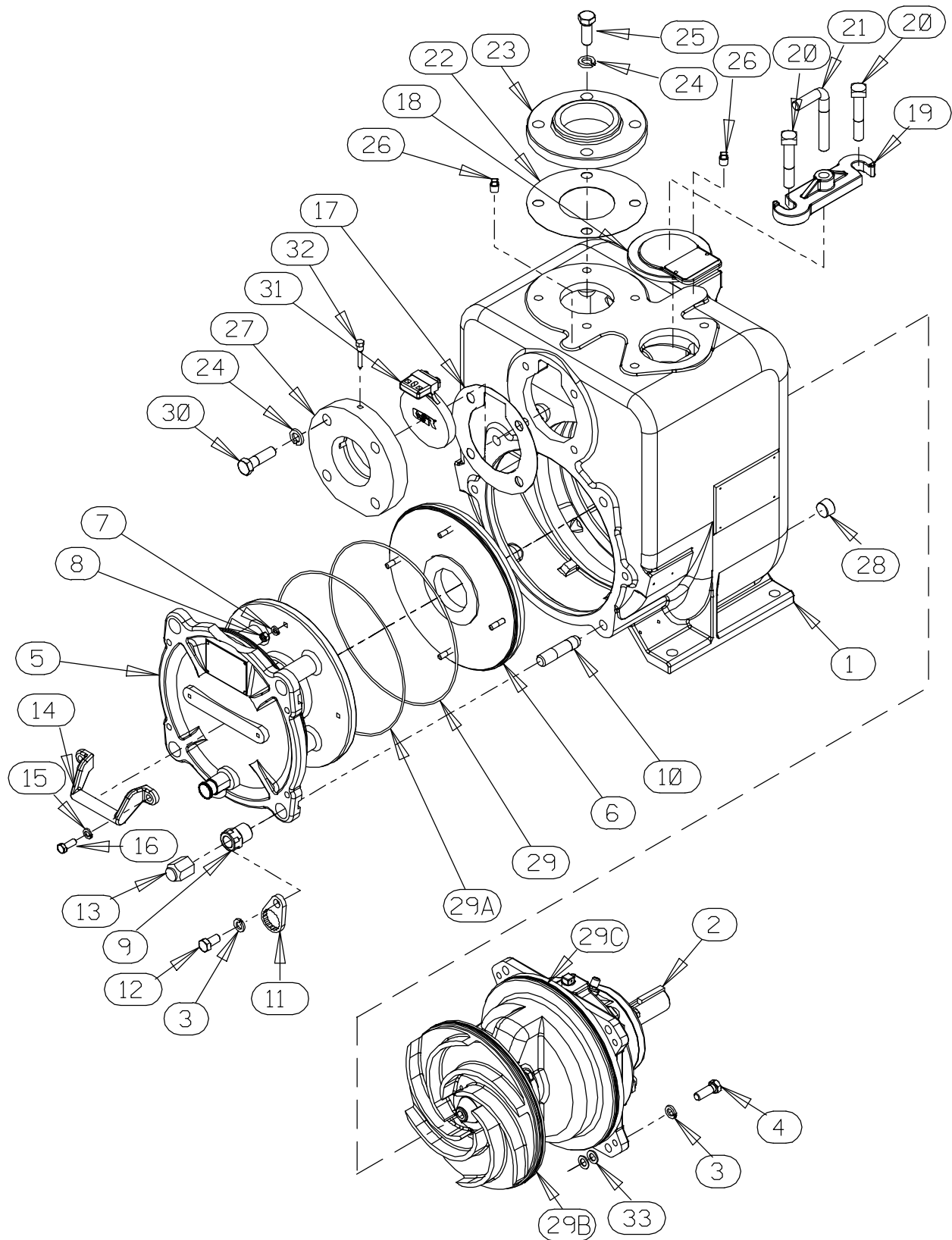


Figure 1. Pump Model U3B60S-B, Including /F, /FM, /WW

## PARTS LIST

### Pump Model U3B60S-B, Including /F, /FM, /WW

(From S/N 1289509 Up)

If your pump serial number is followed by an "N", your pump is **NOT** a standard production model. Contact the Gorman-Rupp Company to verify part numbers.

| ITEM NO. | PART NAME             | PART NUMBER     | QTY | ITEM NO.   | PART NAME               | PART NUMBER     | QTY |
|----------|-----------------------|-----------------|-----|------------|-------------------------|-----------------|-----|
| ☐ 1      | PUMP CASING           | SEE NOTE BELOW  | 1   | NOT SHOWN: |                         |                 |     |
| 2        | REPAIR ROTATING ASSY  |                 |     |            | ROTATION DECAL          | 2613M           | 1   |
|          | U3B60S-B, /F, /FM     | 44163-409       | 1   |            | NAMEPLATE               | 38818-026 13990 | 1   |
|          | U3B60S-B /WW          | 44163-415       | 1   |            | DRIVE SCREW             | BM#04-03 17000  | 4   |
| 3        | LOCK WASHER           | J08 15991       | 8   |            | LUBE DECAL              | 38817-084       | 1   |
| 4        | HEX HEAD CAP SCREW    | B0806 15991     | 4   |            | SUCTION STICKER         | 6588AG          | 1   |
| 5        | BACK COVER PLATE ASSY | 42111-824       | 1   |            | PRIMING STICKER         | 6588AH          | 1   |
|          | -WARNING PLATE        | 2613EV 13990    | 1   |            | DISCHARGE STICKER       | 6588BJ          | 1   |
|          | -DRIVE SCREW          | BM#04-03 17000  | 4   |            | G-R DECAL               | GR-03           | 1   |
| *        | -PRESS RELIEF VALVE   | 26662-006       | 1   |            | INSTRUCTION TAG         | 38817-023       | 1   |
|          | -WARNING DECAL        | 38816-302       | 1   |            | SUPER "U" DECAL         | 38812-094       | 1   |
| 6 *      | WEAR PLATE ASSY       | 46451-735       | 1   |            | WARNING DECAL           | 2613FE          | 1   |
| 7        | LOCK WASHER           | J05 15991       | 4   |            | INSTRUCTION TAG         | 38817-011       | 1   |
| 8        | HEX NUT               | D05 15991       | 4   |            | OPTIONAL                |                 |     |
| 9        | ADJUSTING SCREW       | 31871-070 1500G | 4   |            | DISASSEMBLY TOOL        | 48711-020       | 1   |
| ☐ 10     | STUD                  | C1213 15991     | 4   |            | WEAR PLATE ASSY:        |                 |     |
| 11       | LOCK COLLAR           | 38115-551 15001 | 4   |            | -316 SST                | 46451-748       | 1   |
| 12       | HEX HEAD CAP SCREW    | B0804-1/2 15991 | 4   |            | -CD4MCU SST             | 46451-736       | 1   |
| 13       | BACK COVER NUT        | 31871-073 15000 | 4   |            | -G-R HARD IRON          | 46451-745       | 1   |
| 14       | HANDLE                | 12354 13010     | 1   |            | /F FLANGE KIT           | 48213-040       | 1   |
| 15       | LOCK WASHER           | J06 15991       | 2   |            | -SUCTION                | 11412A 10010    | 1   |
| 16       | HEX HEAD CAP SCREW    | B0604 15991     | 2   |            | -DISCHARGE              | 10845 10010     | 1   |
| 17 *     | SUCT FLANGE GASKET    | 11412G 19370    | 1   |            | /FM METRIC FLANGE KIT   | 48213-076       | 1   |
| 18       | FILL COVER PLATE ASSY | 42111-344       | 1   |            | -SUCTION                | 38642-208 10000 | 1   |
|          | -WARNING PLATE        | 38816-097 13990 | 1   |            | -DISCHARGE              | 38642-209 10000 | 1   |
|          | -DRIVE SCREW          | BM#04-03 17000  | 2   |            | CASING HEATERS:         |                 |     |
| *        | -FILL COVER GASKET    | 50G 19210       | 1   |            | -120V                   | 47811-066       | 1   |
| 19       | CLAMP BAR             | 38111-004 11010 | 1   |            | -240V                   | 47811-067       | 1   |
| ☐ 20     | MACHINE BOLT          | A1014 15991     | 2   |            | CHECK VALVE ASSYS:      |                 |     |
| 21       | CLAMP BAR SCREW       | 31912-009 15000 | 1   |            | -NEO SOLID TYPE         | 46411-043       | 1   |
| 22 *     | GASKET                | 25113-033       | 1   | ✓          | -VITON SOLID            | 46411-086       | 1   |
| 23       | COMPANION FLANGE      | 1753A 10010     | 1   | ✓          | -VITON BLOW-OUT         | 46411-074       | 1   |
| 24       | LOCK WASHER           | J10 15991       | 8   |            | -BUNA-N                 | 46411-102       | 1   |
| 25       | HEX HEAD CAP SCREW    | B1007 15991     | 4   |            | -EPDM                   | 46411-120       | 1   |
| ☐ 26     | PIPE PLUG             | P04 15079       | 4   |            | PRESS RELIEF VALVE:     |                 |     |
| 27       | SUCTION FLANGE        | 11412 10010     | 1   |            | -STAINLESS STEEL        | 26662-101       | 1   |
| ☐ 28     | SOC HD PIPE PLUG      | 25321-145       | 2   |            | HI TEMP SHUT-DOWN KITS: |                 |     |
| 29 *     | WEAR PLATE O-RING     | 25152-276       | 1   |            | -145°F                  | 48313-186       | 1   |
| 29A *    | BACK COVER O-RING     | 25152-276       | 1   |            | -130°F                  | 48313-256       | 1   |
| 29B *    | SEAL PLATE O-RING     | 25152-276       | 1   |            | -120°F                  | 48313-257       | 1   |
| 29C *    | BRG HOUSING O-RING    | 25152-276       | 1   |            | HI TEMP SHUT-DOWN       |                 |     |
| 30       | HEX HEAD CAP SCREW    | B1009 15991     | 4   |            | THERMOSTAT KITS 145°F   | 48313-172       | 1   |
| 31 *     | 3 IN FLAP VALVE ASSY  | 46411-060       | 1   |            | AIR RELEASE VALVES:     |                 |     |
| 32       | CHECK VALVE PIN       | 11557A 17010    | 1   |            | -10# COMP SPRING        | GRP33-07A       | 1   |
| 33       | ROT ASSY ADJ SHIM     | 13130-3 17040   | 8   |            | -25# COMP SPRING        | GRP33-07        | 1   |
|          |                       |                 |     |            | -80# COMP SPRING        | GRP33-07B       | 1   |
|          |                       |                 |     |            | A/R VALVE MOUNT KIT     | 46331-515       | 1   |

\* INDICATES PARTS RECOMMENDED FOR STOCK

☐ INCLUDED WITH REPAIR 46471-714 1  
PUMP CASING ASSY

✓ VITON® IS A REGISTERED TRADEMARK OF THE DUPONT CORP

ILLUSTRATION

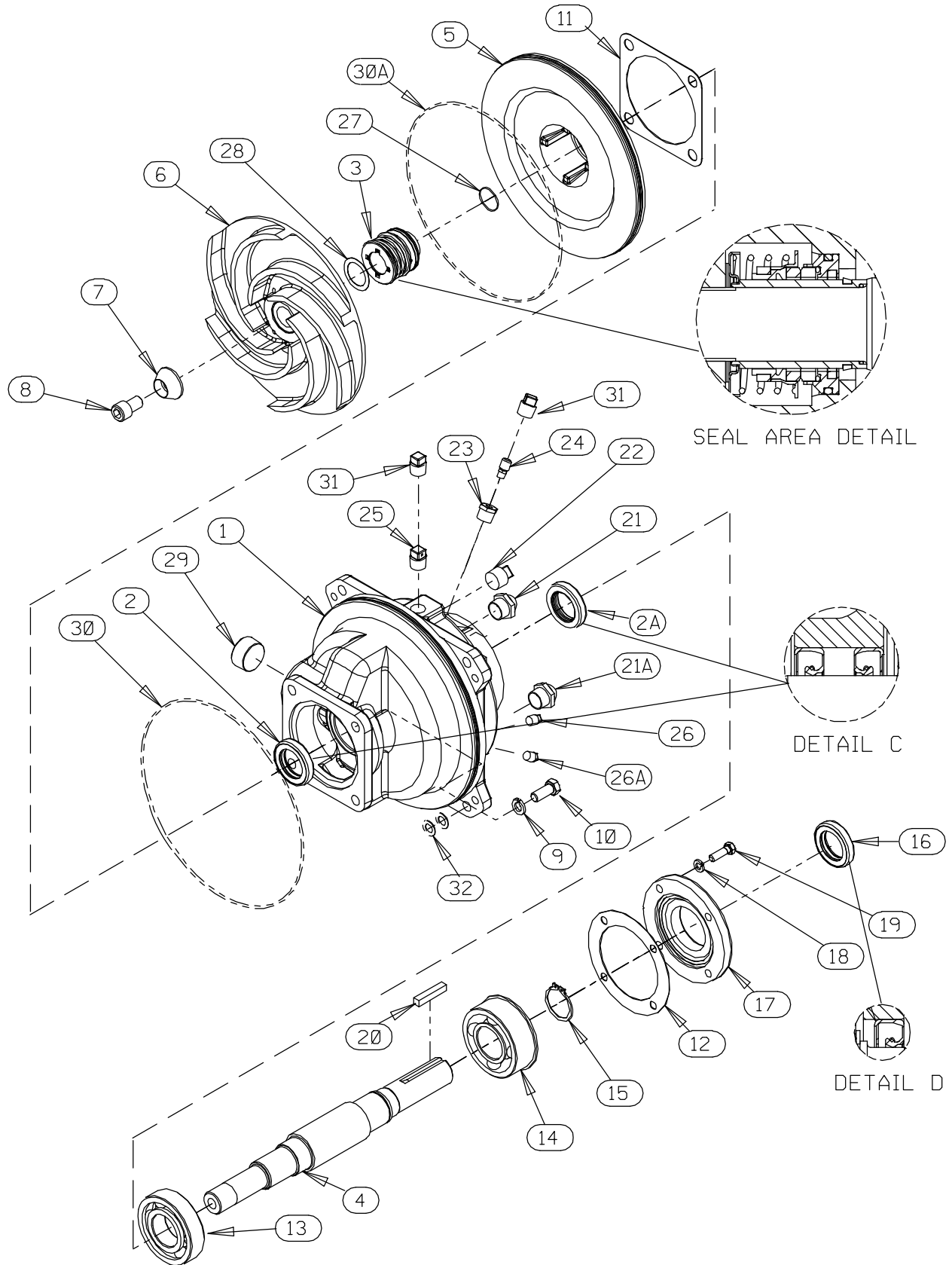


Figure 2. Repair Rotating Assemblies

## PARTS LIST

### Repair Rotating Assemblies

**Note:** Order complete Repair Rotating Assembly for /WW model from the Pump Model Assembly Parts List on page E-3. Repair Rotating Assembly for /WW models include all of the standard parts listed below.

| ITEM NO. | PART NAME             | PART NUMBER | QTY   | ITEM NO. | PART NAME  | PART NUMBER     | QTY |
|----------|-----------------------|-------------|-------|----------|--|-----------------|-----|
| 1        | BEARING HOUSING       | 38251-520   | 10000 | 1        |  |                 |     |
| 2 *      | OIL SEAL              | S1352       |       | 1        |  |                 |     |
| 2A *     | OIL SEAL              | S1352       |       | 1        |  |                 |     |
| 3 *      | CART SEAL ASSY        | 46513-151   |       | 1        |  |                 |     |
| 4 *      | IMPELLER SHAFT        | 38514-571   | 16040 | 1        |  |                 |     |
| 5        | SEAL PLATE            | 38272-235   | 10010 | 1        |  |                 |     |
| 6 *      | IMPELLER              | 38619-015   | 11000 | 1        |  |                 |     |
| 7        | IMPELLER WASHER       | 10278       | 15030 | 1        |  |                 |     |
| 8        | SOC HD CAP SCREW      | DM1004S     | 15991 | 1        |  |                 |     |
| 9        | LOCK WASHER           | J08         | 15991 | 4        |  |                 |     |
| 10       | HEX HD CAP SCREW      | B0805       | 15991 | 4        |  |                 |     |
| 11 *     | GASKET                | 10959G      | 20000 | 1        |  |                 |     |
| 12 *     | GASKET                | 38683-271   | 18000 | 1        |  |                 |     |
| 13 *     | BALL BEARING          | S1088       |       | 1        |  |                 |     |
| 14 *     | DBL ROW BALL BRG      | S375        |       | 1        |  |                 |     |
| 15       | RETAINING RING        | S442        |       | 1        |  |                 |     |
| 16 *     | OIL SEAL              | S1352       |       | 1        |  |                 |     |
| 17       | BEARING CAP           | 38322-220   | 10000 | 1        |  |                 |     |
| 18       | LOCK WASHER           | J06         | 15991 | 4        |  |                 |     |
| 19       | HEX HD CAP SCREW      | B0605       | 15991 | 4        |  |                 |     |
| 20 *     | SHAFT KEY             | N0608       | 15990 | 1        |  |                 |     |
| 21       | SEAL CVTY SIGHT GAUGE | S1471       |       | 1        |  |                 |     |
| 21A      | BRG CVTY SIGHT GAUGE  | S1471       |       | 1        |  |                 |     |
| 22       | PIPE PLUG             | P12         | 15079 | 1        |  |                 |     |
| 23       | RED PIPE BUSHING      | AP0802      | 15079 | 1        |  |                 |     |
| 24       | AIR VENT              | S1530       |       | 1        |  |                 |     |
| 25       | VENTED PIPE PLUG      | 4823A       | 15079 | 1        |  |                 |     |
| 26       | SEAL CVTY DRAIN PLUG  | P04         | 15079 | 1        |  |                 |     |
| 26A      | BRG CVTY DRAIN PLUG   | P04         | 15079 | 1        |  |                 |     |
| 27       | O-RING                | 25154-022   |       | REF      |  |                 |     |
| 28       | IMP ADJ SHIM SET      | 37J         | 17090 | REF      |  |                 |     |
| 29       | SOC HD PIPE PLUG      | PC20        | 10009 | 1        |  |                 |     |
| 30 *     | O-RING                | 25152-276   |       | 1        |  |                 |     |
| 30A *    | O-RING                | 25152-276   |       | 1        |  |                 |     |
| 31       | SHIPPING PLUG         | 11495B      | 15079 | 2        |  |                 |     |
| 32       | ROT ASSY ADJ SHIM     | 13130-3     | 17040 | 8        |  |                 |     |
|          |                       |             |       |          | NOT SHOWN:                                       |                 |     |
|          |                       |             |       |          | S/N PLATE  | 2613GG 13990    | 1   |
|          |                       |             |       |          | DRIVE SCREW                                      | BM#04-03 17000  | 2   |
|          |                       |             |       |          | ROTATION DECAL                                   | 2613M           | 1   |
|          |                       |             |       |          | INSRUCTION TAG                                   | 6588U           | 1   |
|          |                       |             |       |          | OPTIONAL:  |                 |     |
|          |                       |             |       |          | IMPELLERS:                                       |                 |     |
|          |                       |             |       |          | -G-R HARD IRON                                   | 38619-015       | 1   |
|          |                       |             |       |          | -316 SST   | 38619-015 17040 | 1   |
|          |                       |             |       |          | -CD4MCU SST                                      | 38619-015       | 1   |
|          |                       |             |       |          | SEAL PLATES:                                     |                 |     |
|          |                       |             |       |          | -G-R HARD IRON                                   | 38272-235       | 1   |
|          |                       |             |       |          | -316 SST   | 38272-235 17040 | 1   |
|          |                       |             |       |          | -CD4MCU SST                                      | 38272-235       | 1   |
|          |                       |             |       |          | STAINLESS STEEL PARTS:                           |                 |     |
|          |                       |             |       |          | -IMP SHAFT                                       |                 |     |
|          |                       |             |       |          | (LESS SLEEVE)                                    | 38514-572       | 1   |
|          |                       |             |       |          | -IMPELLER WASHER                                 | 10278 17090     | 1   |
|          |                       |             |       |          | -IMP CAPSCREW                                    | DM1004S 17090   | 1   |
|          |                       |             |       |          | -SEAL ASSEMBLY                                   | 46512-074       | 1   |
|          |                       |             |       | †        | STD MECHANICAL SEAL ASSEMBLY                     | 46512-047       | 1   |
|          |                       |             |       | ‡        | STD MECHANICAL SEAL SHAFT SLEEVE                 | 11876A 16000    | 1   |
|          |                       |             |       | † ★      | AFLAS SEAL (USE W/SST SLEEVE OR SOLID SST SHAFT) | 46512-194       | 1   |
|          |                       |             |       | ‡        | METAL BELLOWS MECH SEAL ASSY (VITON OR EQUAL)    | 46512-147       | 1   |
|          |                       |             |       | ‡        | METAL BELLOWS MECH SEAL ASSY (KALREZ)            | 46512-142       | 1   |

\* INDICATES PARTS RECOMMENDED FOR STOCK

† OPTIONAL MECHANICAL SEAL(S) MUST BE USED WITH MECHANICAL SEAL SHAFT SLEEVE OR SOLID SST SHAFT.

✓ KALREZ® AND VITON™ ARE REGISTERED TRADEMARKS OF THE DUPONT CORP.

★ AFLAS® IS A REGISTERED TRADEMARK OF THE 3M CORP.