

ILLUSTRATION

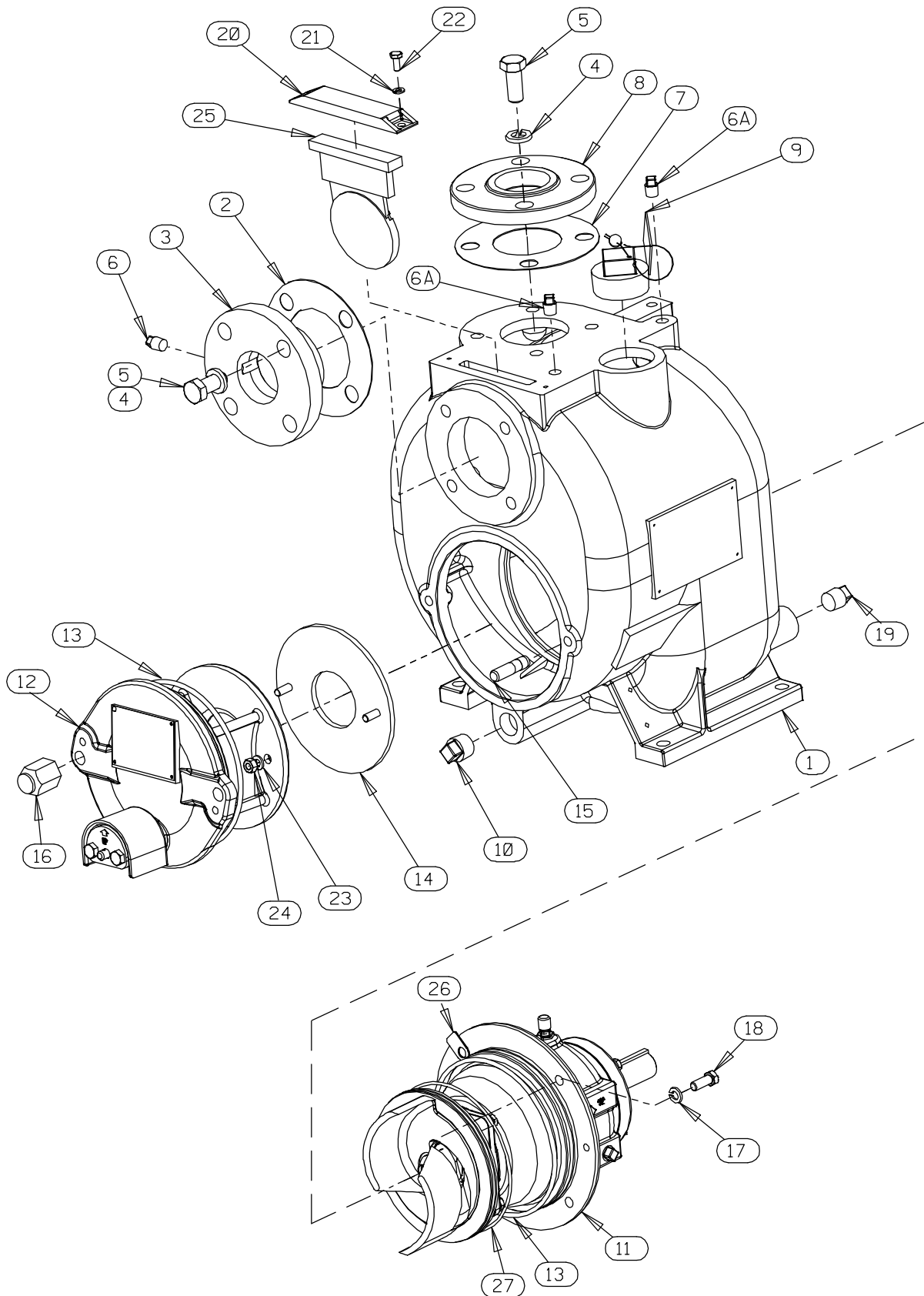


Figure 1. Pump Model T2A65-B, Including /F, /FM

PARTS LIST
Pump Model T2A65-B, Including /F, /FM
 (From S/N 1251058 Up)

If your pump serial number is followed by an "N", your pump is **NOT** a standard production model. Contact the Gorman-Rupp Company to verify part numbers.

| ITEM NO. | PART NAME | PART NUMBER | QTY | ITEM NO. | PART NAME | PART NUMBER | QTY |
|----------|-----------------------|-----------------|-----|------------|-----------------------|-----------------|-----|
| 1 | PUMP CASING | SEE NOTE BELOW | 1 | 21 | LOCK WASHER | J04 17090 | 2 |
| 2 | SUCTION FLG GSKT | 38683-273 19410 | 1 | 22 | HEX HEAD CAP SCREW | B0402-1/2 17040 | 2 |
| 3 | SUCTION FLANGE | 38641-039 17180 | 1 | 23 | LOCK WASHER | J05 17090 | 2 |
| 4 | LOCK WASHER | J10 17090 | 8 | 24 | HEX NUT | D05 17090 | 2 |
| 5 | HEX HEAD CAP SCREW | B1006 17090 | 8 | 25 * | FLAP VALVE | 46411-133 24010 | 1 |
| 6 | PIPE PLUG | P04 17090 | 1 | 26 | ROT ASSY ADJ SHIM SET | 48261-058 | 4 |
| 6A | PIPE PLUG | P04 17090 | 2 | 27 * | O-RING | 25154-259 | 1 |
| 7 * | FLANGE GASKET | 38683-273 19410 | 1 | NOT SHOWN: | | | |
| 8 | COMPANION FLANGE | 38641-040 17040 | 1 | | DISCHARGE STICKER | 6588BJ | 1 |
| 9 | FILL PLUG ASSY | 48271-098 | 1 | | PRIMING STICKER | 6588AH | 1 |
| 10 | CASING DRAIN PLUG | P12 17090 | 1 | | SUCTION STICKER | 6588AG | 1 |
| 11 | REPAIR ROTATING ASSY | 44163-341 | 1 | | WARNING DECAL | 2613FE | 1 |
| 12 | BACK COVER PLATE ASSY | 42111-814 | 1 | | ROTATION DECAL | 2613M | 1 |
| | -WARNING PLATE | 2613EV 17090 | 1 | | NAME PLATE | 38819-002 17040 | 1 |
| | -DRIVE SCREW | BM#04-03 17000 | 4 | | DRIVE SCREW | BM#04-03 17000 | 4 |
| | -WARNING DECAL | 38816-302 | 1 | | LUBE DECAL | 11421 | 1 |
| | -PRESS RELIEF VALVE | 46431-803 | 1 | | G-R DECAL | GR-03 | 1 |
| 13 * | O-RING | 25154-363 | 2 | OPTIONAL: | | | |
| 14 * | WEAR PLATE ASSY | 46451-370 17180 | 1 | | /F FLANGES | | |
| 15 | STUD | C0808 17090 | 2 | | -SUCTION FLANGE | 38642-009 17180 | 1 |
| 16 | BACK COVER NUT | 31871-075 17040 | 2 | | -DISCHARGE FLANGE | 38642-008 17180 | 1 |
| 17 | LOCK WASHER | J06 17090 | 4 | | /FM METRIC FLANGES | | |
| 18 | HEX HEAD CAP SCREW | B0604 17090 | 4 | | -SUCTION FLANGE | 38642-006 17180 | 1 |
| 19 | PIPE PLUG | P08 17090 | 2 | | -DISCHARGE FLANGE | 38642-007 17180 | 1 |
| 20 | FLAP VALVE COVER | 38346-617 17070 | 1 | | | | |

* INDICATES PARTS RECOMMENDED FOR STOCK

INCLUDED WITH REPAIR 46472-726 1
 PUMP CASING ASSY

ILLUSTRATION

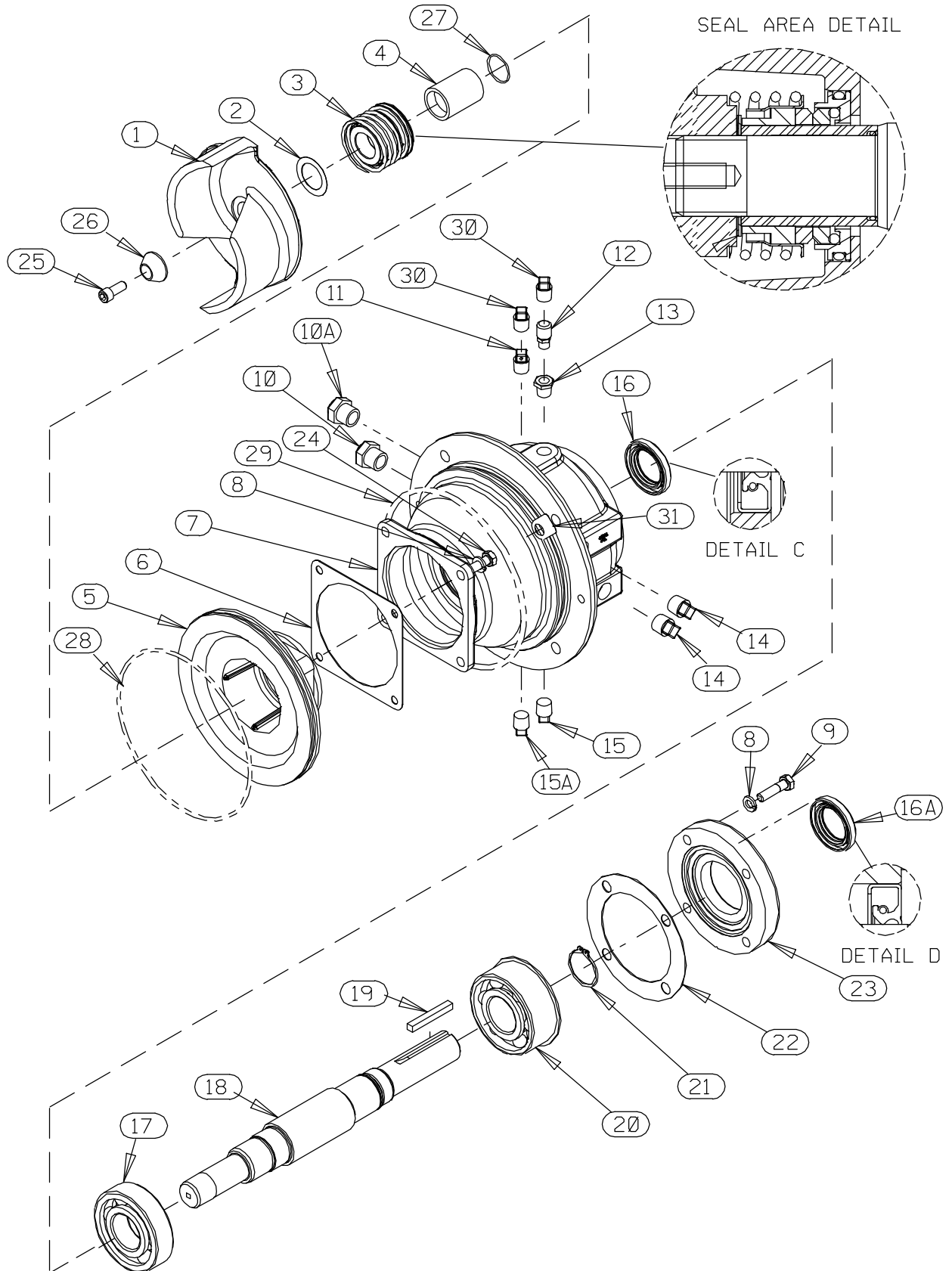


Figure 2. Repair Rotating Assembly

PARTS LIST

Repair Rotating Assembly

| ITEM NO. | PART NAME | PART NUMBER | QTY | ITEM NO. | PART NAME | PART NUMBER | QTY |
|----------|-----------------------|-----------------|-----|------------|-----------------------|-----------------|-----|
| 1 * | IMPELLER | 38615-093 1718H | 1 | 17 * | BALL BEARING | 23276-008 | 1 |
| 2 | IMP ADJ SHIM SET | 2X 17090 | 1 | 18 | IMPELLER SHAFT | 38514-565 1706H | 1 |
| 3 * | MECH SEAL ASSY | 46512-159 | 1 | 19 * | KEY | N0408 17090 | 1 |
| 4 * | SHAFT SLEEVE | 31441-037 17070 | 1 | 20 * | BALL BEARING | 23422-408 | 1 |
| 5 | SEAL PLATE | 38272-119 1718H | 1 | 21 | RETAINING RING | S248 | 1 |
| 6 * | GASKET | 38687-556 19410 | 1 | 22 * | BRG CAP GASKET | 38683-268 19410 | 1 |
| 7 | BRG HOUSING | 38251-208 17180 | 1 | 23 | BEARING CAP | 38322-221 17180 | 1 |
| 8 | LOCK WASHER | J05 17090 | 8 | 24 | HEX HD CAP SCREW | B0503-1/2 17000 | 4 |
| 9 | HEX HD CAP SCREW | B0505 17090 | 4 | 25 | SOC HD CAP SCREW | DM0503 17040 | 1 |
| 10 | BRG CVTY SIGHT GAUGE | 26714-011 | 1 | 26 | IMPELLER WASHER | 31167-025 17040 | 1 |
| 10A | SEAL CVTY SIGHT GAUGE | 26714-011 | 1 | 27 * | SHAFT SLEEVE O-RING | 25154-020 | 1 |
| 11 | VENTED PIPE PLUG | 4823 17040 | 1 | 28 * | SEAL PLATE O-RING | 25154-259 | 1 |
| 12 | AIR VENT | 26717-006 | 1 | 29 * | BRG HOUSING O-RING | 25154-363 | 1 |
| 13 | PIPE BUSHING | AP0402 17040 | 1 | 30 | SHIPPING PLUG | 11495 15079 | 2 |
| 14 | PIPE PLUG | P06 17090 | 2 | 31 | ROT ASSY ADJ SHIM SET | 48261-058 | 4 |
| 15 | BRG CVTY DRAIN PLUG | P04 17090 | 1 | NOT SHOWN: | | | |
| 15A | SEAL CVTY DRAIN PLUG | P04 17090 | 1 | | ROTATION DECAL | 2613M | 1 |
| 16 * | OIL SEAL | 25258-344 | 1 | | INSTRUCTION TAG | 6588U | 1 |
| 16A * | OIL SEAL | 25258-344 | 1 | | | | |

* INDICATES PARTS RECOMMENDED FOR STOCK

☞ IF YOUR PUMP WAS NOT EQUIPPED FROM THE FACTORY WITH A SHAFT SLEEVE O-RING, ORDER AN O-RING (ITEM 27) WHEN REPLACING THE SHAFT SLEEVE.