

ILLUSTRATION

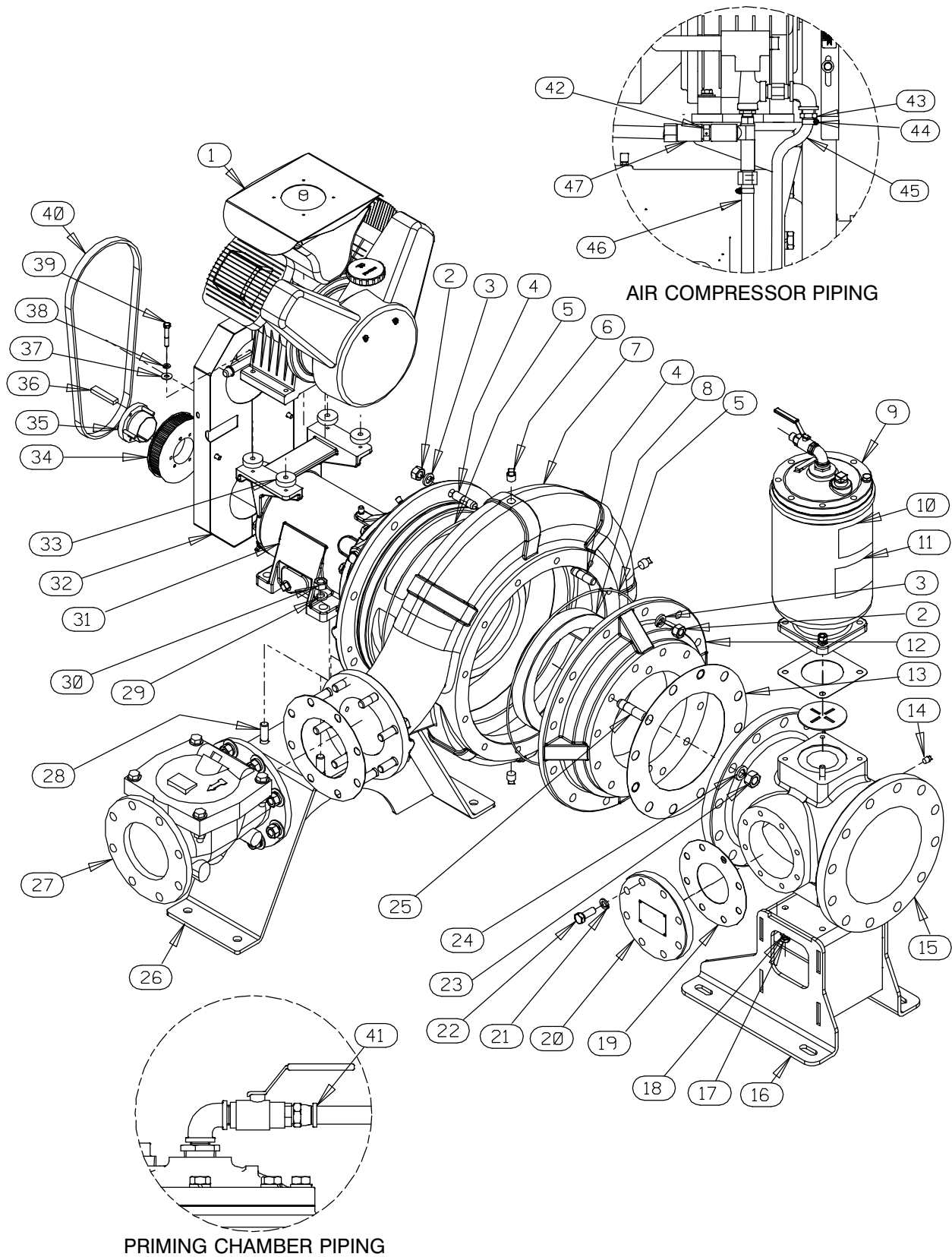


Figure 1. Pump Model PAH6A65C-B

PARTS LIST
Pump Model PAH6A65C-B
(From S/N 1619354 Up)

ITEM NO.	PART NAME	PART NUMBER	QTY	ITEM NO.	PART NAME	PART NUMBER	QTY
1	AIR COMPRESSOR ASSY	46181-915	1	*	--COVER GASKET	26688-002	1
2	HEX NUT	D12 17090	20	*	-FLANGE GASKET	1679G 19140	1
3	LOCK WASHER	J12 17090	20	28	HEX HEAD CAP SCREW	B1210 15991	4
☞ 4	STUD	C1211 1706G	20	29	LOCK WASHER	J12 15991	4
5 *	O-RING	25154-387	2	30	HEX NUT	D12 15991	4
☞ 6	PIPE PLUG	P08 17090	3	31	REPAIR ROTATING ASSY	44163-666	1
☞ 7	PUMP CASING	SEE NOTE BELOW	1	32	COMPRESS GUARD ASSY	42351-527	1
☞ 8 *	WEAR RING	38691-373 1718H	1	33	SPACER	31141-036 15000	4
9	PRIMING HOPPER KIT	48275-008	1	34	SPROCKET	24271-008	1
10	G-R DECAL	GR-06	1	35	BUSHING SK 2-1/2	24131-564	1
11	PRIME AIRE PLUS DECAL	38812-099	1	36 *	KEY	24113-605	1
12	SUCTION HEAD	38246-626 17180	1	37	FLAT WASHER	K06 15991	4
13 *	GASKET	2751GA 19410	1	38	LOCK WASHER	J06 15991	4
☞ 14	PIPE PLUG	P04 17090	2	39	HEX HEAD CAP SCREW	B0609 15991	4
15	10 X 10 SUCTION SPOOL	38644-816 17180	1	40 *	SYNCHRONOUS BELT	24186-014	1
16	BRACKET ASSEMBLY	41888-402 24150	1	41	HOSE ASSEMBLY	26564-014	1
17	HEX HEAD CAP SCREW	B0805-1/2 15991	4	42	1/2" CHECK VALVE	26641-091	1
18	LOCK WASHER	J08 15991	4	43	3/8 BARB X 1/2 NPT FTG	26523-387	1
19 *	GASKET	1676G 19410	1	44	HOSE CLAMP	26518-642	1
20	4" BLIND FLANGE ASSY	42111-434	1	45	3/8" ID X 17" LG HOSE	18513-302	1
	-WARNING PLATE	2613EV 17090	1	46	HOSE ASSEMBLY	26564-015	1
	-DRIVE SCREW	BM#04-03 17090	4	47	PIPE CPLG 1/2	AE08 17040	1
21	LOCK WASHER	J10 17090	8	NOT SHOWN:			
22	HEX HEAD CAP SCREW	B1007 17090	8		ROTATION DECAL	2613M	1
23	HEX NUT	D14 17090	12		SUCTION STICKER	6588AG	1
24	LOCK WASHER	J14 17090	12		DISCHARGE STICKER	6588BJ	1
25	STUD	C1414 1706G	12		WARNING DECAL	2613FE	1
26	STAND ASSEMBLY	41321-530 24150	1		INSTRUCTION TAG	38817-104	1
27	CHECK VALVE KIT 6"	48274-023	1		DRIVE SCREW	BM#04-03 17000	4
	-CHECK VALVE	26642-302	1		NAMEPLATE BLANK	38819-002 13000	1
	* --FLAPPER	26688-020	1				

* INDICATES PARTS RECOMMENDED FOR STOCK

☞ INCLUDED WITH REPAIR 46474-914 1
PUMP CASING ASSY

ILLUSTRATION

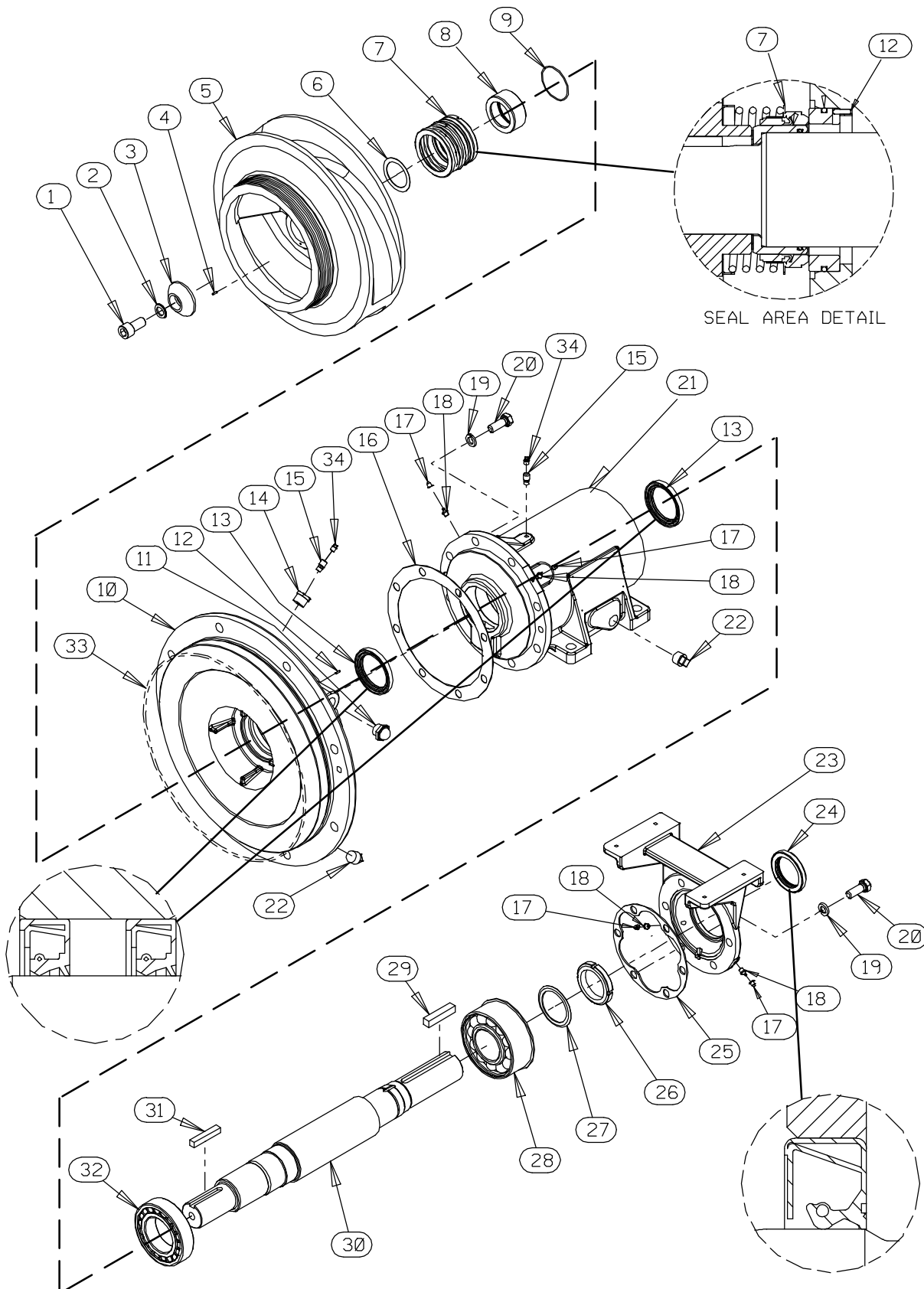


Figure 2. Repair Rotating Assembly

PARTS LIST
Repair Rotating Assembly

ITEM NO.	PART NAME	PART NUMBER	QTY
1	SOCKET HEAD CAP SCREW	21472-501	1
2	WASHER NORD-LOCK 3/4" SST	21177-254	1
3	IMPELLER WASHER	31167-042 17090	1
4	ROLL PIN	21154-801	1
5	* IMPELLER	38621-734 1718H	1
6	* SHIM SET	48261-033	1
7	* 3.25" MECH SEAL	25285-822	1
8	* SHAFT SLEEVE	31163-022 1706H	1
9	* O-RING	25154-150	1
10	SEAL PLATE	38272-272 1718H	1
11	SIGHT GAUGE	S1471	2
12	ROLL PIN	S2197	1
13	* LIP SEAL	25227-856	2
14	REDUCER PIPE BUSHING	AP1202 15079	1
15	AIR VENT	S1530	2
16	* GASKET	38683-665 19370	1
17	CAP PLUG	25141-151	4
18	LUBE FITTING	S186	4
19	LOCK WASHER	J10 17090	14
20	HEX HEAD CAP SCREW	B1007 17090	14
21	PEDESTAL	38257-211 10000	1
22	PIPE PLUG	P12 15079	3
23	BEARING CAP	38322-450 11010	1
24	* OIL SEAL	25258-845	1
25	* BEARING CAP GASKET	38683-664 19060	1
26	BEARING LOCKNUT	23962-015	1
27	LOCKING TAB COLLAR	23962-515	1
28	* BEARING	23422-417	1
29	* KEY	N1012 15990	1
30	* IMPELLER SHAFT	38512-542 1706X	1
31	* KEY	N0812 17040	1
32	* ROLLER BEARING	23535-001	1
33	* O-RING	25154-387	1
34	SHIPPING PLUG	11495C 15079	2
NOT SHOWN:			
	INSTRUCTION TAG	6588U	1
	LUBRICATION DECAL	38817-103	1

* INDICATES PARTS RECOMMENDED FOR STOCK

ILLUSTRATION

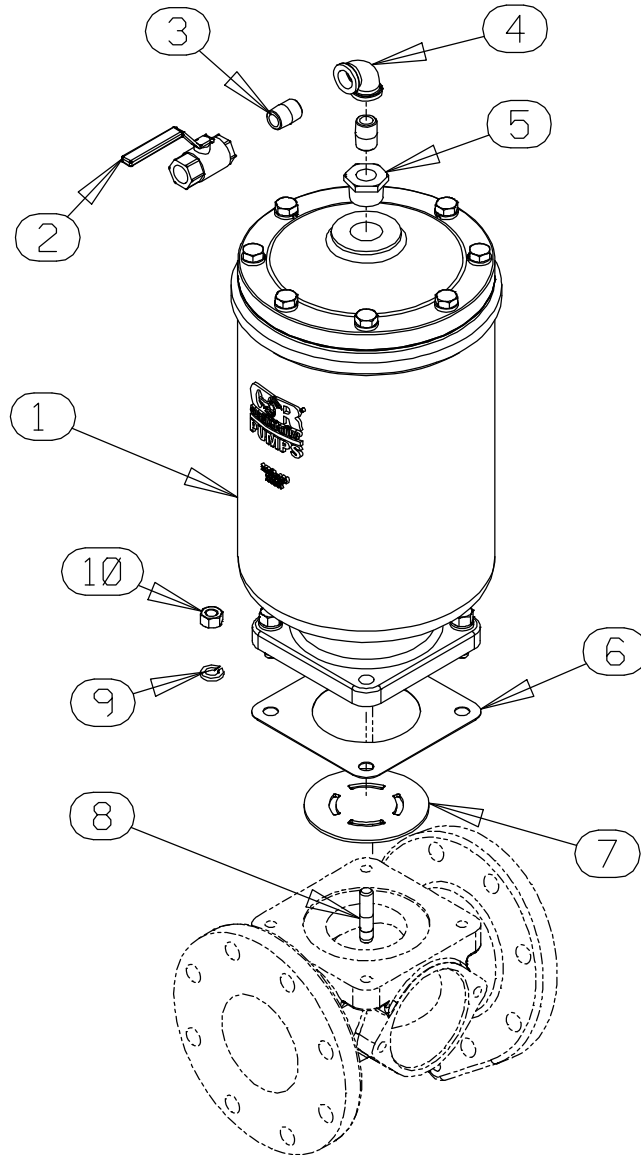


Figure 3. Priming Chamber Kit
PARTS LIST

ITEM NO.	PART NAME	PART NUMBER	QTY
1	PRIMING CHAMBER ASSEMBLY	46112-711	1
2	BALL VALVE	26631-114	1
3	CLOSE PIPE NIPPLE	T08 17040	2
4	PIPE ELBOW	R08 17040	1
5	REDUCER PIPE BUSHING	AP1608 17040	1
6	* GASKET	38687-053 19410	1
7	BAFFLE	31113-011 17040	1
8	STUD	C0809 1706G	4
9	LOCK WASHER	J08 17090	4
10	HEX NUT	D08 17040	4

* INDICATES PARTS RECOMMENDED FOR STOCK

ILLUSTRATION

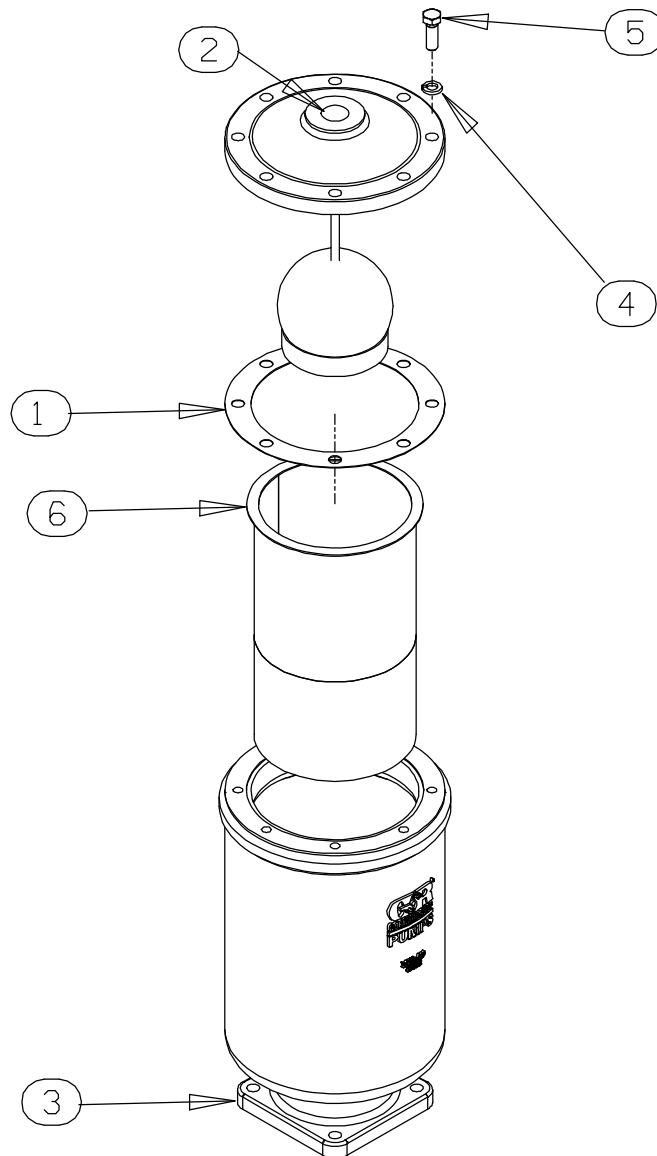


Figure 4. Priming Chamber Assembly

PARTS LIST

ITEM NO.	PART NAME	PART NUMBER	QTY
1	* PRIMING VALVE GASKET	38683-657 19410	1
2	PRIMING VALVE	26664-008	1
	-ORIFICE BUTTON	26688-021	1
3	PRIMING CHAMBER	38343-020 17040	1
4	LOCK WASHER	J08 17090	8
5	HEX HEAD CAP SCREW	B0806 17090	8
6	STRAINER ASSEMBLY	46641-024 17040	1

* INDICATES PARTS RECOMMENDED FOR STOCK