

ILLUSTRATION

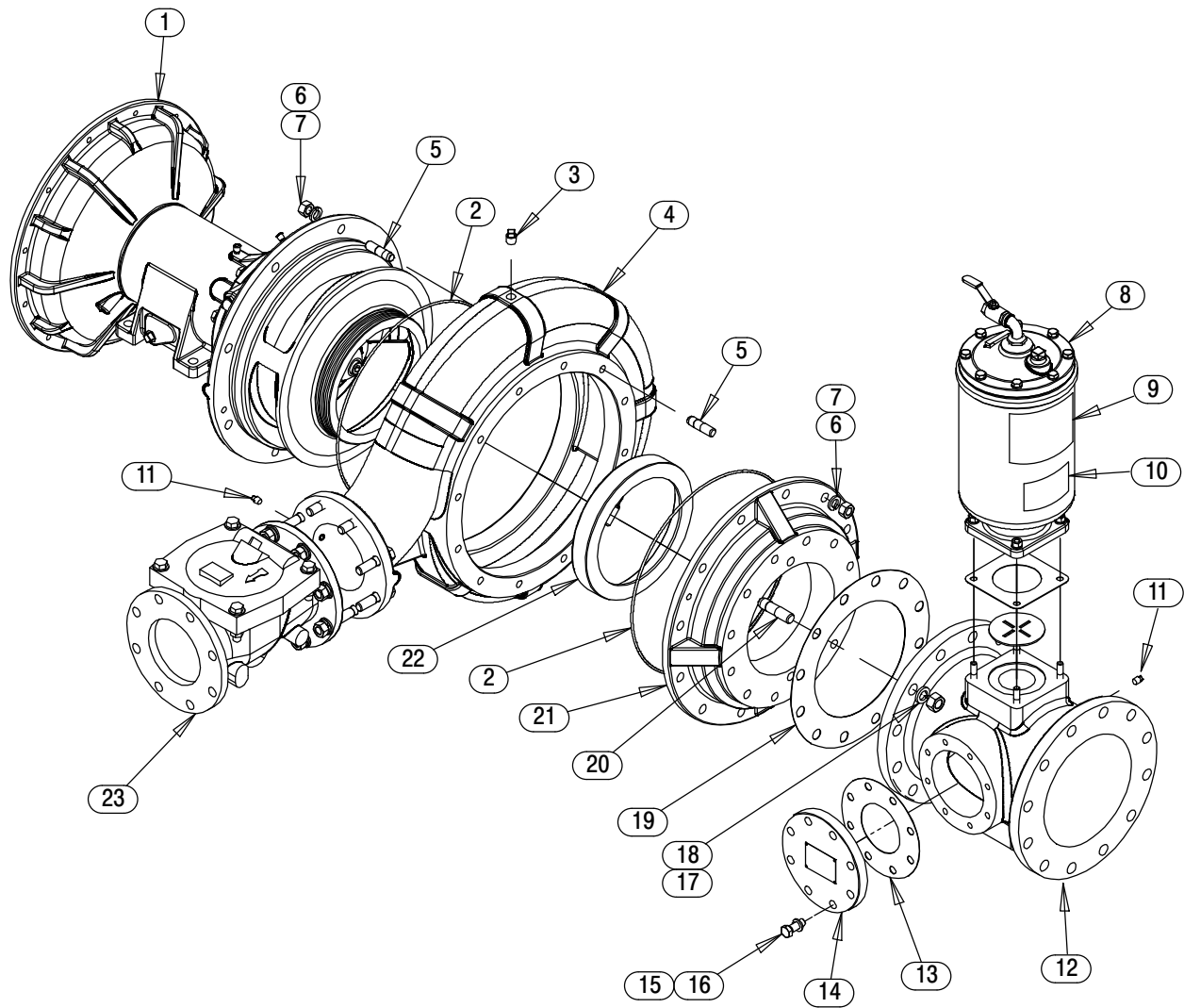


Figure 4. Pump End Assembly

Pump End Assembly

PARTS LIST

ITEM NO.	PART NAME	PART NUMBER	QTY
1	REPAIR ROTATING ASSEMBLY	44163-654	1
2	* O-RING	25152-387	2
3	☞ PIPE PLUG	P08 15079	3
4	☞ PUMP CASING	SEE NOTE BELOW	1
5	☞ STUD	C1211 15991	20
6	LOCK WASHER	J12 15991	20
7	HEX NUT	D12 15991	20
8	PRIMING CHAMBER KIT	48275-005	1
9	G-R DECAL	GR-06	1
10	PRIME AIRE PLUS DECAL	38812-099	1
11	PIPE PLUG	P04 15079	2
12	10 X 10 SUCTION SPOOL	38644-816 10000	1
13	* GASKET	25113-034	1
14	4" BLIND FLANGE ASSEMBLY	42111-358	1
15	LOCK WASHER	J10 15991	8
16	HEX HEAD CAP SCREW	B1007 15991	8
17	HEX NUT	D14 15991	12
18	LOCK WASHER	J14 15991	12
19	* GASKET 10"	25113-040	1
20	STUD	C1414 15991	12
21	SUCTION HEAD	38246-626 10000	1
22	WEAR RING	38691-373 11010	1
23	CHECK VALVE KIT 6"	48274-005	1
	-CHECK VALVE	26642-134	1
	* -FLAPPER	26688-001	1
	* -O-RING	25152-377	1
	-HEX NUT	D12 15991	8
	-LOCK WASHER	J12 15991	8
	-WASHER SAE 3/4	21161-446	8
	-STUD	C1210 15991	2
	-HEX HEAD CAP SCREW	B1213 15991	6
	* -GASKET	25113-036	1
NOT SHOWN:	DRIVE ASSEMBLY	44162-174	1
	NAMEPLATE BLANK	38819-002 13000	1
	DRIVE SCREW	BM#04-03 17000	4
	SUCTION STICKER	6588AG	1
	DISCHARGE STICKER	6588BJ	1
	WARNING DECAL	2613FE	1
	INSTRUCTION TAG	38817-104	1
☞	INCLUDED W/REPAIR PUMP CASING ASSY	46471-362	1

* INDICATES PARTS RECOMMENDED FOR STOCK

ILLUSTRATION

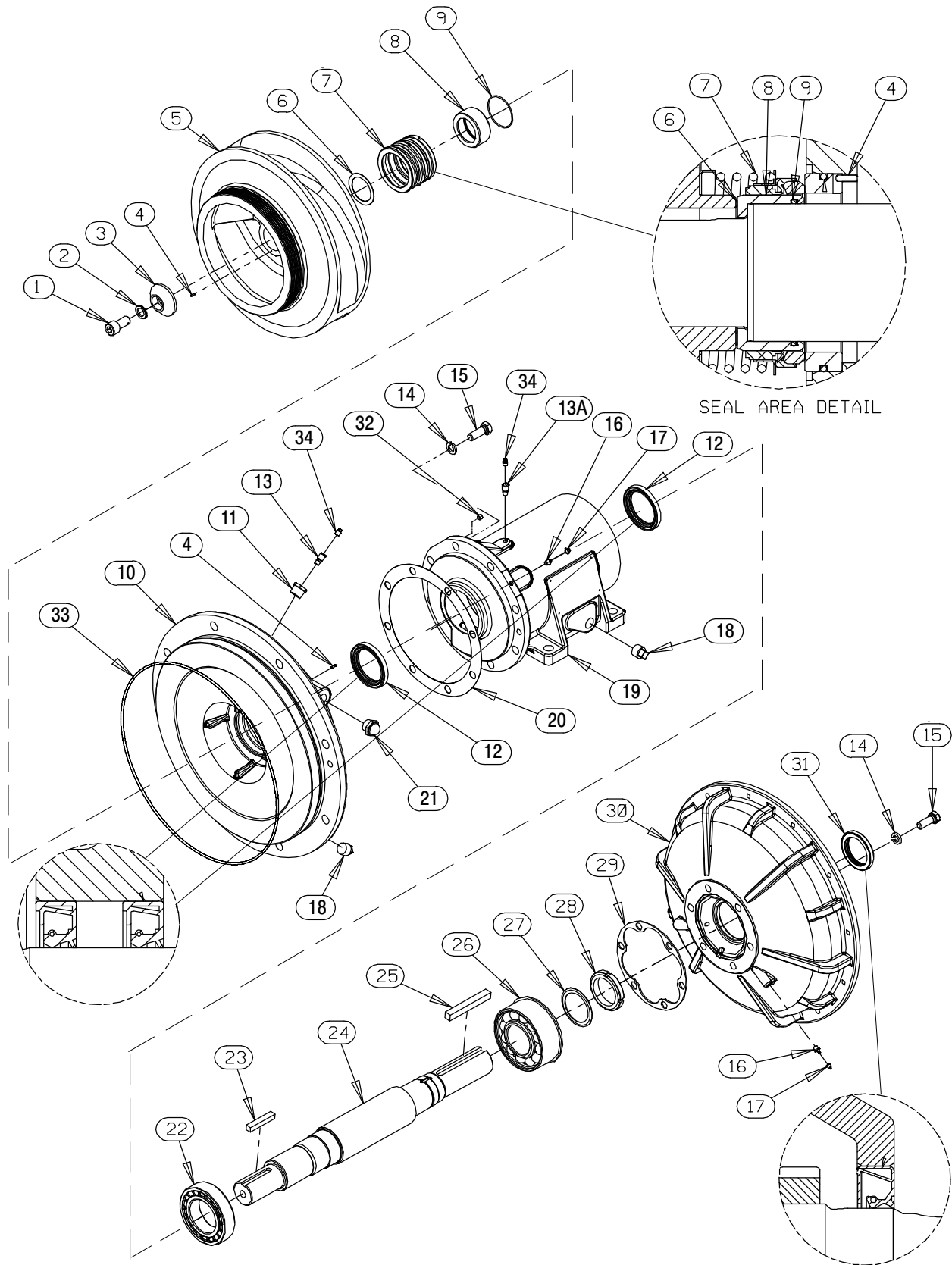


Figure 5. Repair Rotating Assembly

PARTS LIST
Repair Rotating Assembly

ITEM NO.	PART NAME	PART NUMBER	QTY
1	SOCKET HEAD CAP SCREW	DM1206 15991	1
2	WASHER NORD-LOCK 3/4"	21177-224	1
3	IMPELLER WASHER	31167-042 17000	1
4	ROLL PIN	S2197	2
5	IMPELLER	38621-734 11010	1
6	SHIM SET	48261-033	1
7	* MECH SEAL	25285-822	1
8	* SHAFT SLEEVE	31163-022 17000	1
9	* O-RING	25152-150	1
10	SEAL PLATE	38272-272 10000	1
11	REDUCER PIPE BUSHING	AP1202 15079	1
12	* LIP SEAL	25227-856	2
13	AIR VENT	S1530	1
13A	AIR VENT	S1530	1
14	LOCK WASHER	J10 15991	14
15	HEX HEAD CAP SCREW	B1007 15991	14
16	LUBE FITTING	S186	4
17	CAP PLUG	25141-151	4
18	PIPE PLUG	P12 15079	3
19	PEDESTAL	38257-212 10000	1
20	GASKET	38683-665 19370	1
21	SIGHT GAUGE	S1471	2
22	* ROLLER BEARING	23535-001	1
23	* IMPELLER KEY	N0812 15990	1
24	IMPELLER SHAFT	38512-542 1600X	1
25	* DRIVE KEY	N1020 15990	1
26	* BEARING	23422-417	1
27	LOCKING TAB COLLAR	23962-515	1
28	BEARING LOCKNUT	23962-015	1
29	* BEARING CAP GASKET	38683-664 19060	1
30	DRIVE FLANGE - SAE 1	38545-029 10000	1
31	* OIL SEAL	25258-845	1
32	SOCKET HEAD PIPE PLUG	PC02 15079	2
33	O-RING	25152-387	1
34	SHIPPING PLUG	11495C 15079	2
NOT SHOWN:			
	INSTRUCTION TAG	6588U	1

* INDICATES PARTS RECOMMENDED FOR STOCK

ILLUSTRATION

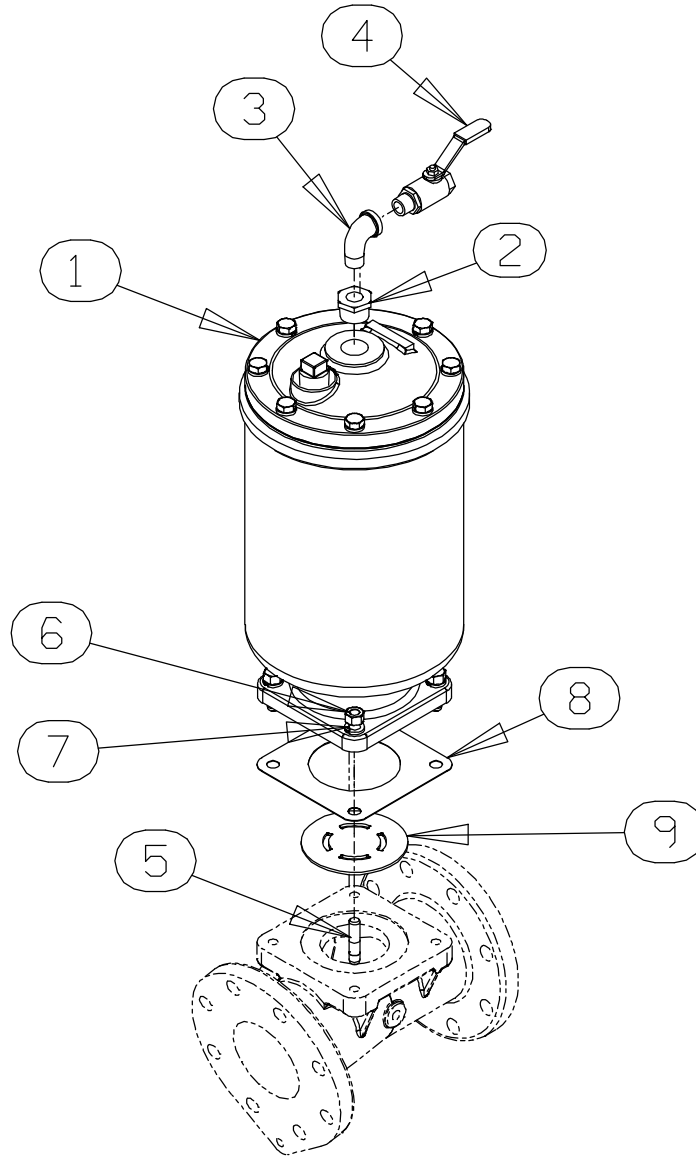


Figure 6. Priming Chamber Kit

PARTS LIST

ITEM NO.	PART NAME	PART NUMBER	QTY
1	PRIMING CHAMBER ASSY	46112-709	1
2	PIPE BUSHING	AP1608 15070	1
3	STREET ELBOW	RS08 11999	1
4	BALL VALVE	26631-052	1
5	STUD	C0809 15991	4
6	HEX NUT	D08 15991	4
7	LOCK WASHER	J08 15991	4
8	* GASKET	38687-053 19060	1
9	BAFFLE	31113-011 17000	1

* INDICATES PARTS RECOMMENDED FOR STOCK

ILLUSTRATION

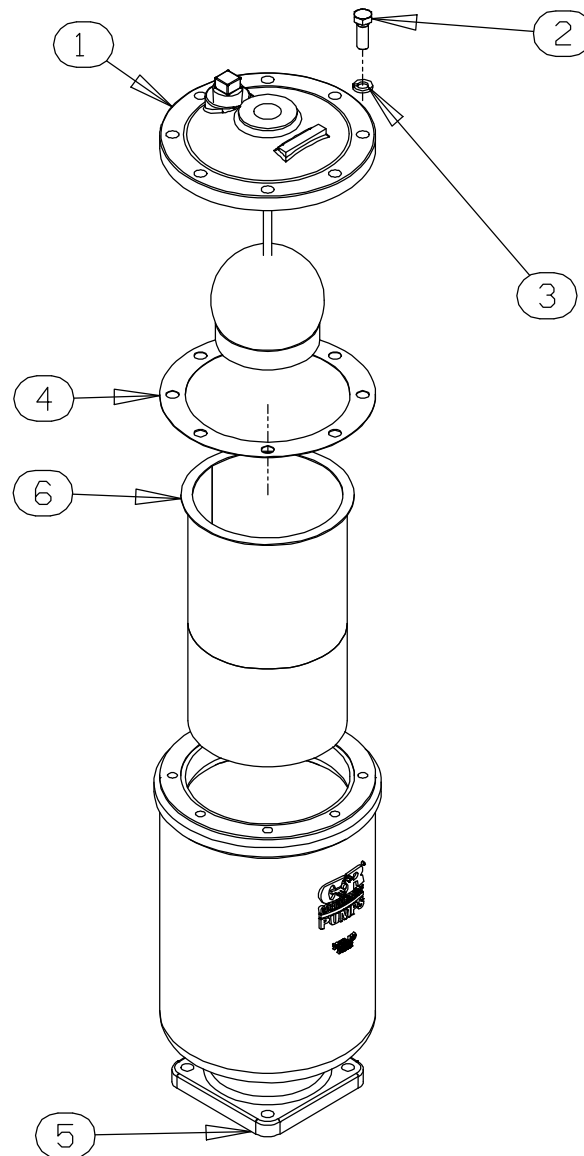


Figure 7. Priming Chamber Assembly

PARTS LIST

ITEM NO.	PART NAME	PART NUMBER	QTY
1	PRIMING VALVE	26664-007	1
	-ORIFICE BUTTON	26688-021	1
2	HEX HD CAPSCREW	B0806 15991	8
3	LOCKWASHER	J08 15991	8
4	* PRIMING VALVE GASKET	38683-657 19060	1
5	PRIMING CHAMBER	38343-020 10000	1
6	STRAINER ASSY	46641-222 17000	1

* INDICATES PARTS RECOMMENDED FOR STOCK

ILLUSTRATION

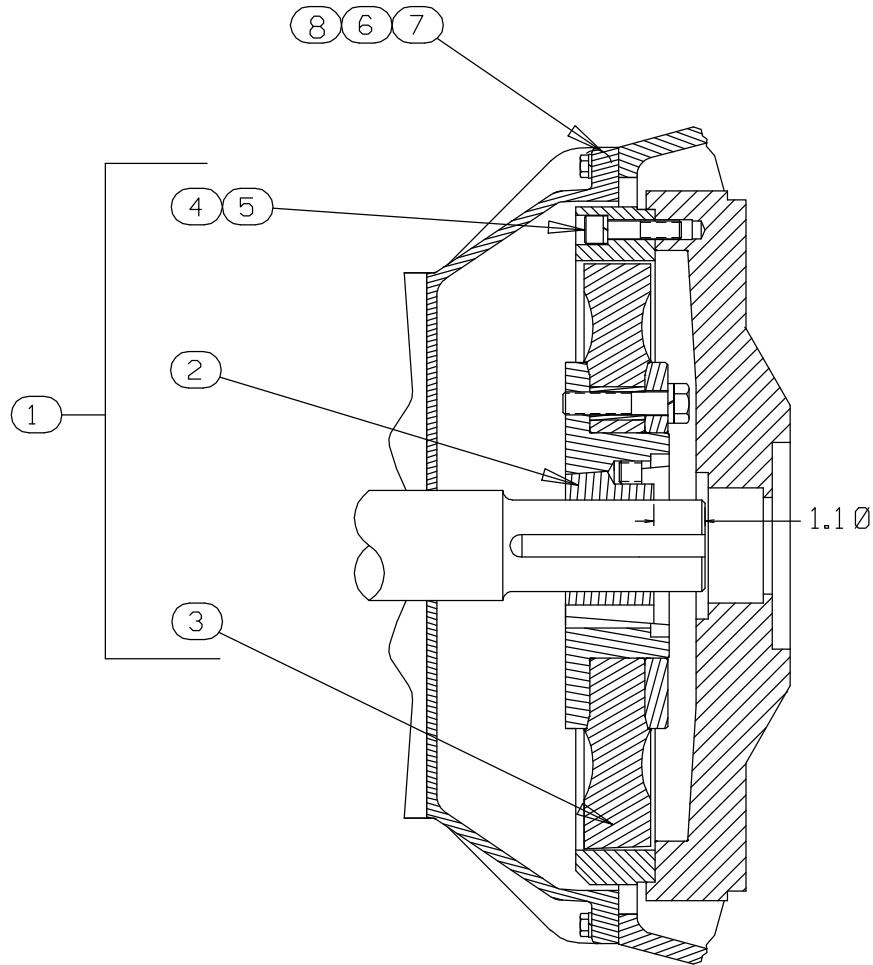


Figure 8. Drive Assembly

PARTS LIST

ITEM NO.	PART NAME	PART NUMBER	QTY
1	COUPLING KIT	48112-017	1
2	-BUSHING	24131-433	1
3	-COUPLING ASSEMBLY	24391-109	1
4	-LOCK WASHER	21171-905	8
5	☞ -SOCKET HEAD CAP SCREW	BD0810 15990	8
5	◆ -SOCKET HEAD CAP SCREW	22644-226	8
6	☞ HEX HEAD CAP SCREW	B0706 15991	12
6	◆ HEX HEAD CAP SCREW	22645-164	10
7	☞ LOCK WASHER	J07 15991	12
7	◆ LOCK WASHER	21171-511	12
8	◆ SOCKET HEAD CAP SCREW	22645-166	2

☞ USE FOR SAE APPLICATIONS

◆ USE FOR METRIC APPLICATIONS