

ILLUSTRATION

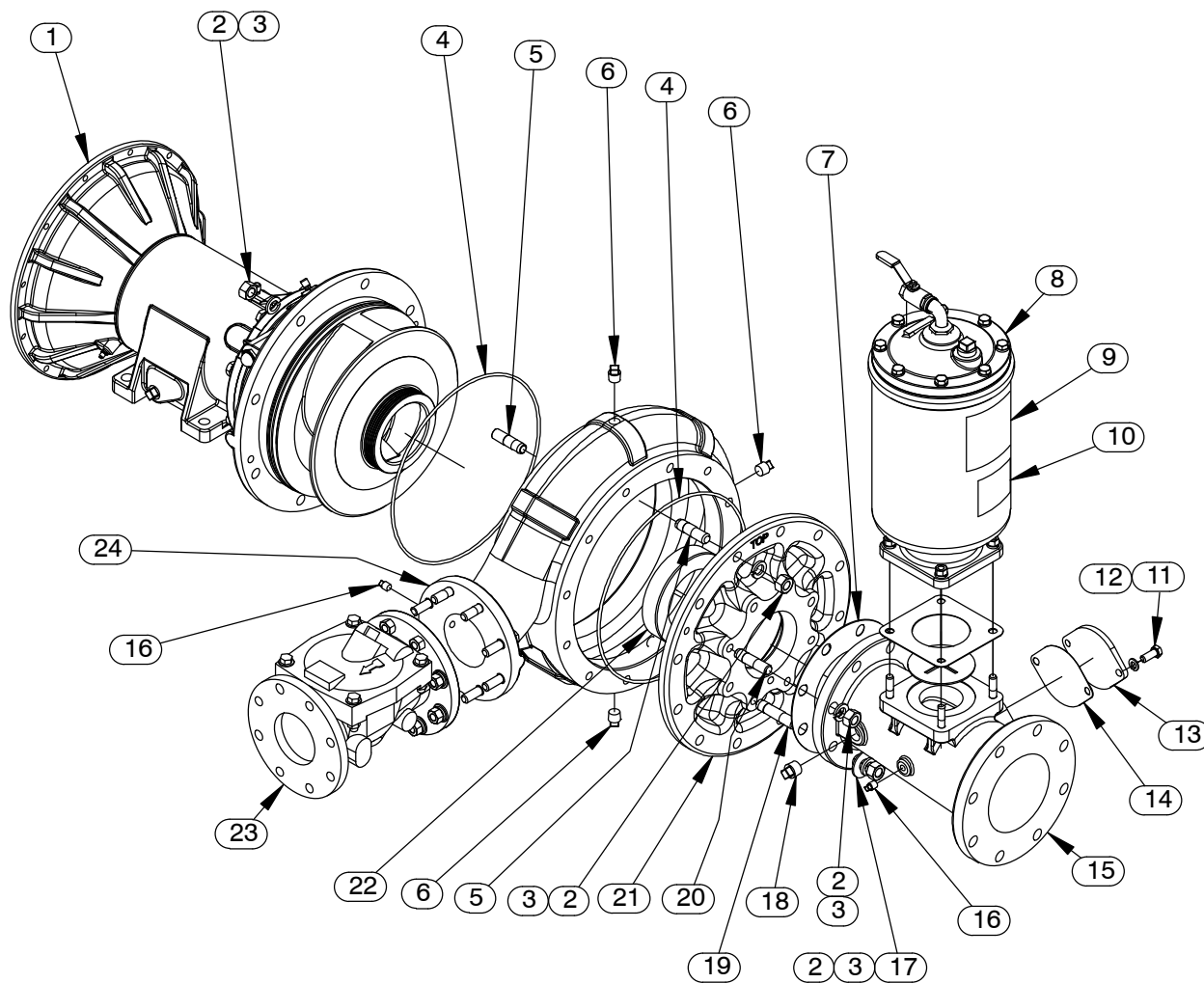


Figure 4. Pump End Assembly

Pump End Assembly

PARTS LIST

ITEM NO.	PART NAME	PART NUMBER	QTY
1	REPAIR ROTATING ASSEMBLY	44163-692	1
2	HEX NUT	D12 15991	28
3	LOCK WASHER	J12 15991	28
4	* O-RING	25152-383	2
☞ 5	STUD	C1211 15991	20
☞ 6	PIPE PLUG	P08 15079	3
7	* 5" GASKET	25113-046	1
8	PRIMING CHAMBER KIT	48275-005	1
9	G-R DECAL	GR-06	1
10	PRIME AIRE PLUS DECAL	38812-099	1
11	HEX HEAD CAP SCREW	B0805 15991	2
12	LOCK WASHER	J08 15991	2
13	COVER PLATE	38244-021 15080	1
14	* GASKET	38689-037 18000	1
15	6 X 5 SUCTION SPOOL	38642-409 10000	1
☞ 16	PIPE PLUG	P04 15079	2
17	FLAT WASHER	K12 15991	2
18	PIPE PLUG	P12 15079	1
☞ 19	STUD	C1214 15991	2
☞ 20	STUD	C1212 15991	6
21	SUCTION HEAD	38246-628 10000	1
22	* WEAR RING	38691-375 11010	1
23	CHECK VALVE KIT 4"	48274-025	1
	-FLANGE GASKET	25113-034	1
	-CHECK VALVE	26642-124	1
	* -FLAPPER	26688-005	1
	* -COVER O-RING	25152-366	1
☞ 24	PUMP CASING	SEE NOTE BELOW	1
NOT SHOWN:			
	DRIVE ASSEMBLY	44162-162	1
	SUCTION STICKER	6588AG	1
	DISCHARGE STICKER	6588BJ	1
	WARNING DECAL	2613FE	1
	INSTRUCTION TAG	38817-104	1
	NAMEPLATE BLANK	38819-002 13000	1
	DRIVE SCREW	BM#04-03 17000	4
☞	INCLUDED W/REPAIR PUMP CASING ASSY	46474-364	1

* INDICATES PARTS RECOMMENDED FOR STOCK

PARTS LIST
Repair Rotating Assembly

ITEM NO.	PART NAME	PART NUMBER	QTY
1	IMPELLER	38621-786 11010	1
2	* SHIM SET	48261-033	1
3	* 3.25" MECH SEAL	25285-822	1
4	* SHAFT SLEEVE	31163-022 17000	1
5	* O-RING	25152-150	1
6	SEAL PLATE	38272-533 10000	1
7	SIGHT GAUGE	S1471	2
8	ROLL PIN	S2197	2
9	* OIL SEAL	25227-856	2
10	REDUCER PIPE BUSHING	AP1202 15079	1
11	AIR VENT	S1530	2
12	* GASKET	38683-665 19370	1
13	SOCKET HEAD PIPE PLUG	PC02 15079	2
14	LOCK WASHER	J10 15991	14
15	HEX HEAD CAP SCREW	B1007 15991	14
16	PEDESTAL	38257-212 10000	1
17	LUBE FITTING	S186	4
18	CAP PLUG	25141-151	4
19	PIPE PLUG	P12 15079	3
20	* OIL SEAL	25258-845	1
21	DRIVE FLANGE - SAE 3	38545-030 10000	1
22	* BEARING CAP GASKET	38683-664 19060	1
23	BEARING LOCKNUT	23962-015	1
24	* LOCKING TAB COLLAR	23962-515	1
25	* BEARING	23422-417	1
26	* SHAFT KEY	N1020 15990	1
27	* IMPELLER KEY	N0806 15990	1
28	IMPELLER SHAFT	38512-545 1600X	1
29	* ROLLER BEARING	23535-001	1
30	IMPELLER WASHER	31167-042 17000	1
31	WASHER NORD-LOCK 3/4"	21177-224	1
32	SOCKET HEAD CAP SCREW	DM1206 15991	1
33	O-RING	25152-383	1
34	SHIPPING PLUG	11495C 15079	2
NOT SHOWN:			
	INSTRUCTION TAG	6588U	1
	LUBRICATION DECAL	38817-103	1

* INDICATES PARTS RECOMMENDED FOR STOCK

ILLUSTRATION

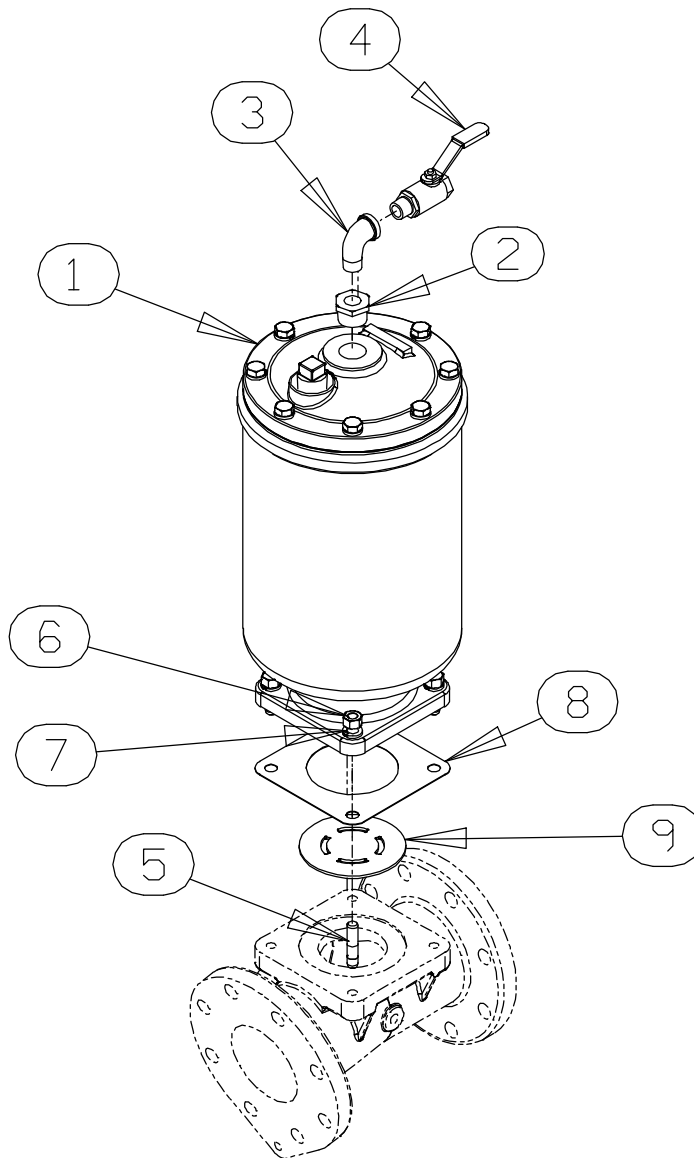


Figure 6. Priming Chamber Kit
PARTS LIST

ITEM NO.	PART NAME	PART NUMBER	QTY
1	PRIMING CHAMBER ASSY	46112-709	1
2	PIPE BUSHING	AP1608 15070	1
3	STREET ELBOW	RS08 11999	1
4	BALL VALVE	26631-052	1
5	STUD	C0809 15991	4
6	HEX NUT	D08 15991	4
7	LOCK WASHER	J08 15991	4
8	* GASKET	38687-053 19060	1
9	BAFFLE	31113-011 17000	1

* INDICATES PARTS RECOMMENDED FOR STOCK

ILLUSTRATION

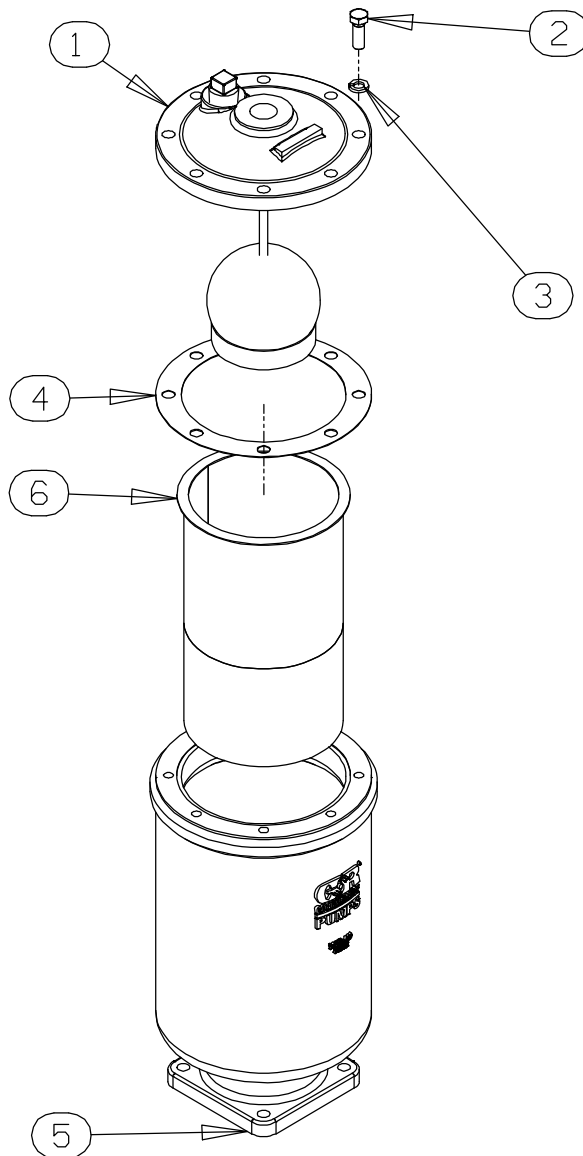


Figure 7. Priming Chamber Assembly

PARTS LIST

ITEM NO.	PART NAME	PART NUMBER	QTY
1	PRIMING VALVE	26664-007	1
	-ORIFICE BUTTON	26688-021	1
2	HEX HD CAPSCREW	B0806 15991	8
3	LOCKWASHER	J08 15991	8
4	* PRIMING VALVE GASKET	38683-657 19060	1
5	PRIMING CHAMBER	38343-020 10000	1
6	STRAINER ASSY	46641-222 17000	1

* INDICATES PARTS RECOMMENDED FOR STOCK

ILLUSTRATION

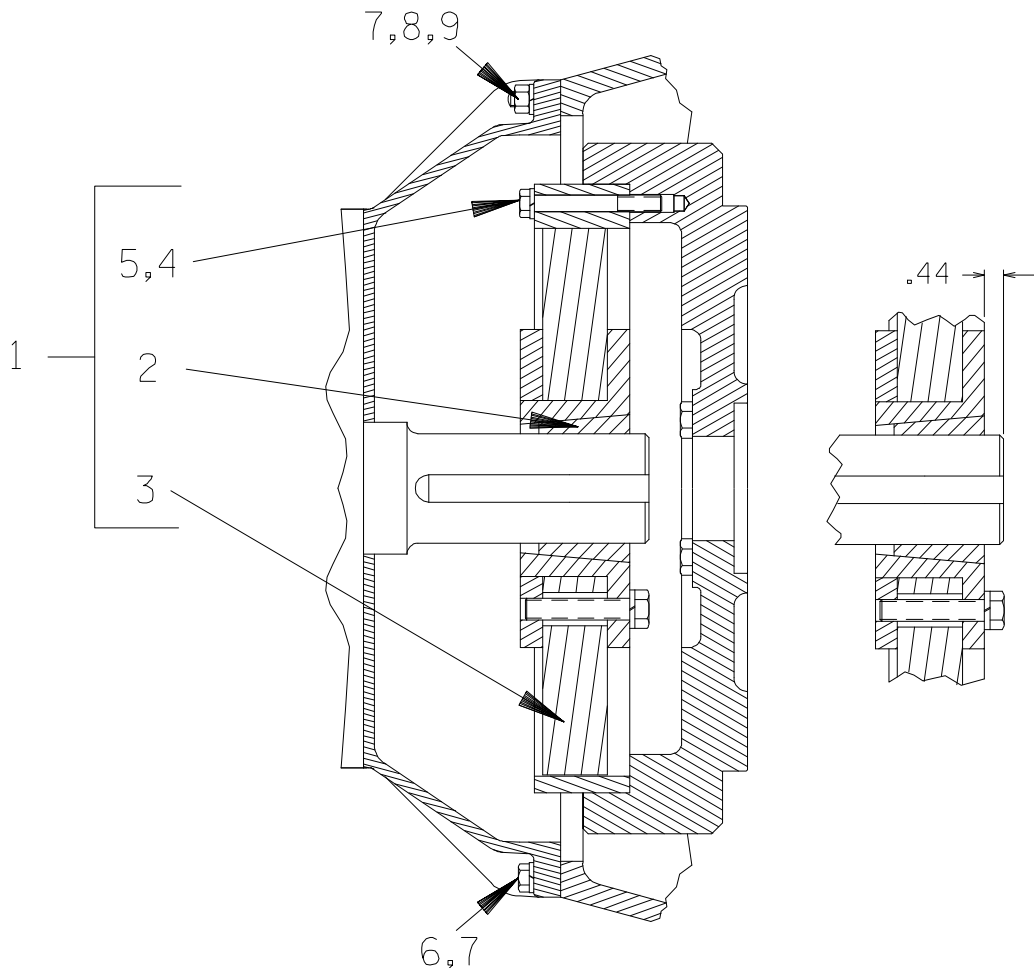


Figure 8. Drive Assembly

PARTS LIST

ITEM NO.	PART NAME	PART NUMBER	QTY
1	COUPLING KIT	48112-006	1
2	-BUSHING	24131-492	1
3	-COUPLING ASSEMBLY	24391-106	1
4	LOCKWASHER	21171-536	8
☞ 5	HEX HEAD CAPSCREW	B0612 15991	8
◆ 5	HEX HEAD CAPSCREW	22645-174	8
☞ 6	HEX HEAD CAPSCREW	B0606 15991	10
◆ 6	HEX HEAD CAPSCREW	22645-166	12
☞ 7	LOCKWASHER	J06 15991	12
◆ 7	LOCKWASHER	21171-511	12
☞ 8	STUD	C0606 15991	2
◆ 8	STUD	26821-879	2
☞ 9	HEX NUT	D06 15991	2
◆ 9	HEX NUT	26821-932	2

☞ USE FOR SAE APPLICATIONS

◆ USE FOR METRIC APPLICATIONS