

ILLUSTRATION

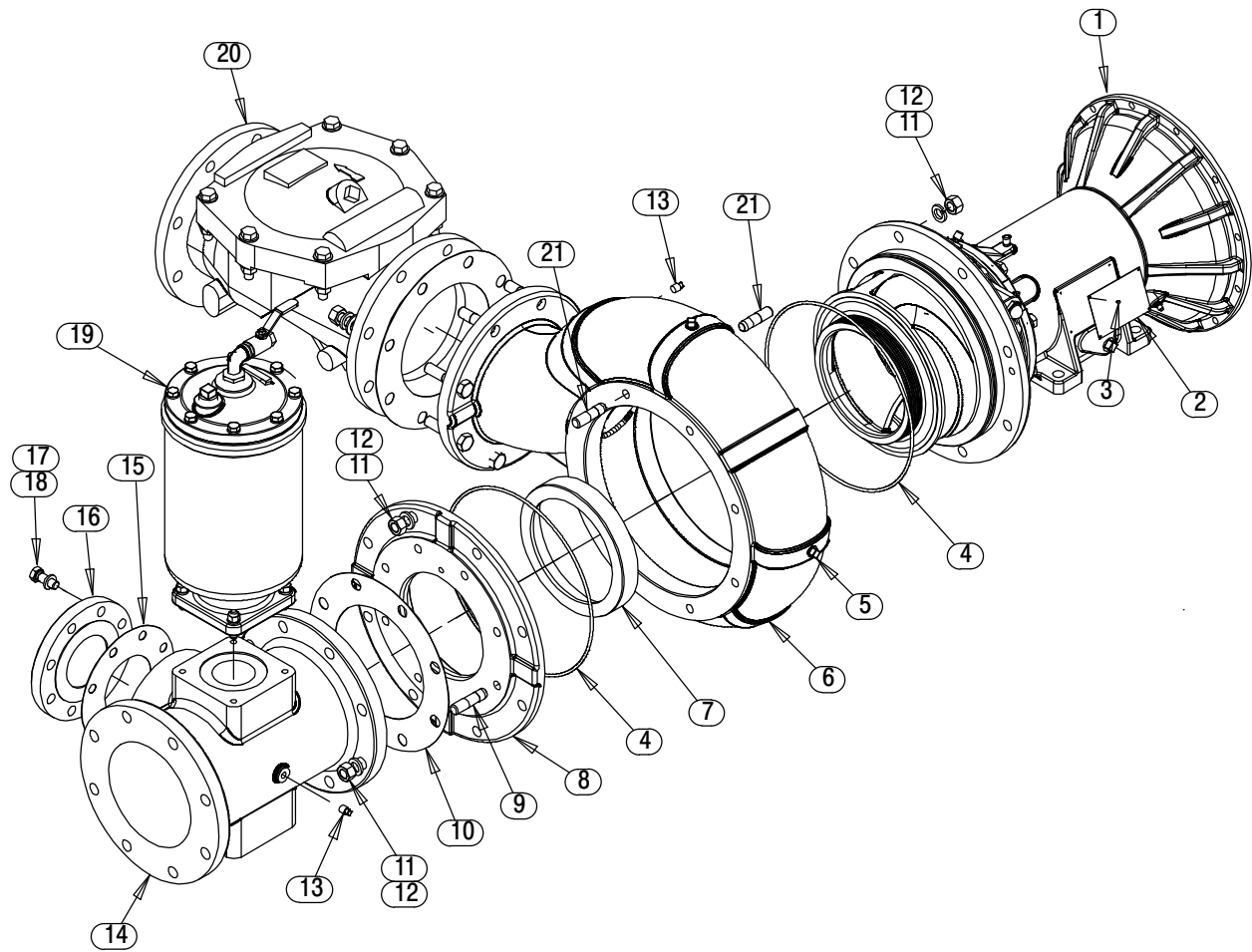


Figure 4. Pump End Assembly

## Pump End Assembly

## PARTS LIST

ITEM NO.	PART NAME	PART NUMBER	QTY
1	REPAIR ROTATING ASSEMBLY	44163-741	1
2	NAMEPLATE BLANK	38819-002 13000	1
3	DRIVE SCREW	BM#04-03 17000	4
4	* O-RING	25152-383	2
☞ 5	PIPE PLUG	P08 15079	3
☞ 6	PUMP CASING	38218-324 11010	1
7	* WEAR RING	38691-372 11010	1
8	SUCTION HEAD	38246-625 10000	1
☞ 9	STUD	C1212 15991	8
10	* GASKET	25113-038	1
11	HEX NUT	D12 15991	24
12	LOCK WASHER	J12 15991	24
☞ 13	PIPE PLUG	P04 15079	2
14	8 X 8 SUCTION SPOOL	38642-301 10000	1
15	* GASKET	25113-034	1
16	4" BLIND FLANGE ASSEMBLY	42111-358	1
17	LOCK WASHER	J10 15991	8
18	HEX HEAD CAP SCREW	B1007 15991	8
19	PRIMING CHAMBER KIT	48275-005	1
20	CHECK VALVE KIT 8"	48274-006	1
	-CHECK VALVE	26642-129	1
	-FLAPPER	26688-013	1
	-GASKET	26688-014	1
	-O-RING	25152-382	1
☞ 21	STUD	C1211 15991	16
NOT SHOWN:			
	SUCTION STICKER	6588AG	1
	DISCHARGE STICKER	6588BJ	1
	G-R DECAL 6 IN	GR-06	1
	INSTRUCTION TAG	38817-104	1
	WARNING DECAL	2613FE	1
	DRIVE ASSEMBLY	44162-162	1
	8" STRAINER ASSEMBLY	46641-010 24150	1
☞	INCLUDED W/REPAIR PUMP CASING ASSY	46474-366	1

\* INDICATES PARTS RECOMMENDED FOR STOCK

ILLUSTRATION

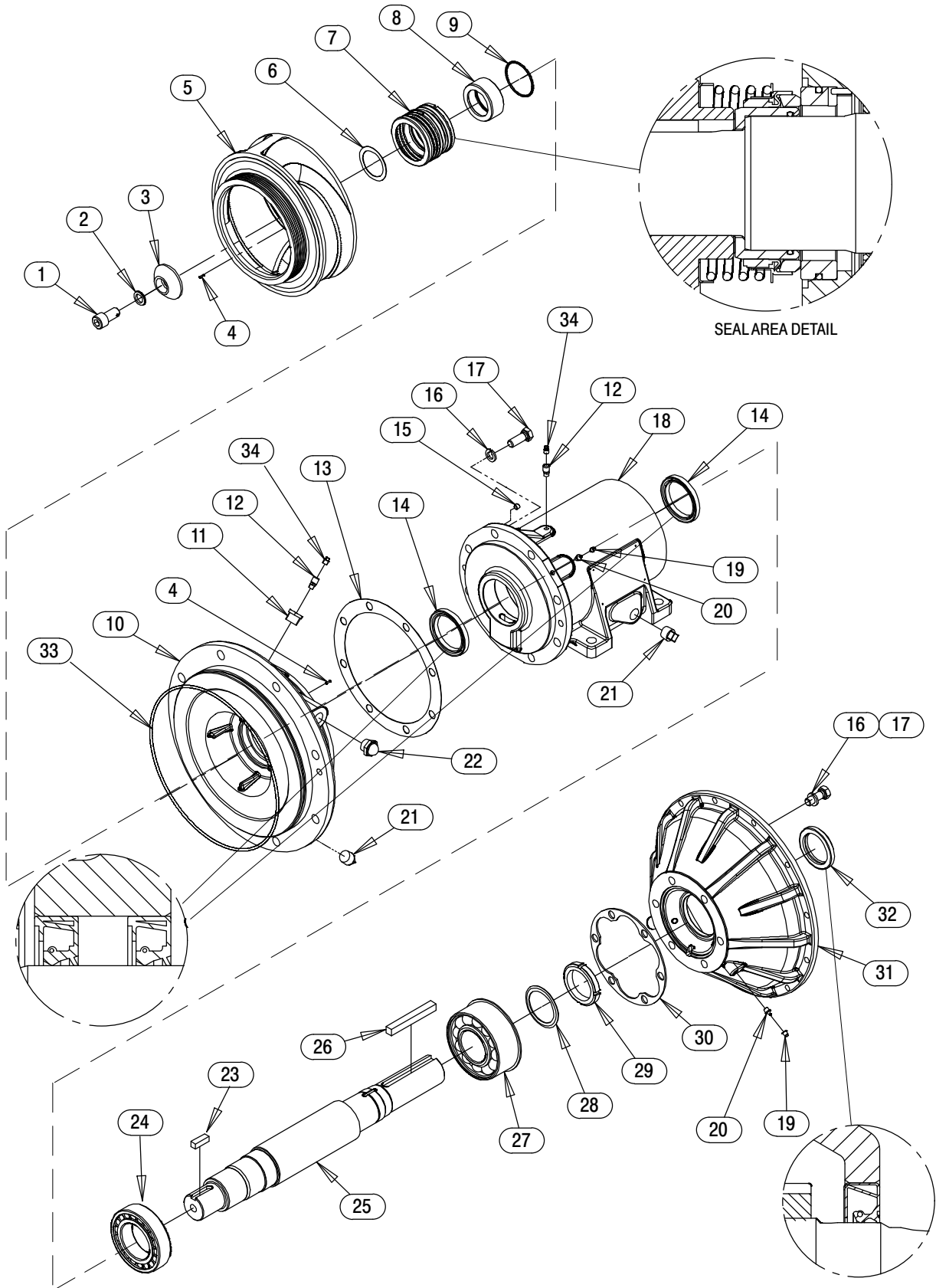


Figure 5. Repair Rotating Assembly

**PARTS LIST**  
**Repair Rotating Assembly**

ITEM NO.	PART NAME	PART NUMBER	QTY
1	SOCKET HEAD CAP SCREW	DM1206 15991	1
2	WASHER NORD-LOCK 3/4"	21177-224	1
3	IMPELLER WASHER	31167-042 17000	1
4	ROLL PIN	S2197	2
5	IMPELLER	38621-799 11010	1
6	* SHIM SET	48261-033	1
7	* 3.25" MECH SEAL	25285-822	1
8	* SHAFT SLEEVE	31163-022 17000	1
9	* O-RING	25152-150	1
10	SEAL PLATE	38272-533 10000	1
11	REDUCER PIPE BUSHING	AP1202 15079	1
12	AIR VENT	S1530	2
13	* GASKET	38683-665 19370	1
14	* LIP SEAL	25227-856	2
15	SOCKET HEAD PIPE PLUG	PC02 15079	2
16	LOCK WASHER	J10 15991	14
17	HEX HEAD CAP SCREW	B1007 15991	14
18	PEDESTAL	38257-212 10000	1
19	CAP PLUG	25141-151	4
20	LUBE FITTING	S186	4
21	PIPE PLUG	P12 15079	3
22	SIGHT GAUGE	S1471	2
23	* IMPELLER KEY	N0806 15990	1
24	* ROLLER BEARING	23535-001	1
25	IMPELLER SHAFT	38512-545 1600X	1
26	* SHAFT KEY	N1020 15990	1
27	* BEARING	23422-417	1
28	LOCKING TAB COLLAR	23962-515	1
29	BEARING LOCKNUT	23962-015	1
30	* BEARING CAP GASKET	38683-664 19060	1
31	DRIVE FLANGE - SAE 3	38545-030 10000	1
32	* OIL SEAL	25258-845	1
33	* O-RING	25152-383	1
34	SHIPPING PLUG	11495C 15079	2
NOT SHOWN:			
	INSTRUCTION TAG	6588U	1
	LUBRICATION DECAL	38817-103	1

\* INDICATES PARTS RECOMMENDED FOR STOCK

ILLUSTRATION

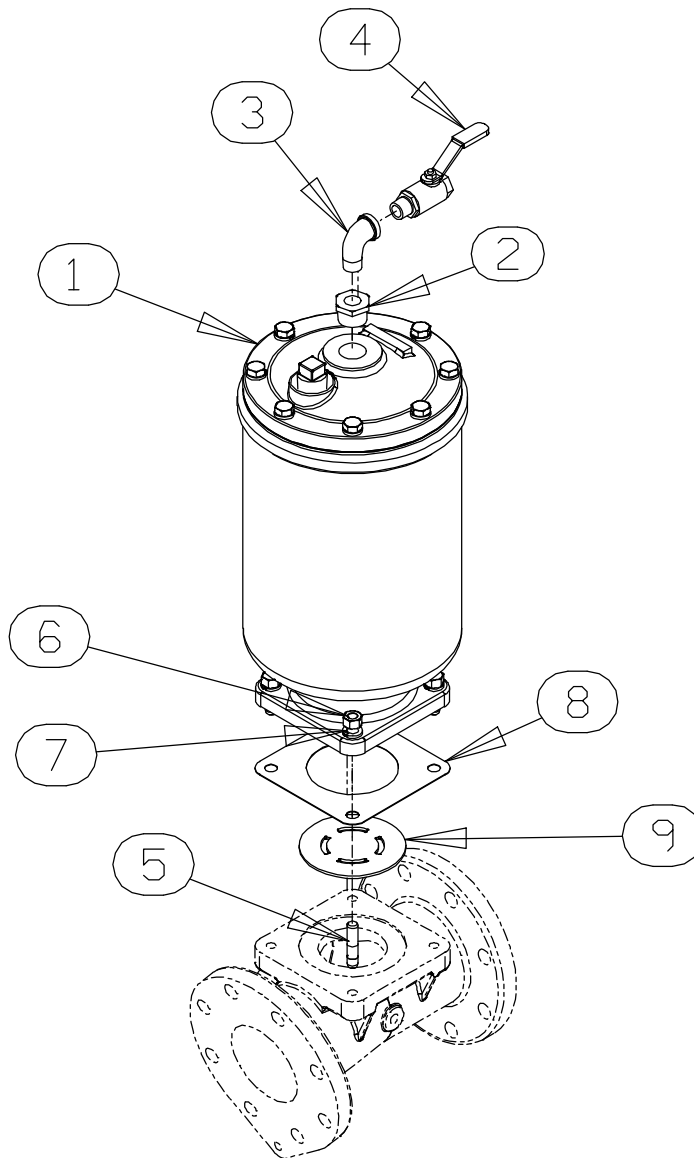


Figure 6. Priming Chamber Kit  
PARTS LIST

ITEM NO.	PART NAME	PART NUMBER	QTY
1	PRIMING CHAMBER ASSY	46112-709	1
2	PIPE BUSHING	AP1608 15070	1
3	STREET ELBOW	RS08 11999	1
4	BALL VALVE	26631-052	1
5	STUD	C0809 15991	4
6	HEX NUT	D08 15991	4
7	LOCK WASHER	J08 15991	4
8	* GASKET	38687-053 19060	1
9	BAFFLE	31113-011 17000	1

\* INDICATES PARTS RECOMMENDED FOR STOCK

ILLUSTRATION

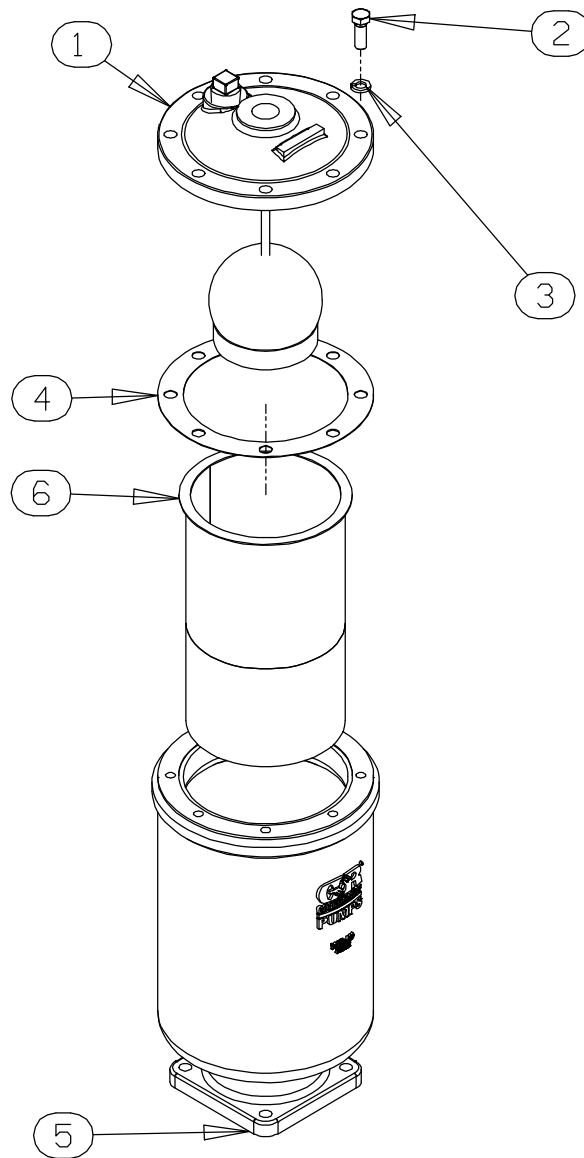


Figure 7. Priming Chamber Assembly

PARTS LIST

ITEM NO.	PART NAME	PART NUMBER	QTY
1	PRIMING VALVE	26664-007	1
	-ORIFICE BUTTON	26688-021	1
2	HEX HD CAPSCREW	B0806 15991	8
3	LOCKWASHER	J08 15991	8
4	* PRIMING VALVE GASKET	38683-657 19060	1
5	PRIMING CHAMBER	38343-020 10000	1
6	STRAINER ASSY	46641-222 17000	1

\* INDICATES PARTS RECOMMENDED FOR STOCK

ILLUSTRATION

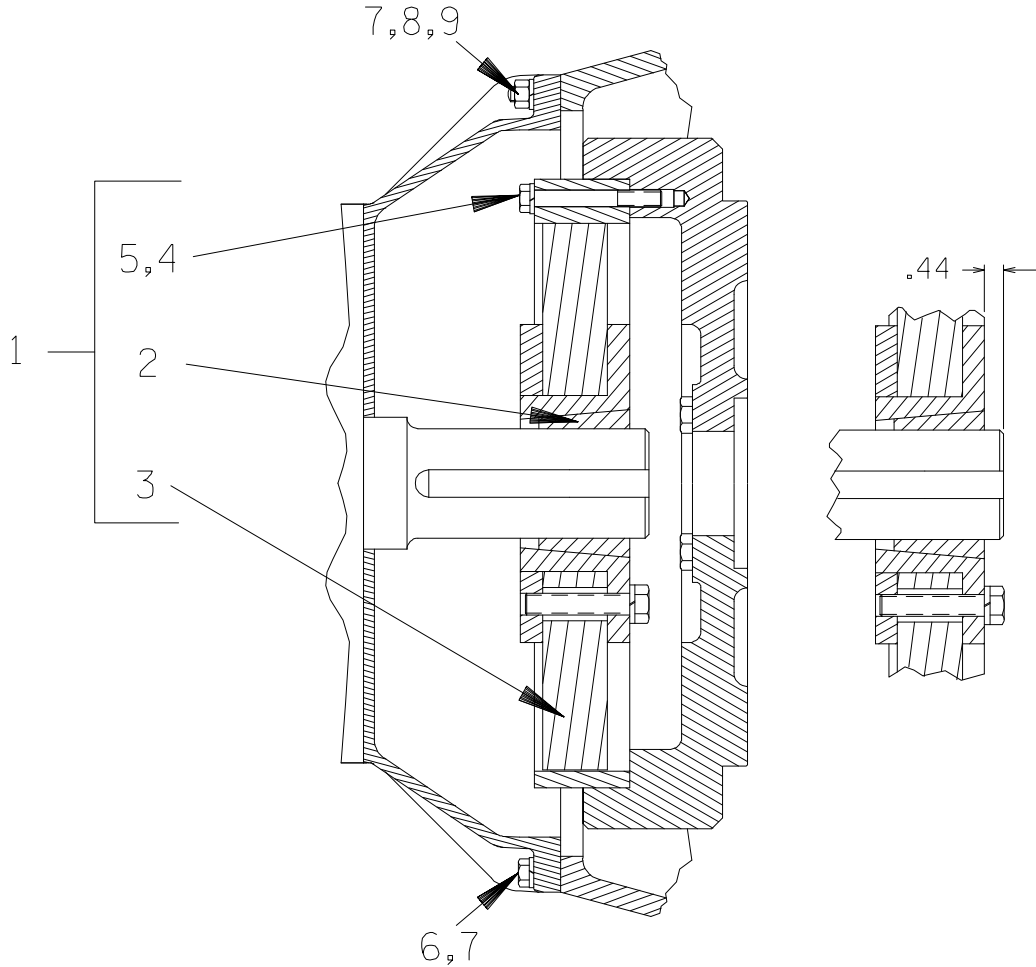


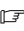









Figure 8. Drive Assembly

PARTS LIST

ITEM NO.	PART NAME	PART NUMBER	QTY
1	COUPLING KIT	48112-006	1
2	-BUSHING	24131-492	1
3	-COUPLING ASSEMBLY	24391-106	1
4	LOCKWASHER	21171-536	8
 5	HEX HEAD CAPSCREW	B0612 15991	8
 5	HEX HEAD CAPSCREW	22645-174	8
 6	HEX HEAD CAPSCREW	B0606 15991	10
 6	HEX HEAD CAPSCREW	22645-166	12
 7	LOCKWASHER	J06 15991	12
 7	LOCKWASHER	21171-511	12
 8	STUD	C0606 15991	2
 8	STUD	26821-879	2
 9	HEX NUT	D06 15991	2
 9	HEX NUT	26821-932	2

 USE FOR SAE APPLICATIONS

 USE FOR METRIC APPLICATIONS