

ILLUSTRATION

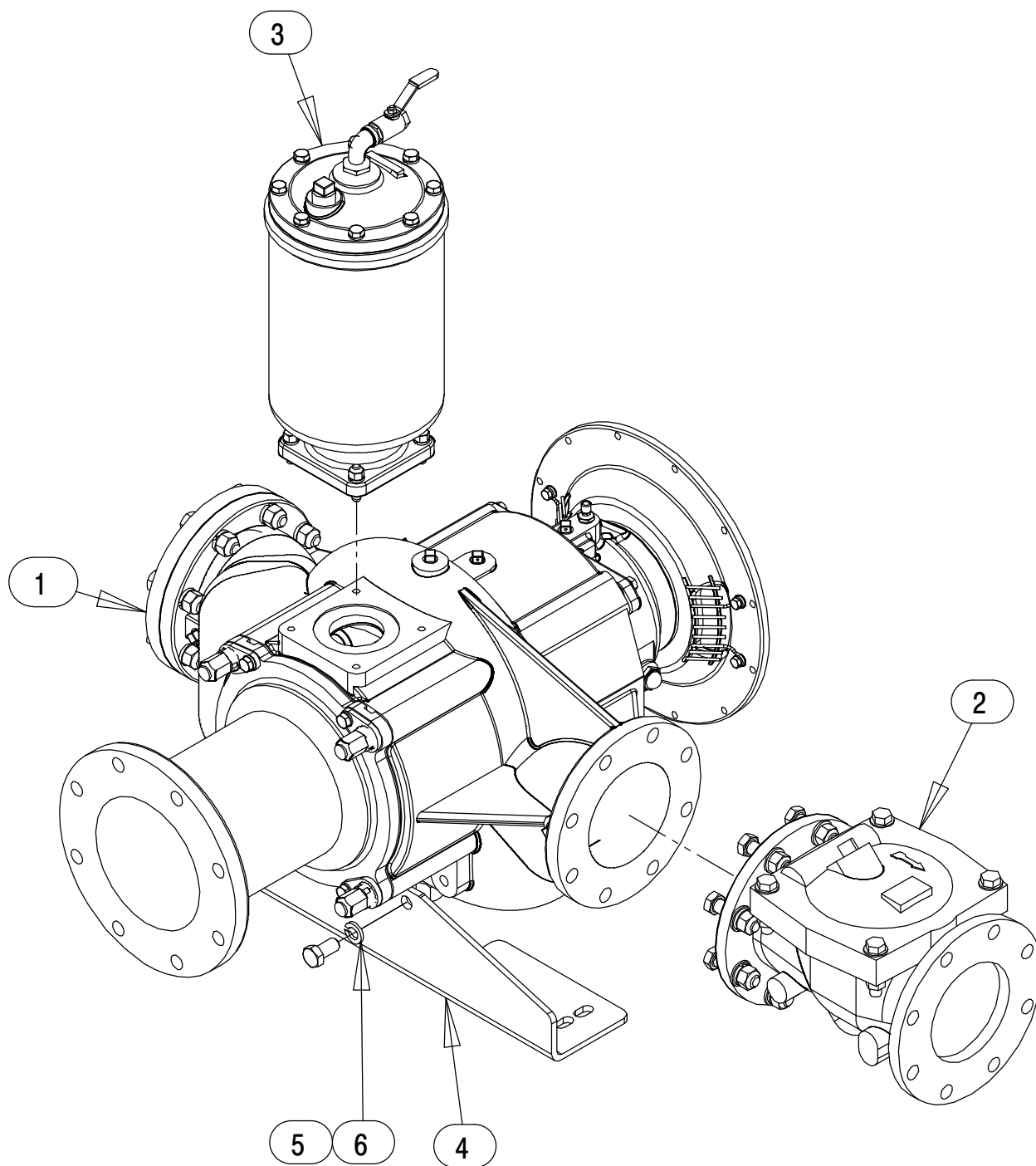


Figure 4. Pump Assembly

Pump Assembly
PARTS LIST

ITEM NO.	PART NAME	PART NUMBER	QTY
1	PUMP SUB ASSEMBLY	46133-408	1
2	CHECK VALVE KIT 6"	48274-015	1
	-CHECK VALVE	26642-126	1
	* --FLAPPER	26688-001	1
	* --COVER O-RING	25152-377	1
	* -FLANGE GASKET	25113-036	1
3	PRIMING CHAMBER KIT	48275-005	1
4	PUMP SUPPORT BRACKET	34266-047 15080	1
5	HEX HEAD CAP SCREW	B1206 15991	2
6	LOCK WASHER	J12 15991	2
NOT SHOWN:			
	SUCTION STICKER	6588AG	1
	DISCHARGE STICKER	6588BJ	1
	WARNING DECAL	2613FE	1
	G-R DECAL 6 IN	GR-06	1
	LUBRICATION DECAL	11421A	1
	INSTRUCTION TAG	38817-085	1

* INDICATES PARTS RECOMMENDED FOR STOCK

ILLUSTRATION

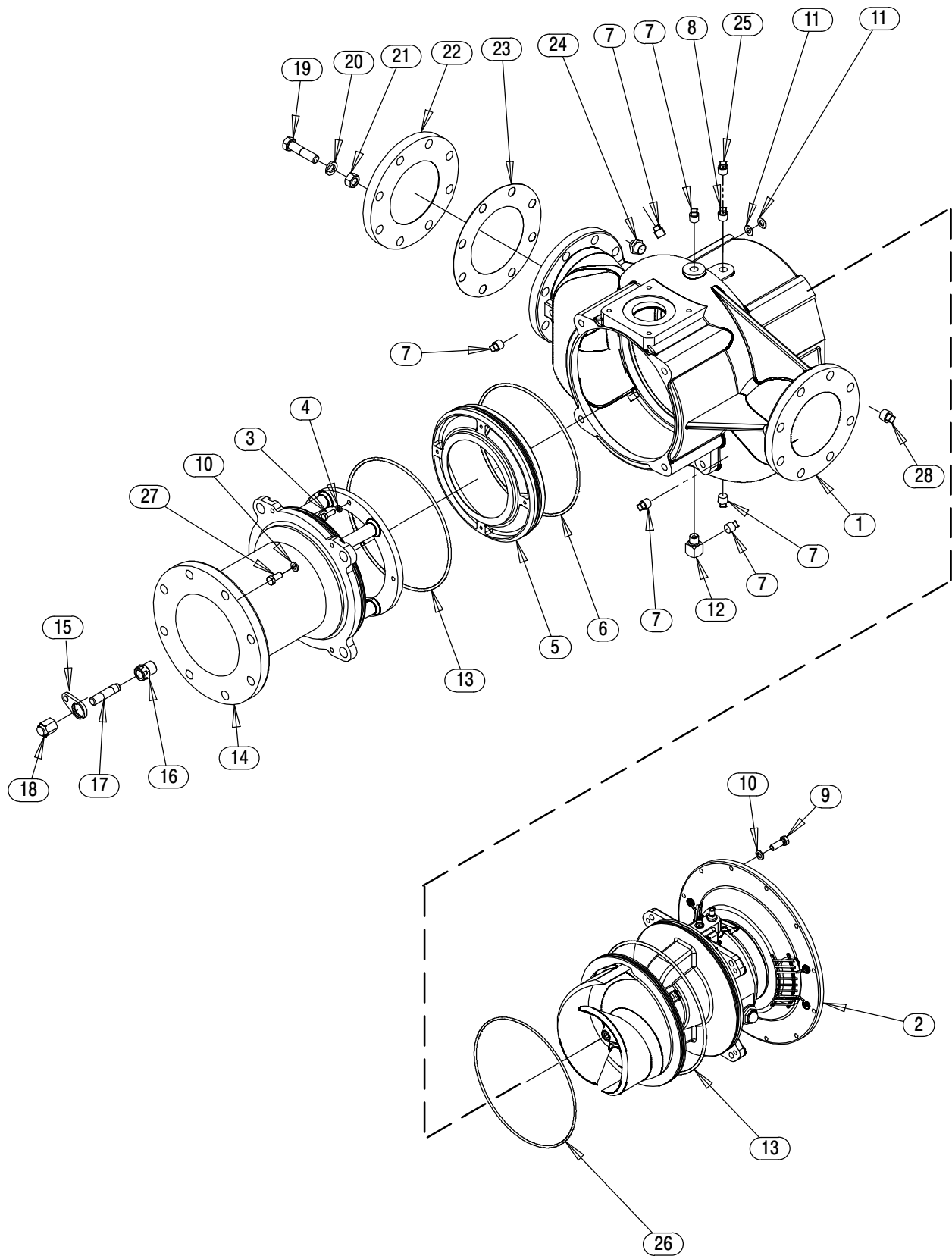


Figure 5. Pump Subassembly

PARTS LIST
Pump Subassembly

ITEM NO.	PART NAME	PART NUMBER	QTY
☞ 1	PUMP CASING	SEE NOTE BELOW	1
2	REPAIR ROTATING ASSEMBLY	44163-502	1
3	HEX HEAD CAP SCREW	B0604-1/2 17000	4
4	LOCK WASHER	J06 17090	4
5	* WEAR PLATE	38691-864 11010	1
6	* O-RING	25152-453	1
☞ 7	PIPE PLUG	P08 15079	6
8	VENTED PIPE PLUG	4823A 15079	1
9	HEX HEAD CAP SCREW	B0806 15991	4
10	LOCK WASHER	J08 15991	8
11	SHIM	13131-3 17040	8
12	STREET ELBOW	25412-004	1
13	* O-RING	S1676	2
14	BACK COVER ASSY	42111-812	1
15	LOCK COLLAR	38115-551 15001	4
16	ADJUSTING SCREW	31871-070 1500G	4
☞ 17	STUD	C1213 15991	4
18	BACK COVER NUT	31871-073 15000	4
19	HEX HEAD CAP SCREW	B1213 15991	8
20	LOCK WASHER	J12 15991	8
21	HEX NUT	D12 15991	8
22	BLIND FLANGE ASSEMBLY	42111-349	1
23	* GASKET	25113-036	1
24	SIGHT GAUGE	S1471	1
25	SHIPPING PLUG	11495B 15079	1
26	* O-RING	25152-381	1
27	HEX HEAD CAP SCREW	B0804-1/2 15991	4
28	PIPE PLUG	P12 15079	1
NOT SHOWN:			
	OIL LEVEL DECAL	38816-123	1
	DRIVE SCREW	BM#04-03 17000	4
	NAMEPLATE BLANK	38819-002 13000	1
	STRAINER	46641-010 24150	1
	DRIVE ASSY	44162-159	1
☞	INCLUDED W/REPAIR PUMP CASING ASSY	46474-903	1

* INDICATES PARTS RECOMMENDED FOR STOCK

ILLUSTRATION

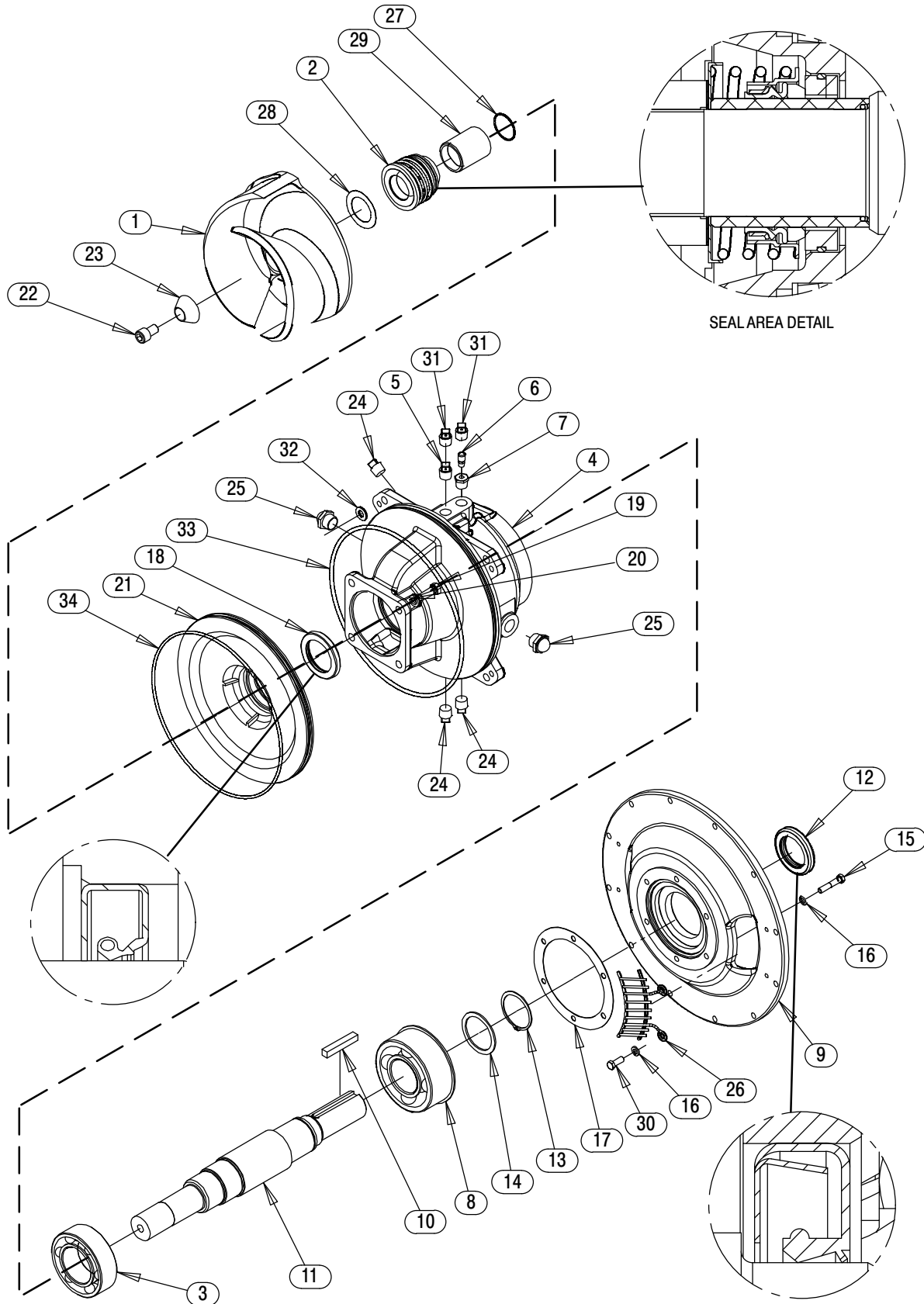


Figure 6. Repair Rotating Assembly

PARTS LIST
Repair Rotating Assembly

ITEM NO.		PART NAME	PART NUMBER	QTY
1	*	IMPELLER	38615-095 11010	1
2	*	SEAL ASSEMBLY	46512-149	1
3	*	BALL BEARING	23422-019	1
4		BEARING HOUSING	38251-513 10000	1
5		VENTED PIPE PLUG	4823A 15079	1
6		AIR VENT	S1530	1
7		REDUCER PIPE BUSHING	AP0802 15079	1
8	*	BALL BEARING	23422-414	1
9		DRIVE FLANGE	38545-020 10000	1
10	*	KEY	N0812 15990	REF
11	*	IMPELLER SHAFT	38515-592 1706H	1
12	*	OIL SEAL	S1907	1
13		RETAINING RING	S720	1
14		THRUST WASHER	31134-115 15000	1
15		HEX HEAD CAP SCREW GRADE 8	21632-938	6
16		LOCK WASHER	J06 15991	10
17		GASKET	38683-474 18000	1
18	*	OIL SEAL	25227-771	1
19		HEX HEAD CAP SCREW	B0805-1/2 15991	4
20		LOCK WASHER	J08 15991	4
21		SEAL PLATE	38272-256 10000	1
22		SOCKET HEAD CAP SCREW	DM1004S 17090	1
23		IMPELLER WASHER	31514-015 17000	1
24		PIPE PLUG	P08 15079	3
25		SIGHT GAUGE	S1471	2
26		INTERMEDIATE GUARD	42381-509 24152	2
27	*	O-RING	25154-131	REF
28	*	ADJ SHIM SET	48261-057	REF
29		SHAFT SLEEVE	31163-019 1706H	1
30		HEX HEAD CAP SCREW	B0604 15991	4
31		SHIP PLUG	11495B 15079	2
32	*	SHIM	13131-3 17040	8
33	*	O-RING	S1676	1
34	*	O-RING	25152-381	1
NOT SHOWN:				
		INSTRUCTION TAG	6588U	1
		WARNING DECAL	38817-102	1

* INDICATES PARTS RECOMMENDED FOR STOCK

ILLUSTRATION

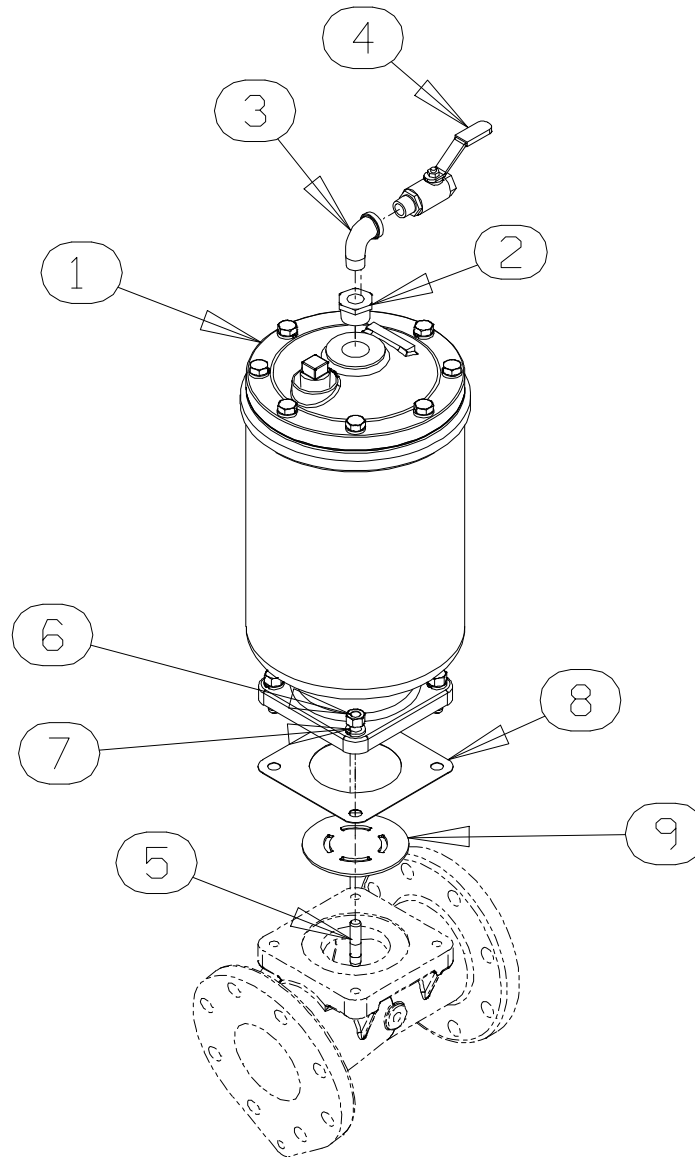


Figure 7. Priming Chamber Kit

PARTS LIST

ITEM NO.	PART NAME	PART NUMBER	QTY
1	PRIMING CHAMBER ASSY	46112-709	1
2	PIPE BUSHING	AP1608 15070	1
3	STREET ELBOW	RS08 11999	1
4	BALL VALVE	26631-052	1
5	STUD	C0809 15991	4
6	HEX NUT	D08 15991	4
7	LOCK WASHER	J08 15991	4
8	* GASKET	38687-053 19060	1
9	BAFFLE	31113-011 17000	1

* INDICATES PARTS RECOMMENDED FOR STOCK

ILLUSTRATION

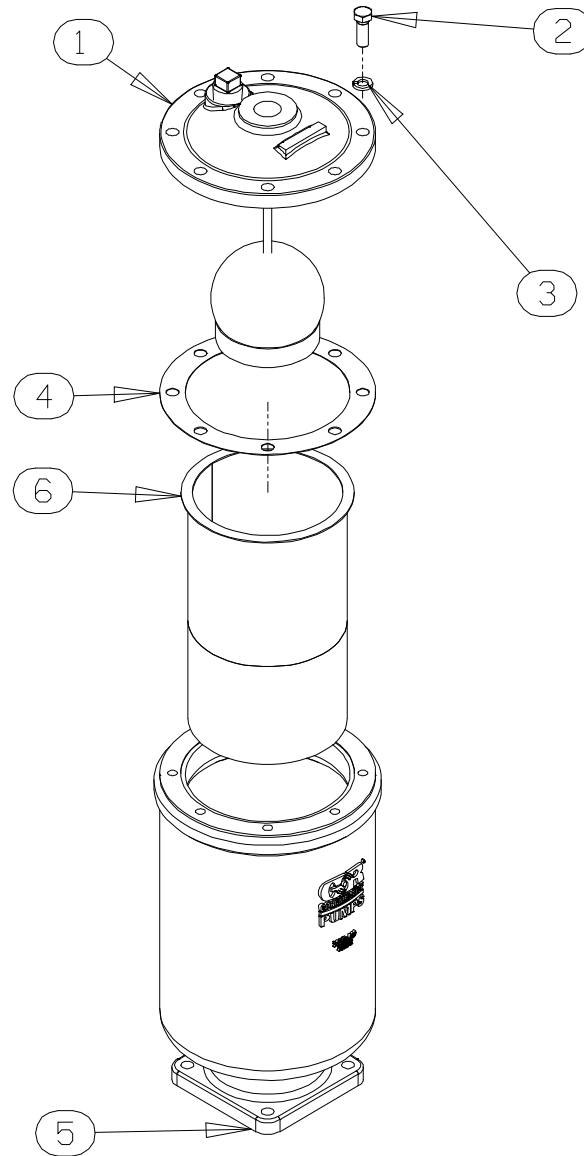


Figure 8. Priming Chamber Assembly

PARTS LIST

ITEM NO.	PART NAME	PART NUMBER	QTY
1	PRIMING VALVE -ORIFICE BUTTON	26664-007 26688-021	1 1
2	HEX HD CAPSCREW	B0806 15991	8
3	LOCKWASHER	J08 15991	8
4	* PRIMING VALVE GASKET	38683-657 19060	1
5	PRIMING CHAMBER	38343-020 10000	1
6	STRAINER ASSY	46641-222 17000	1

* INDICATES PARTS RECOMMENDED FOR STOCK

ILLUSTRATION

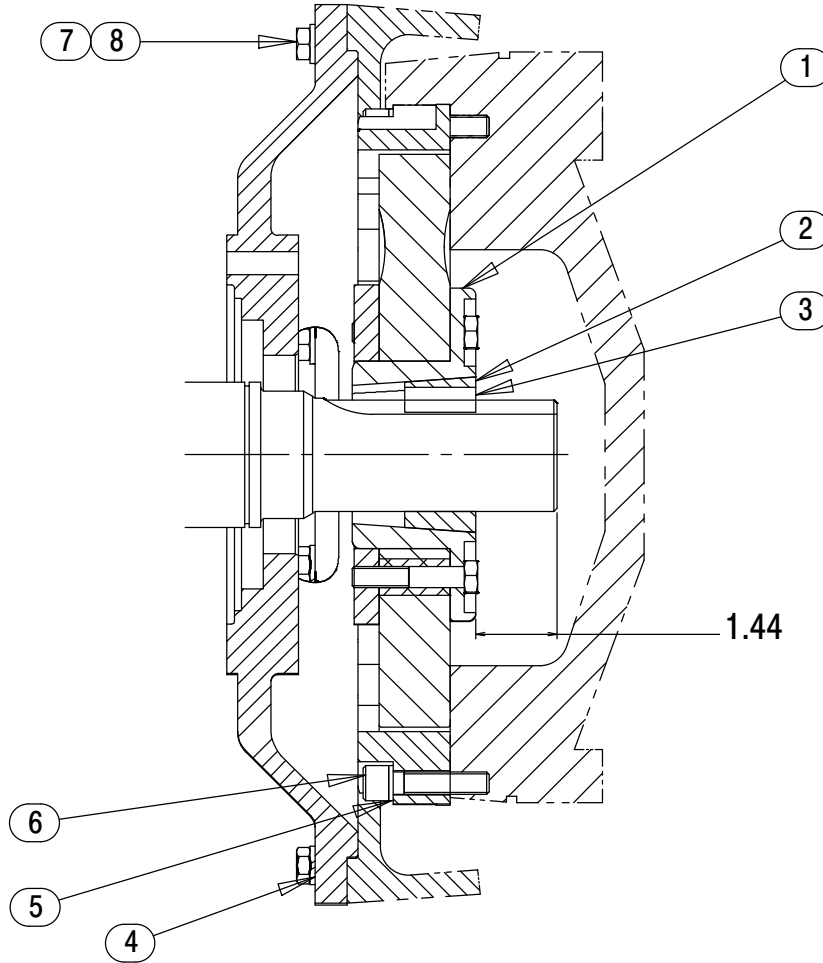


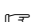





Figure 9. Drive Assembly

PARTS LIST

ITEM NO.	PART NAME	PART NUMBER	QTY
1	COUPLING KIT	44165-016	1
2	BUSHING	24131-498	1
3	-KEY	24113-603	REF
4	DRIVE FLANGE	38545-004 10000	REF
5	LOCKWASHER	21171-536	8
6	 SOC HD CAPSCREW	BD0606-1/2 15991	8
6	 SOC HD CAPSCREW	22644-220	8
7	 HEX HD CAPSCREW	B0605 15991	12
7	 HEX HD CAPSCREW	22645-164	12
8	 LOCKWASHER	J06 15991	12
8	 LOCKWASHER	21171-511	12

-  USE FOR SAE APPLICATIONS
-  USE FOR METRIC APPLICATIONS