

ILLUSTRATION

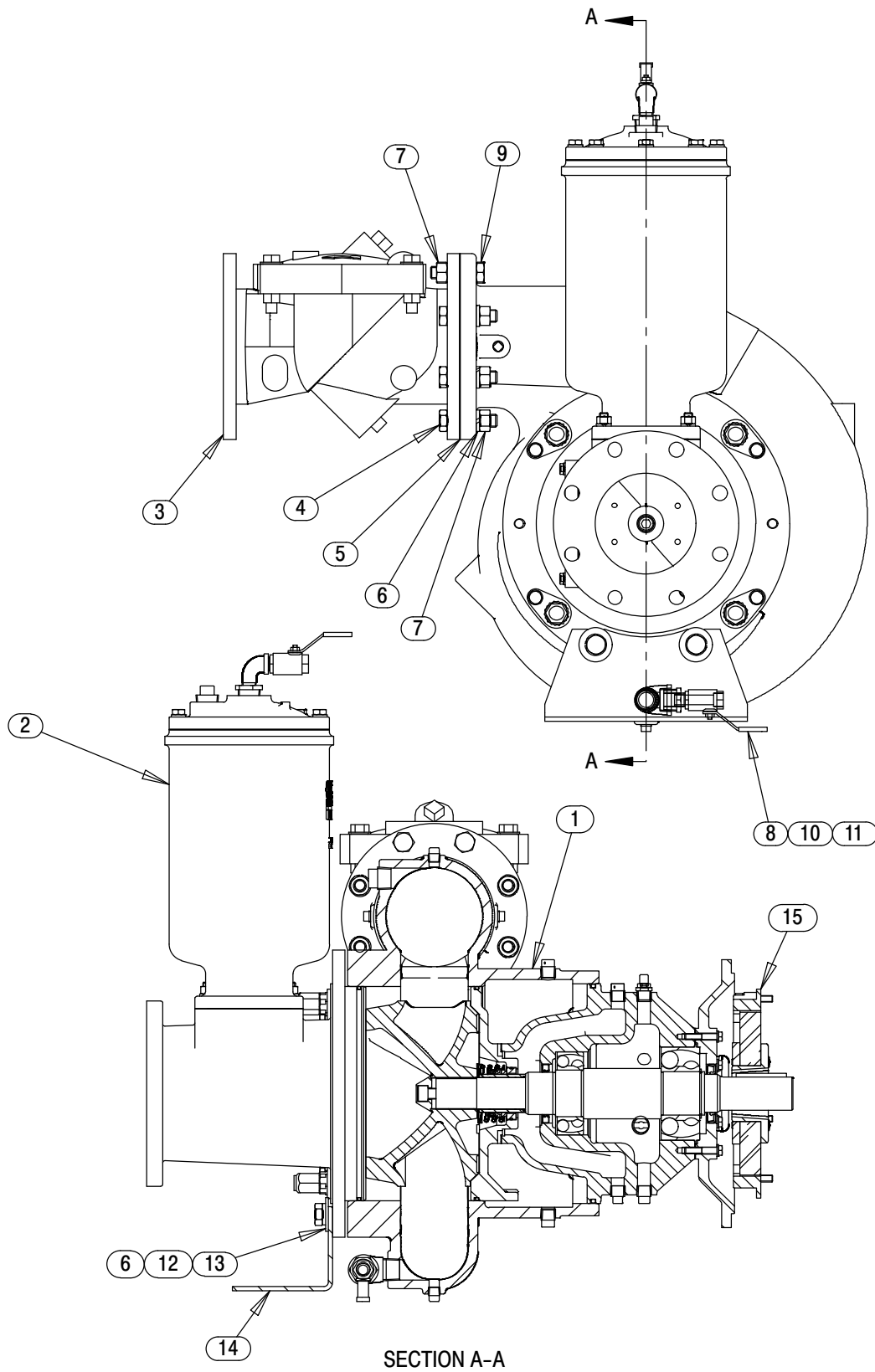


Figure 3. Pump End Assembly

Pump End Assembly

PARTS LIST

ITEM NO.	PART NAME	PART NUMBER	QTY
1	PUMP SUB ASSY	46183-040	1
2	PRIMING CHAMBER KIT	48275-005	1
3	6" CHECK VALVE	26642-134	1
	-CHECK VALVE	26642-126	1
	* -FLAPPER	26688-001	1
	* -COVER O-RING	25152-377	1
	* -FLANGE GASKET	25113-036	1
4	HEX HEAD CAP SCREW	B1212 15991	6
5	GASKET	25113-036	1
6	LOCK WASHER	J12 15991	8
7	HEX NUT	D12 15991	8
8	BALL VALVE 1/2"	26631-052	1
9	HEX HEAD CAP SCREW	B1211 15991	2
10	REDUCER PIPE BUSHING	AP1608 11999	1
11	STREET ELBOW	RS16 11999	1
12	HEX HEAD CAP SCREW	B1205 15991	2
13	FLAT WASHER	K12 15991	2
14	SUCTION SUPPORT BRACKET	34265-079 15080	1
15	DRIVE ASSEMBLY	44162-159	1
NOT SHOWN:			
	NAMEPLATE BLANK	38819-002 13000	1
	DRIVE SCREW	BM#04-03 17000	4
	SUCTION STICKER	6588AG	1
	DISCHARGE STICKER	6588BJ	1
	G-R DECAL 6 IN	GR-06	1
	6" STRAINER ASSEMBLY	7823A 24000	1
	WARNING DECAL	2613FE	1
	INSTRUCTION TAG	38817-085	1

* INDICATES PARTS RECOMMENDED FOR STOCK

ILLUSTRATION

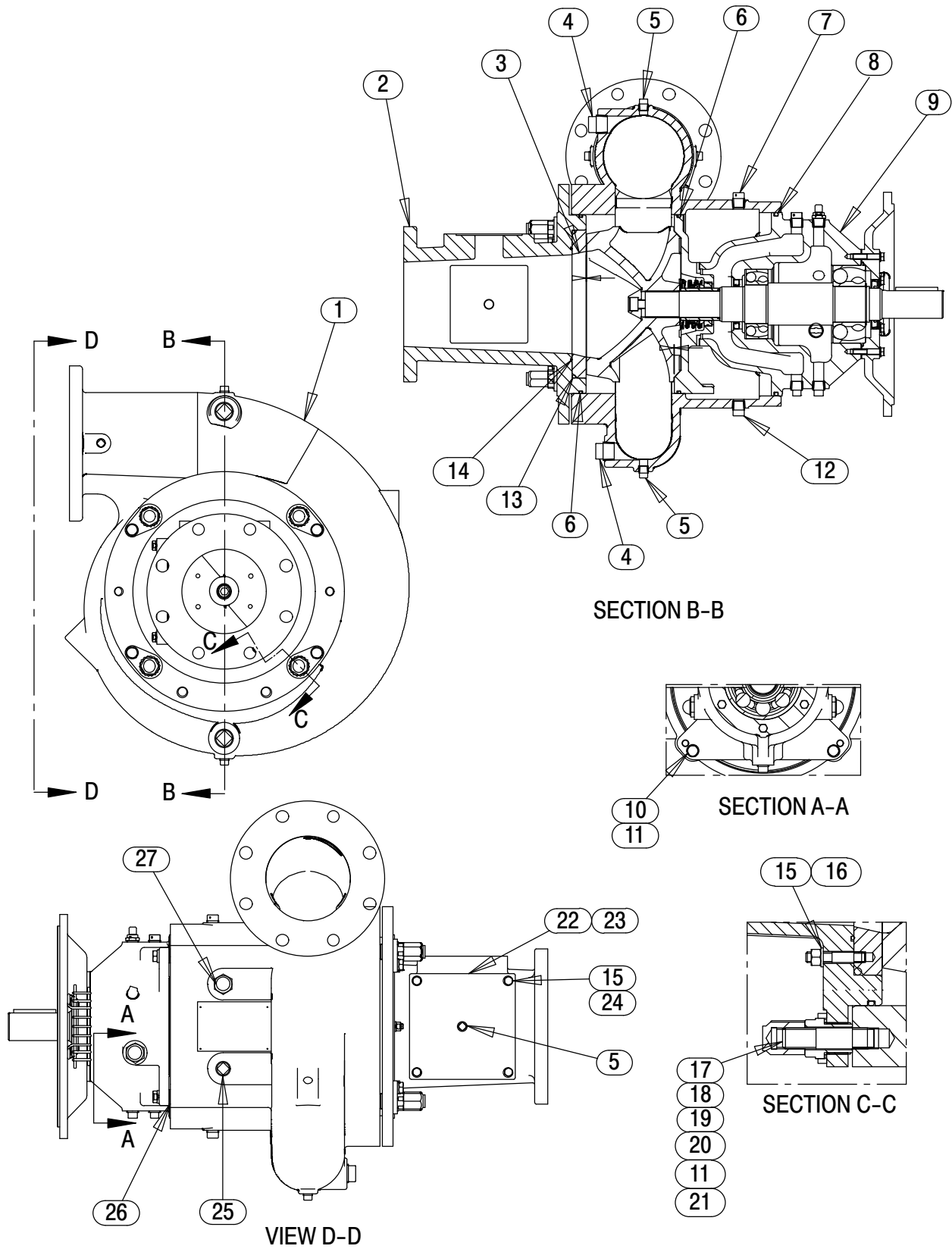


Figure 4. Pump Sub Assembly

PARTS LIST
Pump Sub Assembly

ITEM NO.	PART NAME	PART NUMBER	QTY
1	☞ PUMP CASING	38218-018 10000	1
2	SUCTION SPOOL 6"	38642-625 10000	1
3	* WEAR PLATE ASSEMBLY	46451-768	1
4	PIPE PLUG	P16 10009	2
5	☞ PIPE PLUG	P06 15079	5
6	* O-RING	25154-381	2
7	VENTED PIPE PLUG	4823A 15079	1
8	* O-RING	S1676	1
9	REPAIR ROTATING ASSEMBLY	44163-257	1
10	HEX HEAD CAP SCREW	B0806 15991	4
11	LOCK WASHER	J08 15991	8
12	PIPE PLUG	P08 15079	1
13	* O-RING	25154-449	1
14	* O-RING	25154-265	1
15	LOCK WASHER	J06 15991	7
16	HEX NUT	D06 15991	3
17	STUD	C1213 15991	4
18	ADJUSTING SCREW	31871-070 1500G	4
19	BACK COVER NUT	31871-073 15000	4
20	LOCK COLLAR	38115-551 15001	4
21	HEX HEAD CAP SCREW	B0804 15991	4
22	MOUNTING PAD	33541-030 15080	1
23	GASKET	38687-552 18000	1
24	HEX HEAD CAP SCREW	B0606 15991	4
25	PIPE PLUG	P12 15079	2
26	ADJ SHIM	13131-3 17040	8
27	SIGHT GAUGE	S1471	2
	☞ INCLUDED W/REPAIR PUMP CASING ASSY	46474-905	1

* INDICATES PARTS RECOMMENDED FOR STOCK

ILLUSTRATION

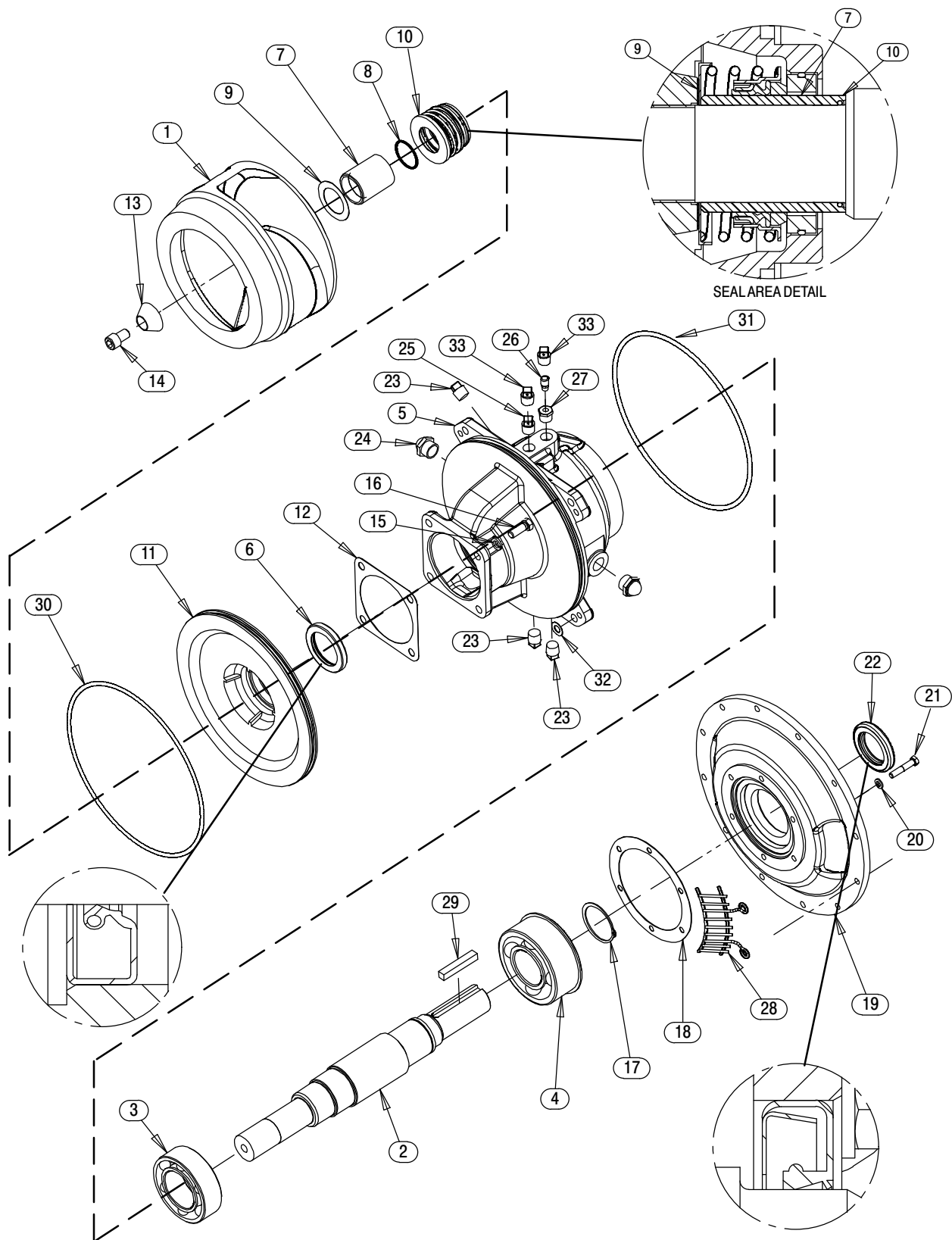


Figure 5. Repair Rotating Assembly

PARTS LIST
Repair Rotating Assembly

ITEM NO.		PART NAME	PART NUMBER	QTY
1	*	IMPELLER	38628-036 11000	1
2	*	IMPELLER SHAFT	38515-586 1706H	1
3	*	BALL BEARING	23422-019	1
4	*	BALL BEARING	23422-414	1
5		BEARING HOUSING	38251-513 10000	1
6	*	OIL SEAL	25227-771	1
7	*	SHAFT SLEEVE	31163-019 1706H	1
8	*	O-RING	25154-131	1
9		ADJ SHIM SET	48261-057	1
10		SEAL ASSEMBLY	46512-149	1
11		SEAL PLATE	38272-256 10000	1
12		GASKET	10959G 20000	1
13		IMPELLER WASHER	31514-015 17000	1
14		SOCKET HEAD CAP SCREW	DM1004S 17090	1
15		LOCK WASHER	J08 15991	4
16		HEX HEAD CAP SCREW	B0805-1/2 15991	4
17		RETAINING RING	S720	1
18		GASKET	38683-474 18000	1
19		DRIVE FLANGE	38545-004 10000	1
20		LOCK WASHER	J06 15991	6
21		CAP SCREW	21632-938	6
22	*	OIL SEAL	S1907	1
23		PIPE PLUG	P08 15079	3
24		SIGHT GAUGE	S1471	2
25		VENTED PLUG	4823A 15079	1
26		AIR VENT	S1530	1
27		REDUCER PIPE BUSHING	AP0802 15079	1
28		INTERMEDIATE GUARD	42381-509 24152	2
29		KEY	24113-603	REF
30	*	O-RING	25154-381	1
31	*	O-RING	S1676	1
32	*	ADJ SHIM SET	13131 17040	4
33		SHIPPING PLUG	11495B 15079	2
NOT SHOWN:				
		INSTRUCTION TAG	6588U	1
		WARNING DECAL	38817-102	1
		LUBRICATION DECAL	38816-079	2
		OIL LEVEL DECAL	38816-123	2

* INDICATES PARTS RECOMMENDED FOR STOCK

ILLUSTRATION

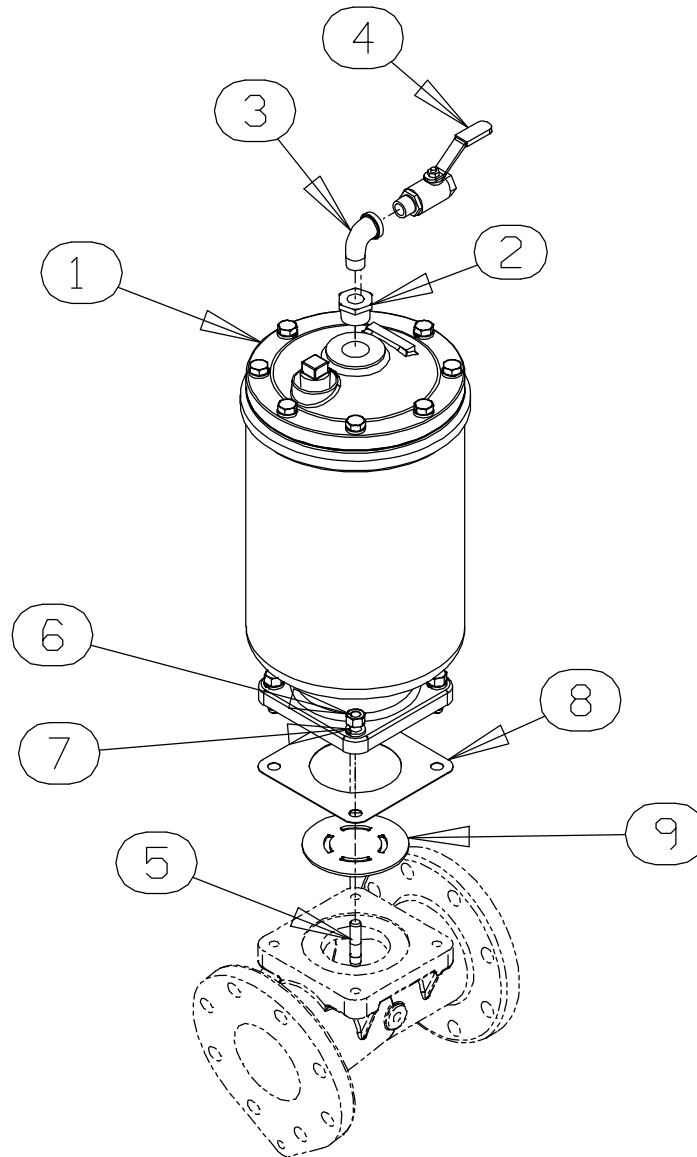


Figure 6. Priming Chamber Kit

PARTS LIST

ITEM NO.	PART NAME	PART NUMBER	QTY
1	PRIMING CHAMBER ASSY	46112-709	1
2	PIPE BUSHING	AP1608 15070	1
3	STREET ELBOW	RS08 11999	1
4	BALL VALVE	26631-052	1
5	STUD	C0809 15991	4
6	HEX NUT	D08 15991	4
7	LOCK WASHER	J08 15991	4
8	* GASKET	38687-053 19060	1
9	BAFFLE	31113-011 17000	1

* INDICATES PARTS RECOMMENDED FOR STOCK

ILLUSTRATION

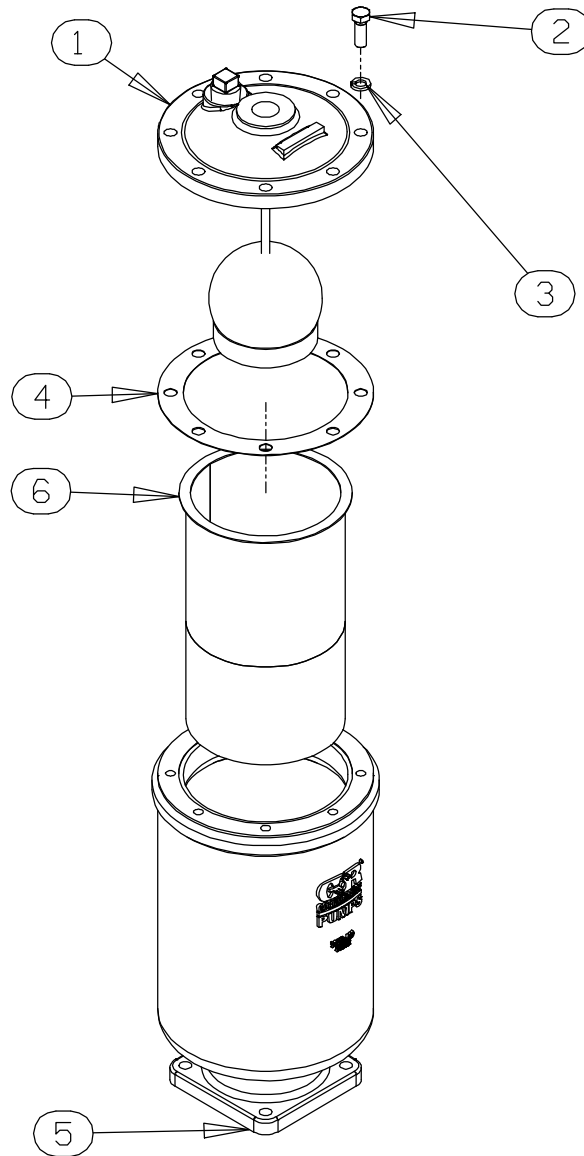


Figure 7. Priming Chamber Assembly

PARTS LIST

ITEM NO.	PART NAME	PART NUMBER	QTY
1	PRIMING VALVE	26664-007	1
	-ORIFICE BUTTON	26688-021	1
2	HEX HD CAPSCREW	B0806 15991	8
3	LOCKWASHER	J08 15991	8
4	* PRIMING VALVE GASKET	38683-657 19060	1
5	PRIMING CHAMBER	38343-020 10000	1
6	STRAINER ASSY	46641-222 17000	1

* INDICATES PARTS RECOMMENDED FOR STOCK

ILLUSTRATION

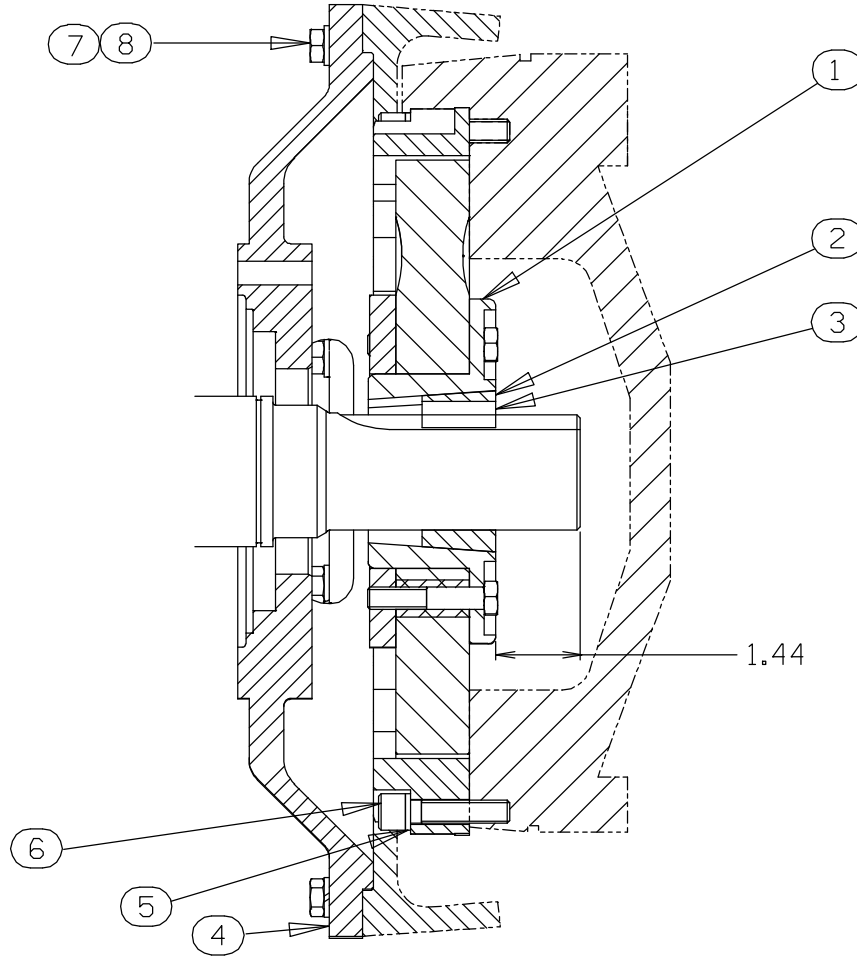


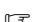





Figure 8. Drive Assembly

PARTS LIST

ITEM NO.	PART NAME	PART NUMBER	QTY
1	COUPLING ASSEMBLY	44165-016	1
2	BUSHING	24131-498	1
3	KEY	24113-603	1
4	DRIVE FLANGE	38545-004 10000	1
5	LOCKWASHER	21171-536	8
6	 SOC HD CAPSCREW	BD0606 1/2 15991	8
6	 SOC HD CAPSCREW	22644-220	8
7	 HEX HD CAPSCREW	B0605 15991	12
7	 HEX HD CAPSCREW	22645-164	12
8	 LOCKWASHER	J06 15991	12
8	 LOCKWASHER	21171-511	12

 USE FOR SAE APPLICATIONS

 USE FOR METRIC APPLICATIONS