

ILLUSTRATION

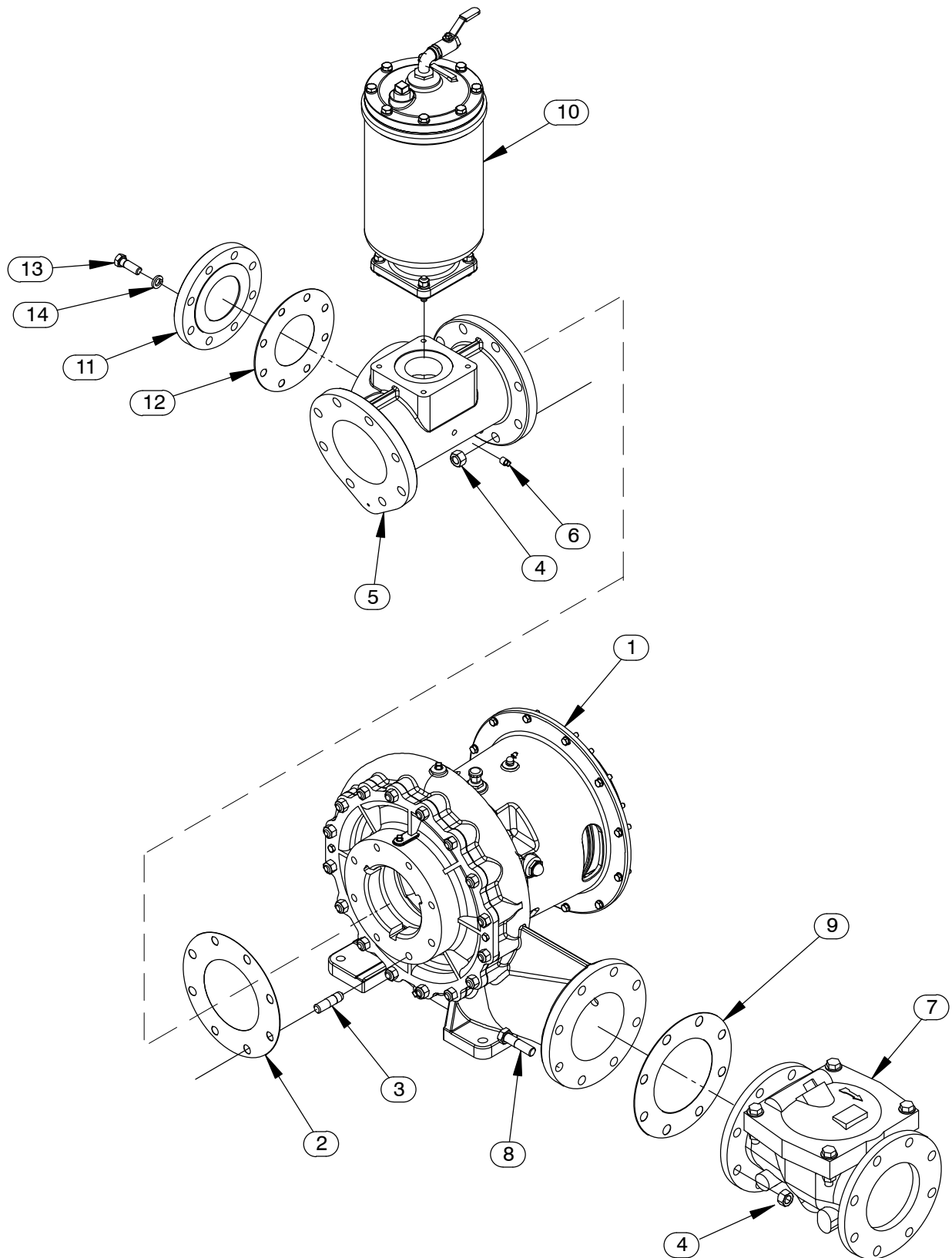


Figure 4. Pump Assembly

Pump Assembly
PARTS LIST

ITEM NO.	PART NAME	PART NUMBER	QTY
1	PUMP END ASSEMBLY	46133-934	1
2	* GASKET	1679G 18000	1
3	STUD	C1211 15991	8
4	HEX NUT	D12 15991	16
5	6" HOPPER SPOOL	38642-507 10000	1
6	PIPE PLUG	P04 15079	1
7	CHECK VALVE 6"	26642-134	1
	* -FLAPPER	26688-001	1
	* -O-RING	25152-377	1
8	HEX HEAD CAP SCREW	B1212 15991	8
9	* GASKET	25113-036	1
10	PRIMING CHAMBER KIT	48275-005	1
11	4" BLIND FLANGE ASSEMBLY	42111-358	1
12	* GASKET	25113-034	1
13	HEX HEAD CAP SCREW	B1008 15991	8
14	LOCK WASHER	J10 15991	8
NOT SHOWN:			
	G-R DECAL	GR-06	1
	LUBE DECAL	38816-075	1
	WARNING DECAL	2613FE	1
	STRAINER	S1529	1
	OIL LEVEL DECAL	38816-123	1
	SUCTION STICKER	6588AG	1
	DISCHARGE STICKER	6588BJ	1
	NAMEPLATE BLANK	38819-002 13000	1
	DRIVE SCREW	BM#04-03 17000	4
	INSTRUCTION TAG	38817-085	1

* INDICATES PARTS RECOMMENDED FOR STOCK

ILLUSTRATION

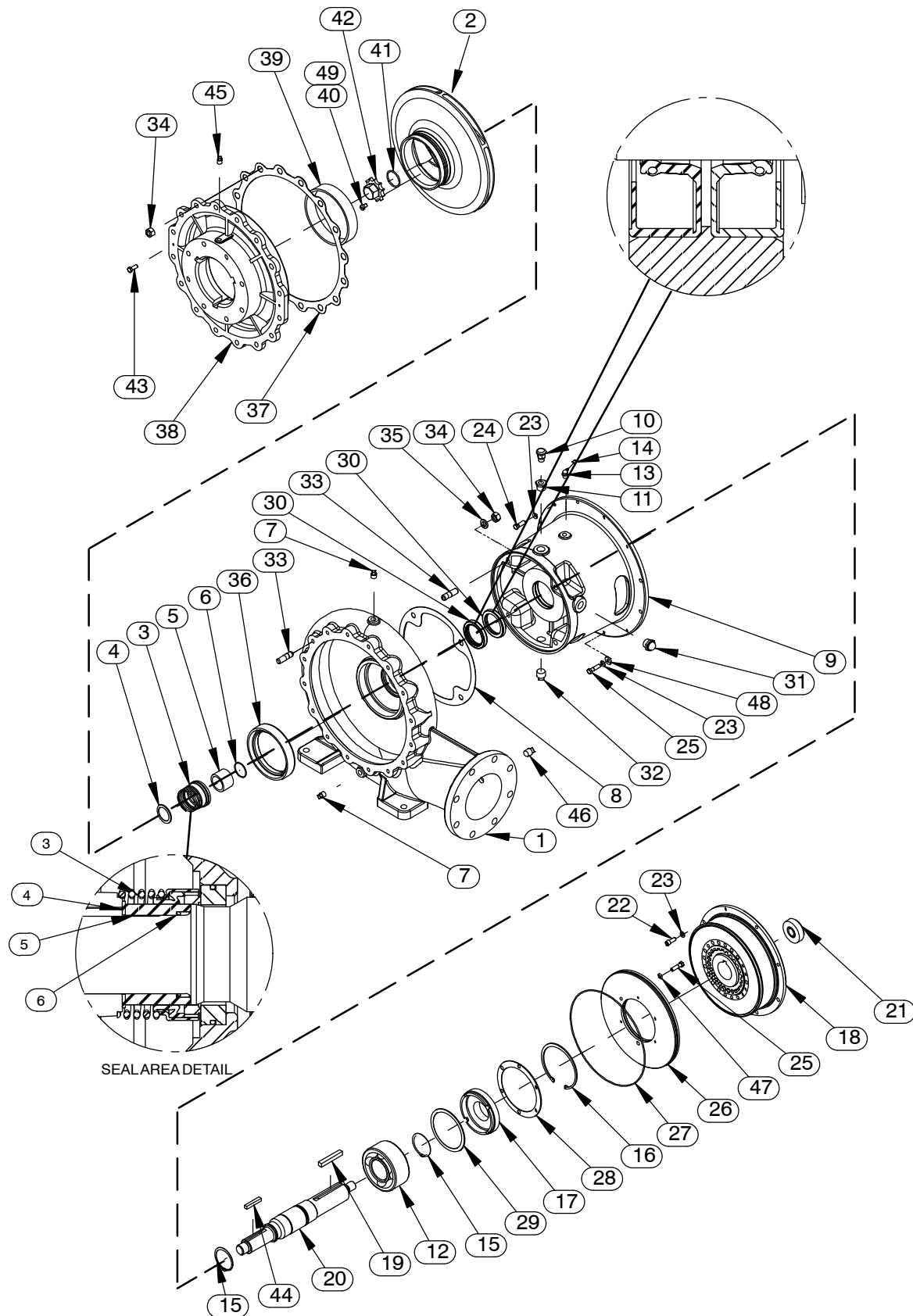


Figure 5. Pump End Assembly

PARTS LIST

Pump End Assembly

ITEM NO.	PART NAME	PART NUMBER	QTY	ITEM NO.	PART NAME	PART NUMBER	QTY
☞ 1	PUMP CASING	SEE NOTE BELOW	1	26	PLATE, OIL CHAMBER	31255-009 15080	1
2 *	IMPELLER	38628-546 11010	1	27 *	O-RING	25152-278	1
3 *	SEAL ASSY	25271-984	1	28 *	GASKET	38683-446 18000	1
4 *	ADJ. SHIM SET	8499 17000	1	29	BEARING SHIM SET	8548 15990	1
5	SHAFT SLEEVE	31163-017 17060	1	30 *	OIL SEAL	25227-773	2
6 *	O-RING	25154-132	1	31	SIGHT GAUGE	S1471	1
☞ 7	PIPE PLUG	P06 15079	2	32	PIPE PLUG	P12 15079	1
8 *	GASKET	38684-502 18000	1	☞ 33	STUD	C1009 15991	20
9	INTERMEDIATE	38264-702 10000	1	34	HEX NUT	D10 15991	20
10	AIR VENT	S1703	1	35	LOCK WASHER	J10 15991	4
11	REDUCER PIPE BUSHING	AP1206 15079	1	☞ 36	BALANCE RING	7017 14000	1
12 *	BALL BEARING	23421-414	1	37 *	GASKET - VOLUTE	926G 18000	1
13	LUBE FITTING	S194	1	38	SUCTION HEAD	38247-417 10000	1
14	CAP PLUG	25141-151	1	39	WEAR RING	7016 14000	1
15	RETAINING RING	S720	2	40	FIL HEAD SCREW	AW0602 17000	1
16	RETAINING RING	24121-080	1	41 *	O-RING	S300	1
17	BEARING RETAINER	38322-526 10000	1	42	IMPELLER NUT	2177B 14000	1
18	FLEX COUPLING, BOWEX	24392-201	1	43	HEX HEAD CAP SCREW	B0604 15991	2
19 *	SHAFT KEY	N0814 15990	1	44 *	IMPELLER KEY	N0609-1/2 15990	1
20 *	IMPELLER SHAFT	38515-584 1706H	1	45	PIPE PLUG	P04 15079	1
21	PILOT BUSHING ASSY	44144-003	1	46	PIPE PLUG	P08 15079	1
22	SOC HEAD CAP SCREW	BD0604 15990	8	47	LOCK WASHER	J06 15991	3
23	LOCK WASHER	J06 15991	20	48	FLAT WASHER	K06 15991	2
24	HEX HEAD CAP SCREW	B0604 15991	10	49	LOCK WASHER	J06 17000	1
25	HEX HEAD CAP SCREW	B0606 15991	5	NOT SHOWN:			
					INTER GUARD ASSY	42381-504	2

* INDICATES PARTS RECOMMENDED FOR STOCK

☞ INCLUDED WITH REPAIR 46474-353 1
PUMP CASING ASSY

ILLUSTRATION

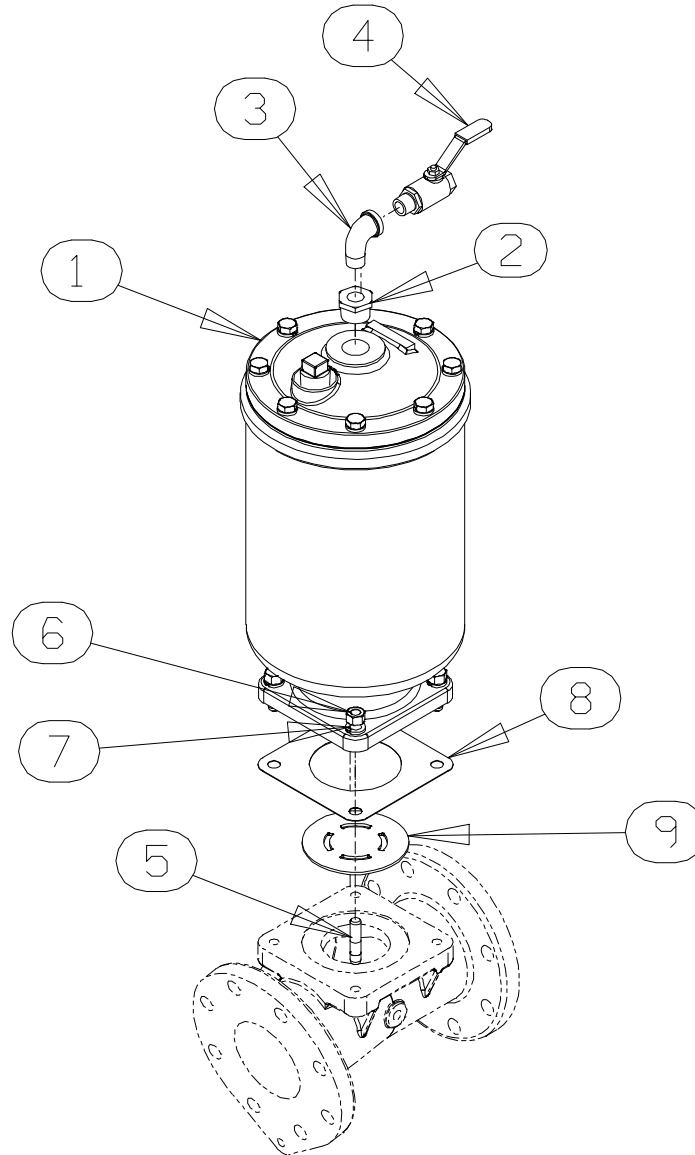


Figure 6. Priming Chamber Kit

PARTS LIST

ITEM NO.	PART NAME	PART NUMBER	QTY
1	PRIMING CHAMBER ASSY	46112-709	1
2	PIPE BUSHING	AP1608 15070	1
3	STREET ELBOW	RS08 11999	1
4	BALL VALVE	26631-052	1
5	STUD	C0809 15991	4
6	HEX NUT	D08 15991	4
7	LOCK WASHER	J08 15991	4
8	* GASKET	38687-053 19060	1
9	BAFFLE	31113-011 17000	1

* INDICATES PARTS RECOMMENDED FOR STOCK

ILLUSTRATION

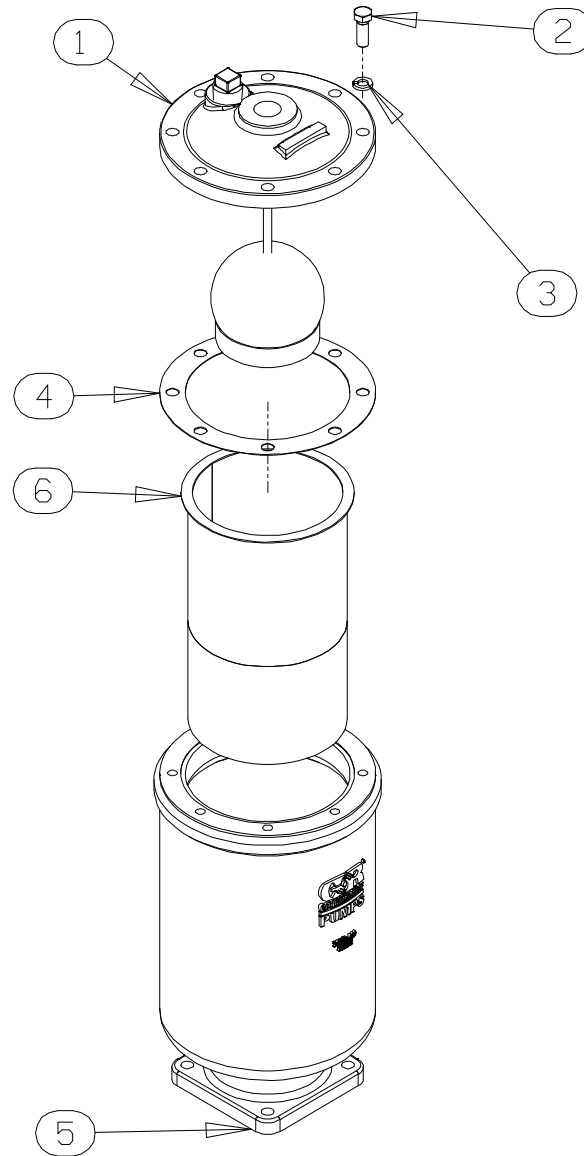


Figure 7. Priming Chamber Assembly

PARTS LIST

ITEM NO.	PART NAME	PART NUMBER	QTY
1	PRIMING VALVE -ORIFICE BUTTON	26664-007 26688-021	1 1
2	HEX HD CAPSCREW	B0806 15991	8
3	LOCKWASHER	J08 15991	8
4	* PRIMING VALVE GASKET	38683-657 19060	1
5	PRIMING CHAMBER	38343-020 10000	1
6	STRAINER ASSY	46641-222 17000	1

* INDICATES PARTS RECOMMENDED FOR STOCK