

ILLUSTRATION

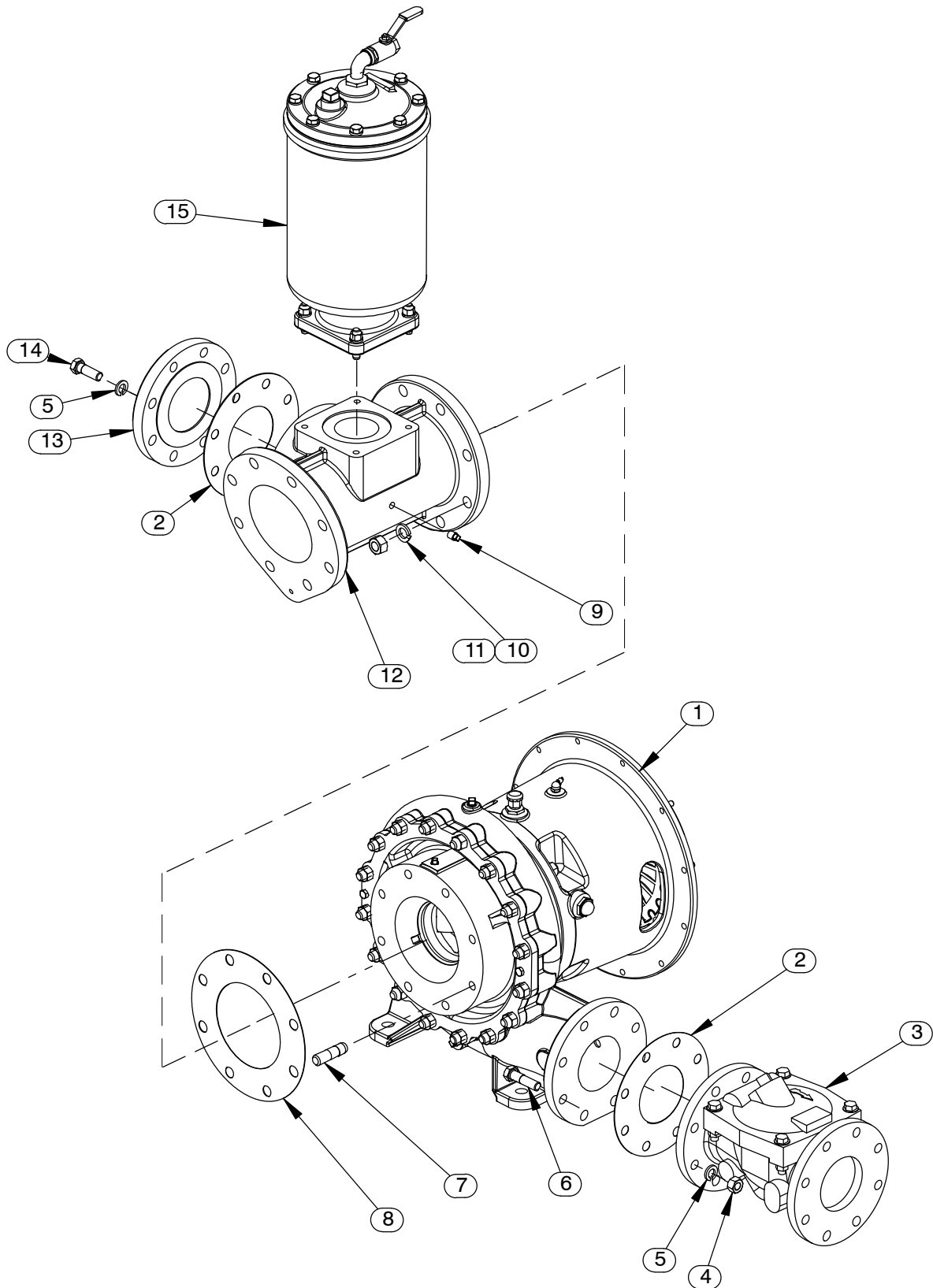


Figure 4. Pump Assembly

Pump Assembly
PARTS LIST

ITEM NO.	PART NAME	PART NUMBER	QTY
1	PUMP END ASSY	46133-937	1
2	* GASKET	1676G 18000	2
3	CHECK VALVE 4"	26642-124	1
	* -FLAPPER	26688-005	1
	* -O-RING	25152-366	1
4	HEX NUT	D10 15991	8
5	LOCK WASHER	J10 15991	16
6	HEX HEAD CAP SCREW	B1010 15991	8
7	STUD	C1211 15991	8
8	* GASKET	1679G 18000	1
9	PIPE PLUG	P04 15079	1
10	LOCK WASHER	J12 15991	8
11	HEX NUT	D12 15991	8
12	6" HOPPER SPOOL	38642-507 10000	1
13	4" BLIND FLANGE ASSEMBLY	42111-358	1
14	HEX HEAD CAP SCREW	B1008 15991	8
15	PRIMING CHAMBER KIT	48275-005	1
NOT SHOWN:			
	WARNING DECAL	2613FE	1
	G-R DECAL	GR-06	1
	LUBE DECAL	38816-075	1
	STRAINER	S1529	1

* INDICATES PARTS RECOMMENDED FOR STOCK

ILLUSTRATION

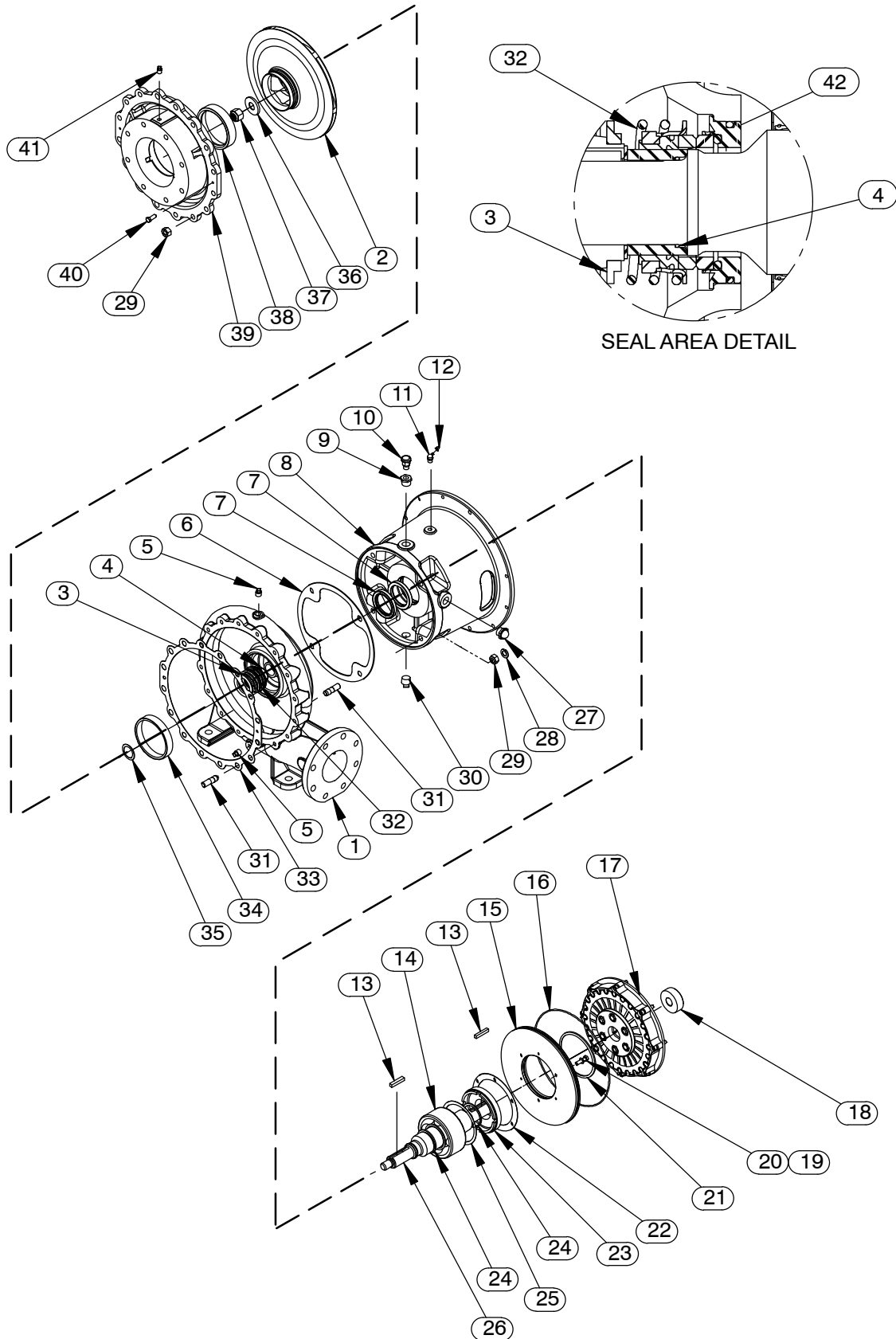


Figure 5. Pump End Assembly

PARTS LIST
Pump End Assembly

ITEM NO.	PART NAME	PART NUMBER	QTY	ITEM NO.	PART NAME	PART NUMBER	QTY
☞ 1	PUMP CASING	SEE NOTE BELOW	1	26 *	IMPELLER SHAFT	38515-585 1706H	1
2 *	IMPELLER	38628-547 10010	1	27	SIGHT GAUGE	S1471	1
3	SPRING RETAINER	31167-023 15000	1	28	LOCK WASHER	J10 15991	4
4 *	O-RING	25154-026	REF	29	HEX NUT	D10 15991	20
☞ 5	PIPE PLUG	P06 15079	2	☞ 30	PIPE PLUG	P12 15079	1
6 *	GASKET	38684-502 18000	1	☞ 31	STUD	C1009 15991	20
7 *	OIL SEAL	25227-773	2	32 *	MECH SEAL	46512-048	1
8	INTERMEDIATE	38264-702 10000	1	33 *	GASKET	7557G 18000	1
9	REDUCER PIPE BUSHING	AP1206 15079	1	☞ 34	BALANCE RING	64H6 14000	1
10	AIR VENT	S1703	1	35	SHIM SET	5091 17090	1
11	LUBE FITTING	S194	1	36	FLAT WASHER	K14 15991	1
12	CAP PLUG	25141-151	1	37	NYLON LOCK NUT	BC14S 15991	1
13 *	KEY	N0608 15990	2	38	WEAR RING	64H5 14000	1
14 *	DBL ROLLER BEARING	23421-414	1	39	SUCTION HEAD	38247-418 10000	1
15	PLATE, OIL CHAMBER	31255-009 15080	1	40	HEX HEAD CAP SCREW	B0604 15991	2
16 *	O-RING	25152-278	1	☞ 41	PIPE PLUG	P04 15079	1
17	DRIVE ASSEMBLY	44162-119	1	42	SHAFT SLEEVE	31163-018 17060	1
18	PILOT BUSHING	8312A 15010	1	NOT SHOWN:			
19	LOCK WASHER	J06 15991	3		SUCTION STICKER	6588AG	1
20	HEX HEAD CAP SCREW	B0606 15991	3		DISCHARGE STICKER	6588BJ	1
21	RETAINING RING	24121-080	1		OIL LEVEL DECAL	38816-123	1
22 *	GASKET	38683-446 18000	1		INSTRUCTION TAG	38817-085	1
23	BEARING RETAINER	38322-526 10000	1		DRIVE SCREW	BM#04-03 17000	4
24	RETAINING RING	S720	2		NAMEPLATE BLANK	38819-002 13000	1
25 *	ADJ SHIM SET	8548 15990	1		INTER GUARD ASSY	42381-504	2

* INDICATES PARTS RECOMMENDED FOR STOCK

☞ INCLUDED WITH REPAIR 46474-355 1
PUMP CASING ASSY

ILLUSTRATION

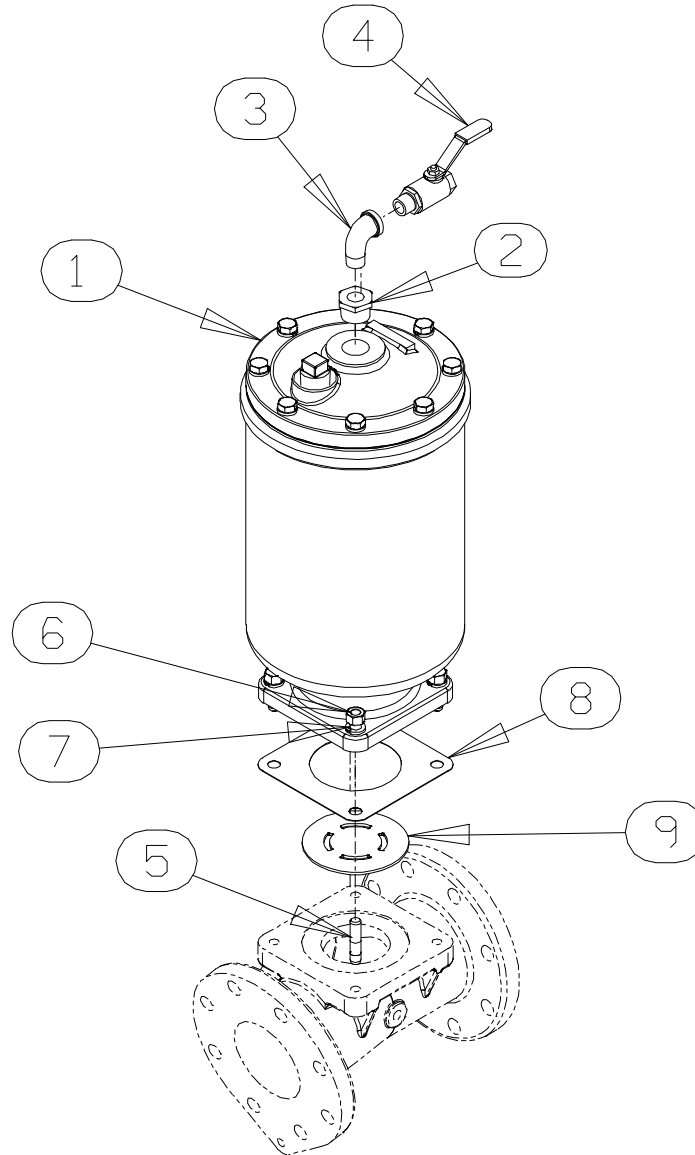


Figure 6. Priming Chamber Kit

PARTS LIST

ITEM NO.	PART NAME	PART NUMBER	QTY
1	PRIMING CHAMBER ASSY	46112-709	1
2	PIPE BUSHING	AP1608 15070	1
3	STREET ELBOW	RS08 11999	1
4	BALL VALVE	26631-052	1
5	STUD	C0809 15991	4
6	HEX NUT	D08 15991	4
7	LOCK WASHER	J08 15991	4
8	* GASKET	38687-053 19060	1
9	BAFFLE	31113-011 17000	1

* INDICATES PARTS RECOMMENDED FOR STOCK

ILLUSTRATION

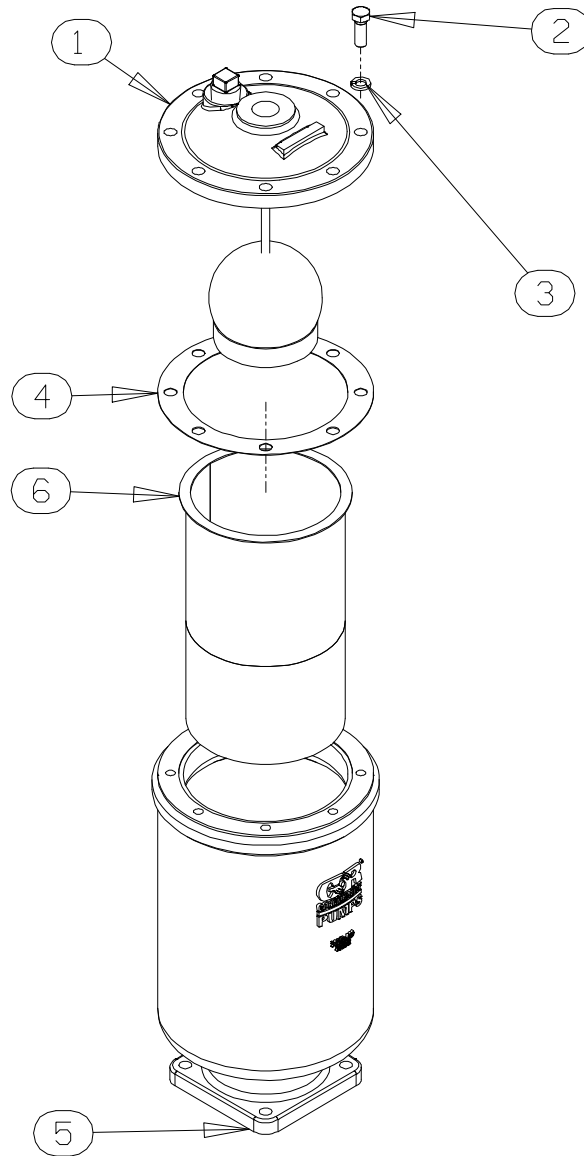


Figure 7. Priming Chamber Assembly

PARTS LIST

ITEM NO.	PART NAME	PART NUMBER	QTY
1	PRIMING VALVE -ORIFICE BUTTON	26664-007 26688-021	1 1
2	HEX HD CAPSCREW	B0806 15991	8
3	LOCKWASHER	J08 15991	8
4	* PRIMING VALVE GASKET	38683-657 19060	1
5	PRIMING CHAMBER	38343-020 10000	1
6	STRAINER ASSY	46641-222 17000	1

* INDICATES PARTS RECOMMENDED FOR STOCK

ILLUSTRATION

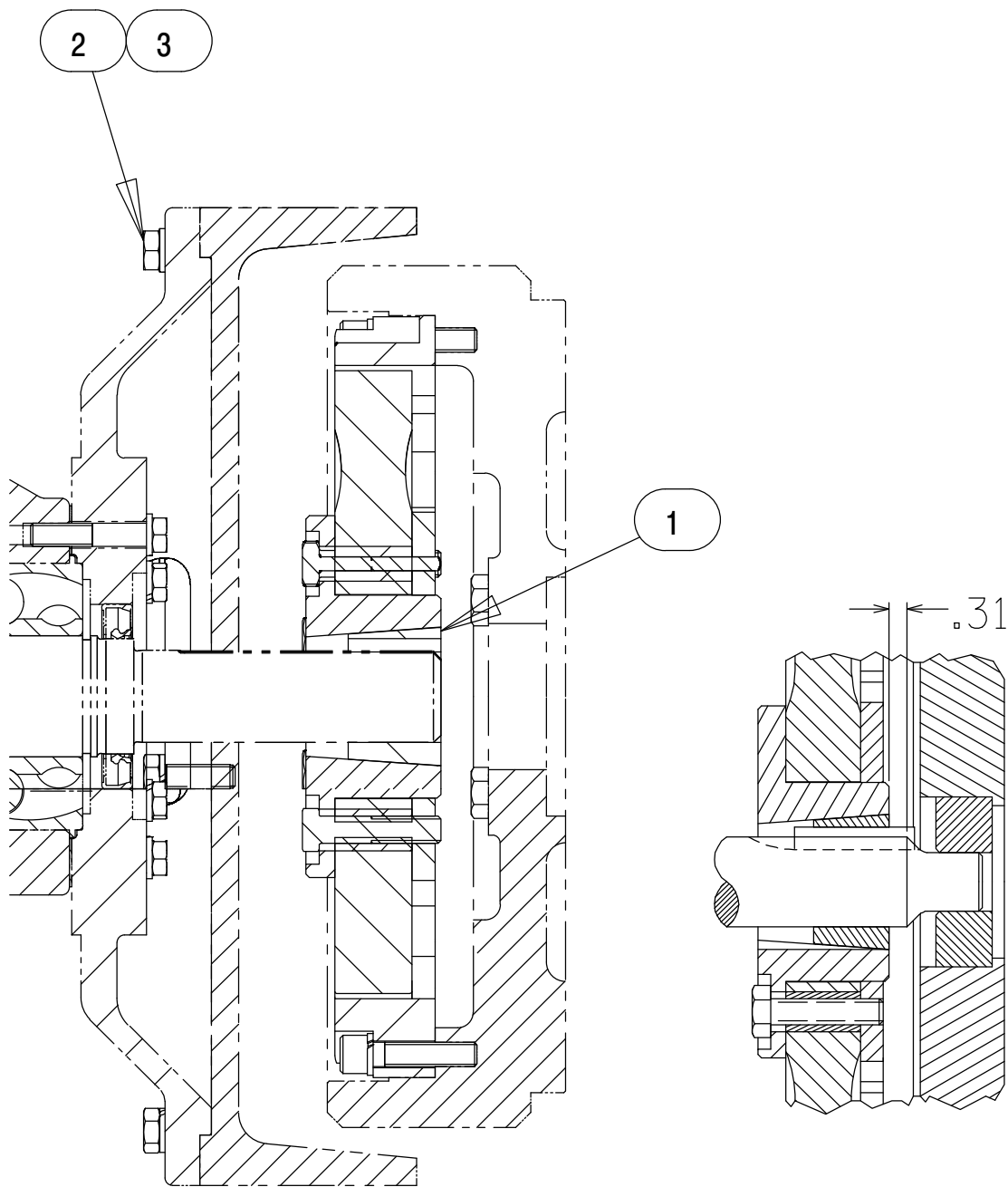


Figure 8. Drive Assembly

PARTS LIST
Drive Assembly

ITEM NO.	PART NAME	PART NUMBER	QTY
1	COUPLING KIT	48112-001	1
	-BUSHING	24131-345	1
	-COUPLING ASSEMBLY	44165-011	1
	☞ -LOCKWASHER	J06 15991	16
	◆ -LOCKWASHER	21171-536	8
	☞ -SOCKET HD CAPSCREW	BD0606-1/2 15991	8
	◆ -SOCKET HD CAPSCREW	22644-220	8
	☞ -SOCKET HD CAPSCREW	BD0606-1/2S 15990	8
2	☞ HEX HD CAPSCREW	B0605 15991	12
2	◆ HEX HD CAPSCREW	22645-164	12
3	☞ LOCKWASHER	J06 15991	12
3	◆ LOCKWASHER	21171-511	12
	☞ USE FOR SAE APPLICATIONS		
	◆ USE FOR METRIC APPLICATIONS		