

ILLUSTRATION

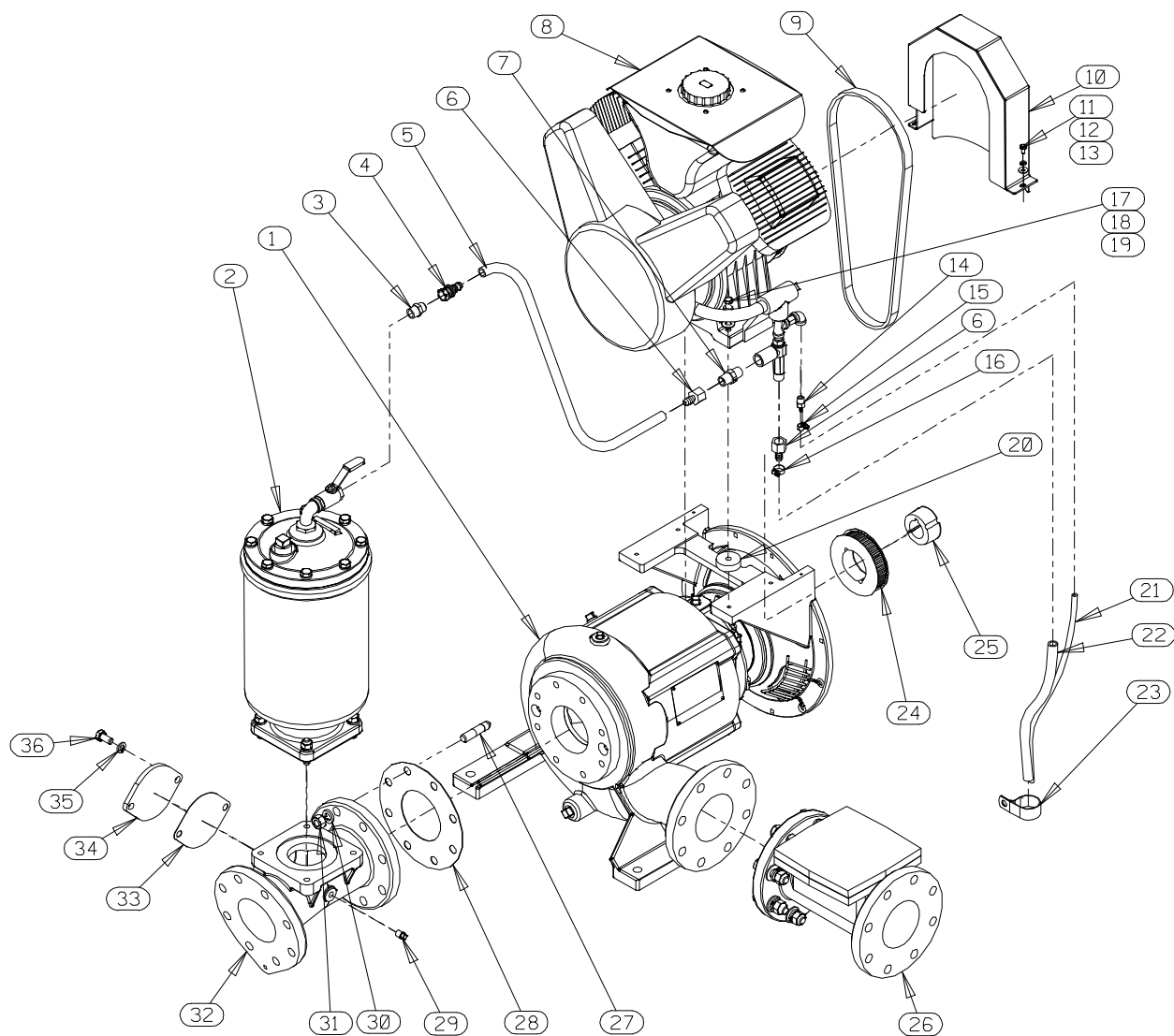


Figure 3. Pump Assembly

Pump Assembly

PARTS LIST

ITEM NO.	PART NAME	PART NUMBER	QTY
1	PUMP END	64C60C-(SAE 4/10)	1
2	PRIMING CHAMBER KIT	48275-005	1
3	CONNECTOR	S1598	1
4	HOSE BARB FITTING	26523-047	1
5	1/2" ID x 30" LG. HOSE	18513-113	1
6	HOSE BARB FITTING	26523-446	2
7	CHECK VALVE	26641-092	1
8	AIR COMPRESSOR ASSY	46181-907	1
9	* SYNCHRONOUS BELT	24186-008	1
10	BELT GUARD ASSY	42351-326 24150	1
11	HEX HD CAPSCREW	B0402 15991	2
12	LOCK WASHER	J04 15991	2
13	FLAT WASHER	K04 15991	2
14	HOSE BARB FITTING	26523-386	1
15	HOSE CLAMP	26518-641	1
16	HOSE CLAMP	26518-642	1
17	HEX HD CAPSCREW	B0610 15991	4
18	LOCK WASHER	J06 15991	4
19	FLAT WASHER	K06 15991	4
20	SPACER	31141-034 15000	4
21	3/16" ID x 24" LG. HOSE	18513-301	1
22	1/2" ID x 20" LG. HOSE	18513-113	1
23	CLAMP	27111-348	1
24	SPROCKET	24271-112	1
25	BUSHING	24131-496	1
26	4" CHECK VALVE KIT	48274-003	1
	-CHECK VALVE	26642-124	1
	* --FLAPPER	26688-005	1
	* --COVER O-RING	25152-366	1
27	STUD	C1011 15991	8
28	GASKET	1676G 18000	1
29	PIPE PLUG	P04 15079	1
30	LOCK WASHER	J10 15991	8
31	HEX NUT	D10 15991	8
32	HOPPER SPOOL	38644-802 10000	1
33	* COVER PLATE GASKET	38689-037 18000	1
34	COVER PLATE	38244-021 15080	1
35	LOCK WASHER	J08 15991	2
36	HEX HD CAPSCREW	B0804 15991	2
NOT SHOWN:			
	STRAINER	2690C 24000	1
	G-R DECAL	GR-06	1

* INDICATES PARTS RECOMMENDED FOR STOCK

ILLUSTRATION

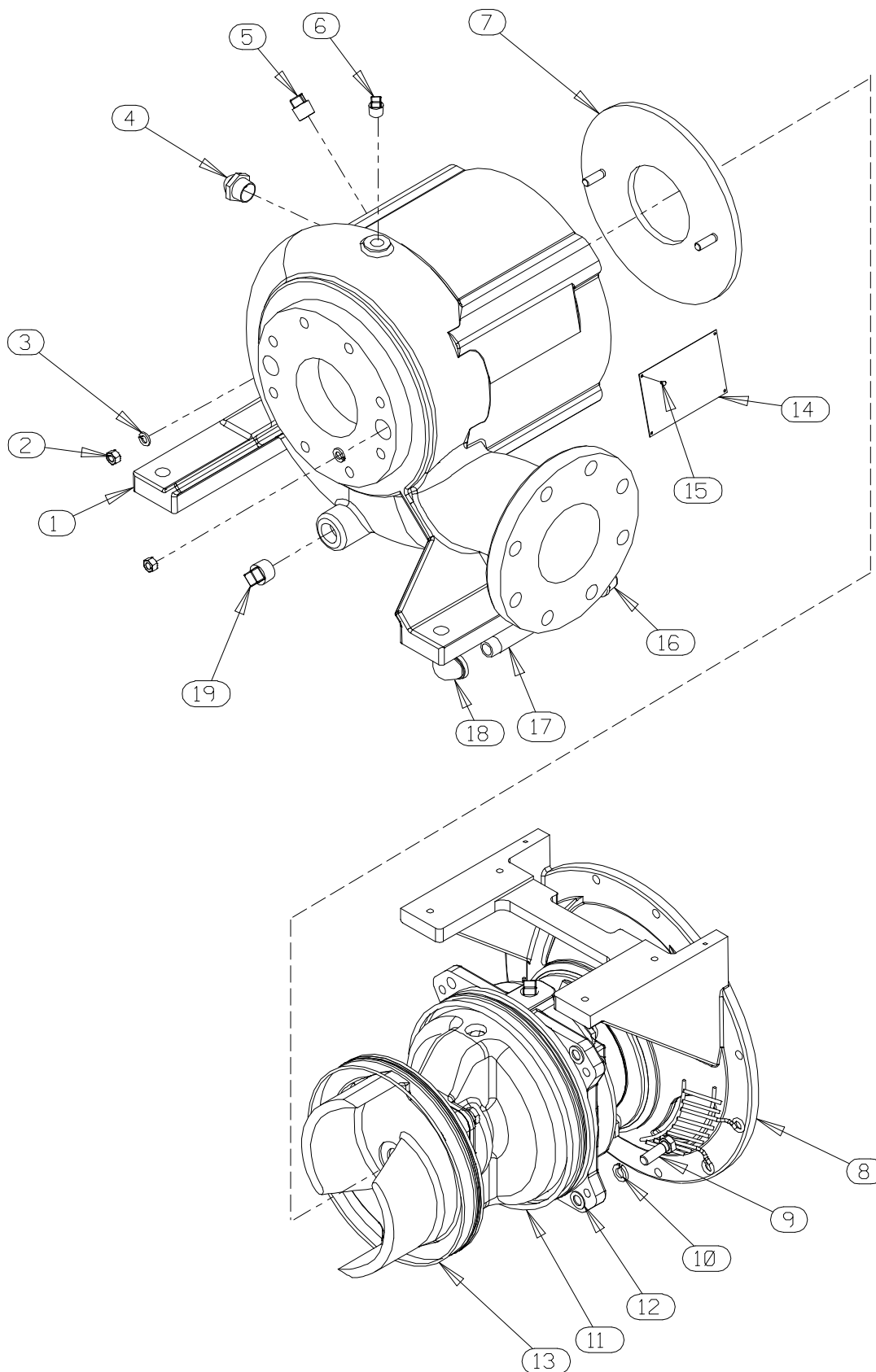


Figure 4. Pump End Assembly

PARTS LIST
Pump End Assembly

ITEM NO.	PART NAME	PART NUMBER	QTY
☞ 1	PUMP CASING	SEE NOTE BELOW	1
2	HEX NUT	D06 15991	2
3	LOCK WASHER	J06 15991	2
4	SIGHT GAUGE	S1471	1
5	PIPE PLUG	P08 15079	1
6	PIPE PLUG	P06 15079	1
7	* WEAR PLATE ASSY	10532B 15990	1
8	REPAIR ROTATING ASSY	44163-451	1
9	HEX HD CAPSCREW	B0806 15991	4
10	LOCK WASHER	J08 15991	4
11	* BEARING HOUSING O-RING	S1674	1
12	ROTATING ASSY SHIM SET	13130 17040	4
13	* SEAL PLATE O-RING	25152-273	1
14	NAME PLATE	38818-127 13000	1
15	DRIVE SCREW	BM#04-03 17000	4
16	PIPE CAP	V08 15079	1
17	PIPE NIPPLE	T0822 15079	1
18	STREET ELBOW	RS08 11999	1
19	PIPE PLUG	P12 15079	1
NOT SHOWN:			
	OIL LEVEL DECAL	38816-123	1
	SUCTION STICKER	6588AG	1
	ROTATION DECAL	2613M	1
	WARNING DECAL	2613FE	1
	DISCHARGE STICKER	6588BJ	1
	LUBE DECAL	11421A	1
	DRIVE ASSEMBLY	44162-160	1
☞	INCLUDED W/REPAIR PUMP CASING ASSY	46474-354	1

* INDICATES PARTS RECOMMENDED FOR STOCK

ILLUSTRATION

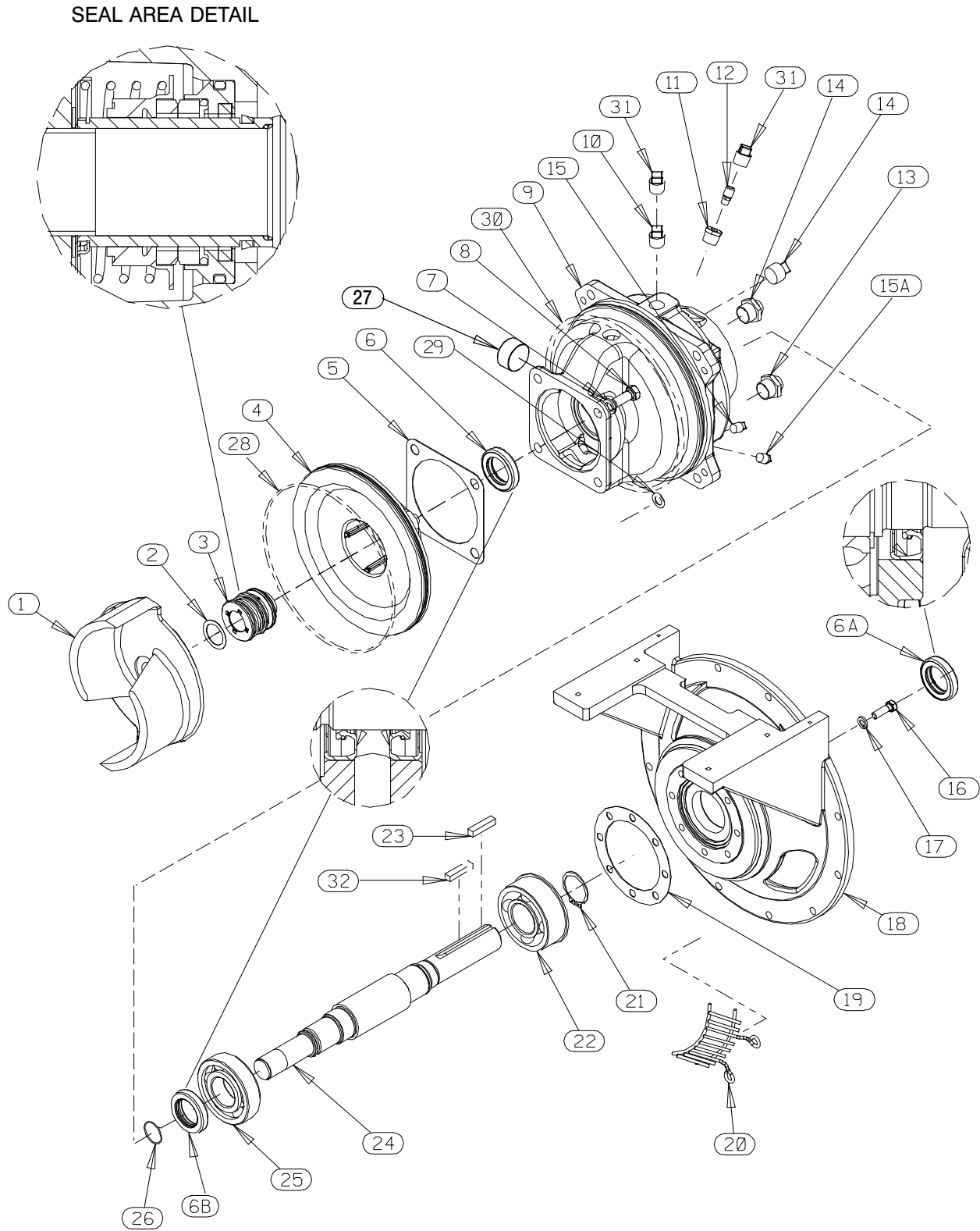


Figure 5. Repair Rotating Assembly

PARTS LIST
Repair Rotating Assembly

ITEM NO.	PART NAME	PART NUMBER	QTY
1	IMPELLER	10528 11010	1
2	* IMPELLER ADJ SHIM SET	37J 17090	REF
3	* CARTRIDGE SEAL ASSEMBLY	46513-151	1
4	SEAL PLATE	38272-234 10010	1
5	* SEAL PLATE GASKET	10959G 20000	1
6	* OIL SEAL	S1352	1
6A	* OIL SEAL	S1352	1
6B	* OIL SEAL	S1352	1
7	LOCK WASHER	J08 15991	4
8	HEX HD CAPSCREW	B0805-1/2 15991	4
9	BEARING HOUSING	38251-423 10000	1
10	VENTED PIPE PLUG	4823A 15079	1
11	REDUCER PIPE BUSHING	AP0802 15079	1
12	AIR VENT	S1530	1
13	SIGHT GAUGE	S1471	1
13A	SIGHT GAUGE	S1471	1
14	PIPE PLUG	P12 15079	1
15	PIPE PLUG	P04 15079	1
15A	PIPE PLUG	P04 15079	1
16	HEX HD CAPSCREW	21632-934	8
17	LOCK WASHER	J06 15991	8
18	MOUNTING FLANGE	38545-013 11010	1
19	* GASKET	38683-275 18000	1
20	INTERMEDIATE GUARD	42381-509 24152	2
21	RETAINING RING	S442	1
22	* BALL BEARING	S375	1
23	* SHAFT KEY	N0607 15990	1
24	* IMPELLER SHAFT	38514-822	1
25	* BALL BEARING	S1088	1
26	SHAFT SLEEVE O-RING	25154-022	REF
27	SOC HD PIPE PLUG	PC20 10009	1
28	* SEAL PLATE O-RING	25152-273	1
29	ROTATING ASSY ADJ SHIM SET	13130 17040	4
30	* BEARING HOUSING O-RING	S1674	1
31	SHIPPING PLUG	11495B 15079	2
32	* AIR COMPRESSOR DRIVE KEY	N0607 15990	1
NOT SHOWN:	INSTRUCTION TAG	6588U	1

* INDICATES PARTS RECOMMENDED FOR STOCK

ILLUSTRATION

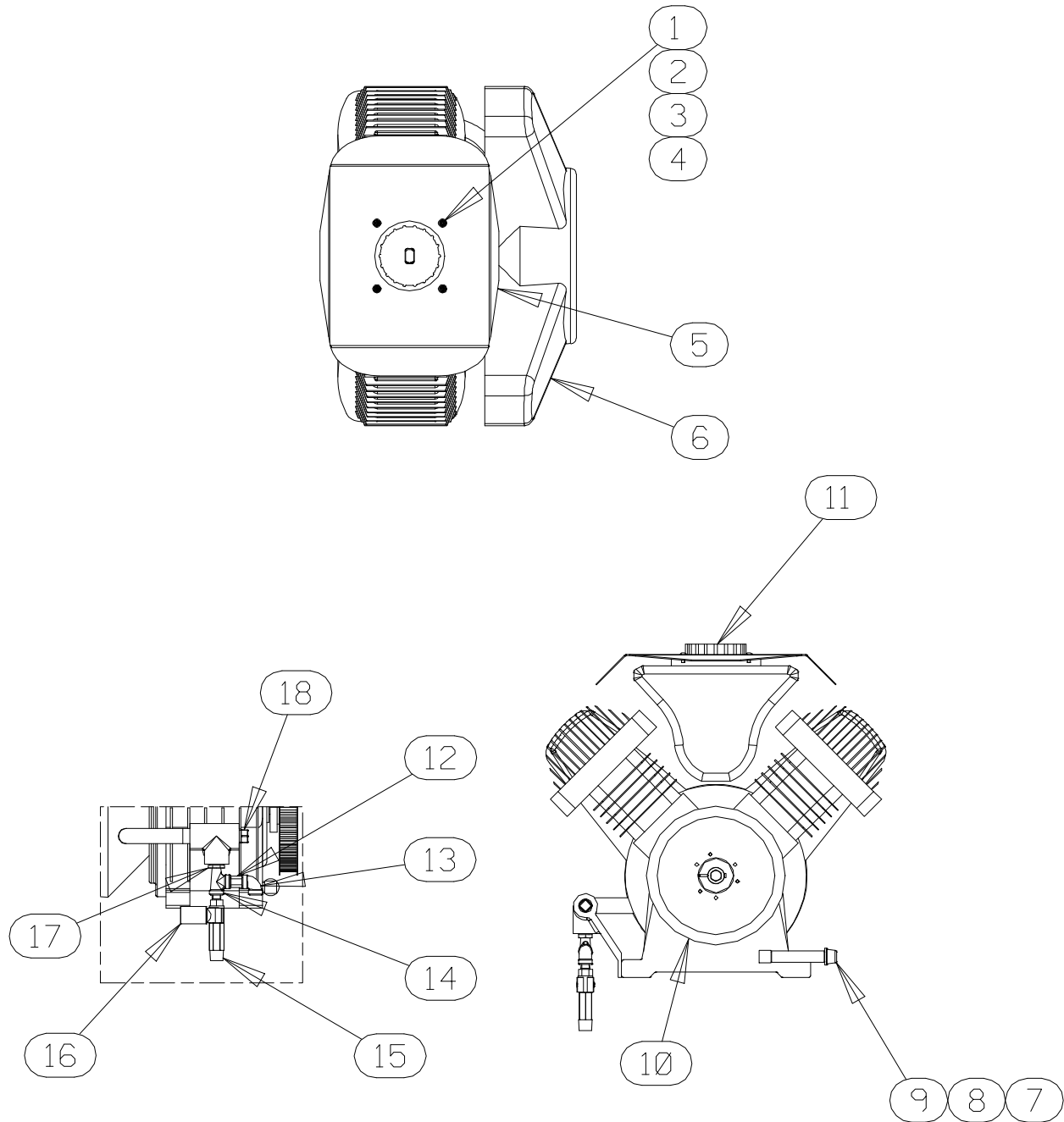


Figure 6. Air Compressor Assembly

PARTS LIST
Air Compressor Assembly

ITEM NO.	PART NAME	PART NUMBER	QTY
1	FLAT WASHER	K#10 15991	4
2	MACHINE SCREW	X#10-02 15991	4
3	LOCK WASHER	J#10 15991	4
4	HEX NUT	D#10 15991	4
5	AIR COMPRESSOR COVER	38354-043 15120	1
6	AIR COMPRESSOR	26813-112	1
7	90° ADAPTOR	25412-003	1
8	PIPE NIPPLE	T0616 15079	1
9	PIPE CAP	V06 15079	1
10	PULLEY ASSY	44112-003	1
11	KNOB	38429-501 19550	1
12	PRESSURE RELIEF VALVE	26662-029	1
13	PIPE ELBOW	R04 11999	1
14	SERVICE TEE	US04 11999	1
15	VENTURI	26817-003	1
16	PIPE COUPLING	AE08 15079	1
17	REDUCER PIPE BUSHING	AP0804 15079	1
18	PIPE PLUG	P08 15079	1
19	CLOSED PIPE NIPPLE	T06 15079	1
20	PIPE COUPLING	AE06 15079	1
NOT SHOWN:			
	WARNING DECAL	38817-101	1
	OIL FILL DECAL	38816-194	1
	* AIR COMPRESSOR DRIVE KEY	24113-601	REF

* INDICATES PARTS RECOMMENDED FOR STOCK

ILLUSTRATION

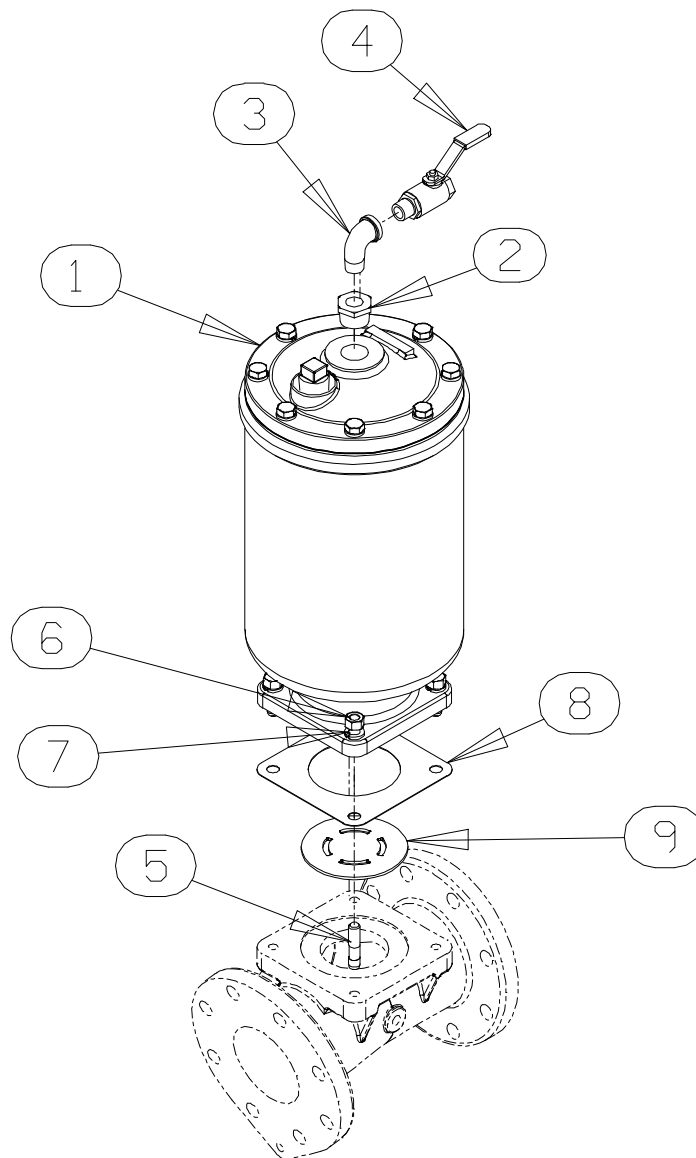


Figure 7. Priming Chamber Kit

PARTS LIST

ITEM NO.	PART NAME	PART NUMBER	QTY
1	PRIMING CHAMBER ASSY	46112-709	1
2	REDUCER PIPE BUSHING	AP1608 15070	1
3	STREET ELBOW	RS08 11999	1
4	BALL VALVE	26631-052	1
5	STUD	C0809 15991	4
6	HEX NUT	D08 15991	4
7	LOCK WASHER	J08 15991	4
8	* GASKET	38687-053 19060	1
9	BAFFLE	31113-011 17000	1

* INDICATES PARTS RECOMMENDED FOR STOCK

ILLUSTRATION

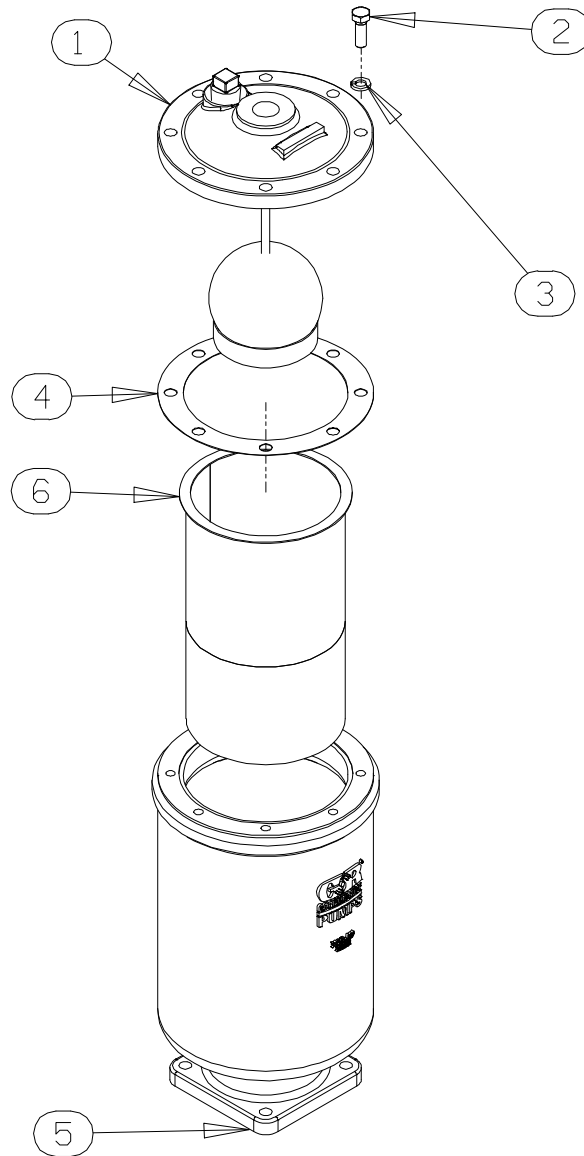


Figure 8. Priming Chamber Assembly

PARTS LIST

ITEM NO.	PART NAME	PART NUMBER	QTY
1	PRIMING VALVE	26664-007	1
	-ORIFICE BUTTON	26688-021	1
2	HEX HD CAPSCREW	B0806 15991	8
3	LOCKWASHER	J08 15991	8
4	* PRIMING VALVE GASKET	38683-657 19060	1
6	PRIMING CHAMBER	38343-020 10000	1
6	STRAINER ASSY	46641-222 17000	1

* INDICATES PARTS RECOMMENDED FOR STOCK

ILLUSTRATION

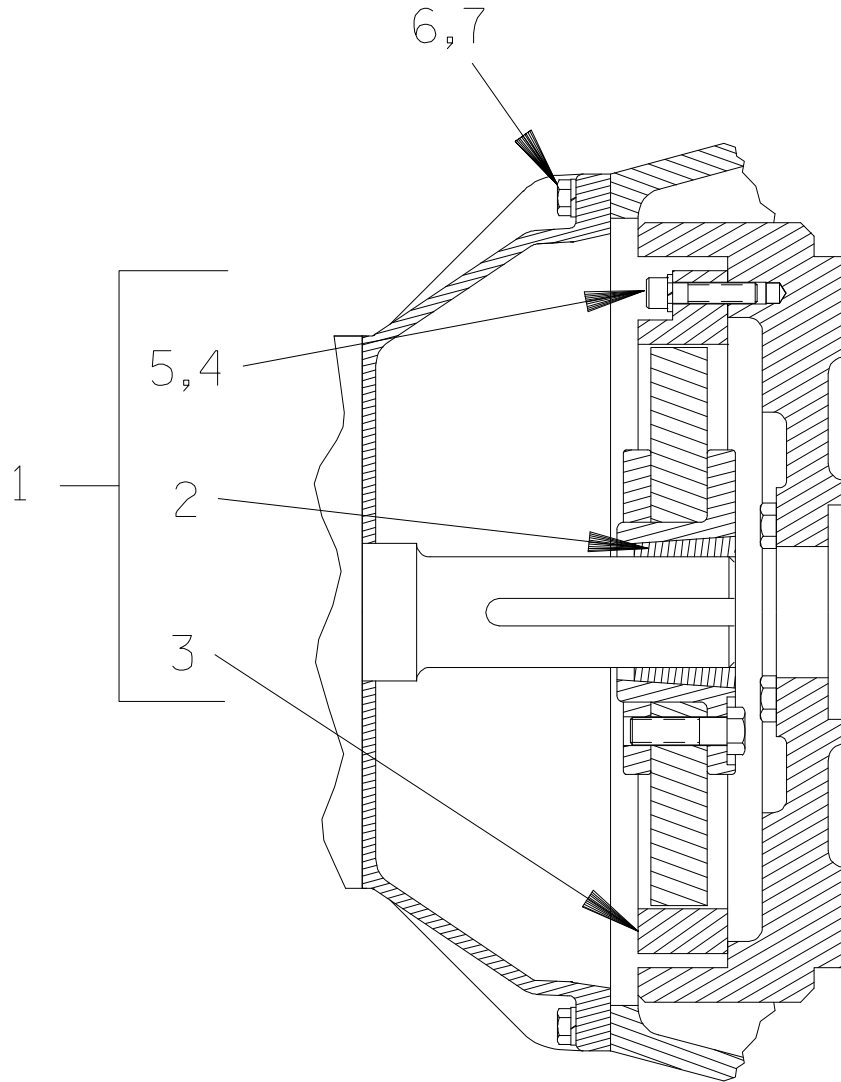




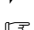



Figure 9. Drive Assembly

PARTS LIST

ITEM NO.	PART NAME	PART NUMBER	QTY
1	COUPLING KIT	48112-005	1
2	-BUSHING	24131-496	1
3	-COUPLING ASSEMBLY	24391-105	1
4	LOCK WASHER	21171-536	8
5	 SOCKET HEAD CAPSCREW	BD0606-1/2 15991	8
5	 SOCKET HEAD CAPSCREW	22644-220	8
6	 HEX HD CAPSCREW	B0605 15991	12
6	 HEX HD CAPSCREW	22645-164	12
7	 LOCK WASHER	J06 15991	12
7	 LOCK WASHER	21171-511	12

 USE FOR SAE APPLICATIONS

 USE FOR METRIC APPLICATIONS