

ILLUSTRATION

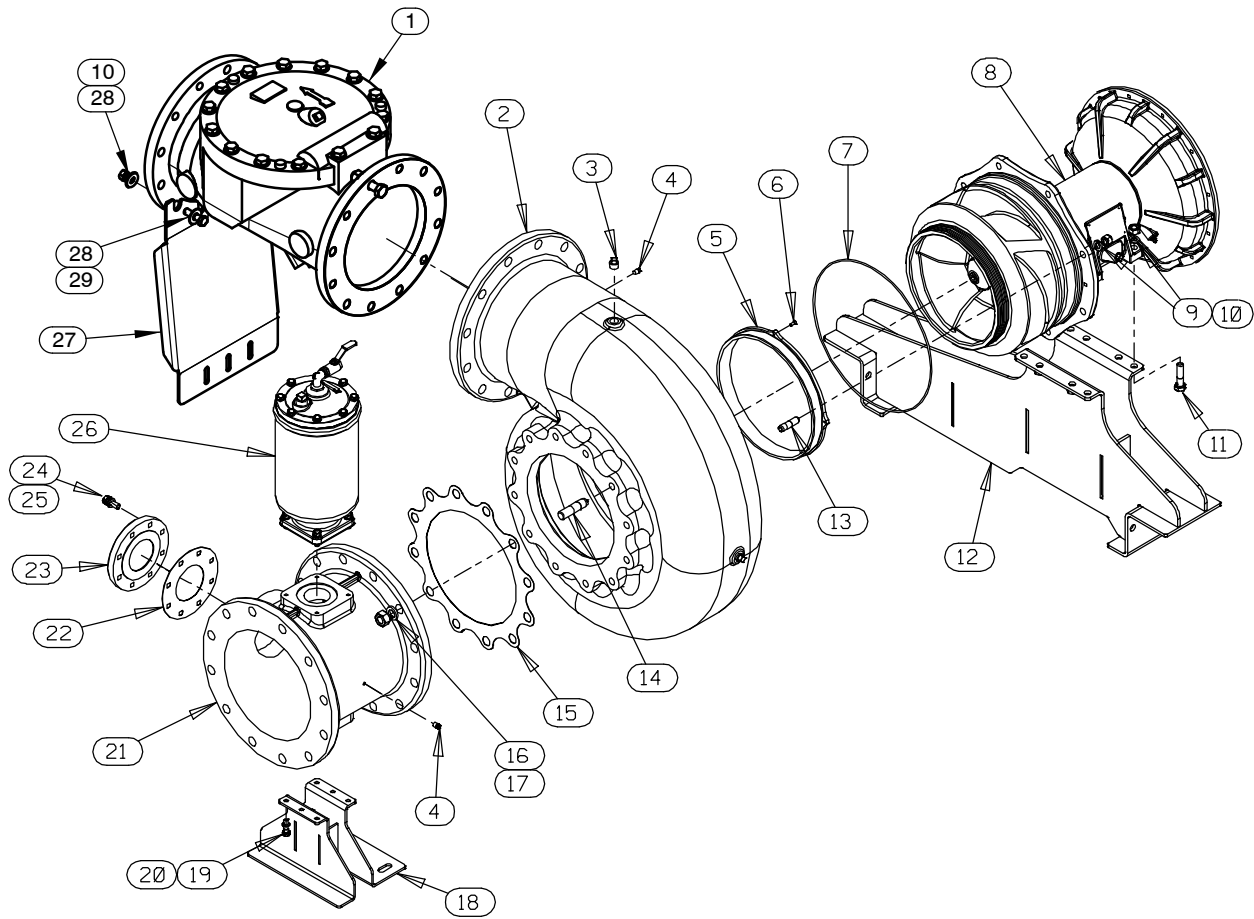


Figure 2. Pump End Assembly

## PARTS LIST

### Pump End Assembly

ITEM NO.	PART NAME	PART NUMBER	QTY
1	CHECK VALVE KIT 14"	48274-009	1
	-14" CHECK VALVE	26642-128	1
	* -CHECK VALVE COVER GASKET	26688-016	1
	* -CHECK VALVE FLAPPER	26688-015	1
	* -CHECK VALVE FLANGE GASKET	25113-041	1
☞ 2	PUMP CASING	SEE NOTE BELOW	1
☞ 3	PIPE PLUG	P12 15079	3
☞ 4	PIPE PLUG	P04 15079	2
☞ 5	* WEAR RING	38691-640 11010	1
6	FLAT HEAD CAP SCREW	F0403 17090	4
7	* O-RING	25152-387	1
8	REPAIR ROTATING ASSEMBLY	44163-702	1
9	LOCK WASHER	J12 15991	12
10	HEX NUT	D12 15991	14
11	HEX HEAD CAP SCREW	B1212 15991	4
12	SUPPORT ASSEMBLY	41888-372 24150	1
☞ 13	STUD	C1211 15991	8
☞ 14	STUD	C1616 15991	12
15	GASKET	38685-810 18000	1
16	LOCK WASHER	J16 15991	12
17	HEX NUT	D16 15991	12
18	SUCTION SUPPORT ASSEMBLY	41888-371 24150	1
19	HEX HEAD CAP SCREW	B0807 15991	4
20	LOCK WASHER	J08 15991	4
21	14" SPOOL FLANGE	38642-623 10000	1
22	* GASKET	25113-034	1
23	4" BLIND FLANGE ASSEMBLY	42111-358	1
24	LOCK WASHER	J10 15991	8
25	HEX HEAD CAP SCREW	B1007 15991	8
26	PRIMING CHAMBER KIT	48275-005	1
27	SUPPORT BRACKET	34837-006 15080	1
28	FLAT WASHER	K12 15991	4
29	HEX HEAD CAP SCREW	B1211 15991	2
NOT SHOWN:			
	NAMEPLATE BLANK	38819-002 13000	1
	DRIVE SCREW	BM#04-03 17000	4
	INSTRUCTION TAG	38817-104	1
	DISCHARGE STICKER	6588BJ	1
	SUCTION STICKER	6588AG	1
	WARNING DECAL	2613FE	1
	G-R DECAL	GR-06	1
	PRIME AIRE PLUS DECAL	38812-099	1
☞	INCLUDED W/REPAIR PUMP CASING ASSY	46474-361	1

\* INDICATES PARTS RECOMMENDED FOR STOCK

ILLUSTRATION

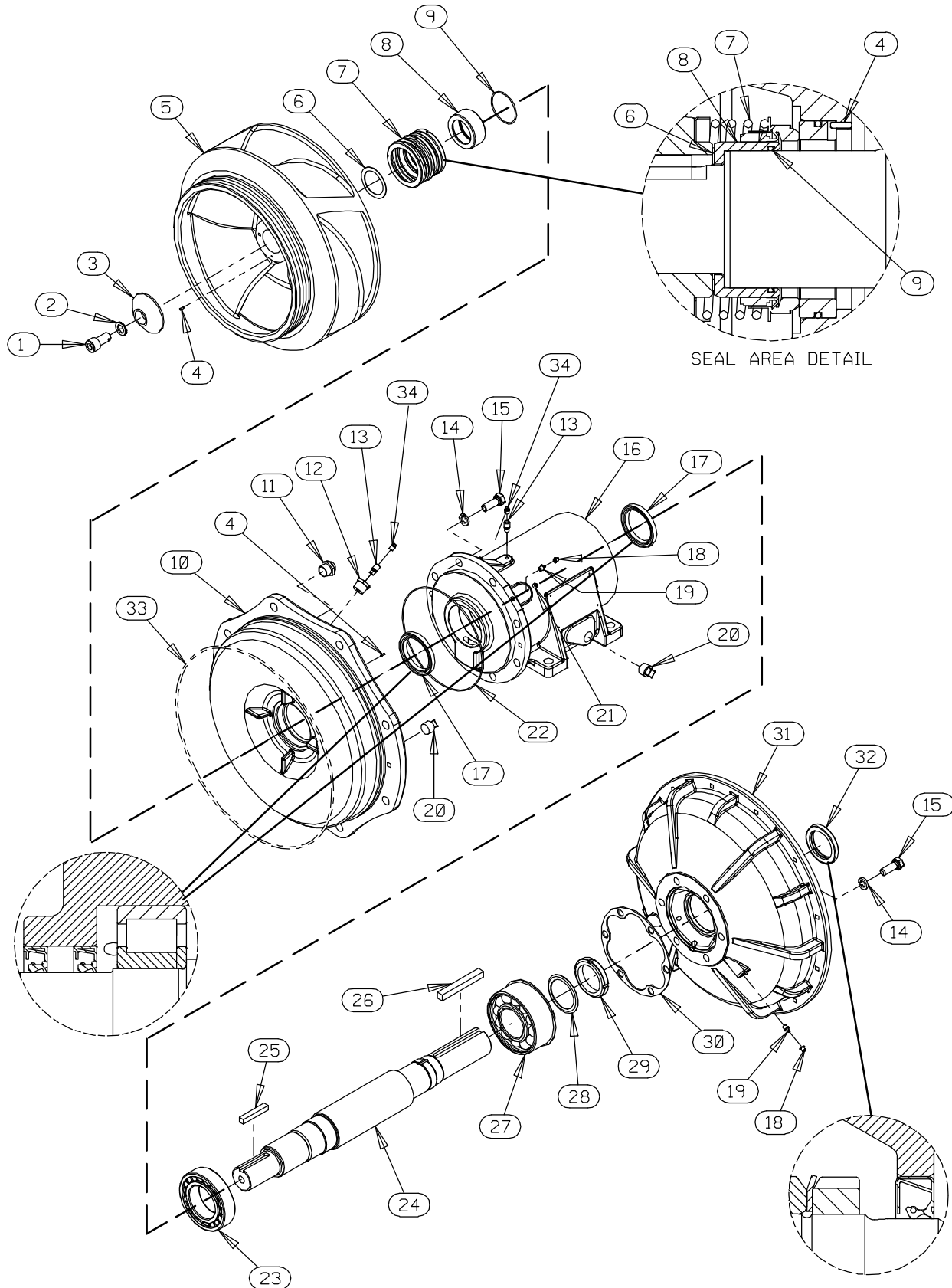


Figure 5. Repair Rotating Assembly

**PARTS LIST**  
**Repair Rotating Assembly**

ITEM NO.	PART NAME	PART NUMBER	QTY
1	SOCKET HEAD CAP SCREW	DM1206 15991	1
2	WASHER NORD-LOCK 3/4"	21177-224	1
3	IMPELLER WASHER	31167-041 17000	1
4	ROLL PIN	S2197	2
5	IMPELLER	38614-803 11010	1
6	* SHIM SET	48261-033	1
7	* 3.25" MECH SEAL	25285-822	1
8	* SHAFT SLEEVE	31163-022 17000	1
9	* O-RING	25152-150	1
10	SEAL PLATE	38272-722 11010	1
11	SIGHT GAUGE	S1471	2
12	REDUCER PIPE BUSHING	AP1202 15079	1
13	AIR VENT	S1530	2
14	LOCK WASHER	J10 15991	14
15	HEX HEAD CAP SCREW	B1007 15991	14
16	PEDESTAL	38257-212 10000	1
17	* LIP SEAL	25227-856	2
18	CAP PLUG	25141-151	4
19	LUBE FITTING	S186	4
20	PIPE PLUG	P12 15079	3
21	SOCKET HEAD PIPE PLUG	PC02 15079	2
22	* O-RING	25152-177	1
23	* ROLLER BEARING	23535-001	1
24	* IMPELLER SHAFT	38512-544 1600X	1
25	* KEY	N0812 15990	1
26	* KEY	N1020 15990	1
27	* BEARING	23422-417	1
28	LOCKING TAB COLLAR	23962-515	1
29	BEARING LOCKNUT	23962-015	1
30	BEARING CAP GASKET	38683-664 19060	1
31	DRIVE FLANGE - SAE 1	38545-029 10000	1
32	* OIL SEAL	25258-845	1
33	* O-RING	25152-387	1
34	SHIPPING PLUG	11495C 15079	2
NOT SHOWN:			
	INSTRUCTION TAG	6588U	1
	LUBRICATION DECAL	38817-103	1

\* INDICATES PARTS RECOMMENDED FOR STOCK

ILLUSTRATION

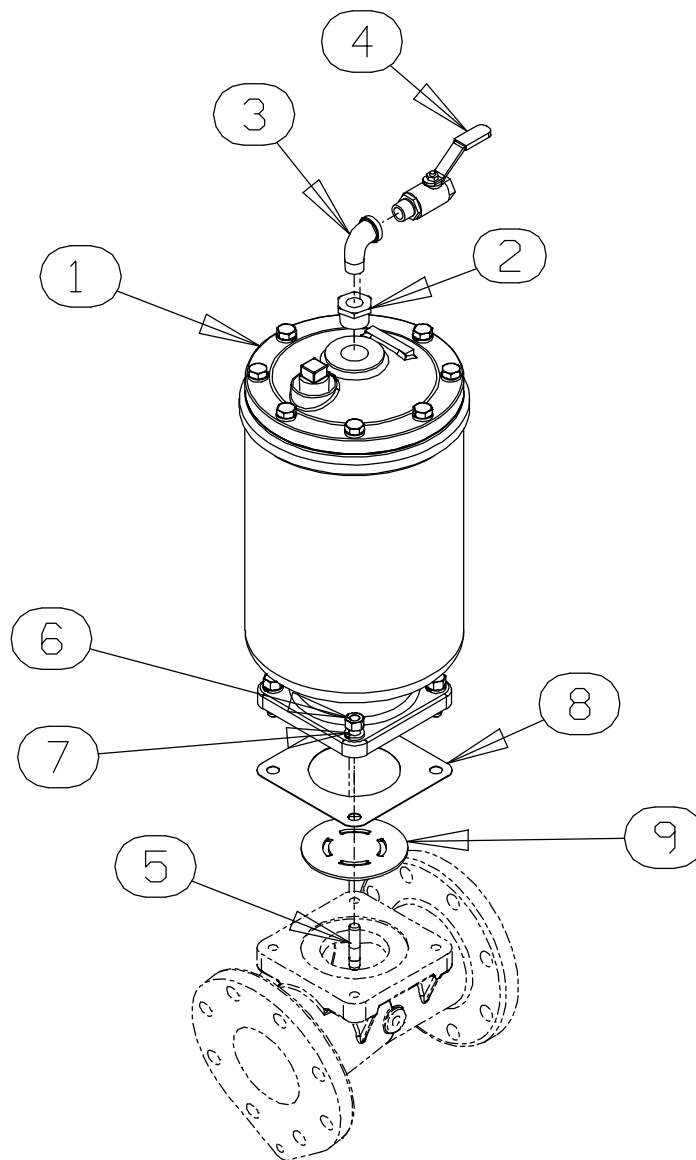


Figure 6. Priming Chamber Kit

PARTS LIST

ITEM NO.	PART NAME	PART NUMBER	QTY
1	PRIMING CHAMBER ASSY	46112-709	1
2	PIPE BUSHING	AP1608 15070	1
3	STREET ELBOW	RS08 11999	1
4	BALL VALVE	26631-052	1
5	STUD	C0809 15991	4
6	HEX NUT	D08 15991	4
7	LOCK WASHER	J08 15991	4
8	* GASKET	38687-053 19060	1
9	BAFFLE	31113-011 17000	1

\* INDICATES PARTS RECOMMENDED FOR STOCK

## ILLUSTRATION

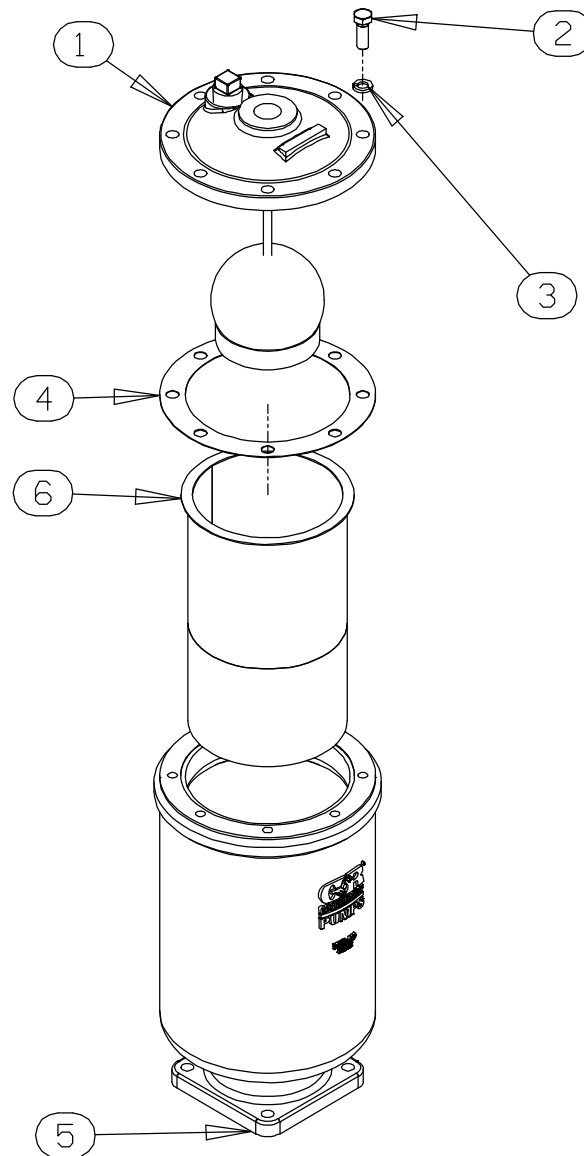


Figure 7. Priming Chamber Assembly

## PARTS LIST

ITEM NO.	PART NAME	PART NUMBER	QTY
1	PRIMING VALVE	26664-007	1
	* -ORIFICE BUTTON	26688-021	1
2	HEX HD CAPSCREW	B0806 15991	8
3	LOCKWASHER	J08 15991	8
4	* PRIMING VALVE GASKET	38683-657 19060	1
5	PRIMING CHAMBER	38343-020 10000	1
6	STRAINER ASSY	46641-222 17000	1

\* INDICATES PARTS RECOMMENDED FOR STOCK