

ILLUSTRATION

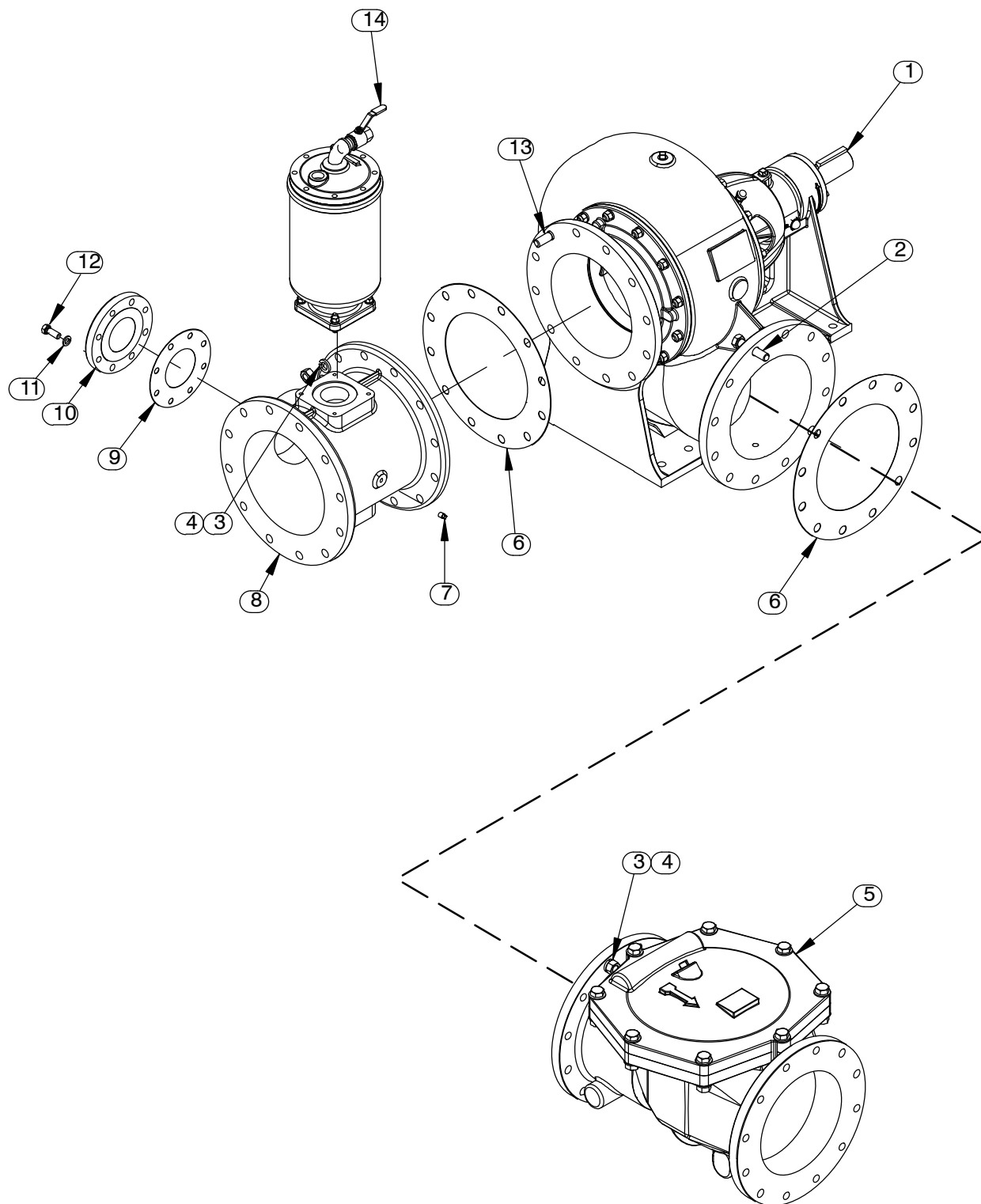


Figure 4. Pump Assembly

PARTS LIST
Pump Model Assembly

ITEM NO.	PART NAME	PART NUMBER	QTY
1	PUMP	46133-640	1
2	HEX HEAD CAP SCREW	B1416 15991	12
3	LOCK WASHER	J14 15991	24
4	HEX NUT	D14 15991	24
5	CHECK VALVE 12"	26642-128	1
	-FLAPPER	26688-003	1
	* -GASKET	26688-004	1
	* -O-RING	25152-469	1
6	* FLANGE GASKET	4991G 18000	2
7	PIPE PLUG	P04 15079	1
8	12" SPOOL	38642-622 10000	1
9	* BLIND FLANGE GASKET	25113-034	1
10	4" BLIND FLANGE ASSEMBLY	42111-358	1
11	LOCK WASHER	J10 15991	8
12	HEX HEAD CAP SCREW	B1007 15991	8
13	HEX HEAD CAP SCREW	B1413 15991	12
14	PRIMING CHAMBER KIT	48275-006	1

* INDICATES PARTS RECOMMENDED FOR STOCK

ILLUSTRATION

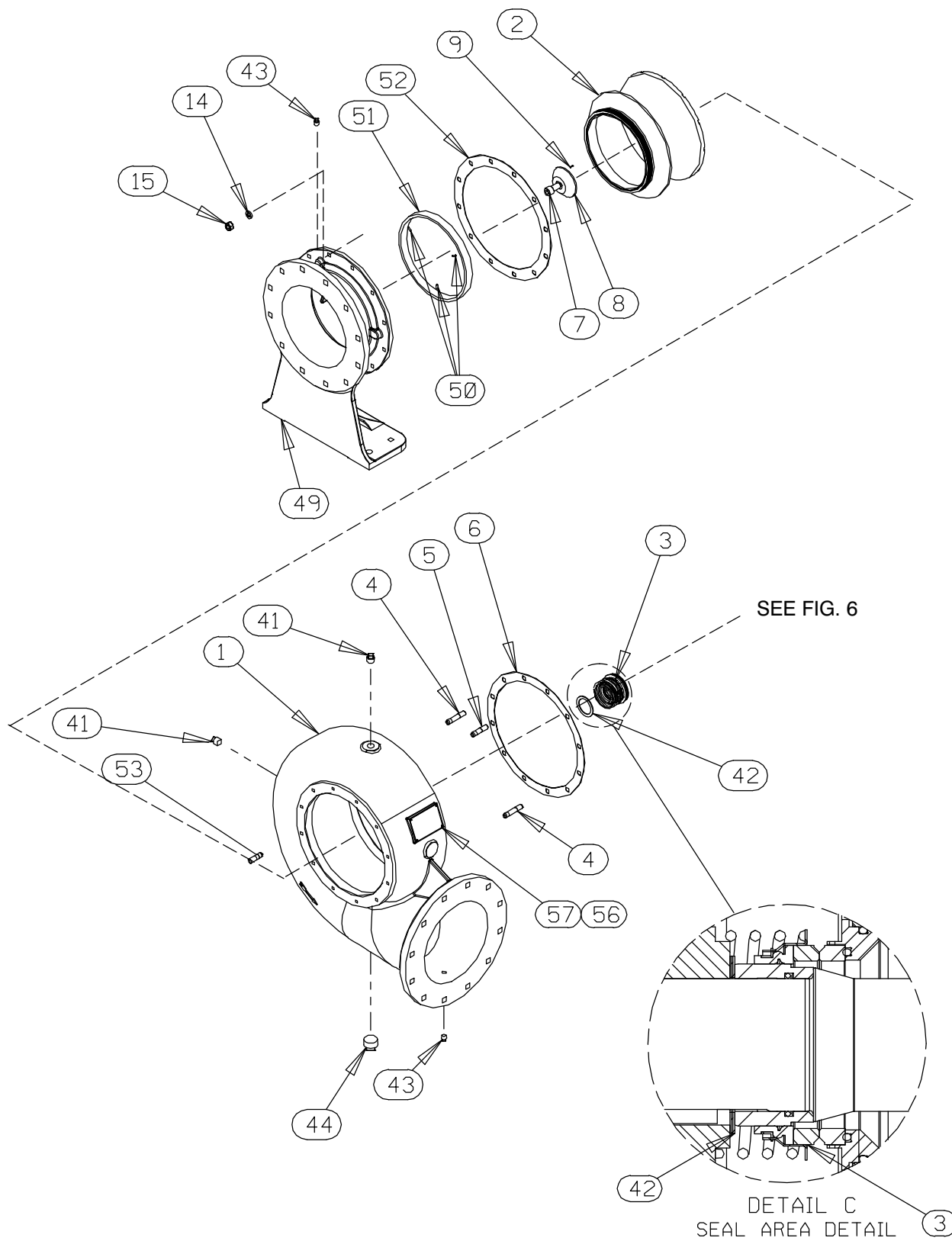


Figure 5. Pump Model Assembly

PARTS LIST

Pump Model Assembly

ITEM NO.	PART NAME	PART NUMBER	QTY	ITEM NO.	PART NAME	PART NUMBER	QTY
☞ 1	PUMP CASING	38219-305 10010	1	34 *	ROLLER BEARING	23528-005	1
2 *	IMP/WEAR RING ASSY	46151-022 24110	1	35	BEARING CAP	38322-425 10010	1
3 *	SEAL ASSY	46512-109	1	36	AIR VENT	S1703	1
☞ 4	STUD	C1013 15991	3	37 *	BEARING CAP O-RING	25151-266	1
☞ 5	STUD	C1011 15991	9	38	PIPE CPLG 3/8	AE06 15079	1
6 *	GASKET	38674-434 18000	1	39	PIPE NIPPLE	T0608 15079	1
7 *	SOCKET HD CAP SCREW	BD1206 15990	1	40	SEAL PLATE	38272-717 10000	1
8 *	IMPELLER WASHER	31167-012 15030	1	☞41	PIPE PLUG	P12 15079	2
9 *	ROLL PIN	S2197	1	42	IMP ADJ SHIM SET	48261-033	REF
10	HOSE CLAMP	26518-642	2	43	PIPE PLUG	P06 15079	2
11	MALE CONNECTOR	26523-409	2	☞44	PIPE PLUG	P24 10009	1
12	BTTLE OILER BRKT ASSY	41881-811 24150	1	45	SEAL PLATE COVER	38242-708 10000	1
13	FLAT WASHER	K10 15991	1	46	HEX HEAD CAP SCREW	B0503-1/2 15991	6
14	LOCK WASHER	J10 15991	22	47	LOCK WASHER	J05 15991	6
15	HEX NUT	D10 15991	24	48	.38 ID x 11" LG HOSE	18513-054	1
16	MACHINE SCREW	X0405 15991	2	49	SUCTION HEAD	4180 10010	1
17	LOCK WASHER	J04 15991	2	50	SPIRAL PIN	21137-123	3
18	SIGHT GAUGE	S1471	2	51 *	WEAR RING	4181A 14000	1
19	VENTED PIPE PLUG	38649-009 15079	1	52 *	GASKET	4180G 18000	1
20	PEDESTAL	38257-520 10000	1	☞53	STUD	C1009 15991	12
21	PIPE PLUG	P04 15079	1	54	BOTTLE OILER	26713-004	1
22	HEX HEAD CAP SCREW	B0605 15991	12	55	SNAP RING	24124-057	1
23 *	OIL SEAL	25258-845	3	56	DRIVE SCREW	BM#04-03 17000	4
24	BEARING CAP	38322-429 10000	1	57	NAMEPLATE BLANK	38819-002 13000	1
25 *	O-RING	25152-249	1	NOT SHOWN:			
26	SHIM SET	48261-055	1		SUCTION STICKER	6588AG	1
27	BEARING LOCKNUT	23962-015	1		ROTATION DECAL	2613M	1
28	BEARING LOCK WASHER	23962-515	1		G-R DECAL	GR-06	1
29 *	BEARING CAP GASKET	4184G 18000	1		WARNING DECAL	2613FE	1
30 *	BALL BEARING	23413-015	2		INSTRUCTION TAG	38817-024	1
31 *	SHAFT KEY	N1016 15990	1		LUBRICATION DECAL	38816-079	1
32 *	IMPELLER SHAFT	38512-522 17040	1		INSTRUCTION TAG	38817-011	1
33 *	IMPELLER KEY	N0809 15990	1		OIL LEVEL DECAL	38816-123	1
					DISCHARGE STICKER	6588BJ	1

* INDICATES PARTS RECOMMENDED FOR STOCK

☞ INCLUDED WITH REPAIR 46474-902 1
PUMP CASING ASSY

ILLUSTRATION

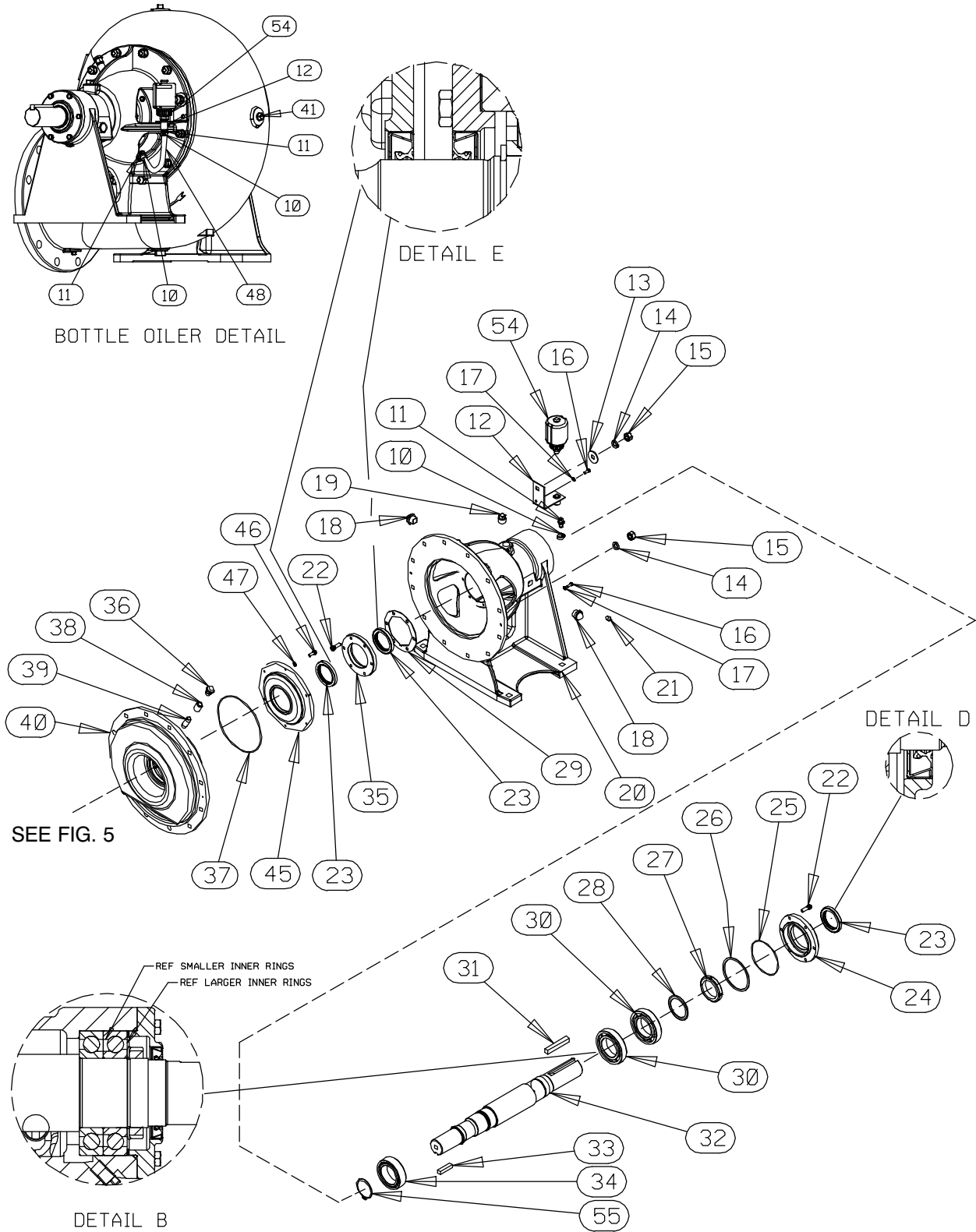


Figure 6. Pump Model Assembly (cont'd)

PARTS LIST
Pump Model Assembly

ITEM NO.	PART NAME	PART NUMBER	QTY	ITEM NO.	PART NAME	PART NUMBER	QTY
☞ 1	PUMP CASING	38219-305 10010	1	34 *	ROLLER BEARING	23528-005	1
2 *	IMP/WEAR RING ASSY	46151-022 24110	1	35	BEARING CAP	38322-425 10010	1
3 *	SEAL ASSY	46512-109	1	36	AIR VENT	S1703	1
☞ 4	STUD	C1013 15991	3	37 *	BEARING CAP O-RING	25151-266	1
☞ 5	STUD	C1011 15991	9	38	PIPE CPLG 3/8	AE06 15079	1
6 *	GASKET	38674-434 18000	1	39	PIPE NIPPLE	T0608 15079	1
7 *	SOCKET HD CAP SCREW	BD1206 15990	1	40	SEAL PLATE	38272-717 10000	1
8 *	IMPELLER WASHER	31167-012 15030	1	☞41	PIPE PLUG	P12 15079	2
9 *	ROLL PIN	S2197	1	42	IMP ADJ SHIM SET	48261-033	REF
10	HOSE CLAMP	26518-642	2	43	PIPE PLUG	P06 15079	2
11	MALE CONNECTOR	26523-409	2	☞44	PIPE PLUG	P24 10009	1
12	BTTLE OILER BRKT ASSY	41881-811 24150	1	45	SEAL PLATE COVER	38242-708 10000	1
13	FLAT WASHER	K10 15991	1	46	HEX HEAD CAP SCREW	B0503-1/2 15991	6
14	LOCK WASHER	J10 15991	22	47	LOCK WASHER	J05 15991	6
15	HEX NUT	D10 15991	24	48	.38 ID x 11" LG HOSE	18513-054	1
16	MACHINE SCREW	X0405 15991	2	49	SUCTION HEAD	4180 10010	1
17	LOCK WASHER	J04 15991	2	50	SPIRAL PIN	21137-123	3
18	SIGHT GAUGE	S1471	2	51 *	WEAR RING	4181A 14000	1
19	VENTED PIPE PLUG	38649-009 15079	1	52 *	GASKET	4180G 18000	1
20	PEDESTAL	38257-520 10000	1	☞53	STUD	C1009 15991	12
21	PIPE PLUG	P04 15079	1	54	BOTTLE OILER	26713-004	1
22	HEX HEAD CAP SCREW	B0605 15991	12	55	SNAP RING	24124-057	1
23 *	OIL SEAL	25258-845	3	56	DRIVE SCREW	BM#04-03 17000	4
24	BEARING CAP	38322-429 10000	1	57	NAMEPLATE BLANK	38819-002 13000	1
25 *	O-RING	25152-249	1	NOT SHOWN:			
26	SHIM SET	48261-055	1		SUCTION STICKER	6588AG	1
27	BEARING LOCKNUT	23962-015	1		ROTATION DECAL	2613M	1
28	BEARING LOCK WASHER	23962-515	1		G-R DECAL	GR-06	1
29 *	BEARING CAP GASKET	4184G 18000	1		WARNING DECAL	2613FE	1
30 *	BALL BEARING	23413-015	2		INSTRUCTION TAG	38817-024	1
31 *	SHAFT KEY	N1016 15990	1		LUBRICATION DECAL	38816-079	1
32 *	IMPELLER SHAFT	38512-522 17040	1		INSTRUCTION TAG	38817-011	1
33 *	IMPELLER KEY	N0809 15990	1		OIL LEVEL DECAL	38816-123	1
					DISCHARGE STICKER	6588BJ	1

* INDICATES PARTS RECOMMENDED FOR STOCK

☞ INCLUDED WITH REPAIR 46474-902 1
PUMP CASING ASSY

ILLUSTRATION

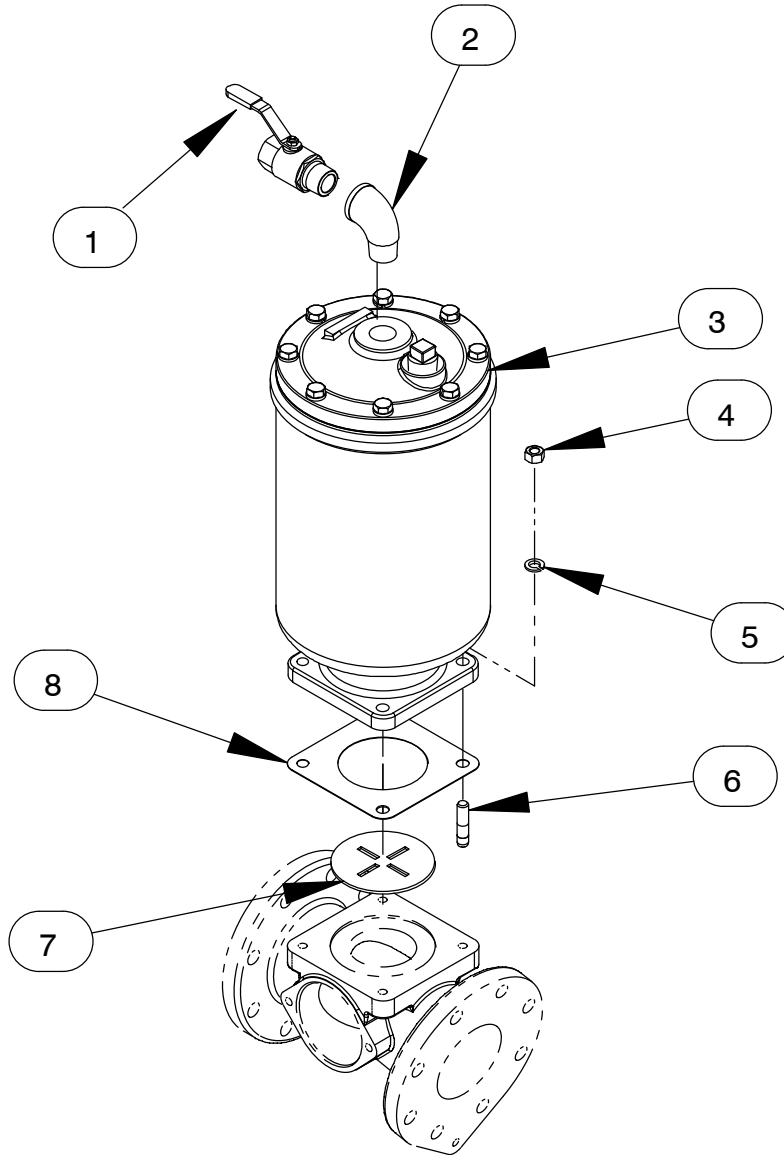


Figure 7. Priming Chamber Kit

ITEM NO.	PART NAME	PART NUMBER	QTY
1	BALL VALVE	26631-054	1
2	STREET ELBOW	RS16 11999	1
3	PRIMING CHAMBER ASSEMBLY	46112-709	1
4	HEX NUT	D08 15991	4
5	LOCK WASHER	J08 15991	4
6	STUD	C0809 15991	4
7	BAFFLE	31113-011 17000	1
8	* GASKET	38687-053 19060	1

* INDICATES PARTS RECOMMENDED FOR STOCK

ILLUSTRATION

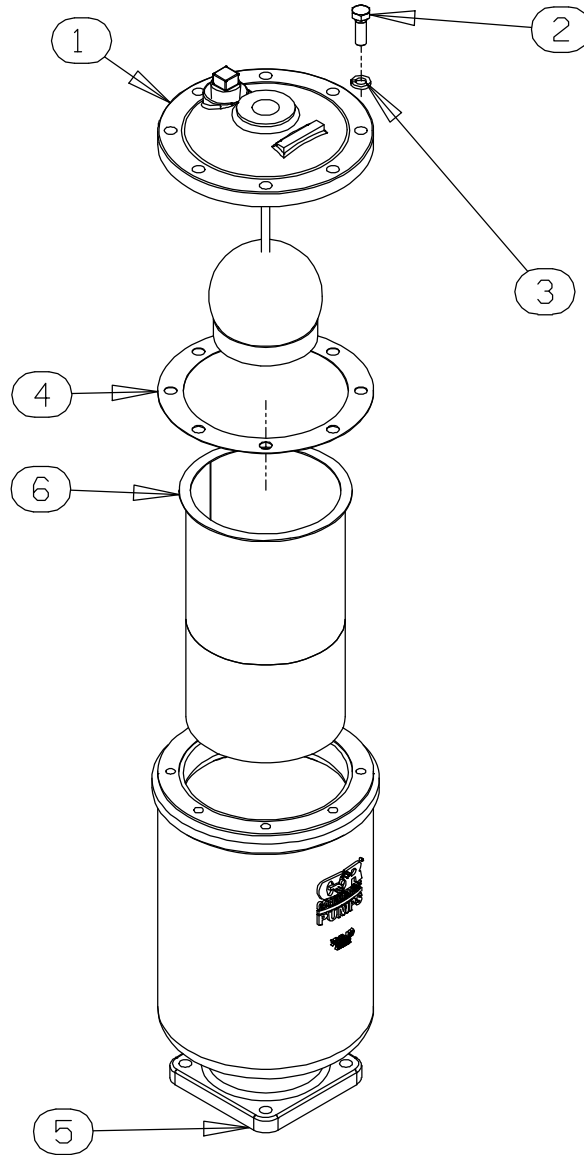


Figure 8. Priming Chamber Assembly

ITEM NO.	PART NAME	PART NUMBER	QTY
1	PRIMING VALVE -ORIFICE BUTTON	26664-007 26688-021	1 REF
2	HEX HEAD CAP SCREW	B0806 15991	8
3	LOCK WASHER	J08 15991	8
4	* PRIMING VALVE GASKET	38683-657 19060	1
5	PRIMING CHAMBER	38343-020 10000	1
6	STRAINER ASSEMBLY	46641-222 17000	1

* INDICATES PARTS RECOMMENDED FOR STOCK

ILLUSTRATION

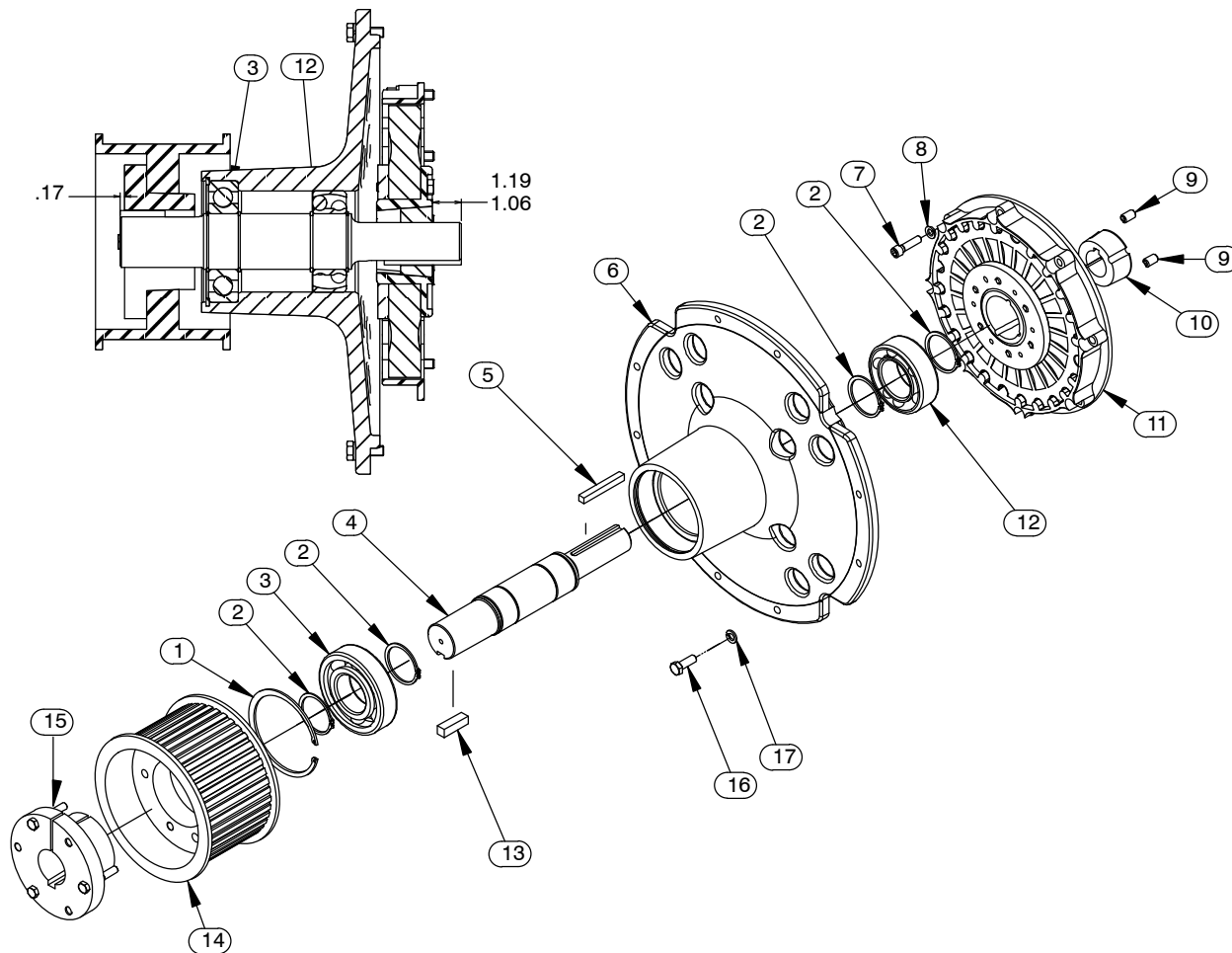


Figure 9. Engine Drive Assembly

ITEM NO.	PART NAME	PART NUMBER	QTY
1	RETAINING RING	24121-075	1
2	RETAINING RING	S215	4
3	* BALL BEARING	23282-012	1
4	* OUTPUT SHAFT	38512-051 1706H	1
5	* KEY	N0612 15990	1
6	BEARING HOUSING	38251-001 11010	1
7	SOCKET HEAD CAP SCREW	BD0606-1/2S 15990	8
8	LOCK WASHER	J06 15991	8
9	ALLEN HD SET SCREW	GA0703-1/2 15990	REF
10	BUSHING 2012 X 1-1/2	24131-496	1
11	COUPLING W/O BUSHING	24391-103	1
12	* BALL BEARING	23431-012	1
13	* KEY	N0807 15990	1
14	SPROCKET	24271-004	1
15	TAPERLOCK BUSHING	24131-526	1
16	CAP SCREW M10 X 1.5 X 30	22645-164	8
17	LOCK WASHER M10	21171-511	8

* INDICATES PARTS RECOMMENDED FOR STOCK