

ILLUSTRATION

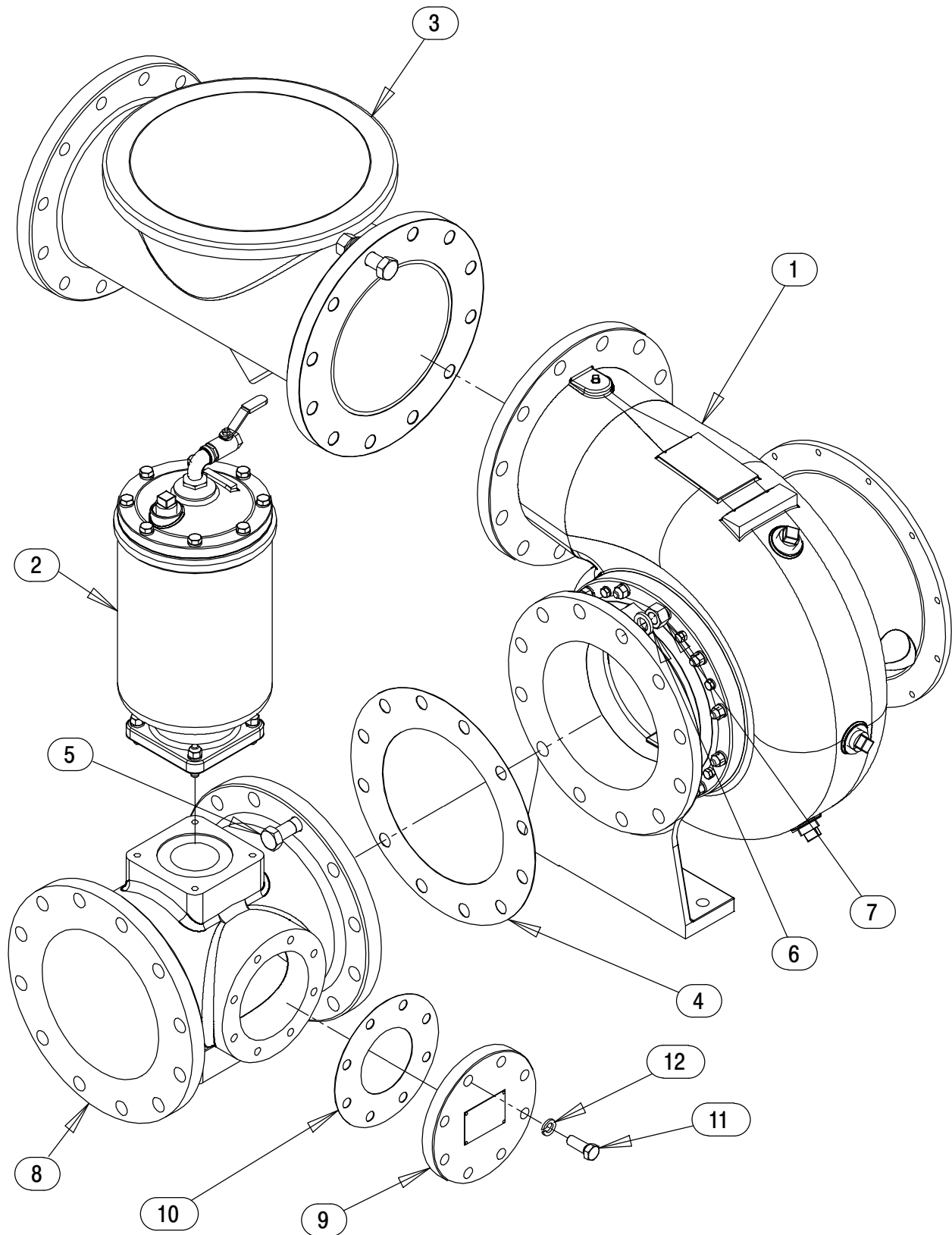


Figure 4. Pump Assembly

PARTS LIST
Pump Assembly

ITEM NO.	PART NAME	PART NUMBER	QTY
1	PUMP END ASSEMBLY	46133-633	1
2	PRIMING CHAMBER KIT	48275-005	1
3	CHECK VALVE KIT 10"	48274-007	1
	-CHECK VALVE	26642-127	1
	-FLAPPER	26688-007	1
	* -COVER GASKET	26688-008	1
	* -O-RING	25152-463	1
	* -GASKET	25113-040	1
4	* GASKET 10"	25113-040	1
5	HEX HEAD CAP SCREW	B1414 15991	12
6	LOCK WASHER	J14 15991	12
7	HEX NUT	D14 15991	12
8	10 X 10 SUCTION SPOOL	38644-816 10000	1
9	4" BLIND FLANGE ASSEMBLY	42111-358	1
10	* GASKET	25113-034	1
11	HEX HEAD CAP SCREW	B1007 15991	8
12	LOCK WASHER	J10 15991	8
NOT SHOWN:			
	10" STRAINER	46641-011 24150	1

* INDICATES PARTS RECOMMENDED FOR STOCK

ILLUSTRATION

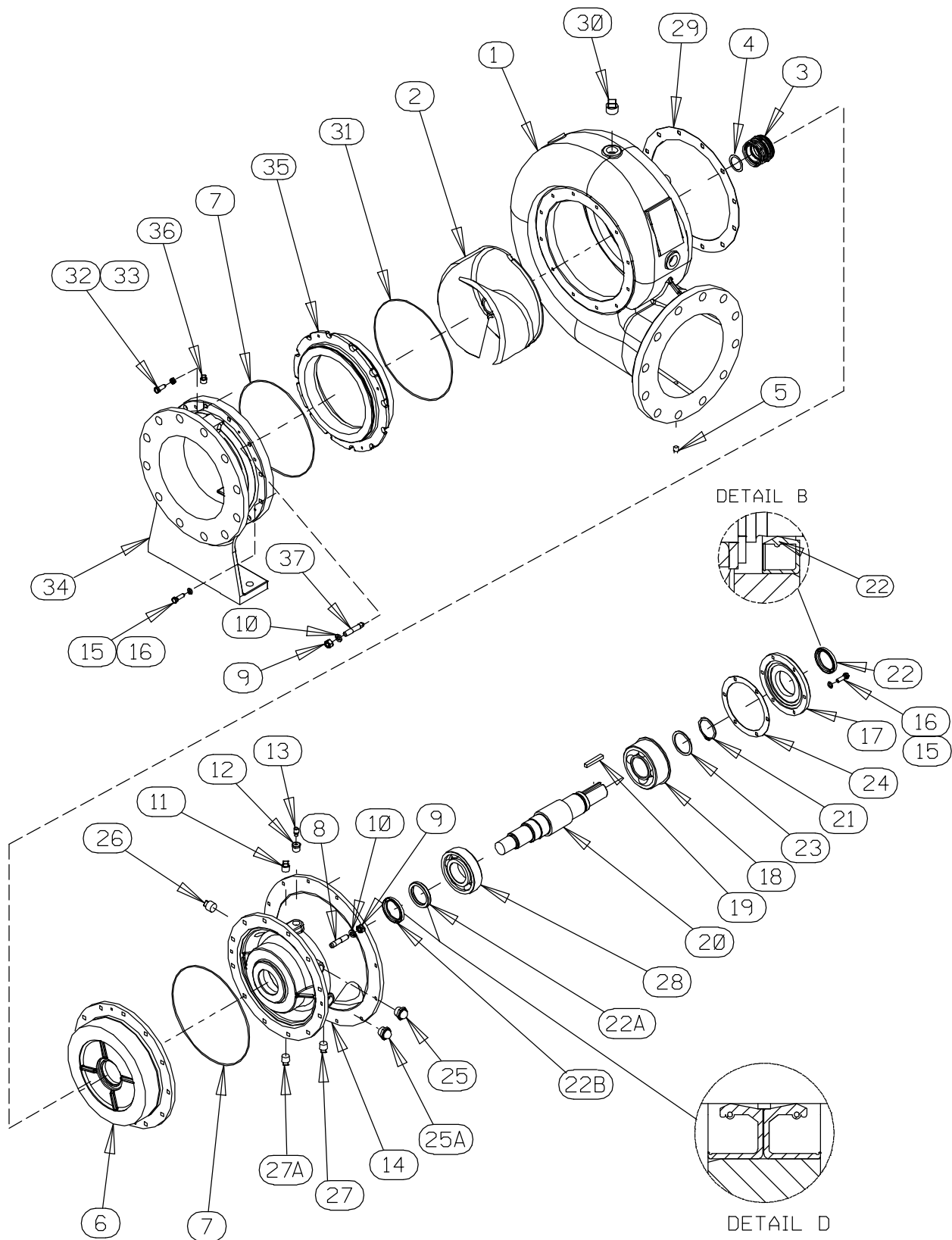


Figure 5. Pump End Assembly

PARTS LIST

Pump End Assembly

ITEM NO.	PART NAME	PART NUMBER	QTY	ITEM NO.	PART NAME	PART NUMBER	QTY
☞ 1	PUMP CASING	SEE NOTE BELOW	1	25	SEAL CVTY SIGHT GAUGE	S1471	1
2	IMPELLER	38615-091 11010	1	25A	BRG CVTY SIGHT GAUGE	S1471	1
3 *	1.88 DIA. SEAL ASSY	46512-048	1	26	PIPE PLUG	P12 15079	2
4 *	ADJ SHIM SET	5091 17090	REF	27	BRG CVTY PIPE PLUG	P08 15079	1
☞ 5	PIPE PLUG	P04 15079	1	27A	SEAL CVTY PIPE PLUG	P08 15079	1
6	SEAL PLATE	38272-716 10000	1	28 *	BALL BEARING	S1911	1
7 *	O-RING	25152-276	2	29 *	GASKET	3200G 18000	1
☞ 8	STUD	C0810 15991	12	☞ 30	PIPE PLUG	P16 10009	5
9	HEX NUT	D08 15991	24	31 *	O-RING	25152-277	1
10	LOCK WASHER	J08 15991	24	32	HEX HEAD CAP SCREW	B0604 15991	4
11	VENTED PIPE PLUG	4823A 15079	1	33	HEX JAM NUT	AT06 15991	4
12	REDUCER PIPE BUSHING	AP0802 15079	1	34	SUCTION HEAD	38248-506 10000	1
13	AIR VENT	S1530	1	35 *	WEAR RING	38691-634 11010	1
14	INTERMEDIATE	38264-705 10000	1	36	PIPE PLUG	P06 15079	1
15	HEX HEAD CAP SCREW	B0605 15991	10	☞ 37	STUD	C0811 15991	12
16	LOCK WASHER	J06 15991	10	NOT SHOWN:			
17	BEARING COVER	38322-432 10000	1		LUBE DECAL	11421A	1
18 *	BALL BEARING	23422-413	1		SUCTION STICKER	6588AG	1
19 *	KEY	N0610 15990	1		DISCHARGE STICKER	6588BJ	1
20 *	IMPELLER SHAFT	38512-524 1706H	1		NAMEPLATE BLANK	38819-002 13000	1
21	RETAINING RING	24124-052	1		DRIVE SCREW	BM#04-03 17000	4
22 *	OIL SEAL	25258-725	1		INTER GUARD	42381-031 24152	2
22A *	OIL SEAL	25258-725	1		DRIVE ASSEMBLY	44162-157	1
22B *	OIL SEAL	25258-725	1		HEX HD CAP SCREW	B0604 15991	2
23	THRUST WASHER	31134-114 15000	1		WARNING DECAL	38817-102	1
24 *	GASKET	38683-475 18000	1		WARNING DECAL	2613FE	1

* INDICATES PARTS RECOMMENDED FOR STOCK

☞ INCLUDED WITH REPAIR 46474-358 1
PUMP CASING ASSY

ILLUSTRATION

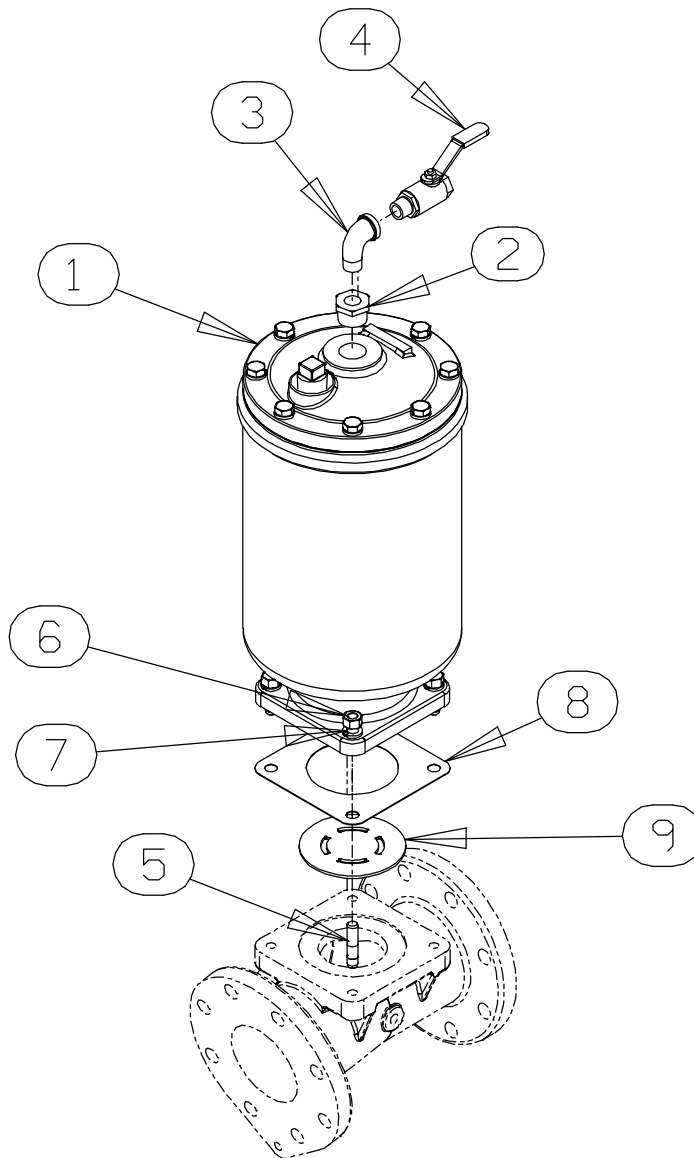


Figure 6. Priming Chamber Kit

PARTS LIST

ITEM NO.	PART NAME	PART NUMBER	QTY
1	PRIMING CHAMBER ASSY	46112-709	1
2	PIPE BUSHING	AP1608 15070	1
3	STREET ELBOW	RS08 11999	1
4	BALL VALVE	26631-052	1
5	STUD	C0809 15991	4
6	HEX NUT	D08 15991	4
7	LOCK WASHER	J08 15991	4
8	* GASKET	38687-053 19060	1
9	BAFFLE	31113-011 17000	1

* INDICATES PARTS RECOMMENDED FOR STOCK

ILLUSTRATION

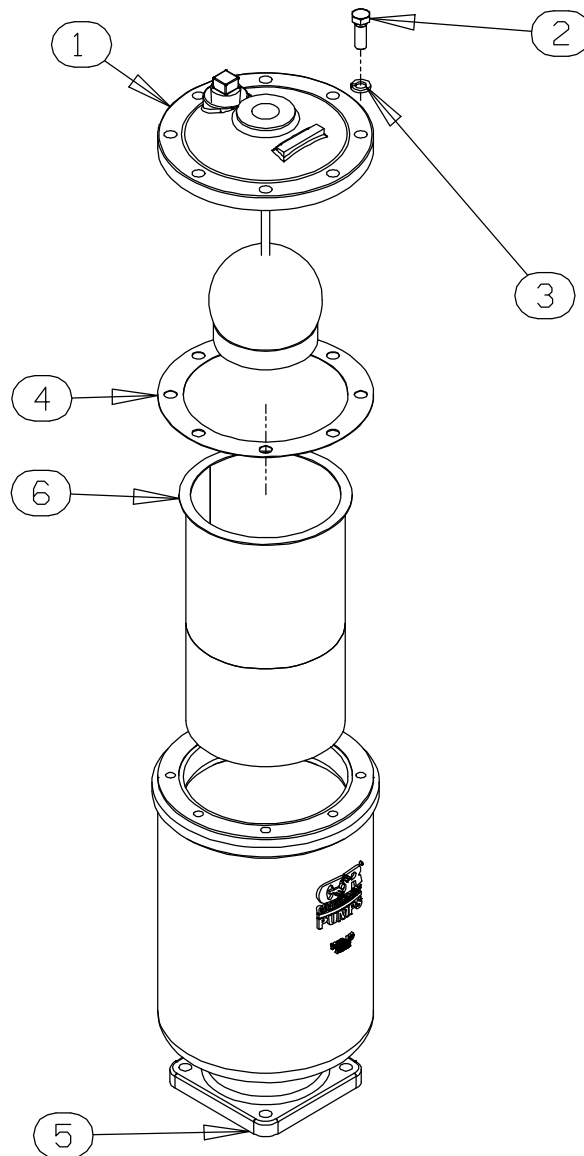


Figure 7. Priming Chamber Assembly

PARTS LIST

ITEM NO.	PART NAME	PART NUMBER	QTY
1	PRIMING VALVE	26664-007	1
	-ORIFICE BUTTON	26688-021	1
2	HEX HD CAPSCREW	B0806 15991	8
3	LOCKWASHER	J08 15991	8
4	* PRIMING VALVE GASKET	38683-657 19060	1
5	PRIMING CHAMBER	38343-020 10000	1
6	STRAINER ASSY	46641-222 17000	1

* INDICATES PARTS RECOMMENDED FOR STOCK

ILLUSTRATION

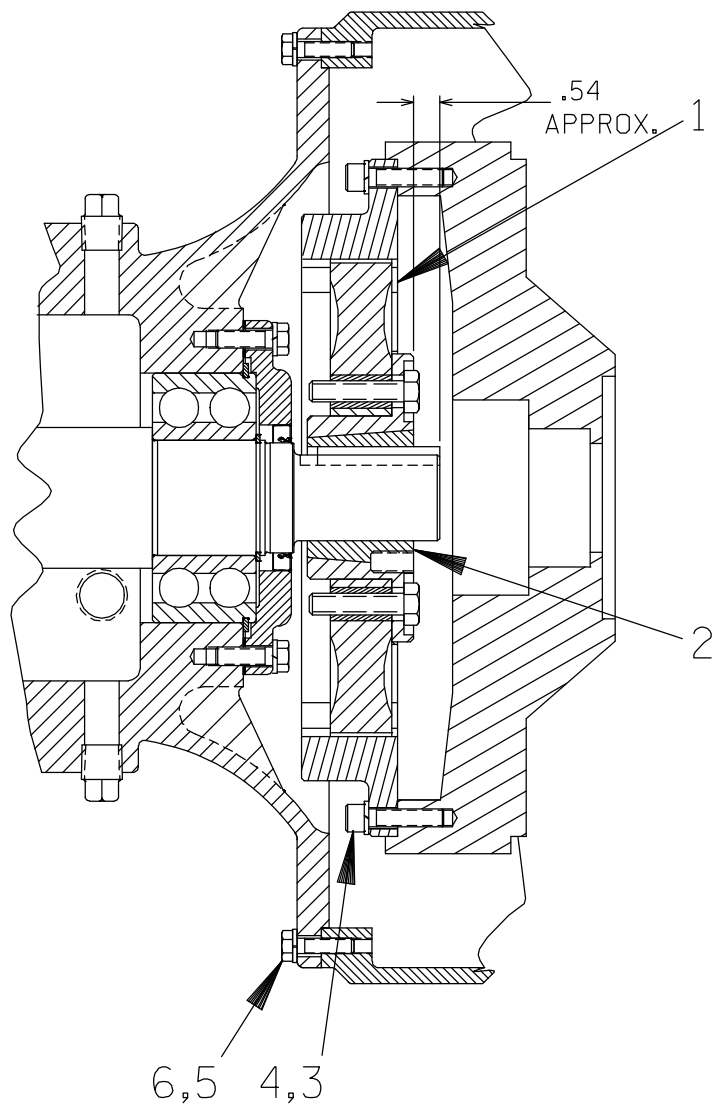
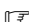

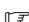

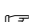

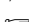





Figure 8. Drive Assembly
PARTS LIST

ITEM NO.	PART NAME	PART NUMBER	QTY
1	COUPLING	24391-102	1
2	BUSHING	24131-497	1
3	 SOCKET HEAD CAPSCREW	BD0606 15990	8
3	 SOCKET HEAD CAPSCREW	22644-220	8
3	SOCKET HEAD CAPSCREW	BD0606-1/2S 15990	8
4	 LOCK WASHER	J06 15991	8
4	 LOCK WASHER	21171-511	8
5	 HEX HEAD CAPSCREW	B0605 15991	12
5	 HEX HEAD CAPSCREW	22645-164	12
6	 LOCK WASHER	J06 15991	12
6	 LOCK WASHER	21171-511	12
	 USE FOR SAE APPLICATIONS		
	 USE FOR METRIC APPLICATIONS		