

SECTION DRAWING

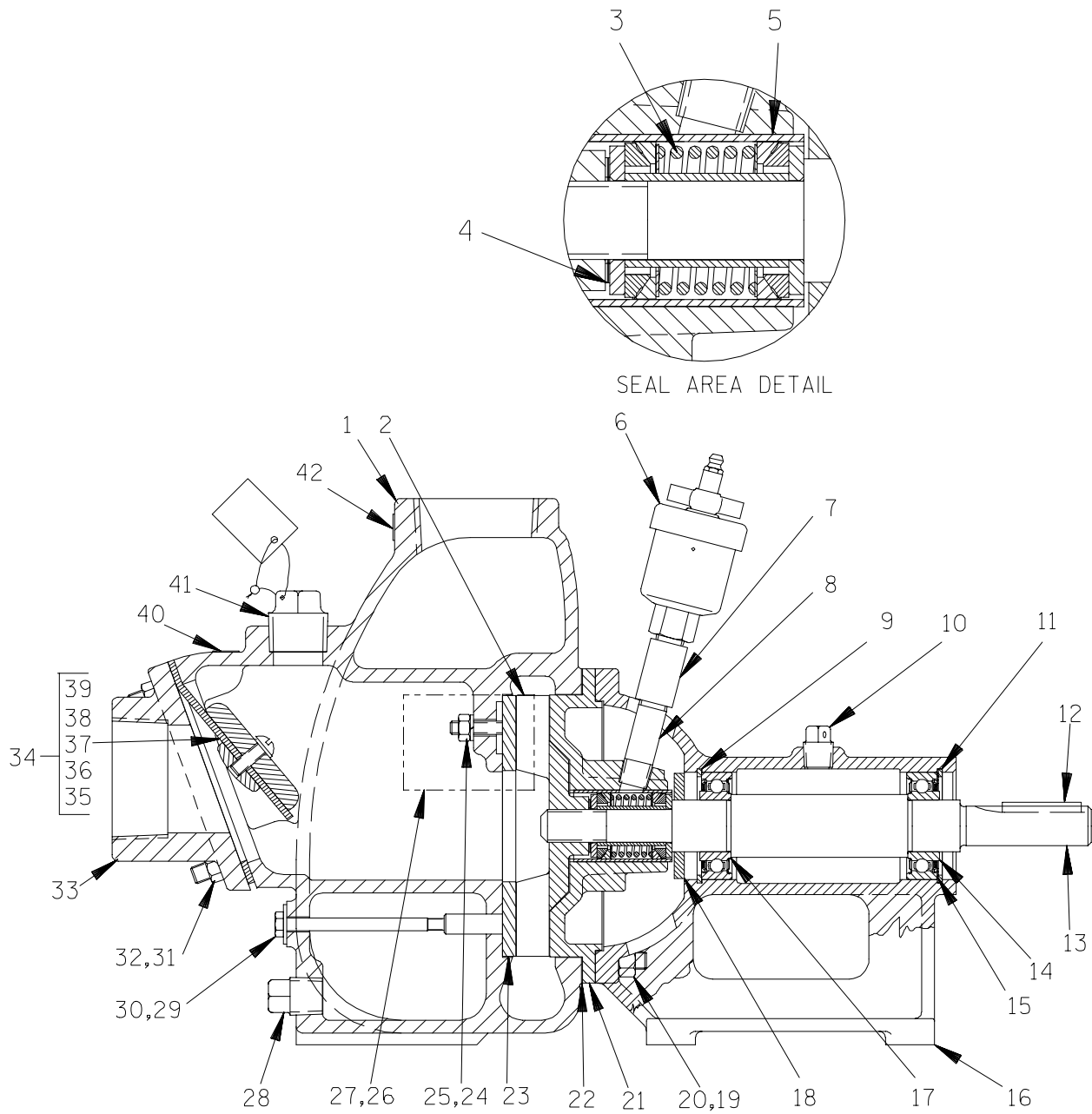


Figure 1. Pump Model 82D2-B

PARTS LIST
Pump Model 82D2-B
 (From S/N 344003 up)

If your pump serial number is followed by an "N", your pump is **NOT** a standard production model. Contact the Gorman-Rupp Company to verify part numbers.

ITEM NO.	PART NAME	PART NUMBER	MAT'L CODE	QTY
1	PUMP CASING	6846C	10010	1
2	* IMPELLER	2912B	10010	1
3	* SEAL ASSY	GS625	---	1
4	* IMPELLER ADJ SHIM SET	513A	17090	REF
5	* SEAL LINER	1904	14080	REF
6	GREASE CUP	S36	---	1
7	PIPE COUPLING	AE04	15079	1
8	PIPE NIPPLE	T0408	15070	1
9	RETAINING RING	S240	---	1
10	VENTED PLUG	4823	15079	1
11	RETAINING RING	S240	---	1
12	* SHAFT KEY	N0306	15990	1
13	IMPELLER SHAFT	2931	15000	1
14	* BALL BEARING	S1085	---	1
15	BEARING ADJ SHIM SET	8540	15990	1
16	PEDESTAL	2928	10010	1
17	* BALL BEARING	S1085	---	1
18	SLINGER RING	3228	19120	1
19	STUD	C0607	15991	4
20	HEX NUT	D06	15991	4
21	SEAL PLATE ASSY	2929	10010	1
22	* GASKET SET	504G	18000	1
23	WEAR PLATE	2643A	15990	1
24	LOCK WASHER	J04	15991	1
25	HEX NUT	D04	15991	1
26	NAME PLATE	38812-041	13990	1
27	DRIVE SCREW	BM#04-03	17000	4
28	PIPE PLUG	P08	15079	1
29	HEX HD CAPSCREW	B0414	15991	1
30	* FLAT WASHER	KF04	18040	1
31	STUD	C0606	15991	4
32	HEX NUT	D06	15991	4
33	SUCTION FLANGE	1361	10010	1
34	* FLAP VALVE ASSEMBLY	1361A	---	1
35	-LARGE VALVE WEIGHT	19B	10010	1
36	-SMALL VALVE WEIGHT	1354	15160	1
37	* -CHECK VALVE GASKET	1361G	19070	1
38	-LOCK WASHER	J04	17090	1
39	-RD HD MACHINE SCREW	X0403	17090	1
40	SUCTION STICKER	6588AG	---	1
41	FILL PLUG ASSEMBLY	48271-063	---	1
42	DISCHARGE STICKER	6588BJ	---	1
NOT SHOWN:	ROTATION DECAL	2613	---	1
OPTIONAL:	STREET ELBOW	RS32	11999	1

* INDICATES PARTS RECOMMENDED FOR STOCK