

SECTION DRAWING

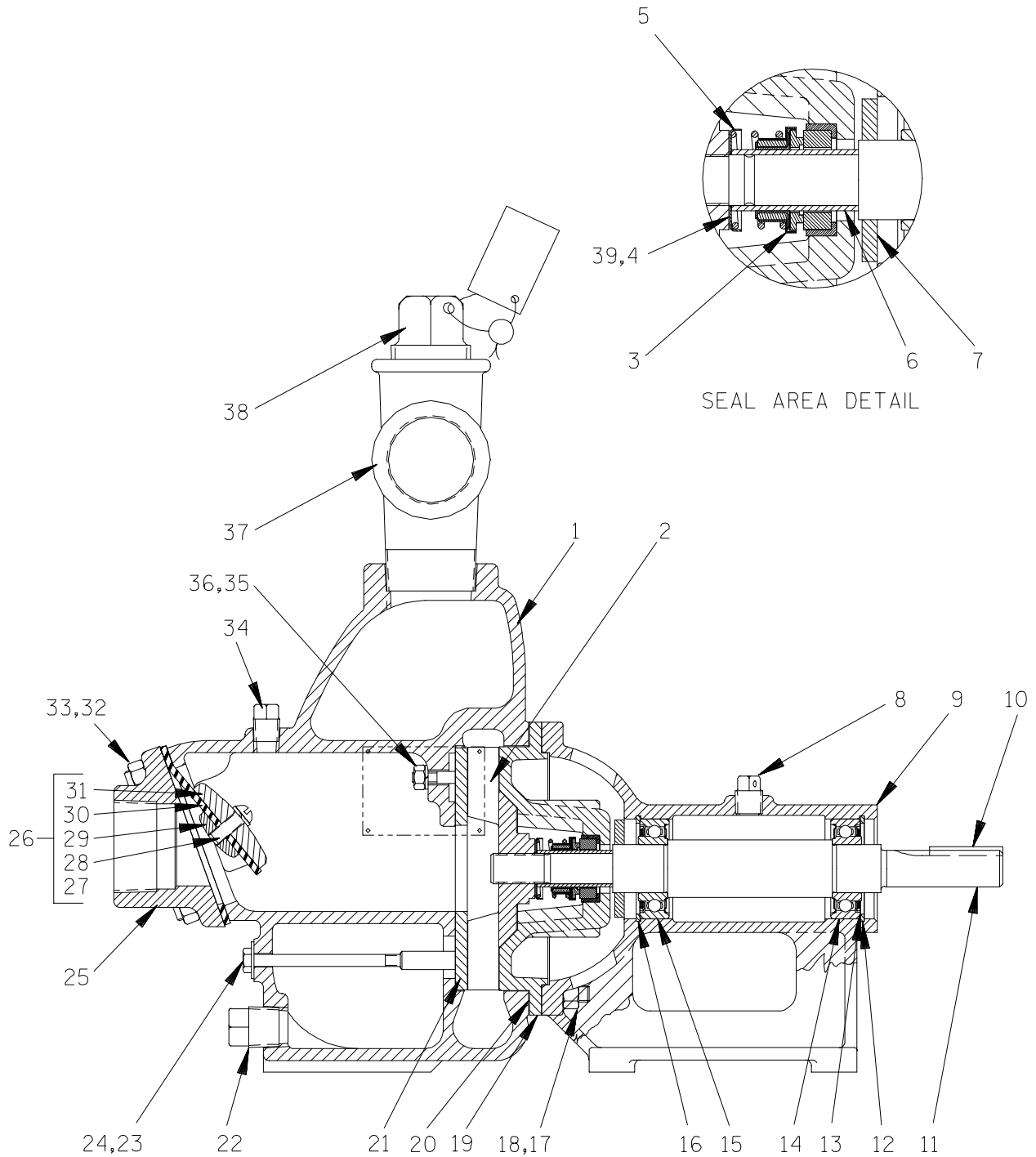


Figure E-1. Pump Model 81 1/2B52-B

PARTS LIST
Pump Model 81 1/2B52-B
 (From S/N 1240557 up)

If your pump serial number is followed by an "N", your pump is **NOT** a standard production model. Contact the Gorman-Rupp Company to verify part numbers.

ITEM NO.	PART NAME	PART NUMBER	MAT'L CODE	QTY	ITEM NO.	PART NAME	PART NUMBER	MAT'L CODE	QTY
1	PUMP CASING	6846B	10010	1	26	FLAP VALVE ASSY	1352	---	1
2 *	IMPELLER	4148C	10010	1	27	-LOCKWASHER	J04	17090	1
3 *	SEAL ASSY	25285-853	---	1	28	-RD HD MACH SCREW	X0403	17090	1
4 *	IMPELLER SHIM SET	513A	17090	1	29	-SMALL VALVE WEIGHT	1354	15160	1
5 *	SPRING RETAINER	31161-041	17000	1	30 *	-FLAP VALVE/GSKT	1352G	19070	1
6 *	SHAFT SLEEVE	2353	17020	1	31	-LARGE VALVE WEIGHT	1353	10010	1
7 *	SLINGER RING	3228	19120	1	32	STUD	C0606	15991	4
8	VENTED PLUG	4823	15079	1	33	HEX NUT	D06	15991	4
9	PEDESTAL	2928	10010	1	34	PIPE PLUG	P04	15079	1
10 *	SHAFT KEY	N0306	15990	1	35	LOCKWASHER	J04	15991	1
11	IMPELLER SHAFT	2931	15000	1	36	HEX NUT	D04	15991	1
12	RETAINING RING	S240	---	1	37	SERVICE TEE	US24	11999	1
13 *	BEARING SHIM SET	8540	15990	1	38	FILL PLUG ASSY	48271-066	---	1
14 *	BALL BEARING	S1085	---	1	39 *	IMPELLER SHIM	513A-3	17090	2
15 *	BALL BEARING	S1085	---	1	NOT SHOWN:				
16	RETAINING RING	S240	---	1		SUCTION STICKER	6588AG	---	1
17	STUD	C0607	15991	4		DISCHARGE STICKER	6588BJ	---	1
18	HEX NUT	D06	15991	4		PRIMING STICKER	6588AH	---	1
19	SEAL PLATE	2930A	10010	1		ROTATION DECAL	2613M	---	1
20 *	CASING GASKET SET	504GA	20000	1		G-R DECAL	GR-03	---	1
21 *	WEAR PLATE ASSY	2643A	15990	1		LUBE DECAL	38816-075	---	1
22	PIPE PLUG	P08	15079	1		NAME PLATE	38812-041	13990	1
23	HEX HD CAPSCREW	B0414	15991	1		DRIVE SCREW	BM#04-03	17000	4
24 *	FIBER WASHER	KF04	18040	1	OPTIONAL:				
25	SUCTION FLANGE	8599	10010	1		J C MECHANICAL SEAL	25271-846	---	1

* INDICATES PARTS RECOMMENDED FOR STOCK