

SECTION DRAWING

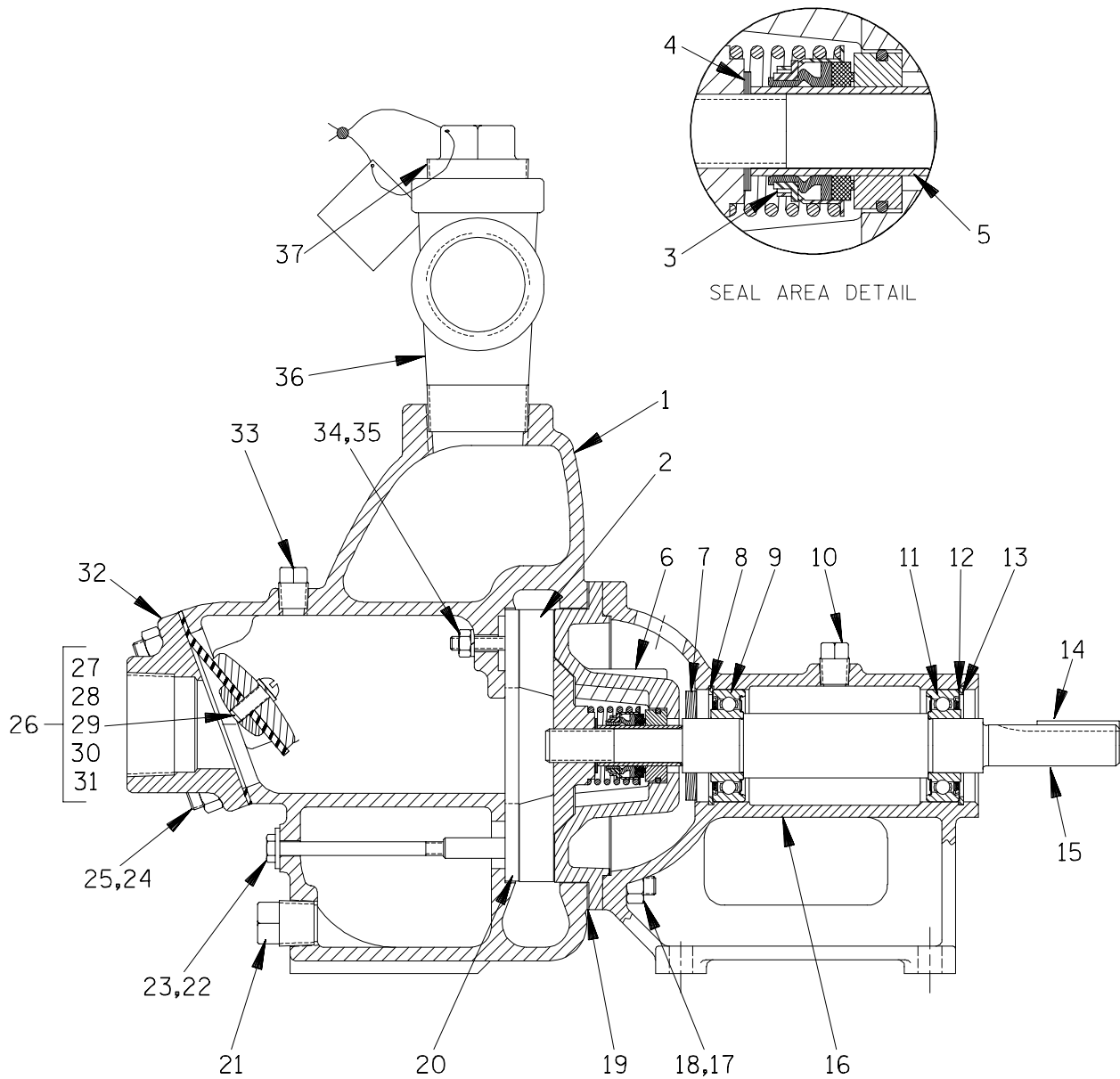


Figure 1. Pump Model 81 1/2A3-B

**PARTS LIST**  
**Pump Model 81 1/2A3-B**  
 (From S/N 275382 up)

If your pump serial number is followed by an "N", your pump is **NOT** a standard production model. Contact the Gorman-Rupp Company to verify part numbers.

ITEM NO.	PART NAME	PART NUMBER	MAT'L CODE	QTY
1	PUMP CASING	6846B	10010	1
2	* IMPELLER	2912F	10010	1
3	* SEAL ASSEMBLY	S33	---	1
4	* IMPELLER ADJ SHIM SET	513A	17090	1
5	* SHAFT SLEEVE	2353	17020	1
6	SEAL PLATE	2930A	10010	1
7	SLINGER RING	3228	19120	1
8	BEARING RETAINING RING	S240	---	1
9	* INBOARD BALL BEARING	S1085	---	1
10	VENTED PIPE PLUG	4823	15079	1
11	* OUTBOARD BALL BEARING	S1085	---	1
12	BEARING ADJ SHIM SET	8540	15990	1
13	BEARING RETAINING RING	S240	---	1
14	* SHAFT KEY	N0306	15990	1
15	IMPELLER SHAFT	2931	15000	1
16	PEDESTAL	2928	10010	1
17	STUD	C0607	15991	4
18	HEX NUT	D06	15991	4
19	* CASING GASKET SET	504GA	20000	1
20	* WEAR PLATE ASSY	2643A	15990	1
21	PUMP CASING DRAIN PLUG	P08	15079	1
22	HEX HD CAPSCREW	B0414	15991	1
23	FLAT WASHER	KF04	18040	1
24	STUD	C0607	15991	4
25	HEX NUT	D06	15991	4
26	FLAP VALVE ASSY	1352	---	1
27	-LARGE VALVE WEIGHT	1353	10010	1
28	-RD HD MACH SCREW	X0403	17090	1
29	-LOCKWASHER	J04	17090	1
30	-SMALL VALVE WEIGHT	1354	15160	1
31	* -CHECK VALVE GASKET	1352G	19070	1
32	SUCTION FLANGE	8599	10010	1
33	PIPE PLUG	P04	15079	1
34	LOCKWASHER	J04	15991	1
35	HEX NUT	D04	15991	1
36	SERVICE TEE	US24	11999	1
37	FILL PLUG ASSY	48271-066	---	1
NOT SHOWN:				
	G-R DECAL	GR-03	---	1
	ROTATION DECAL	2613M	---	1
	LUBE DECAL	38816-075	---	1
	INSTRUCTION TAGS	38817-011	---	1
	INSTRUCTION TAGS	38817-020	---	1
	SUCTION STICKER	6588AG	---	1
	DISCHARGE STICKER	6588BJ	---	1
	PRIMING STICKER	6588AH	---	1
	NAMEPLATE	38812-041	13990	1
	DRIVE SCREW	BM#04-03	17000	4

\* INDICATES PARTS RECOMMENDED FOR STOCK