

# Priming Assisted Centrifugal Pump w/Autostart



## Model PAH4C60-6068H Size 6" x 4"



Total Head		Capacity of Pump in U.S. Gallons per Minute (GPM) at Continuous Performance			
P.S.I.	Feet				
164.7	380	400	400	400	400
156.1	360	620	800	800	800
138.7	320	655	935	1140	1170
121.4	280	660	950	1230	1350
104.0	240	660	950	1235	1410
86.7	200	660	950	1235	1420
69.4	160	660	950	1235	1420
52.0	120	660	950	1235	1425
<b>Suction Lift</b>		<b>25'</b>	<b>20'</b>	<b>15'</b>	<b>10'</b>

**PUMP SPECIFICATIONS**

**Size:** 6" x 4" (152 mm x 102 mm) Flanged.  
**Casing:** Ductile Iron 65-45-12.  
 Maximum Operating Pressure 247 psi (1703 kPa).\*  
**Enclosed Type, Two Vane Impeller:** Ductile Iron 65-45-12.  
 Handles 1/2" (12,7 mm) Diameter Spherical Solids.  
**Suction Head:** Ductile Iron 65-45-12  
**Suction Spool:** Gray Iron 30.  
**Impeller Shaft:** Alloy Steel 4150M.  
**Replaceable Wear Ring:** Ductile Iron 65-45-12.  
**Bearing Pedestal:** Gray Iron 30.  
**Seal Plate:** Gray Iron 30.  
**Seal:** Mechanical, SAE 30 Non-Detergent Oil-Lubricated. Silicon Carbide Rotating Face and Stationary Seat. Fluorocarbon Elastomers (DuPont Viton® or Equivalent). Stainless Steel 316 Cage and Stainless Steel 18-8 Spring. Maximum Temperature of Liquid Pumped 160°F (71°C).\*  
**Shaft Sleeve:** Stainless Steel 303/304.  
**Priming Chamber:** Gray Iron 30 Housing w/Stainless Steel Float and Linkage.  
**Discharge Check Valve:** Ductile Iron Housing w/Buna-N Flapper.  
**Radial Bearing:** Open Single Ball.  
**Thrust Bearing:** Open Double Ball.  
**Bearing Cavity Lubrication:** Lithium EP2 Grease.  
**Gaskets:** Vegetable Fiber.  
**O-Rings:** Buna-N.  
**Hardware:** Standard Plated Steel.  
**Seal Cavity Oil Level Sight Gauges.**

\*Consult Factory for Applications Exceeding Maximum Pressure and/or Temperature Indicated.

**Standard Equipment:** Strainer. Gear-Driven Air Compressor. Hoisting Bail. Combination Skid Base w/Fuel Tank. Single Ball Type Float Switch.\*\*  
**Optional Equipment:** Battery. Heated Priming Chamber Kit. Suction Vacuum and Discharge Pressure Gauge Kit. High Speed (55 MPH/89 KM/H) Tandem Axle Pneumatic-Tired Wheel Kit w/wo DOT-Approved Lights and Electric Brakes. Tandem Axle Over-the-Road Trailer (Meets DOT Requirements) Available w/Either Electric or Hydraulic Surge Brakes, Running Lights, Jack Stands and Safety Chains/Cables. EPS w/Submersible Transducer Liquid Level Sensor (50 Ft. [15M] Cable Standard, Alternate Lengths Available).

\*\*50 Ft. (15 m) Standard Length; Dual Switches and Alternate Cable Lengths Available From the Factory.



**WARNING!**  
Do not use in explosive atmosphere or for pumping volatile flammable liquids.

**ENGINE SPECIFICATIONS**

**Model:** John Deere 6068H "Power Tech."  
**Type:** Six Cylinder, Four Cycle, Turbocharged, Charge Air Cooled, Enclosed, Liquid Cooled Diesel Engine.  
**Displacement:** 415 Cu. In. (6,8 liters).  
**Governor:** Electronic.  
**Lubrication:** Forced Circulation.  
**Air Cleaner:** Dry Type.  
**Fuel Tank:** 133 U.S. Gals. (503 liters).  
**Full Load Operating Time:** 15.7 Hrs.  
**Starter:** 12V Electric.

**Standard Features:** Low Oil Pressure, High Coolant Temperature and Start Failure Safety Shut Down Switches/Indicators. Throttle Control. Autostart Instrument Panel Includes: Tachometer, Voltmeter, Hourmeter, Coolant Temperature and Oil Pressure Indicators, Manual/Stop/Auto Key Switch, 10 Amp Fuse, Audible Startup Warning Delay. Muffler w/Weather Cap.

**JOHN DEERE PUBLISHED PERFORMANCE:**  
 Maximum Gross BHP (Ind/Hvy Duty)  
 173 (129 kW) @ 2400 RPM



**GORMAN-RUPP PUMPS**

www.grpumps.com

Specifications Subject to Change Without Notice

Printed in U.S.A.

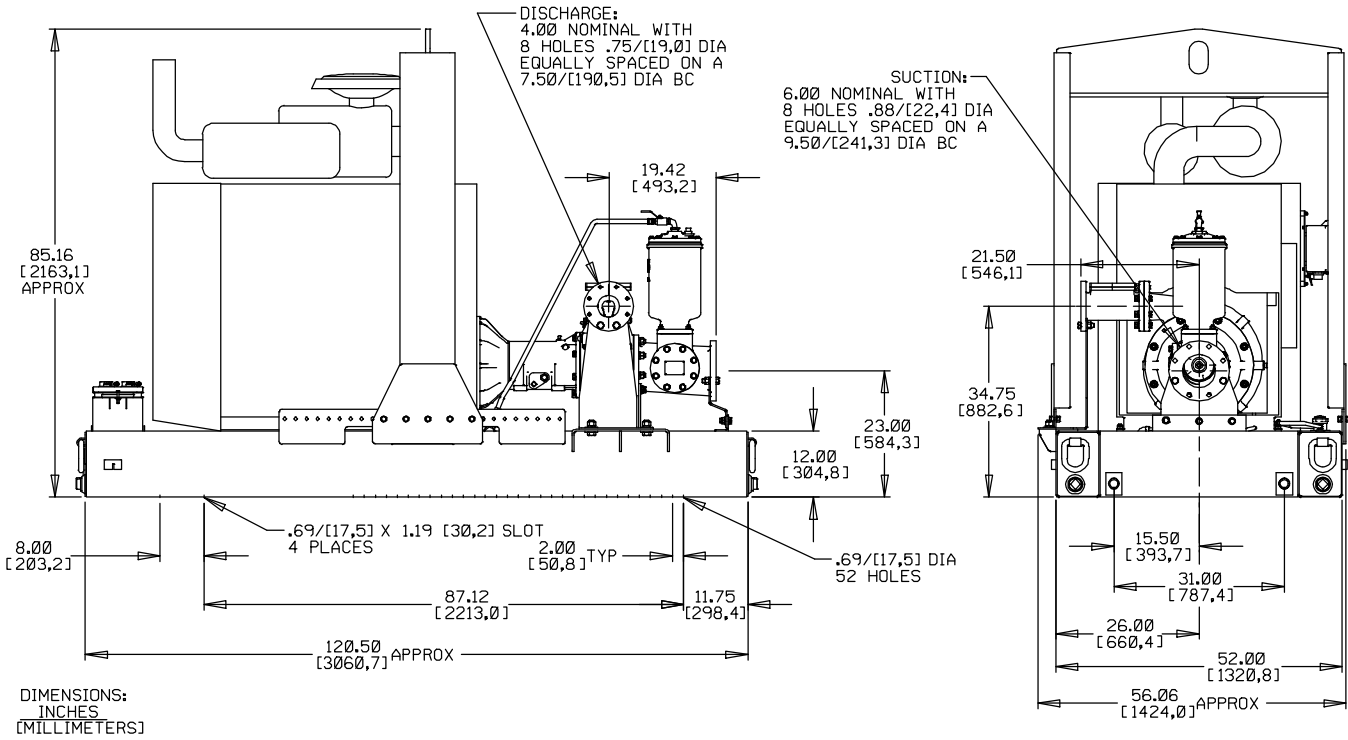
**Specification Data**

APPROXIMATE DIMENSIONS and WEIGHTS

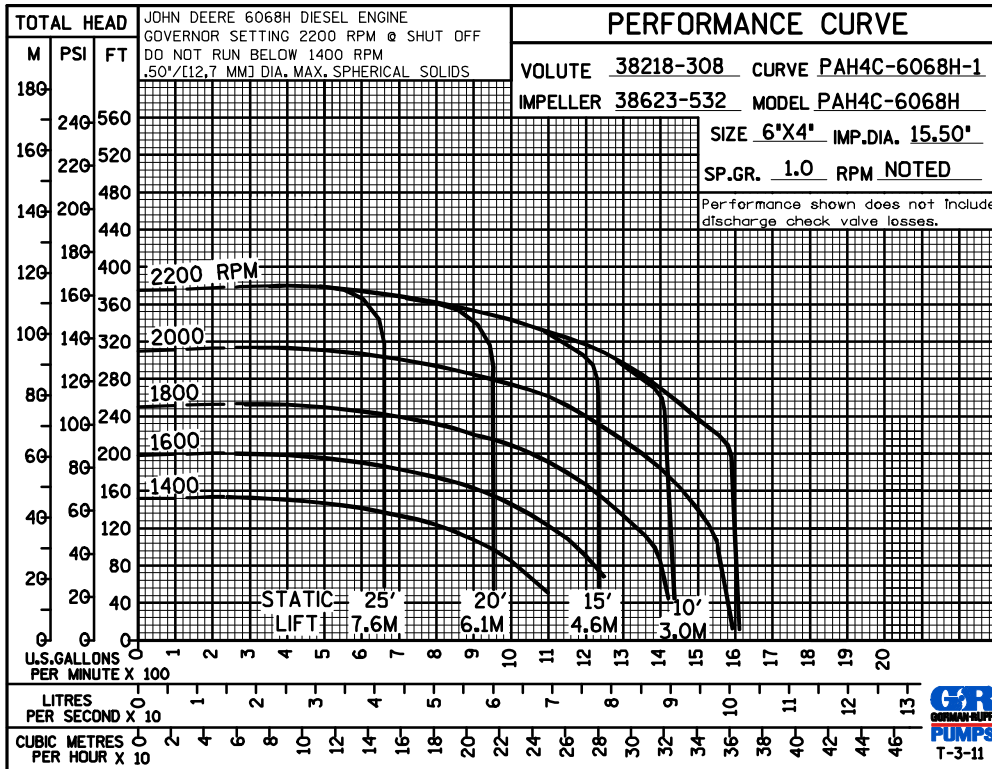
**NET WEIGHT:**  
**SHIPPING WEIGHT:**  
**EXPORT CRATE SIZE:**

**3800 LBS. [1724 KG.]**  
**5140 LBS. [2331 KG.]**  
**414 CU. FT. (11,7 CU. M.)**

SECTION 43, PAGE 260



POWERED BY JOHN DEERE 6068H DIESEL ENGINE



**GORMAN-RUPP PUMPS**

www.grpumps.com

Specifications Subject to Change Without Notice

Printed in U.S.A.