



VARIOUS PATENTS APPLY

# Priming Assisted Centrifugal Pump w/Autostart

## Model PA6H60-4045H FT4 Size 8" x 6"



Total Head		Capacity of Pump in U.S. Gallons per Minute (GPM) at Continuous Performance			
P.S.I.	Feet				
76.7	177	725	725	725	725
65.0	150	1375	1375	1375	1375
54.2	125	1650	1850	1875	1875
43.4	100	1720	2000	2225	2225
32.5	75	1760	2050	2350	2480
21.7	50	1800	2080	2400	2625
10.8	25	1850	2125	2450	2700
<b>Suction Lift</b>		<b>23'</b>	<b>20'</b>	<b>15'</b>	<b>10'</b>

Photo not available at time of publishing

### PUMP SPECIFICATIONS

- Size:** 8" x 6" (203 mm x 152 mm) Flanged.
- Casing:** Ductile Iron 65-45-12.  
Maximum Operating Pressure 115 psi (793 kPa).\*
- Semi-Open, Two Vane Impeller:** Ductile Iron 65-45-12.  
Handles 3" (76,2 mm) Diameter Spherical Solids.
- Impeller Shaft:** Stainless Steel 17-4 PH.
- Replaceable Wear Plate:** Ductile Iron 80-60-03.
- Intermediate Bracket:** Gray Iron 30.
- Seal Plate:** Gray Iron 30.
- Seal:** Mechanical, Oil-Lubricated. Silicon Carbide Rotating and Stationary Faces. Stainless Steel 316 Stationary Seat. Fluorocarbon Elastomers (DuPont Viton® or Equivalent). Stainless Steel 18-8 Cage and Spring. Maximum Temperature of Liquid Pumped 160°F (71°C).\*
- Shaft Sleeve:** Stainless Steel 17-4 PH.
- Priming Chamber:** Gray Iron 30 Housing w/Stainless Steel Float and Linkage.
- Discharge Check Valve:** Ductile Iron 30 Housing w/Buna-N Flapper.
- Radial and Thrust Bearings:** Open Double Ball.
- Bearing and Seal Cavity Lubrication:** SAE 30 Non-Detergent Oil.
- O-Rings:** Buna-N and PTFE.
- Gaskets:** Resistant Synthetic Rubber, Cork, PTFE, Buna-N, Vegetable Fiber, and Compressed Synthetic Fibers.
- Hardware:** Standard Plated Steel.
- Bearing and Seal Cavity Oil Level Sight Gauges.**
- \*Consult Factory for Applications Exceeding Maximum Pressure and/or Temperature Indicated.*
- Standard Equipment:** Gear-Driven Air Compressor. Hoisting Bail. Combination Skid Base w/Fuel Tank. Strainer. [Single Ball Type Float Switch](#). [Full Feature Control Panel](#).\*\*
- Optional Equipment:** Battery. Skid Drag Base Kit. Heated Priming Chamber Kit. Suction and Discharge NPT Threaded Flange Kits. High Speed (55 MPH/89 KM/H) Single Axle Pneumatic-Tired Wheel Kit w/wo DOT-Approved Lights and Electric Brakes. [Tandem Axle Over-the-Road Trailer](#) (Meets DOT Requirements) Available w/Either Electric or Hydraulic Surge Brakes, Running Lights, Jack Stands and Safety Cables. Submersible Transducer Liquid Level Sensor. \*\*
- \*\*50 Ft. (15 m) Standard Length; Dual Switches and Alternate Cable Lengths Available From the Factory.*

**WARNING!**

Do not use in explosive atmosphere or for pumping volatile flammable liquids.

### ENGINE SPECIFICATIONS

- Model:** John Deere 4045HFC04.
- EPA Tier** Tier 4.
- Type:** Turbocharged Four Cylinder, Diesel Engine w/Air Compressor.
- Displacement:** 276 Cu. In. (4,5 liters).
- Governor:** Electronic Isochronous.
- Lubrication:** Forced Circulation.
- Air Cleaner:** Dry Type.
- Fuel Tank:** 110 U.S. Gals. (416 liters).
- Full Load Operating Time:** 17.8 Hrs.
- Starter:** 12V Electric.
- Optional:** Electronic Fuel Level Sensor.
- Engine Control Features:** Padlockable Box with Throttle Control, Tachometer, Coolant Temperature, Oil Pressure, Voltage and Overstart Indicators/Shutdowns. Manual/Stop/Auto Keyswitch. Audible Startup Warning Delay. Fuel Level Display/Alarm/Shutdown (For Use With Optional Fuel Level Sensor).

**JOHN DEERE PUBLISHED PERFORMANCE:**  
Maximum Gross BHP (Continuous)  
125 (93 kW) @ 2200 RPM



GORMAN-RUPP PUMPS

www.grpumps.com

Specifications Subject to Change Without Notice

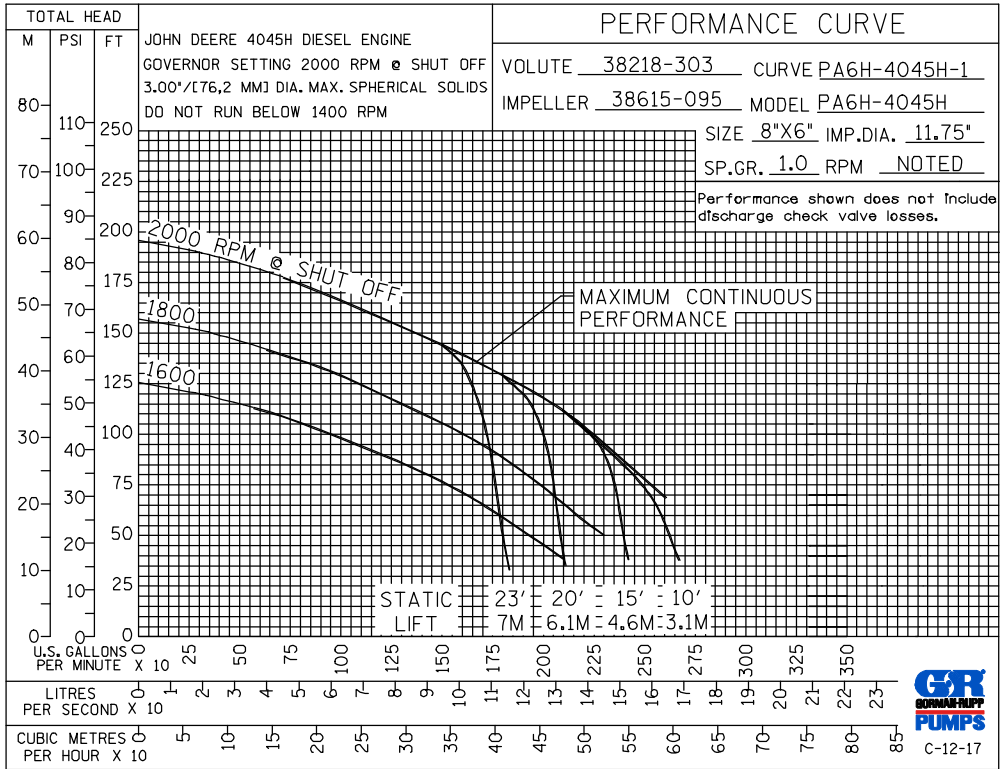
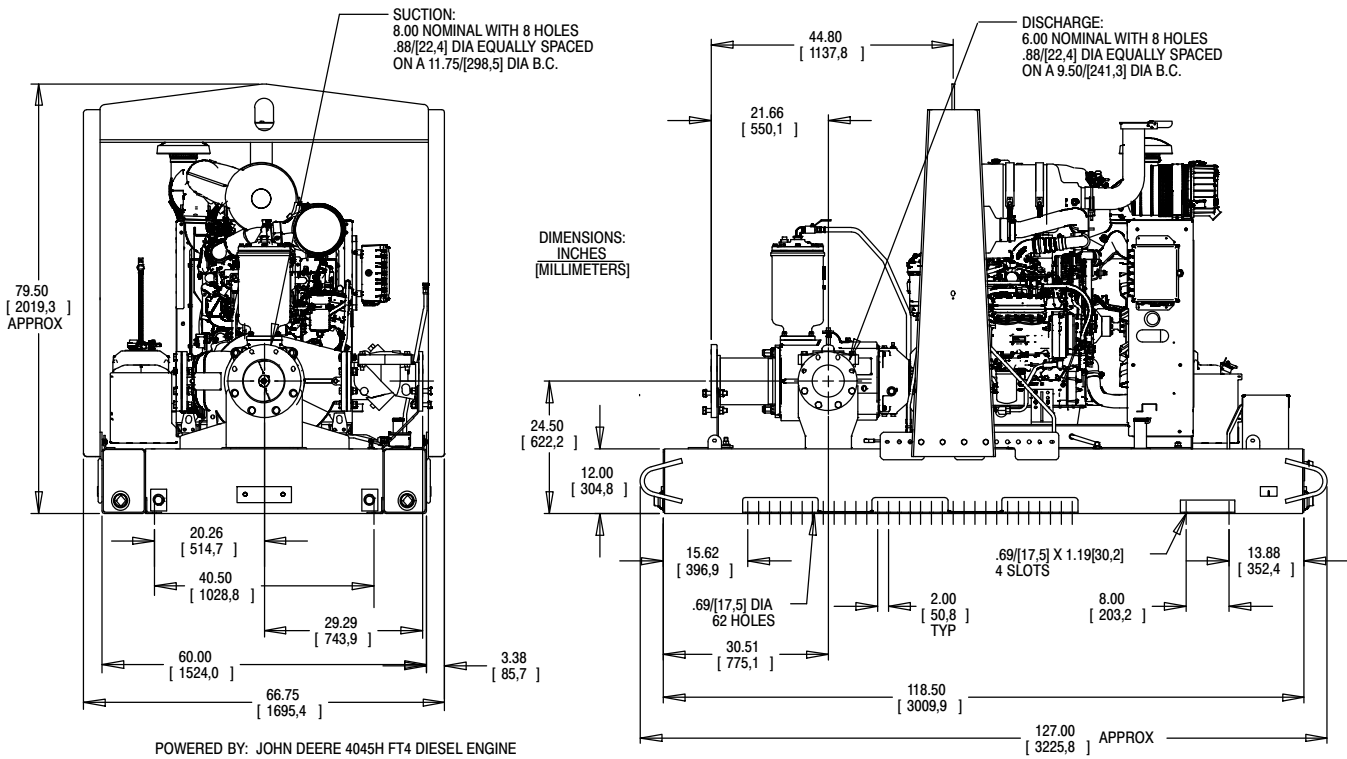
Printed in U.S.A.

**Specification Data**

**SECTION 42, PAGE 1143**

APPROXIMATE  
DIMENSIONS and WEIGHTS

**NET WEIGHT: 4650 LBS. (2109,2 KG.)**  
**SHIPPING WEIGHT: 4900 LBS. (2222,6 KG)**  
**EXPORT CRATE SIZE: 450 CU. FT. (12,7 CU. M.)**



**GORMAN-RUPP PUMPS**

www.grpumps.com

Specifications Subject to Change Without Notice

Printed in U.S.A.