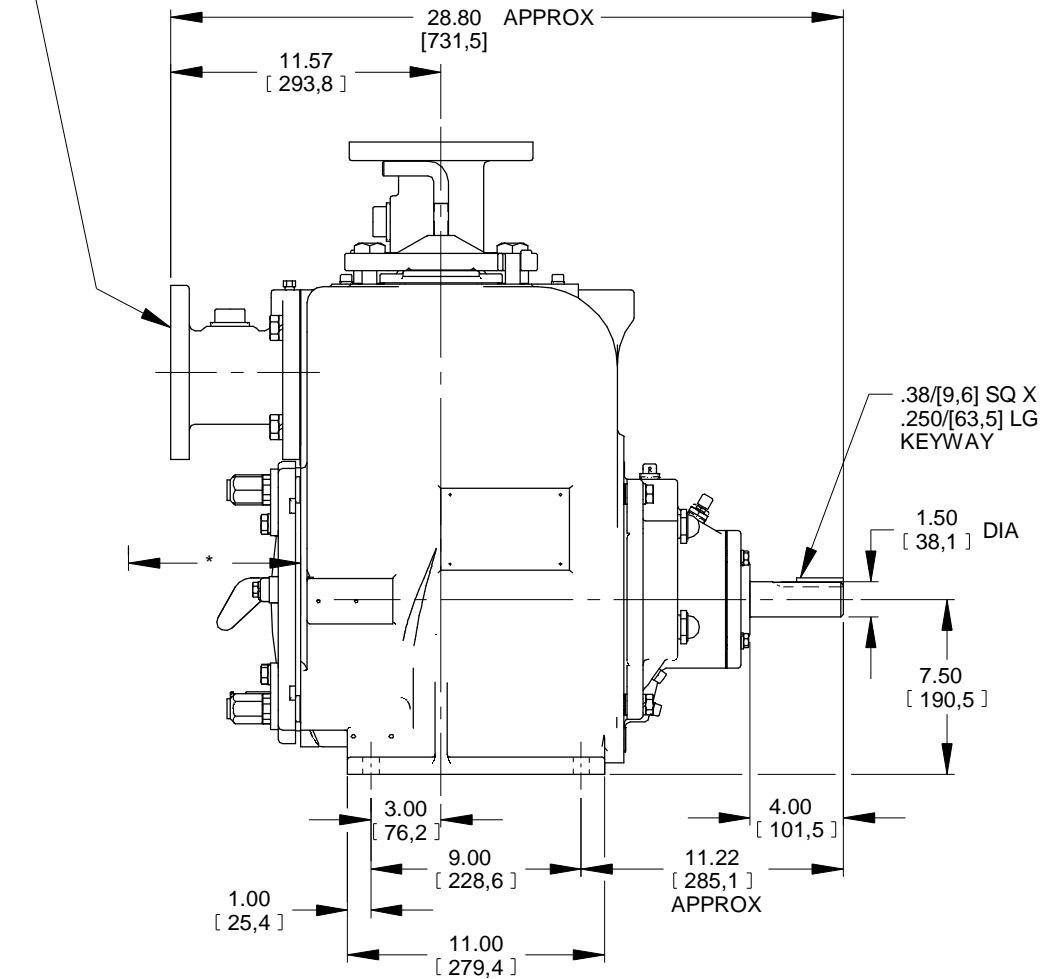
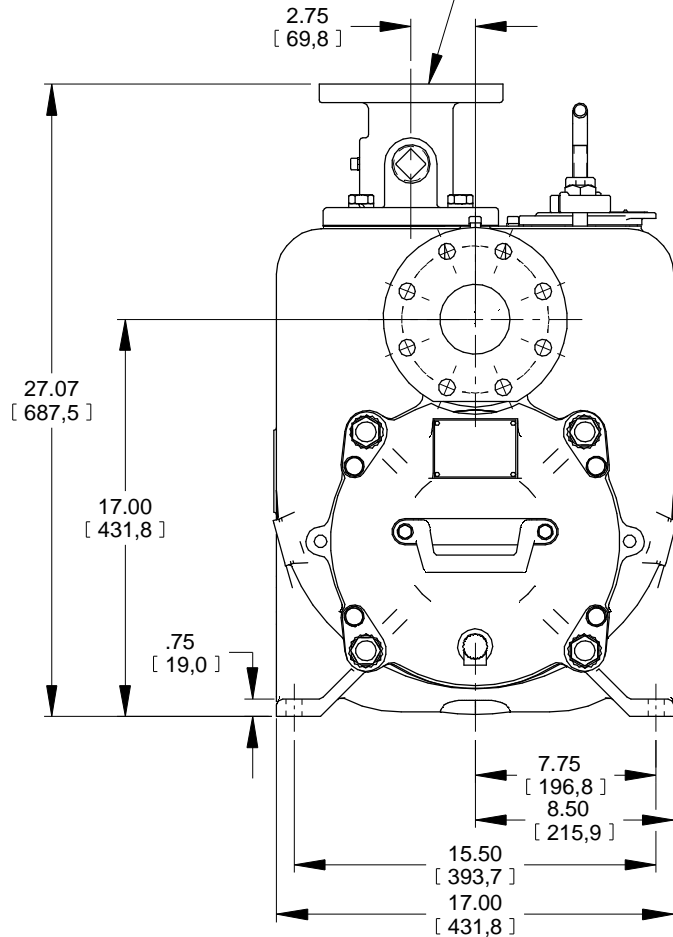


\* 18.00[457,2] RECOMMENDED FOR REMOVAL OF BACK COVER PLATE

7.50[190,5] REQUIRED FOR REMOVAL OF BACK COVER PLATE

METRIC DISCHARGE FLANGE:  
80,0 MM, WITH (8) 18,0 MM DIA HOLES  
EQUALLY SPACED ON A 160,0 MM DIA  
BC PER DIN 2527, (PN16).

METRIC SUCTION FLANGE:  
80,0 MM, WITH (8) 18,0 MM DIA HOLES  
EQUALLY SPACED ON A 160,0 MM DIA  
BC PER DIN 2527, (PN16).



DIMENSIONS:  
INCHES  
[MILLIMETERS]

11-023 a	<b>THE GORMAN-RUPP CO.</b>		DRAWN BY MLB	SCALE 3/16	MODEL U3BS-B /FM
	MANSFIELD, OHIO	ST. THOMAS, ONTARIO	DATE 3-18-04	REVISED 7-19-12	OUTLINE NUMBER 17593