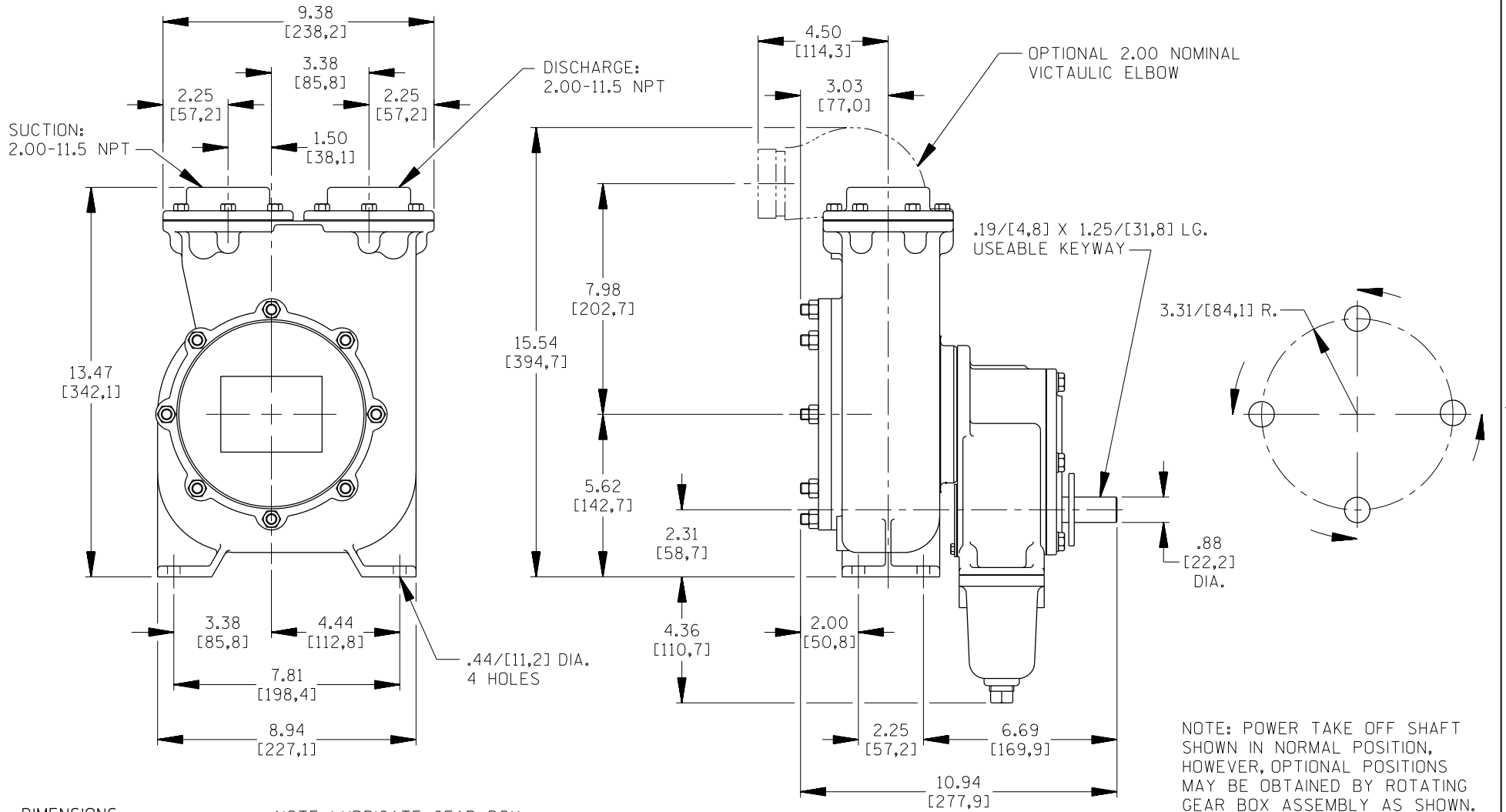


B-8451B

B 17762



NOTE: POWER TAKE OFF SHAFT SHOWN IN NORMAL POSITION, HOWEVER, OPTIONAL POSITIONS MAY BE OBTAINED BY ROTATING GEAR BOX ASSEMBLY AS SHOWN.

DIMENSIONS:
INCHES
[MILLIMETERS]

NOTE: LUBRICATE GEAR BOX WITH S.A.E. #90 GEAR OIL. GEAR RATIO 5.69:1.00

	THE GORMAN-RUPP CO. MANSFIELD, OHIO ST. THOMAS, ONTARIO		DRAWN BY SS	SCALE 5/16	MODEL O2F-GL
	DATE 3-2-05	REVISED	OUTLINE NUMBER 17762		