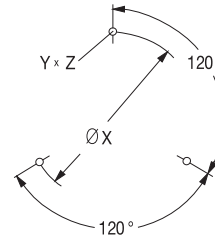
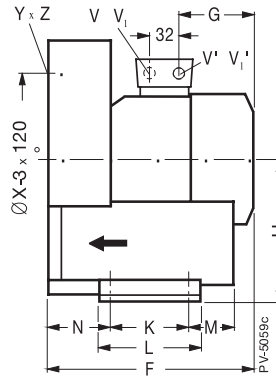
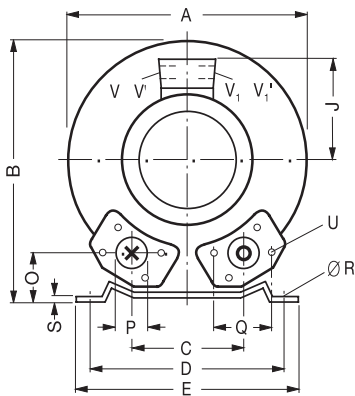


2BH1 10. – 49.

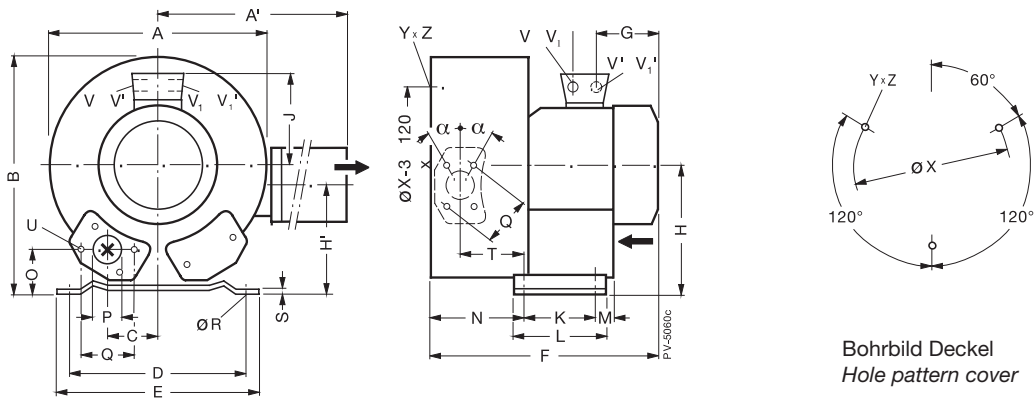


Bohrbild Deckel
Hole pattern cover

| Typ • Type | Phasen | | | | | | | | | | | | | | | | | |
|------------------|--------|------|-----|-----|-----|-----|-----|-----|-----|-----|-----|-----|-----|----|----|-----------------------|-----------------------|----|
| | Phases | A | B | C | D | E | F | G | H | J | K | L | M | N | O | P | Q | ØR |
| | | [mm] | | | | | | | | | | | | | | ["] | | |
| 2BH1 30. - 7A.1. | 1 ~ | 246 | 247 | 90 | 205 | 230 | 256 | 129 | 128 | 111 | 83 | 108 | 75 | 71 | 39 | G 1¼ (15 tief • deep) | 64 | 10 |
| 2BH1 10. - 7A.0. | 1 ~ | 246 | 247 | 90 | 205 | 230 | 256 | 129 | 128 | 111 | 83 | 108 | 75 | 71 | 39 | G 1¼ (15 tief • deep) | 64 | 10 |
| 2BH1 30. - 7A.0. | 3 ~ | 246 | 247 | 90 | 205 | 230 | 219 | 92 | 128 | 101 | 83 | 108 | 75 | 71 | 39 | G 1¼ (15 tief • deep) | 64 | 10 |
| - 7A.1. | | 246 | 247 | 90 | 205 | 230 | 256 | 129 | 128 | 111 | 83 | 108 | 75 | 71 | 39 | G 1¼ (15 tief • deep) | 64 | 10 |
| 2BH1 33. - 7A.0. | 3 ~ | 246 | 247 | 90 | 205 | 230 | 242 | 102 | 128 | 101 | 83 | 108 | 75 | 84 | 39 | G 1¼ (15 tief • deep) | 64 | 10 |
| 2BH1 33. - 7A.1. | 3 ~ | 246 | 247 | 90 | 205 | 230 | 269 | 129 | 128 | 111 | 83 | 108 | 75 | 84 | 39 | G 1¼ (15 tief • deep) | 64 | 10 |
| 2BH1 33. - 7A.2. | 3 ~ | 246 | 247 | 90 | 205 | 230 | 269 | 129 | 128 | 111 | 83 | 108 | 75 | 84 | 39 | G 1¼ (15 tief • deep) | 64 | 10 |
| 2BH1 33. - 7A.1. | 1 ~ | 246 | 247 | 90 | 205 | 230 | 269 | 123 | 128 | 111 | 83 | 108 | 75 | 84 | 39 | G 1¼ (15 tief • deep) | 64 | 10 |
| 2BH1 40. - 7A.1. | 1 ~ | 285 | 302 | 115 | 225 | 255 | 292 | 156 | 154 | 120 | 95 | 130 | 70 | 75 | 46 | G 1½ (15 tief • deep) | 72 | 12 |
| - 7A.2. | | 285 | 302 | 115 | 225 | 255 | 292 | 156 | 154 | 120 | 95 | 130 | 70 | 75 | 46 | G 1½ (15 tief • deep) | 72 | 12 |
| 2BH1 40. - 7A.0. | 3 ~ | 285 | 302 | 115 | 225 | 255 | 269 | 129 | 154 | 120 | 95 | 130 | 70 | 75 | 46 | G 1½ (15 tief • deep) | 72 | 12 |
| - 7A.1. | | 285 | 302 | 115 | 225 | 255 | 292 | 153 | 154 | 120 | 95 | 130 | 70 | 75 | 46 | G 1½ (15 tief • deep) | 72 | 12 |
| - 7A.2. | | 285 | 302 | 115 | 225 | 255 | 292 | 153 | 154 | 120 | 95 | 130 | 70 | 75 | 46 | G 1½ (15 tief • deep) | 72 | 12 |
| 2BH1 43. - 7AA11 | 1 ~ | 285 | 302 | 115 | 225 | 255 | 311 | 156 | 154 | 120 | 95 | 130 | 70 | 75 | 46 | G 1½ (15 tief • deep) | 72 | 12 |
| 2BH1 43. - 7A.0. | 3 ~ | 285 | 302 | 115 | 225 | 255 | 288 | 129 | 154 | 120 | 95 | 130 | 70 | 75 | 46 | G 1½ (15 tief • deep) | 72 | 12 |
| 2BH1 43. - 7A.1. | 3 ~ | 285 | 302 | 115 | 225 | 255 | 311 | 156 | 154 | 120 | 95 | 130 | 70 | 75 | 46 | G 1½ (15 tief • deep) | 72 | 12 |
| 2BH1 43. - 7A.2. | 3 ~ | 285 | 302 | 115 | 225 | 255 | 311 | 156 | 154 | 120 | 95 | 130 | 70 | 75 | 46 | G 1½ (15 tief • deep) | 72 | 12 |
| 2BH1 43. - 7AV25 | 1 ~ | 285 | 302 | 115 | 225 | 255 | 311 | 147 | 154 | 120 | 95 | 130 | 70 | 75 | 46 | G 1½ (15 tief • deep) | 72 | 12 |
| 2BH1 49. - 7AA1. | 1 ~ | 285 | 302 | 115 | 225 | 255 | 292 | 156 | 154 | 120 | 95 | 130 | 70 | 75 | 46 | G 1½ (15 tief • deep) | 72 | 12 |
| - 7AB1. | | 285 | 302 | 115 | 225 | 255 | 292 | 156 | 154 | 120 | 95 | 130 | 70 | 75 | 46 | G 1½ (15 tief • deep) | 72 | 12 |
| - 7A.1. | | 3 ~ | 285 | 302 | 115 | 225 | 255 | 292 | 156 | 154 | 120 | 95 | 130 | 70 | 75 | 46 | G 1½ (15 tief • deep) | 72 |

| Typ • Type | Phasen | | | | | | | | X-Bohrungen | |
|------------------|--------|------|----------|------------|------------|------------|------------|------------|-----------------------|-----------------------|
| | Phases | S | U | V (1 ~) | V' (1 ~) | V1 (3 ~) | V'1 (3 ~) | Y x Z | X Holes | |
| | | [mm] | [" x mm] | | | | | | Ø X | |
| 2BH1 30. - 7A.1. | 1 ~ | 2,5 | M 6 x 17 | M 16 x 1,5 | M 25 x 1,5 | - | - | M 6 x 15 | 0°/120°/240° Ø 140 | |
| 2BH1 10. - 7A.0. | 1 ~ | 2,5 | M 6 x 17 | - | - | - | - | M 6 x 15 | 0°/120°/240° Ø 140 | |
| 2BH1 30. - 7A.0. | 3 ~ | 2,5 | M 6 x 17 | - | - | M 25 x 1,5 | M 16 x 1,5 | M 6 x 15 | 0°/120°/240° Ø 140 | |
| - 7A.1. | | 2,5 | M 6 x 17 | - | - | M 25 x 1,5 | M 16 x 1,5 | M 6 x 15 | 0°/120°/240° Ø 140 | |
| 2BH1 33. - 7A.0. | 3 ~ | 2,5 | M 6 x 17 | - | - | M 25 x 1,5 | M 16 x 1,5 | M 6 x 15 | 0°/120°/240° Ø 140 | |
| 2BH1 33. - 7A.1. | 3 ~ | 2,5 | M 6 x 17 | - | - | M 25 x 1,5 | M 16 x 1,5 | M 6 x 15 | 0°/120°/240° Ø 140 | |
| 2BH1 33. - 7A.2. | 3 ~ | 2,5 | M 6 x 17 | - | - | M 25 x 1,5 | M 16 x 1,5 | M 6 x 15 | 0°/120°/240° Ø 140 | |
| 2BH1 33. - 7A.1. | 3 ~ | 2,5 | M 6 x 17 | - | - | M 25 x 1,5 | M 16 x 1,5 | M 6 x 15 | 0°/120°/240° Ø 140 | |
| 2BH1 40. - 7A.1. | 1 ~ | 3 | M 6 x 19 | M 16 x 1,5 | M 25 x 1,5 | - | - | M 6 x 15 | 0°/120°/240° Ø 174 | |
| - 7A.2. | | 3 | M 6 x 19 | M 16 x 1,5 | M 25 x 1,5 | M 25 x 1,5 | M 16 x 1,5 | M 6 x 15 | 0°/120°/240° Ø 174 | |
| 2BH1 40. - 7A.0. | 3 ~ | 3 | M 6 x 19 | - | - | M 25 x 1,5 | M 16 x 1,5 | M 6 x 15 | 0°/120°/240° Ø 174 | |
| - 7A.1. | | 3 | M 6 x 19 | - | - | M 25 x 1,5 | M 16 x 1,5 | M 6 x 15 | 0°/120°/240° Ø 174 | |
| - 7A.2. | | 3 | M 6 x 19 | - | - | M 25 x 1,5 | M 16 x 1,5 | M 6 x 15 | 0°/120°/240° Ø 174 | |
| 2BH1 43. - 7AA11 | 1 ~ | 3 | M 6 x 19 | - | - | M 25 x 1,5 | M 16 x 1,5 | M 6 x 15 | 0°/120°/240° Ø 174 | |
| 2BH1 43. - 7A.0. | 3 ~ | 3 | M 6 x 19 | - | - | M 25 x 1,5 | M 16 x 1,5 | M 6 x 15 | 0°/120°/240° Ø 174 | |
| 2BH1 43. - 7A.1. | 3 ~ | 3 | M 6 x 19 | - | - | M 25 x 1,5 | M 16 x 1,5 | M 6 x 15 | 0°/120°/240° Ø 174 | |
| 2BH1 43. - 7A.2. | 3 ~ | 3 | M 6 x 19 | - | - | M 25 x 1,5 | M 16 x 1,5 | M 6 x 15 | 0°/120°/240° Ø 174 | |
| 2BH1 43. - 7AV25 | 1 ~ | 3 | M 6 x 19 | - | - | M 25 x 1,5 | M 16 x 1,5 | M 6 x 15 | 0°/120°/240° Ø 174 | |
| 2BH1 49. - 7AA1. | 1 ~ | 3 | M 6 x 19 | M 16 x 1,5 | M 25 x 1,5 | - | - | M 6 x 15 | 0°/120°/240° Ø 174 | |
| - 7AB1. | | 3 | M 6 x 19 | M 16 x 1,5 | M 25 x 1,5 | - | - | M 6 x 15 | 0°/120°/240° Ø 174 | |
| - 7A.1. | | 3 ~ | 3 | M 6 x 19 | - | - | M 25 x 1,5 | M 16 x 1,5 | M 6 x 15 | 0°/120°/240° Ø 174 |

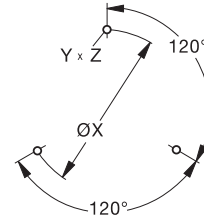
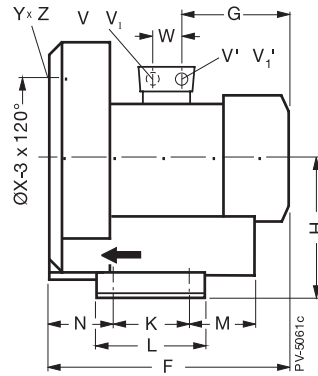
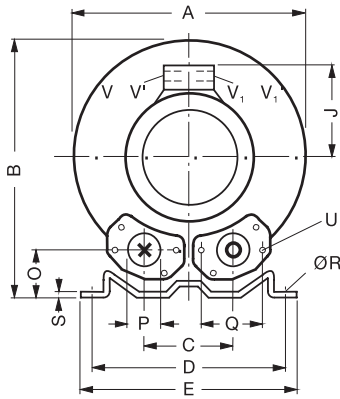
2BH1 31., 2BH1 41.



| Typ • Type | Phasen | [mm] | | | | | | | | | | | | | | | | P | Q |
|------------------|--------|------|-----|-----|----|-----|-----|-----|-----|-----|-----|-----|----|-----|----|-----|----|---------------------|------|
| | Phases | A | A' | B | C | D | E | F | G | H | H' | J | K | L | M | N | O | ["] | [mm] |
| 2BH1 31. - 7H.2. | 3 ~ | 284 | 316 | 270 | 45 | 205 | 230 | 316 | 129 | 128 | 106 | 111 | 83 | 108 | 75 | 130 | 39 | G 1¼ (15 tief•deep) | 64 |
| 2BH1 41. - 7H.3 | 3 ~ | 321 | 321 | 315 | 58 | 225 | 255 | 401 | 185 | 154 | 154 | 128 | 95 | 130 | 70 | 151 | 46 | G 1½ (15 tief•deep) | 72 |
| - 7H.4. | 3 ~ | 321 | 321 | 315 | 58 | 225 | 255 | 401 | 185 | 154 | 154 | 128 | 95 | 130 | 70 | 151 | 46 | G 1½ (15 tief•deep) | 72 |

| Typ • Type | Phasen | [mm] | | | | | | | | | | a | Ø X | Y x Z | X-Bohrungen |
|------------------|--------|------|-----|-----|----------|---------|------------|------------|------------|-----|-----|----------|---------------|---------|-------------|
| | Phases | Ø R | S | T | U | V (1 ~) | V' (1 ~) | V1 (3 ~) | V'1 (3 ~) | | | ["] | [mm] | X Holes | |
| 2BH1 31. - 7H.2. | 3 ~ | 10 | 2,5 | 88 | M 6 x 17 | - | - | M 25 x 1,5 | M 16 x 1,5 | 27° | 140 | M 6 x 15 | 51°/171°/291° | | |
| 2BH1 41. - 7H.3. | 3 ~ | 12 | 3 | 106 | M 6 x 19 | - | M 25 x 1,5 | M 16 x 1,5 | M 16 x 1,5 | 28° | 174 | M 6 x 15 | 51°/171°/291° | | |
| - 7H.4. | 3 ~ | 12 | 3 | 106 | - | - | - | - | M 16 x 1,5 | 28° | 174 | M 6 x 15 | 51°/171°/291° | | |

2BH1 50. – 69.



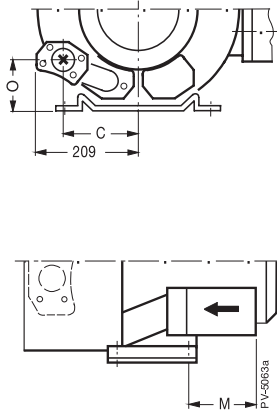
Bohrbild Deckel
Hole pattern cover

| Typ • Type | Phasen | | | | | | | | | | | | | | | | | | |
|------------------------|--------|------|-----|-----|-----|-----|-----|-----|-------|-----|-----|-----|----|-----|----|----|----|----|--|
| | Phases | A | B | C | D | E | F | G | H | J | K | L | M | N | O | P | Q | ØR | |
| | | [mm] | | | | | | | | | | | | | | | | | |
| 2BH1 50. -7A.1. | 1~ | 334 | 337 | 120 | 260 | 295 | 313 | 156 | 175 | 120 | 115 | 155 | 96 | 87 | 48 | 55 | 83 | 14 | |
| -7A.2. | 1~ | 334 | 337 | 120 | 260 | 295 | 345 | 188 | 175 | 128 | 115 | 155 | 96 | 87 | 48 | 55 | 83 | 14 | |
| 2BH1 50. -7A.0. | 3~ | 334 | 337 | 120 | 260 | 295 | 314 | 153 | 175 | 120 | 115 | 155 | 96 | 87 | 48 | 55 | 83 | 14 | |
| -7A.1. | 3~ | 334 | 337 | 120 | 260 | 295 | 314 | 153 | 175 | 120 | 115 | 155 | 96 | 87 | 48 | 55 | 83 | 14 | |
| -7A.2. | 3~ | 334 | 337 | 120 | 260 | 295 | 346 | 185 | 175 | 128 | 115 | 155 | 96 | 87 | 48 | 55 | 83 | 14 | |
| -7A.3. | 3~ | 334 | 337 | 120 | 260 | 295 | 346 | 185 | 175 | 128 | 115 | 155 | 96 | 87 | 48 | 55 | 83 | 14 | |
| 2BH1 530-7AA21 | 1~ | 334 | 337 | 120 | 260 | 295 | 371 | 188 | 174 | 128 | 115 | 155 | 96 | 87 | 48 | 55 | 83 | 14 | |
| 2BH1 530-7A.0. | 3~ | 334 | 337 | 120 | 260 | 295 | 339 | 152 | 174 | 128 | 115 | 155 | 96 | 87 | 48 | 55 | 83 | 14 | |
| 2BH1 530-7A.1. | 3~ | 334 | 337 | 120 | 260 | 295 | 339 | 152 | 174 | 128 | 115 | 155 | 96 | 87 | 48 | 55 | 83 | 14 | |
| 2BH1 530-7A.2. | 3~ | 334 | 337 | 120 | 260 | 295 | 371 | 184 | 174 | 128 | 115 | 155 | 96 | 87 | 48 | 55 | 83 | 14 | |
| 2BH1 530-7A.3. | 3~ | 334 | 337 | 120 | 260 | 295 | 371 | 184 | 174 | 128 | 115 | 155 | 96 | 87 | 48 | 55 | 83 | 14 | |
| 2BH1 530-7AV35 | 1~ | 334 | 337 | 120 | 260 | 295 | 371 | 178 | 174 | 128 | 115 | 155 | 96 | 87 | 48 | 55 | 83 | 14 | |
| 2BH1 59. -7AA2. | 1~ | 334 | 337 | 120 | 260 | 295 | 345 | 188 | 174,5 | 128 | 115 | 155 | 96 | 87 | 48 | 55 | 83 | 15 | |
| -7AB2. | 1~ | 334 | 337 | 120 | 260 | 295 | 345 | 188 | 174,5 | 128 | 115 | 155 | 96 | 87 | 48 | 55 | 83 | 15 | |
| -7AH2. | 3~ | 334 | 337 | 120 | 260 | 295 | 345 | 185 | 174,5 | 128 | 115 | 155 | 96 | 87 | 48 | 55 | 83 | 15 | |
| 2BH1 60. -7A.0. | 3~ | 382 | 384 | 125 | 290 | 325 | 377 | 185 | 198 | 128 | 140 | 180 | 84 | 109 | 54 | 55 | 83 | 15 | |
| -7A.1. | 3~ | 382 | 384 | 125 | 290 | 325 | 377 | 185 | 198 | 128 | 140 | 180 | 84 | 109 | 54 | 55 | 83 | 15 | |
| -7A.2. | 3~ | 382 | 384 | 125 | 290 | 325 | 411 | 190 | 198 | 135 | 140 | 180 | 84 | 109 | 54 | 55 | 83 | 15 | |
| -7A.3. | 3~ | 382 | 384 | 125 | 290 | 325 | 432 | 211 | 198 | 148 | 140 | 180 | 84 | 109 | 54 | 55 | 83 | 15 | |
| 2BH1 630-7A.0. | 3~ | 381 | 420 | 125 | 290 | 325 | 385 | 184 | 197 | 148 | 140 | 180 | 84 | 109 | 54 | 55 | 83 | 15 | |
| 2BH1 630-7A.1. | 3~ | 381 | 420 | 125 | 290 | 325 | 385 | 184 | 197 | 148 | 140 | 180 | 84 | 109 | 54 | 55 | 83 | 15 | |
| 2BH1 630-7A.2. | 3~ | 381 | 420 | 125 | 290 | 325 | 419 | 189 | 197 | 148 | 140 | 180 | 84 | 109 | 54 | 55 | 83 | 15 | |
| 2BH1 630-7A.3. | 3~ | 381 | 420 | 125 | 290 | 325 | 440 | 210 | 197 | 148 | 140 | 180 | 84 | 109 | 54 | 55 | 83 | 15 | |
| 2BH1 69. -7A.2. | 3~ | 381 | 420 | 125 | 290 | 325 | 377 | 85 | 197 | 128 | 140 | 180 | 84 | 109 | 54 | 55 | 83 | 15 | |

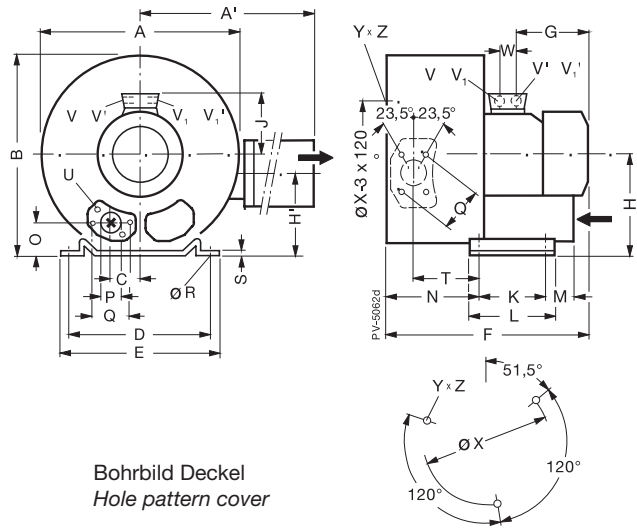
| Typ • Type | Phasen | | | | | | | | X-Bohrungen | | |
|------------------------|--------|------|----------|------------|------------|------------|------------|------|-------------|--------------|------|
| | Phases | S | U | V (1 ~) | V' (1 ~) | V1 (3 ~) | V'1 (3 ~) | ø X | Y x Z | X Holes | W |
| | | [mm] | | [" x mm] | | | | [mm] | [" x mm] | | [mm] |
| 2BH1 50. -7A.1. | 1~ | 4 | M 8 x 17 | M 16 x 1,5 | M 25 x 1,5 | - | - | 200 | M 8 x 20 | 0°/120°/240° | 32 |
| -7A.2. | 1~ | 4 | M 8 x 17 | M 16 x 1,5 | M 25 x 1,5 | - | - | 200 | M 8 x 20 | 0°/120°/240° | 32 |
| 2BH1 50. -7A.0. | 3~ | 4 | M 8 x 17 | - | - | M 25 x 1,5 | M 16 x 1,5 | 200 | M 8 x 20 | 0°/120°/240° | 32 |
| -7A.1. | 3~ | 4 | M 8 x 17 | - | - | M 25 x 1,5 | M 16 x 1,5 | 200 | M 8 x 20 | 0°/120°/240° | 32 |
| -7A.2. | 3~ | 4 | M 8 x 17 | - | - | M 25 x 1,5 | M 16 x 1,5 | 200 | M 8 x 20 | 0°/120°/240° | 32 |
| -7A.3. | 3~ | 4 | M 8 x 17 | - | - | M 25 x 1,5 | M 16 x 1,5 | 200 | M 8 x 20 | 0°/120°/240° | 32 |
| 2BH1 530 -7AA21 | 1~ | 4 | M 8 x 17 | M 16 x 1,5 | M 25 x 1,5 | - | - | 200 | M 8 x 20 | 0°/120°/240° | 32 |
| 2BH1 530 -7A.0. | 3~ | 4 | M 8 x 17 | M 16 x 1,5 | M 25 x 1,5 | - | - | 200 | M 8 x 20 | 0°/120°/240° | 32 |
| 2BH1 530 -7A.1. | 3~ | 4 | M 8 x 17 | M 16 x 1,5 | M 25 x 1,5 | - | - | 200 | M 8 x 20 | 0°/120°/240° | 32 |
| 2BH1 530 -7A.2. | 3~ | 4 | M 8 x 17 | M 16 x 1,5 | M 25 x 1,5 | - | - | 200 | M 8 x 20 | 0°/120°/240° | 32 |
| 2BH1 530 -7A.3. | 3~ | 4 | M 8 x 17 | M 16 x 1,5 | M 25 x 1,5 | - | - | 200 | M 8 x 20 | 0°/120°/240° | 32 |
| 2BH1 530 -7AV35 | 1~ | 4 | M 8 x 17 | M 16 x 1,5 | M 25 x 1,5 | - | - | 200 | M 8 x 20 | 0°/120°/240° | 32 |
| 2BH1 59. -7AA2. | 1~ | 4 | M 8 x 17 | M 16 x 1,5 | M 25 x 1,5 | - | - | 200 | M 8 x 20 | 0°/120°/240° | 32 |
| -7AB2. | 1~ | 4 | M 8 x 17 | M 16 x 1,5 | M 25 x 1,5 | - | - | 200 | M 8 x 20 | 0°/120°/240° | 32 |
| -7AH2. | 3~ | 4 | M 8 x 17 | - | - | M 25 x 1,5 | M 16 x 1,5 | 200 | M 8 x 20 | 0°/120°/240° | 32 |
| 2BH1 60. -7A.0. | 3~ | 4,5 | M 8 x 17 | - | - | M 25 x 1,5 | M 16 x 1,5 | 240 | M 10 x 20 | 0°/120°/240° | 32 |
| -7A.1. | 3~ | 4,5 | M 8 x 17 | - | - | - | - | 240 | M 10 x 20 | 0°/120°/240° | 32 |
| -7A.2. | 3~ | 4,5 | M 8 x 17 | M 32 x 1,5 | M 32 x 1,5 | M 32 x 1,5 | M 32 x 1,5 | 240 | M 10 x 20 | 0°/120°/240° | 42 |
| -7A.3. | 3~ | 4,5 | M 8 x 17 | M 32 x 1,5 | M 32 x 1,5 | M 32 x 1,5 | M 32 x 1,5 | 240 | M 10 x 20 | 0°/120°/240° | 42 |
| 2BH1 630 -7A.0. | 3~ | 4,5 | M 8 x 17 | M 32 x 1,5 | M 32 x 1,5 | M 32 x 1,5 | M 32 x 1,5 | 240 | M 10 x 20 | 0°/120°/240° | 42 |
| 2BH1 630 -7A.1. | 3~ | 4,5 | M 8 x 17 | M 32 x 1,5 | M 32 x 1,5 | M 32 x 1,5 | M 32 x 1,5 | 240 | M 10 x 20 | 0°/120°/240° | 42 |
| 2BH1 630 -7A.2. | 3~ | 4,5 | M 8 x 17 | M 32 x 1,5 | M 32 x 1,5 | M 32 x 1,5 | M 32 x 1,5 | 240 | M 10 x 20 | 0°/120°/240° | 42 |
| 2BH1 630 -7A.3. | 3~ | 4,5 | M 8 x 17 | M 32 x 1,5 | M 32 x 1,5 | M 32 x 1,5 | M 32 x 1,5 | 240 | M 10 x 20 | 0°/120°/240° | 42 |
| 2BH1 69. -7A.2. | 3~ | 4,5 | M 8 x 17 | - | - | M 25 x 1,5 | M 16 x 1,5 | 240 | M 10 x 20 | 0°/120°/240° | 32 |

2BH1 51., 2BH1 61.

2BH1 61. -...4.
-...5.



2BH1 51.
2BH1 61. -...1.
-...2.
-...3.



Bohrbild Deckel
Hole pattern cover

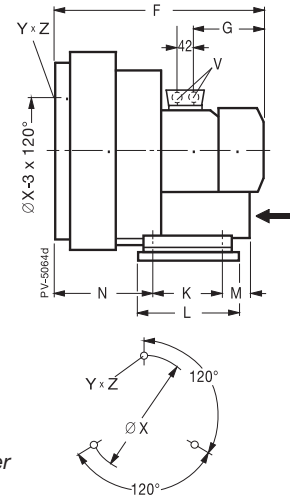
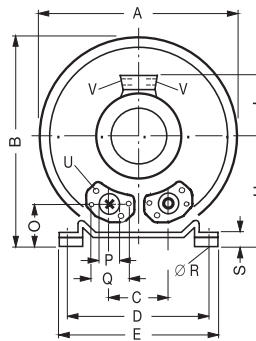
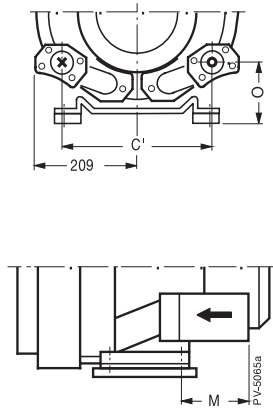
| Typ • Type | A | A' | B | C | D | E | F | G | H | H' | J | K | L | M | N | O | ØP | Q |
|------------------|------|-----|-----|-----|-----|-----|-----|-----|-----|-----|-----|-----|-----|-----|-----|----|----|----|
| | [mm] | | | | | | | | | | | | | | | | | |
| 2BH1 51. - 7H.4. | 372 | 411 | 371 | 60 | 260 | 295 | 465 | 190 | 175 | 144 | 135 | 115 | 155 | 98 | 171 | 48 | 55 | 83 |
| - 7H.5. | 372 | 411 | 371 | 60 | 260 | 295 | 499 | 224 | 175 | 144 | 135 | 115 | 155 | 98 | 171 | 48 | 55 | 83 |
| 2BH1 61. - 7H.1. | 426 | 424 | 420 | 63 | 290 | 325 | 473 | 185 | 198 | 164 | 128 | 140 | 180 | 84 | 205 | 54 | 55 | 83 |
| - 7H.2. | 426 | 424 | 420 | 63 | 290 | 325 | 507 | 190 | 198 | 164 | 135 | 140 | 180 | 84 | 205 | 54 | 55 | 83 |
| - 7H.3. | 426 | 424 | 420 | 63 | 290 | 325 | 528 | 211 | 198 | 164 | 148 | 140 | 180 | 84 | 205 | 54 | 55 | 83 |
| - 7H.4. | 426 | 424 | 420 | 154 | 290 | 325 | 570 | 225 | 198 | 164 | 167 | 140 | 180 | 225 | 205 | 94 | 55 | 83 |
| - 7H.5. | 426 | 424 | 420 | 154 | 290 | 325 | 570 | 225 | 198 | 164 | 167 | 140 | 180 | 225 | 205 | 94 | 55 | 83 |

| Typ • Type | | | | | | | | | | | X-Bohrungen | | W |
|------------------|------|-----|-----|----------|----------------|------------|----|------|----------|-----------|---------------------|------|----|
| | | | | | | | | | | | X Holes | | |
| | ØR | S | T | U | V | V' | V1 | V'1 | ØX | Y x Z | | | |
| | [mm] | | | [" x mm] | | | | [mm] | [" x mm] | | | [mm] | |
| 2BH1 51. - 7H.4. | 14 | 4 | 116 | M 8 x 17 | 4 x M 32 x 1,5 | | | | 200 | M 8 x 20 | 51,5°/171,5°/291,5° | | 42 |
| - 7H.5. | 14 | 4 | 116 | M 8 x 17 | 4 x M 32 x 1,5 | | | | 200 | M 8 x 20 | 51,5°/171,5°/291,5° | | 42 |
| 2BH1 61. - 7H.1. | 15 | 4,5 | 129 | M 8 x 17 | M 25 x 1,5 | M 16 x 1,5 | - | - | 240 | M 10 x 20 | 51,5°/171,5°/291,5° | | 32 |
| - 7H.2. | 15 | 4,5 | 129 | M 8 x 17 | M 25 x 1,5 | M 16 x 1,5 | - | - | 240 | M 10 x 20 | 51,5°/171,5°/291,5° | | 32 |
| - 7H.3. | 15 | 4,5 | 129 | M 8 x 17 | 4 x M 32 x 1,5 | | | | 240 | M 10 x 20 | 51,5°/171,5°/291,5° | | 32 |
| - 7H.4. | 15 | 4,5 | 129 | M 8 x 17 | 4 x M 32 x 1,5 | | | | 240 | M 10 x 20 | 51,5°/171,5°/291,5° | | 32 |
| - 7H.5. | 15 | 4,5 | 129 | M 8 x 17 | 4 x M 32 x 1,5 | | | | 240 | M 10 x 20 | 51,5°/171,5°/291,5° | | 32 |

2BH1 64.

2BH1 64. -...4.
-...5.

2BH1 64.-...3.



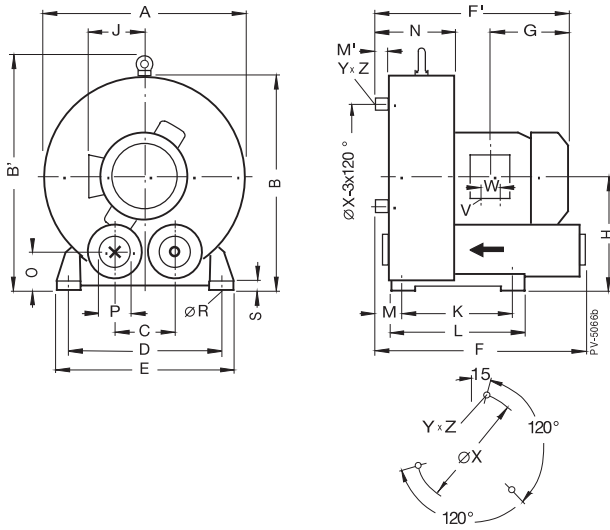
Bohrbild Deckel
Hole pattern cover

| Typ • Type | A | B | C | C' | D | E | F | G | H | J | K | L | M | N |
|------------------|------|-----|-----|-----|-----|-----|-----|-----|-----|-----|-----|-----|-----|-----|
| | [mm] | | | | | | | | | | | | | |
| 2BH1 64. - 7G.3. | 424 | 430 | 125 | - | 290 | 325 | 528 | 211 | 218 | 148 | 140 | 188 | 84 | 205 |
| - 7G.4. | 424 | 430 | - | 309 | 290 | 325 | 569 | 224 | 218 | 167 | 140 | 188 | 225 | 205 |
| - 7G.5. | 424 | 430 | - | 309 | 290 | 325 | 569 | 224 | 218 | 167 | 140 | 188 | 225 | 205 |

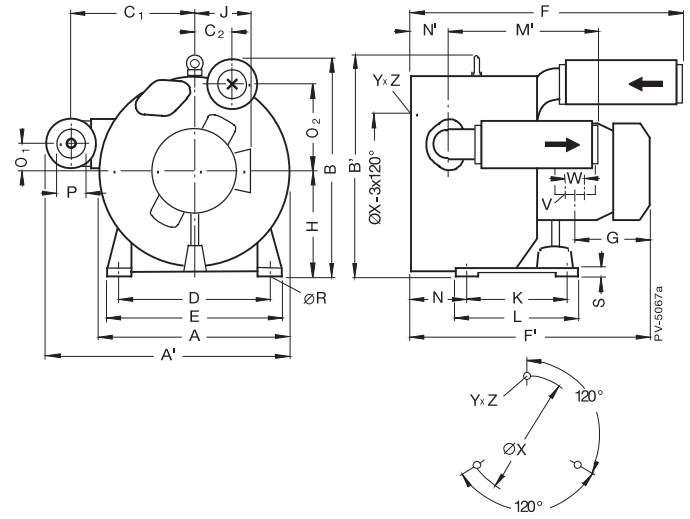
| Typ • Type | O | øP | Q | øR | S | U | V | øX | Y x Z | X-Bohrungen X Holes |
|------------------|------|----|----|----|------|----------|----------------|------|-----------|------------------------|
| | [mm] | | | | | [" x mm] | | [mm] | [" x mm] | |
| 2BH1 64. - 7G.3. | 74 | 55 | 83 | 15 | 24,5 | M 8 x 17 | 4 x M 32 x 1,5 | 240 | M 10 x 20 | 0°/120°/240° |
| - 7G.4. | 114 | 55 | 83 | 15 | 24,5 | M 8 x 17 | 4 x M 32 x 1,5 | 240 | M 10 x 20 | 0°/120°/240° |
| - 7G.5. | 114 | 55 | 83 | 15 | 24,5 | M 8 x 17 | 4 x M 32 x 1,5 | 240 | M 10 x 20 | 0°/120°/240° |

2BH1 80., 2BH1 81.

2BH1 80.



2BH1 81.

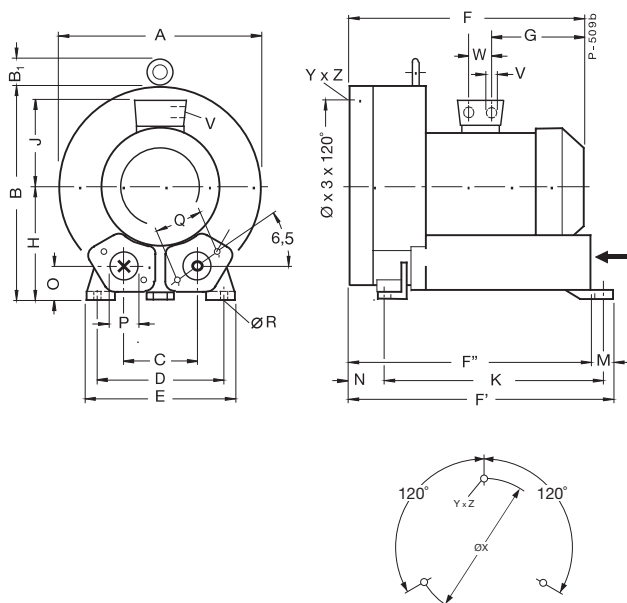


| Typ • Type | A | A' | B | B' | C | C1 | C2 | D | E | F | F' | G | H | J | K | L | M | M' | N |
|-----------------------|------|-----|-----|-----|-----|-----|------|-----|-----|-----|-----|-----|-----|-----|-----|-----|----|-----|-------|
| | [mm] | | | | | | | | | | | | | | | | | | |
| 2BH1 80.-7A.0. | 498 | - | 514 | 567 | 145 | - | - | 365 | 420 | 495 | 470 | 211 | 265 | 148 | 280 | 316 | 35 | 10 | 170 |
| - 7A.1. | 498 | - | 514 | 567 | 145 | - | - | 365 | 420 | 495 | 493 | 224 | 265 | 167 | 280 | 316 | 35 | 10 | 170 |
| - 7A.2. | 498 | - | 514 | 567 | 145 | - | - | 365 | 420 | 495 | 493 | 224 | 265 | 167 | 280 | 316 | 35 | 10 | 170 |
| 2BH1 81.-7H.1. | 501 | 636 | 516 | 567 | - | 318 | 68,5 | 365 | 420 | 601 | 598 | 224 | 265 | 167 | 280 | 316 | - | 402 | 140,5 |
| - 7H.2. | 501 | 636 | 516 | 567 | - | 318 | 68,5 | 365 | 420 | 601 | 598 | 224 | 265 | 167 | 280 | 316 | - | 402 | 140,5 |
| - 7H.3. | 501 | 636 | 516 | 567 | - | 318 | 73 | 365 | 420 | 726 | 687 | 291 | 265 | 167 | 280 | 316 | - | 402 | 140,5 |
| - 7H.4. | 501 | 636 | 516 | 567 | - | 318 | 73 | 365 | 420 | 726 | 687 | 291 | 265 | 167 | 280 | 316 | - | 402 | 140,5 |
| 2BH1830 -7A.0. | 498 | - | 514 | 567 | 145 | - | - | 365 | 420 | 495 | - | 210 | 265 | 167 | 280 | 316 | - | 10 | 170 |
| 2BH1830 -7A.1. | 498 | - | 514 | 567 | 145 | - | - | 365 | 420 | 495 | - | 210 | 265 | 167 | 280 | 316 | - | 10 | 170 |
| 2BH1830 -7A.2. | 498 | - | 514 | 567 | 145 | - | - | 365 | 420 | 495 | - | 210 | 265 | 167 | 280 | 316 | - | 10 | 170 |

| Typ • Type | X-Bohrungen | | | | | | | | | | | | X Holes |
|-----------------------|-------------|----|----|-----|------|------|----|----------------|------|-----|-----------|---------------|---------|
| | N' | O | O1 | O2 | øP | øR | S | V | W | øX | Y x Z | | |
| | [mm] | | | | ["] | [mm] | | ["] x mm | [mm] | | ["] x mm | | |
| 2BH1 80.-7A.0. | - | 81 | - | - | G 2½ | 15 | 22 | 2 x Pg 21 | 42 | 408 | M 12 x 20 | 15°/135°/255° | |
| - 7A.1. | - | 81 | - | - | G 2½ | 15 | 22 | 2 x Pg 21 | 42 | 408 | M 12 x 20 | 15°/135°/255° | |
| - 7A.2. | - | 81 | - | - | G 2½ | 15 | 22 | 2 x Pg 21 | 42 | 408 | M 12 x 20 | 15°/135°/255° | |
| 2BH1 81.-7H.1. | 104 | - | 66 | 186 | G 2½ | 15 | 22 | 4 x M 52 x 1,5 | 42 | 408 | M 12 x 20 | 0°/120°/240° | |
| - 7H.2. | 104 | - | 66 | 186 | G 2½ | 15 | 22 | 4 x M 52 x 1,5 | 42 | 408 | M 12 x 20 | 0°/120°/240° | |
| - 7H.3. | 104 | - | 66 | 234 | G 2½ | 15 | 22 | 4 x M 40 x 1,5 | 54 | 408 | M 12 x 20 | 0°/120°/240° | |
| - 7H.4. | 104 | - | 66 | 234 | G 2½ | 15 | 22 | 4 x M 40 x 1,5 | 54 | 408 | M 12 x 20 | 0°/120°/240° | |
| 2BH1830 -7A.0. | - | 81 | - | - | G 2½ | 15 | 22 | 2 x Pg 21 | 42 | 292 | M 12 x 20 | 0°/120°/240° | |
| 2BH1830 -7A.1. | - | 81 | - | - | G 2½ | 15 | 22 | 2 x Pg 21 | 42 | 292 | M 12 x 20 | 0°/120°/240° | |
| 2BH1830 -7A.2. | - | 81 | - | - | G 2½ | 15 | 22 | 2 x Pg 21 | 42 | 292 | M 12 x 20 | 0°/120°/240° | |

2BH1 90., 2BH1 93., 2BH1 94.

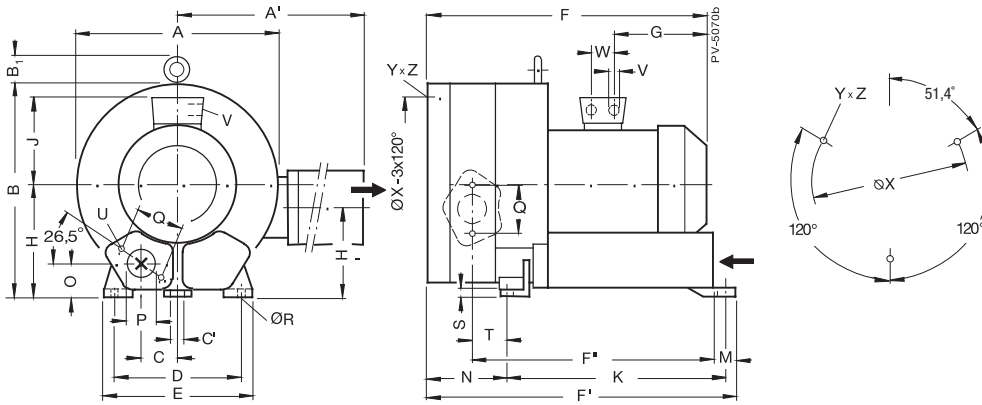
2BH1 90., 2BH1 93., 2BH1 94.



| Typ • Type | A | B | B1 | C | C' | D | E | F | F' | F'' | G | H | J | K | M | N |
|------------------|------|-----|----|-----|----|-----|-----|-----|-----|-----|-----|-----|-----|-----|----|-----|
| | [mm] | | | | | | | | | | | | | | | |
| 2BH1 90. - 7A.0. | 555 | 569 | 62 | 207 | 15 | 360 | 415 | 543 | 726 | 675 | 223 | 300 | 167 | 596 | 52 | 108 |
| - 7A.1. | 555 | 569 | 62 | 207 | 15 | 360 | 415 | 631 | 726 | 675 | 290 | 300 | 197 | 596 | 52 | 108 |
| - 7A.3. | 569 | 569 | 62 | 207 | 15 | 360 | 415 | 631 | 726 | 675 | 290 | 300 | 197 | 596 | 52 | 108 |
| 2BH1 93. - 7A.0. | 555 | 569 | 62 | 207 | 15 | 360 | 415 | 543 | 726 | 675 | 223 | 300 | 167 | 596 | 52 | 108 |
| - 7A.1. | 555 | 569 | 62 | 207 | 15 | 360 | 415 | 631 | 726 | 675 | 290 | 300 | 197 | 596 | 52 | 108 |
| - 7A.2. | 569 | 569 | 62 | 207 | 15 | 360 | 415 | 631 | 726 | 675 | 290 | 300 | 197 | 596 | 52 | 108 |
| - 7A.3. | 569 | 569 | 62 | 207 | 15 | 360 | 415 | 631 | 726 | 675 | 290 | 300 | 197 | 596 | 52 | 108 |
| 2BH1 94. - 7B.2. | 555 | 609 | 62 | 207 | - | 360 | 435 | 765 | 875 | 809 | 290 | 340 | 127 | 596 | 67 | 242 |
| - 7B.3. | 555 | 609 | 62 | 207 | - | 360 | 435 | 765 | 875 | 809 | 290 | 340 | 127 | 596 | 67 | 242 |
| - 7B.4. | 555 | 609 | 62 | 207 | - | 360 | 435 | 805 | 875 | 809 | 330 | 340 | 127 | 596 | 67 | 242 |

| Typ • Type | | | | | | | | | | | | X-Bohrungen | |
|------------------|------|-----|-----|----------|----|-----------|---------------|----|------|-----------|--------------|-------------|--|
| | | | | | | | | | | | | X Holes | |
| | O | ø P | Q | ø R | S | U | V | W | ø X | Y x Z | | | |
| | [mm] | | | | | | | | | | | | |
| | [mm] | | | [" x mm] | | [mm] | [" x mm] | | [mm] | [" x mm] | | | |
| 2BH1 90. - 7A.0. | 91 | 100 | 150 | 15 | 25 | M 12 x 30 | 4 x M32 x 1,5 | 42 | 490 | M 12 x 30 | 0°/120°/240° | | |
| - 7A.1. | 91 | 100 | 150 | 15 | 25 | M 12 x 30 | 4 x M40 x 1,5 | 54 | 490 | M 12 x 30 | 0°/120°/240° | | |
| - 7A.3. | 91 | 100 | 150 | 15 | 25 | M 12 x 30 | 4 x M40 x 1,5 | 54 | 490 | M 12 x 30 | 0°/120°/240° | | |
| 2BH1 93. - 7A.0. | 91 | 100 | 150 | 15 | 25 | M 12 x 30 | 4 x M32 x 1,5 | 42 | 490 | M 12 x 30 | 0°/120°/240° | | |
| - 7A.1. | 91 | 100 | 150 | 15 | 25 | M 12 x 30 | 4 x M40 x 1,5 | 54 | 490 | M 12 x 30 | 0°/120°/240° | | |
| - 7A.2. | 91 | 100 | 150 | 15 | 25 | M 12 x 30 | 4 x M40 x 1,5 | 54 | 490 | M 12 x 30 | 0°/120°/240° | | |
| - 7A.3. | 91 | 100 | 150 | 15 | 25 | M 12 x 30 | 4 x M40 x 1,5 | 54 | 490 | M 12 x 30 | 0°/120°/240° | | |
| 2BH1 94. - 7B.2. | 131 | 100 | 150 | M12x12 | - | M 12 x 30 | 4 x M40 x 1,5 | 54 | 490 | M 12 x 30 | - | | |
| - 7B.3. | 131 | 100 | 150 | M12x12 | - | M 12 x 30 | 4 x M40 x 1,5 | 54 | 490 | M 12 x 30 | - | | |
| - 7B.4. | 131 | 100 | 150 | M12x12 | - | M 12 x 30 | 4 x M40 x 1,5 | 54 | 490 | M 12 x 30 | - | | |

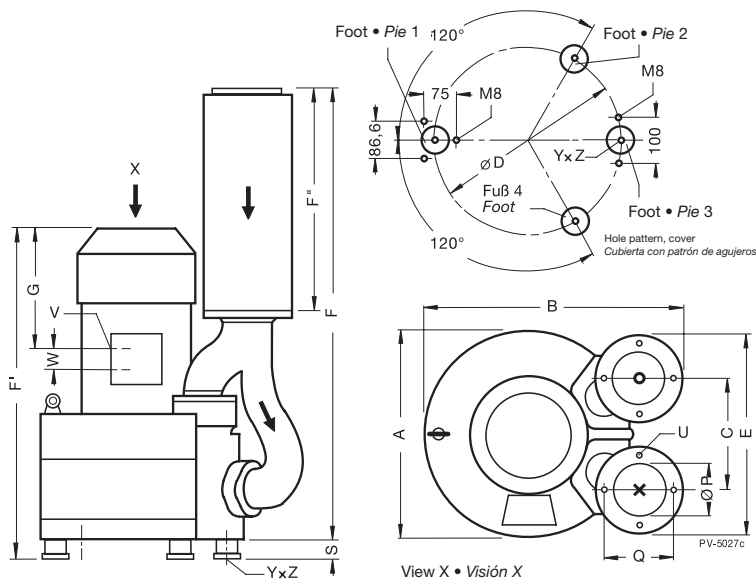
2BH1 91.



| Typ • Type | A | A' | B | B1 | C | C' | D | E | F | F' | F'' | G | H | H' | J | K | M |
|------------------|------|-----|-----|----|-----|----|-----|-----|-----|-----|-----|-----|-----|-----|-----|-----|----|
| | [mm] | | | | | | | | | | | | | | | | |
| 2BH1 91. - 7H.1. | 555 | 798 | 569 | 62 | 104 | 15 | 360 | 415 | 765 | 860 | 662 | 290 | 300 | 245 | 197 | 596 | 52 |
| - 7H.2. | 555 | 798 | 569 | 62 | 104 | 15 | 360 | 415 | 765 | 860 | 662 | 290 | 300 | 245 | 197 | 596 | 52 |
| - 7H.3. | 555 | 798 | 569 | 62 | 104 | 15 | 360 | 415 | 765 | 860 | 662 | 290 | 300 | 245 | 197 | 596 | 52 |
| - 7H.4. | 555 | 798 | 569 | 62 | 104 | 15 | 360 | 415 | 765 | 805 | 662 | 330 | 300 | 245 | 197 | 596 | 52 |

| Typ • Type | N | O | øP | Q | øR | S | T | U | V | W | øX | Y x Z | X-Bohrungen X Holes |
|------------------|----------|----|-----|-----|----|----|----|-----------|---------------|----|-----|-----------|------------------------|
| | [mm] | | | | | | | | | | | | |
| | [" x mm] | | | | | | | | | | | | |
| 2BH1 91. - 7H.1. | 242 | 91 | 100 | 150 | 15 | 25 | 95 | M 12 x 30 | 4 x M40 x 1,5 | 54 | 490 | M 12 x 30 | 51,4°/171,4°/291,4° |
| - 7H.2. | 242 | 91 | 100 | 150 | 15 | 25 | 95 | M 12 x 30 | 4 x M40 x 1,5 | 54 | 490 | M 12 x 30 | 51,4°/171,4°/291,4° |
| - 7H.3. | 242 | 91 | 100 | 150 | 15 | 25 | 95 | M 12 x 30 | 4 x M40 x 1,5 | 54 | 490 | M 12 x 30 | 51,4°/171,4°/291,4° |
| - 7H.4. | 242 | 91 | 100 | 150 | 15 | 25 | 95 | M 12 x 30 | 4 x M40 x 1,5 | 54 | 490 | M 12 x 30 | 51,4°/171,4°/291,4° |

2BH1 943. [mm]

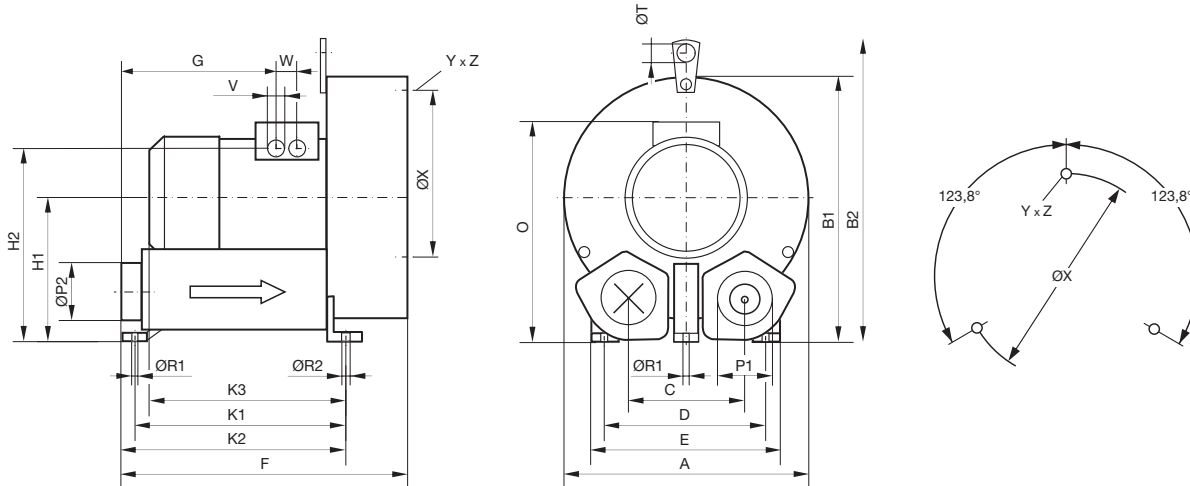


2BH1 943
(nur Deckelaufstellung möglich)
Maße für Befestigungselemente 2BX2 124 siehe Seite 133 (im Lieferumfang der Pumpe/des Kompressors nicht enthalten).

2BH1 943
(only cover mounting possible)
Dimensions for fixing elements 2BX2 124 see page 133 (not included in the scope of delivery of the pump/compressor)

| Typ • Type | A | B | C | D | E | F | F' | F'' | G | P | P' | øP | S | U | V | W | Y x Z |
|------------------|----------|-----|-----|-----|-----|------|-----|-----|-----|-----|-----|-----|----|-----------|----------------|----|-------------|
| | [mm] | | | | | | | | | | | | | | | | |
| | [" x mm] | | | | | | | | | | | | | | | | |
| 2BH1 943 - 7G.2. | 560 | 715 | 307 | 490 | 560 | 1201 | 765 | 600 | 345 | 252 | 130 | 210 | 40 | M 16 x 30 | 2 x M 40 x 1,5 | 54 | M 12 x 10,5 |
| - 7G.3. | 560 | 715 | 307 | 490 | 560 | 1201 | 765 | 600 | 345 | 252 | 130 | 210 | 40 | M 16 x 30 | 2 x M 40 x 1,5 | 54 | M 12 x 10,5 |
| - 7G.4. | 560 | 715 | 307 | 490 | 560 | 1201 | 845 | 600 | 385 | 252 | 130 | 210 | 40 | M 16 x 30 | 2 x M 40 x 1,5 | 54 | M 12 x 10,5 |

2BH9 230.



| Typ • Type | A | B1 | B2 | B3 | C | D | E | F | G | H1 | H2 | K1 | K2 | K3 |
|---------------------|------|-----|-----|-----|-----|-----|-----|-----|-----|-----|-----|-----|-----|-----|
| | [mm] | | | | | | | | | | | | | |
| 2BH9 2300-1AAPQ.-AA | 600 | 693 | 741 | 146 | 285 | 400 | 460 | 750 | 330 | 393 | 520 | 565 | 609 | 534 |
| 2BH9 2300-1AAPR.-AA | 600 | 693 | 741 | 146 | 285 | 400 | 460 | 750 | 330 | 393 | 520 | 565 | 609 | 534 |

| Typ • Type | O | P1 | ø P2 | ø R1 | ø R2 | ø T | V | W | ø X | YxZ |
|---------------------|------|----------|------|----------|------|------|---------------|------|------|-------------|
| | [mm] | [" x mm] | [mm] | [" x mm] | [mm] | [mm] | [" x mm] | [mm] | [mm] | [" x mm] |
| 2BH9 2300-1AAQR.-AA | 590 | G5 x 49 | 150 | M12 | M12 | 27 | 4 x M40 x 1,5 | 54 | 556 | 3x M12 x 21 |
| 2BH9 2300-1AAPR.-AA | 590 | G5 x 49 | 150 | M12 | M12 | 27 | 4 x M40 x 1,5 | 54 | 556 | 3x M12 x 21 |